

SYMONITE PANELS LTD  
PO BOX 101 760  
NORTH SHORE 0745  
TEL: 09 443 3896  
FAX: 09 444 2142  
72 ELLICE ROAD  
GLENFIELD

[www.symonite.co.nz](http://www.symonite.co.nz)

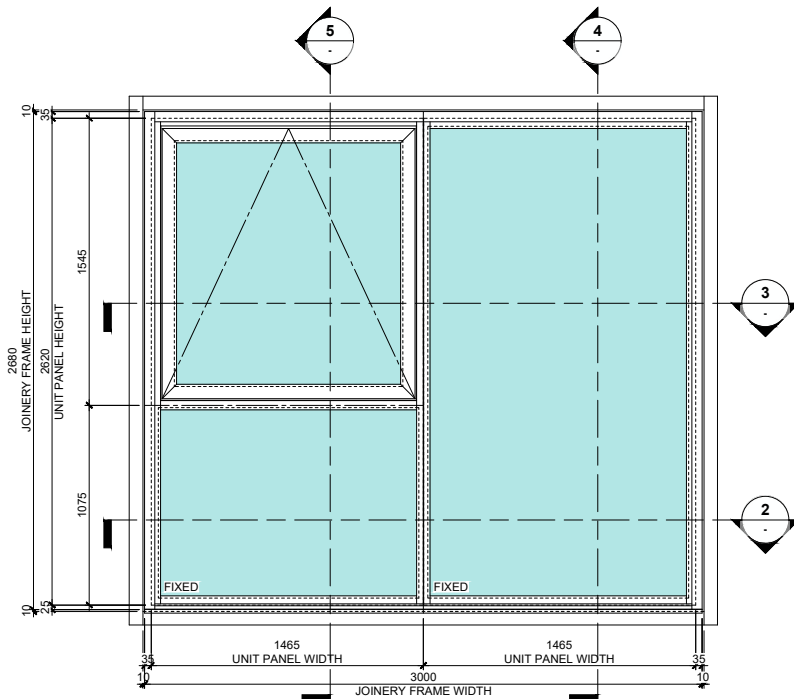
## WINDOW WALL SYSTEM SPL150

Copyright © of this drawing shall remain the property of Symonite Panels Ltd. No part of this document may be reproduced, edited or transmitted by any means without prior permission in writing from Symonite Panels Ltd. Technical specification subject to change without prior notice  
Version: JAN2026 [v1.0]

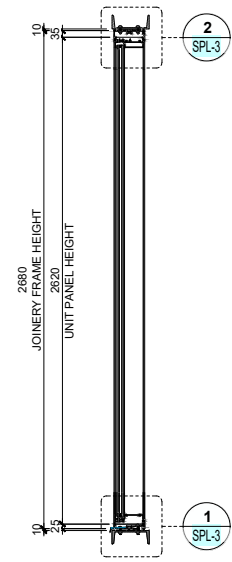
Drawing Number

**SPL-1**

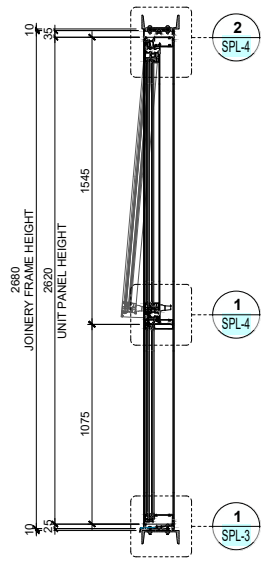
**SYMONITE**



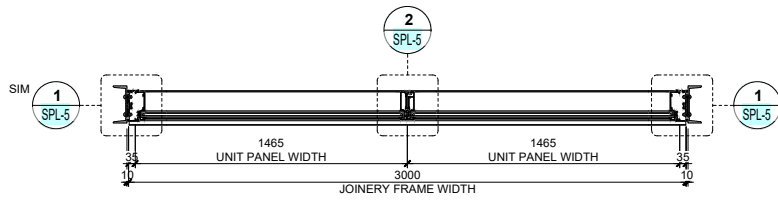
1 ELEVATION VIEW  
- PROPOSED DETAIL 1:30



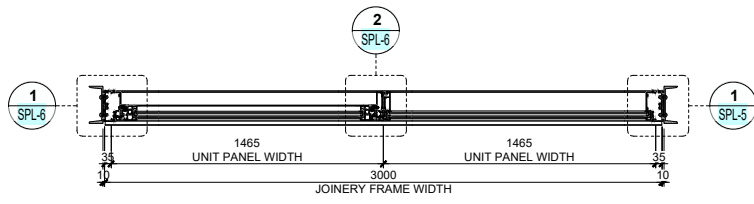
4 PARTIAL SECTION  
- PROPOSED DETAIL 1:30



5 PARTIAL SECTION  
- PROPOSED DETAIL 1:30



2 PARTIAL PLAN  
- PROPOSED DETAIL 1:30



3 PARTIAL PLAN  
- PROPOSED DETAIL 1:30

GLASS / IN-FILL TYPES	LEGEND
Vision Glass	

**SYMONITE**  
 SYMONITE PANELS LTD  
 PO BOX 101 760  
 NORTH SHORE 0745  
 TEL: 09 443 3896  
 FAX: 09 444 2142  
 72 ELLICE ROAD  
 GLENFIELD  
 www.symonite.co.nz

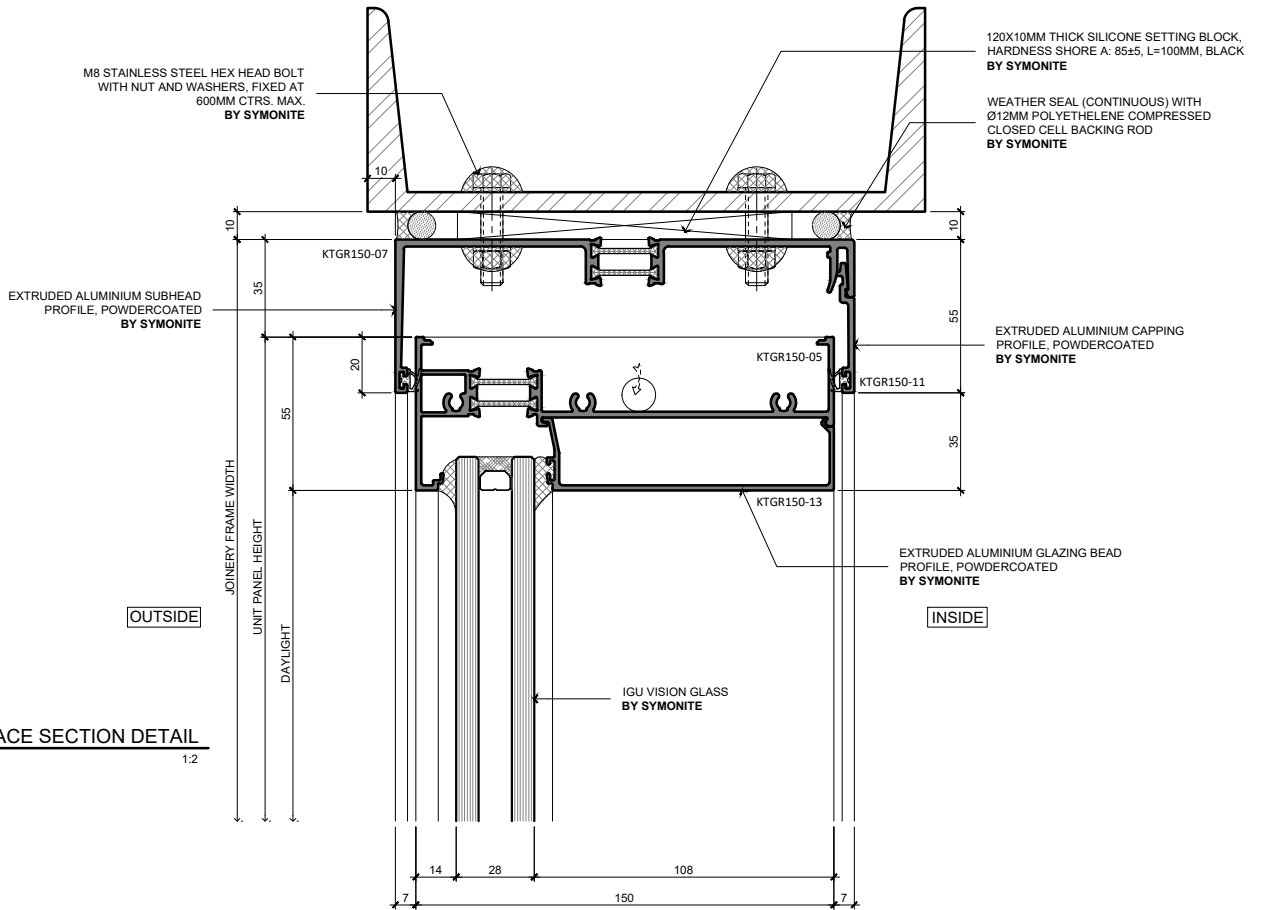
# WINDOW WALL SYSTEM SPL150

Copyright © of this drawing shall remain the property of Symonite Panels Ltd. No part of this document may be reproduced, edited or transmitted by any means without prior permission in writing from Symonite Panels Ltd. Technical specification subject to change without prior notice. Version: JAN2026 [v1.0]

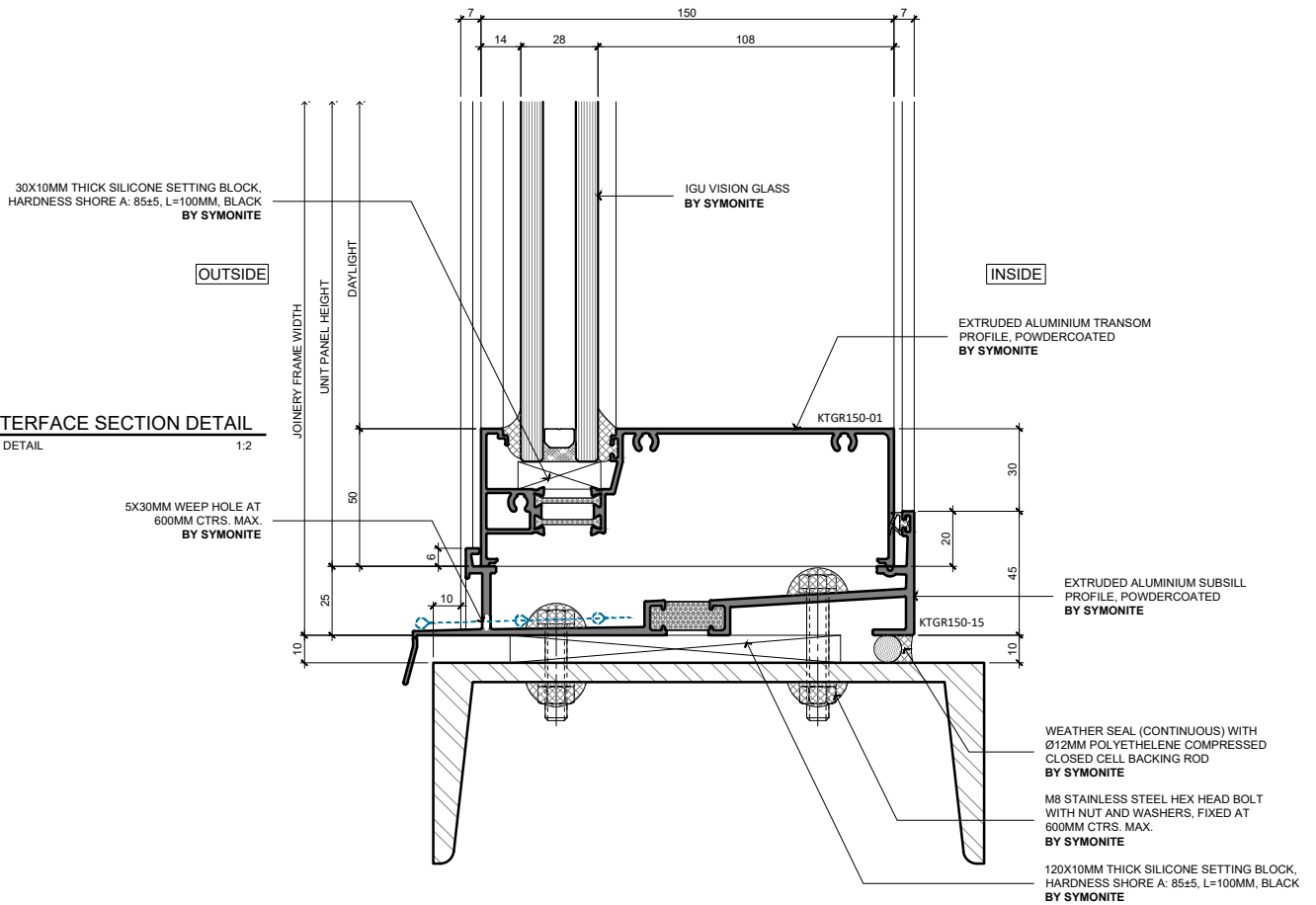
Drawing Number

**SPL-2**

**2 HEAD INTERFACE SECTION DETAIL**  
 SPL-2 PROPOSED DETAIL 1:2



**1 SILL INTERFACE SECTION DETAIL**  
 SPL-2 PROPOSED DETAIL 1:2



SYMONITE PANELS LTD  
 PO BOX 101 760  
 NORTH SHORE 0745  
 TEL: 09 443 3896  
 FAX: 09 444 2142  
 72 ELLICE ROAD  
 GLENFIELD

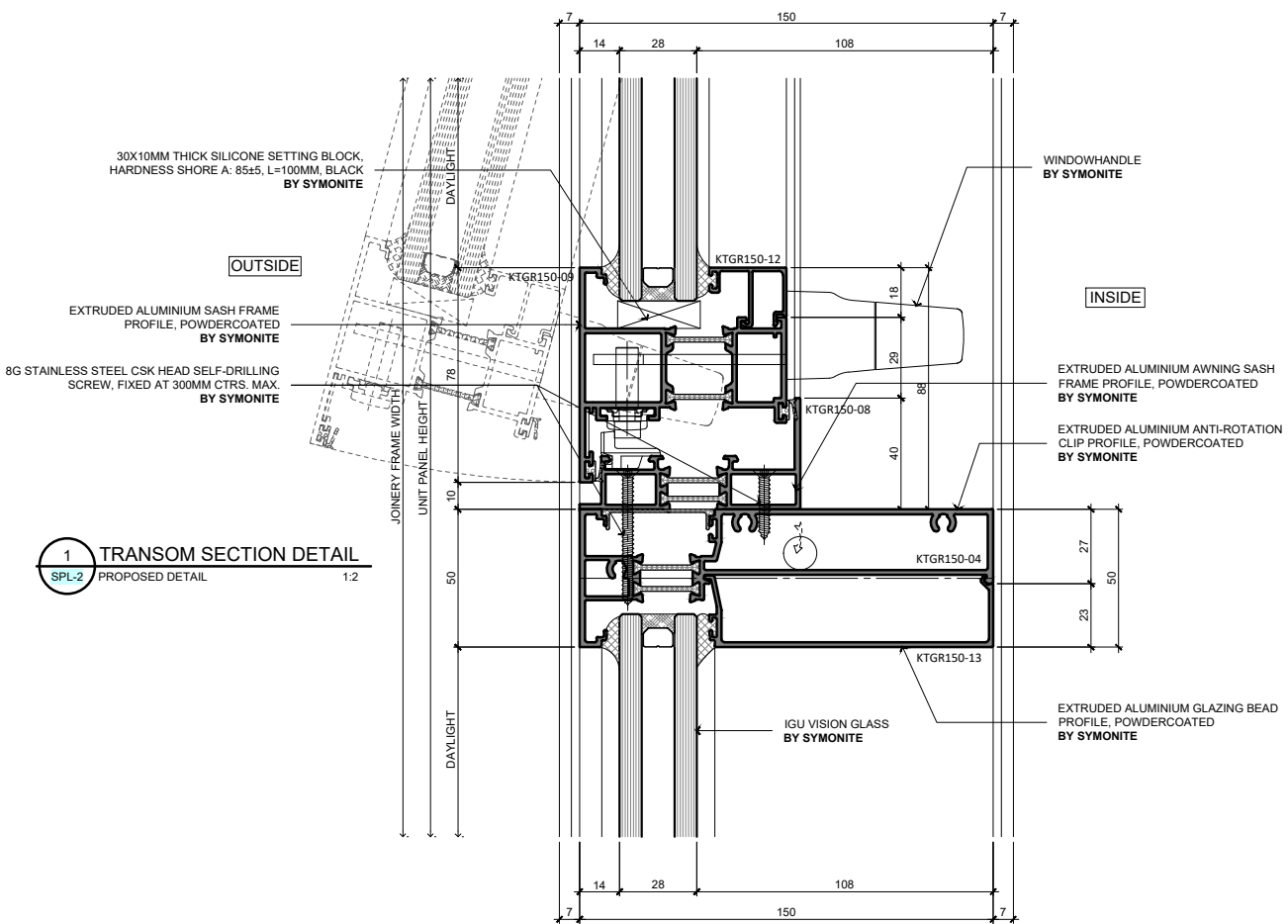
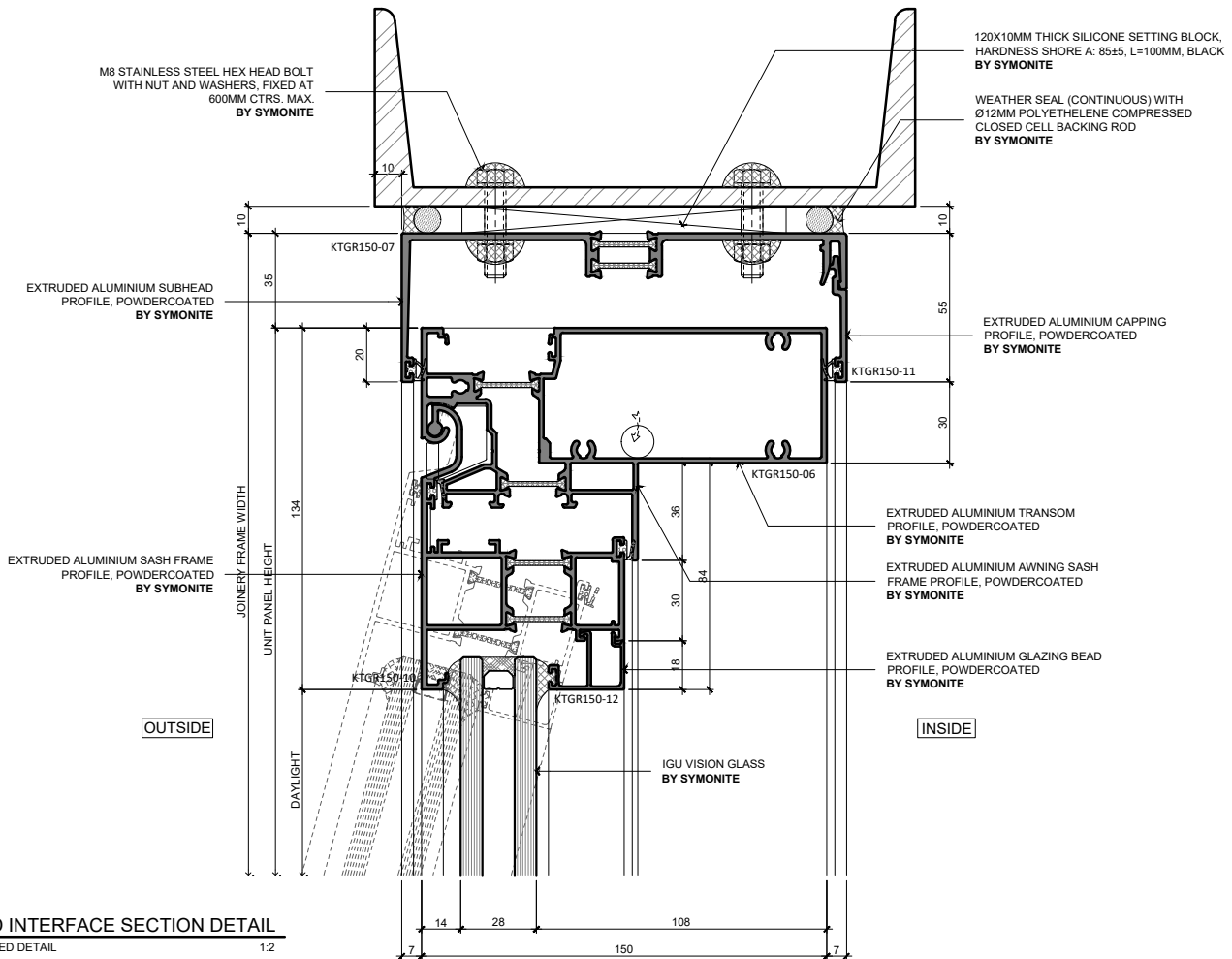
www.symonite.co.nz

# WINDOW WALL SYSTEM SPL150

Copyright © of this drawing shall remain the property of Symonite Panels Ltd. No part of this document may be reproduced, edited or transmitted by any means without prior permission in writing from Symonite Panels Ltd. Technical specification subject to change without prior notice  
 Version: JAN2026 [v1.0]

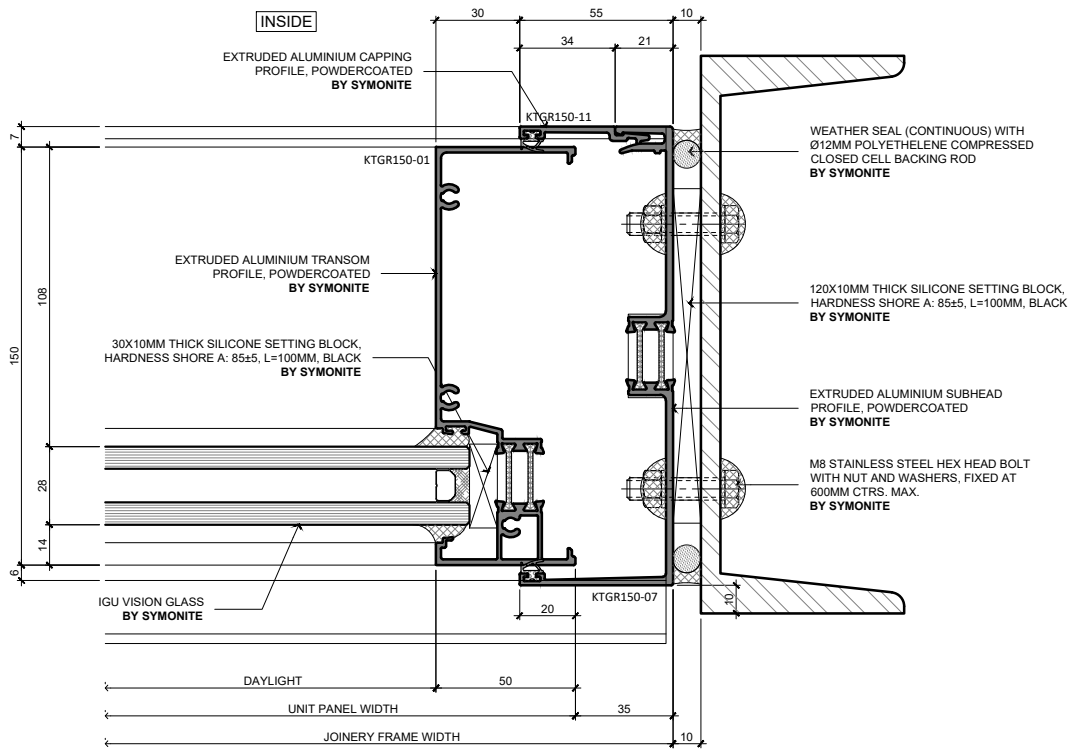
Drawing Number

**SPL-3**



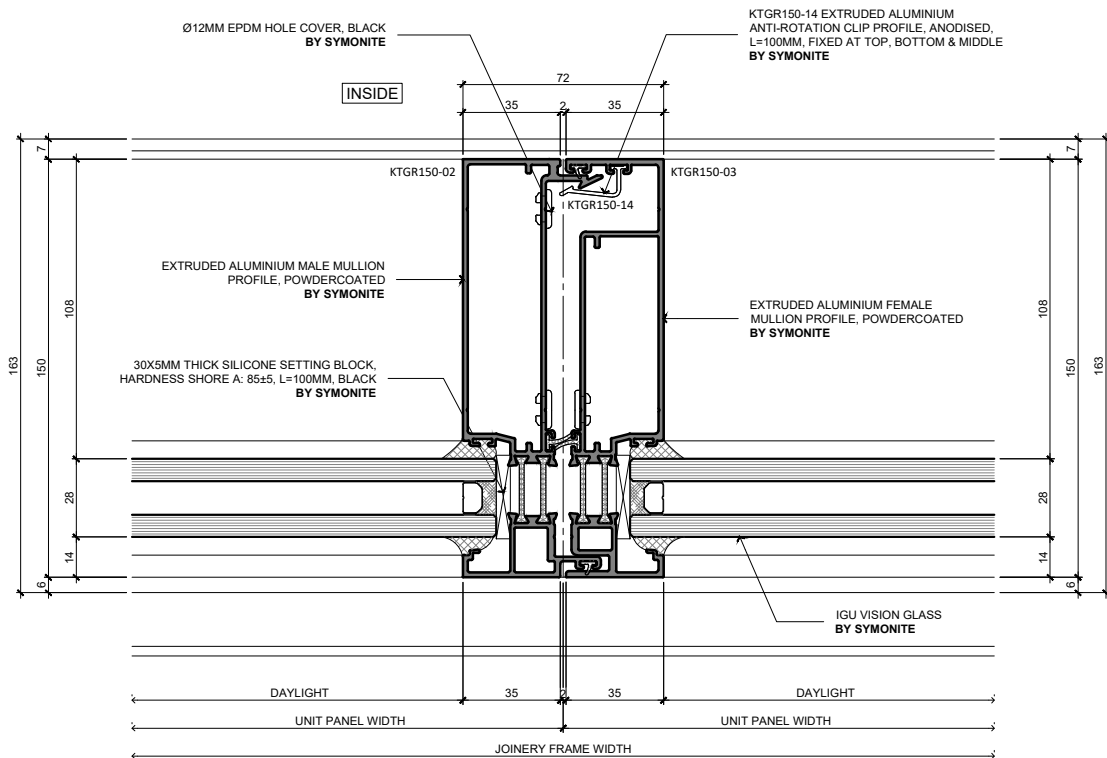
# WINDOW WALL SYSTEM SPL150

C:\Users\RodrigoVelasquez\Documents\My Projects\Window Wall System SPL150\20260127\_Window Wall System SPL150D.dwg



**OUTSIDE**

**1 JAMB INTERFACE PLAN DETAIL**  
SPL-2 PROPOSED DETAIL 1:2



**OUTSIDE**

**2 MULLION PLAN DETAIL**  
SPL-2 PROPOSED DETAIL 1:2

SYMONITE PANELS LTD  
PO BOX 101 760  
NORTH SHORE 0745  
TEL: 09 443 3896  
FAX: 09 444 2142  
72 ELLICE ROAD  
GLENFIELD

www.symonite.co.nz

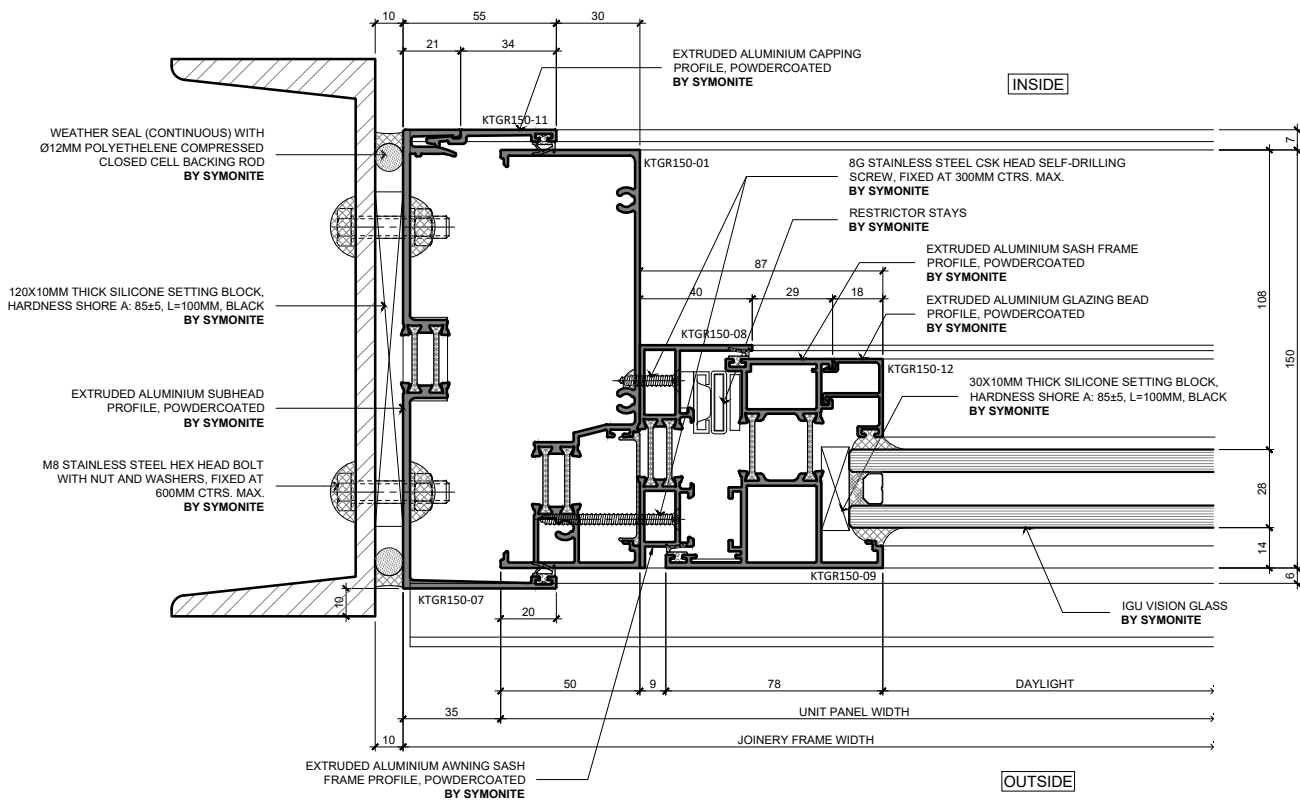
# WINDOW WALL SYSTEM SPL150

Copyright © of this drawing shall remain the property of Symonite Panels Ltd. No part of this document may be reproduced, edited or transmitted by any means without prior permission in writing from Symonite Panels Ltd. Technical specification subject to change without prior notice  
Version: JAN2026 [v1.0]

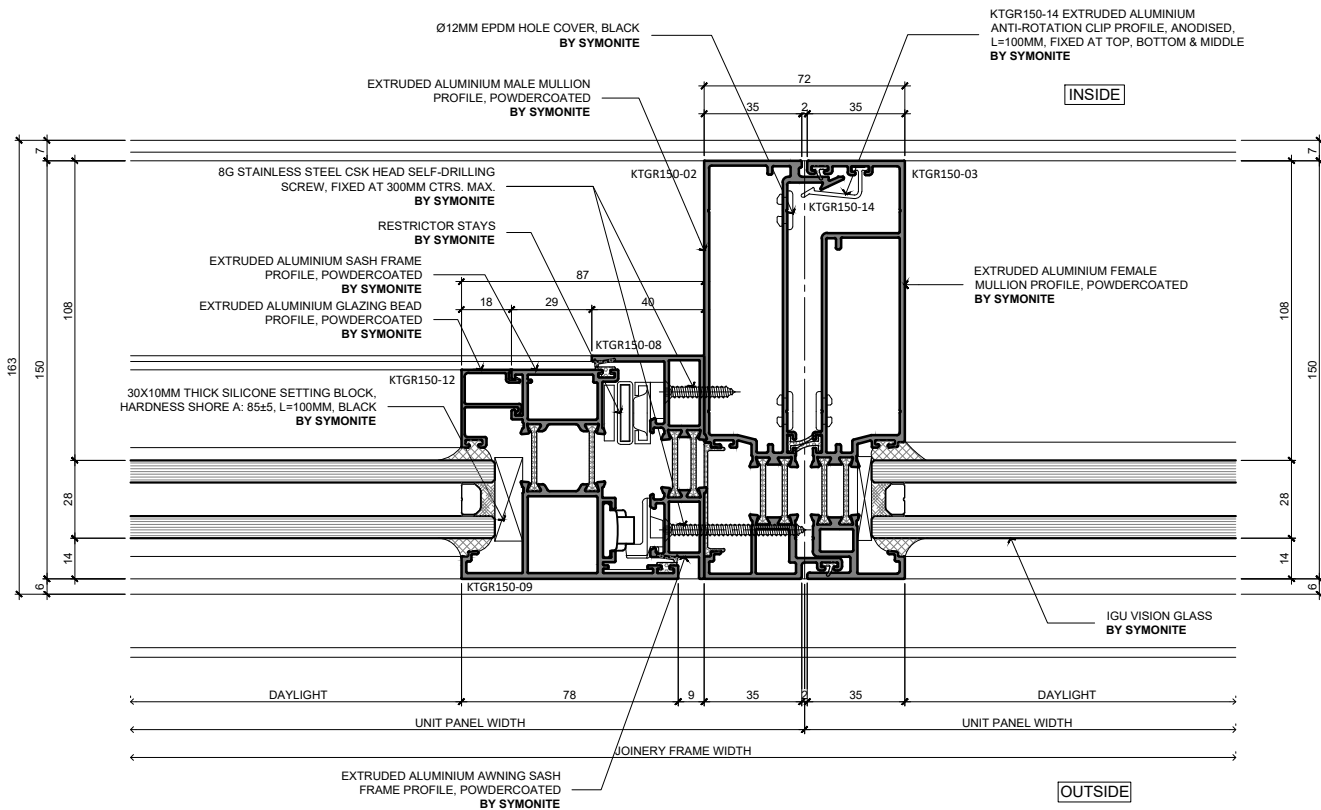
Drawing Number

**SPL-5**

**SYMONITE**



**1 JAMB INTERFACE PLAN DETAIL**  
 SPL-2 PROPOSED DETAIL 1:2



**2 MULLION PLAN DETAIL**  
 SPL-2 PROPOSED DETAIL 1:2

SYMONITE PANELS LTD  
 PO BOX 101 760  
 NORTH SHORE 0745  
 TEL: 09 443 3896  
 FAX: 09 444 2142  
 72 ELLICE ROAD  
 GLENFIELD  
 www.symonite.co.nz

# WINDOW WALL SYSTEM SPL150

Copyright © of this drawing shall remain the property of Symonite Panels Ltd. No part of this document may be reproduced, edited or transmitted by any means without prior permission in writing from Symonite Panels Ltd. Technical specification subject to change without prior notice  
 Version: JAN2026 [v1.0]

Drawing Number

**SPL-6**

