

#### NOTE

TIMBER FRAMING BY OTHERS TO BE AT 600  
CTRS MAX FOR BOTH STUDS & NOGS. MAY BE  
REQUIRED AT CLOSER CENTERS SUBJECT TO  
ENGINEERING REQUIREMENTS

## VERTICAL JOINT ON RAB

Detail Number

\_\_\_\_\_

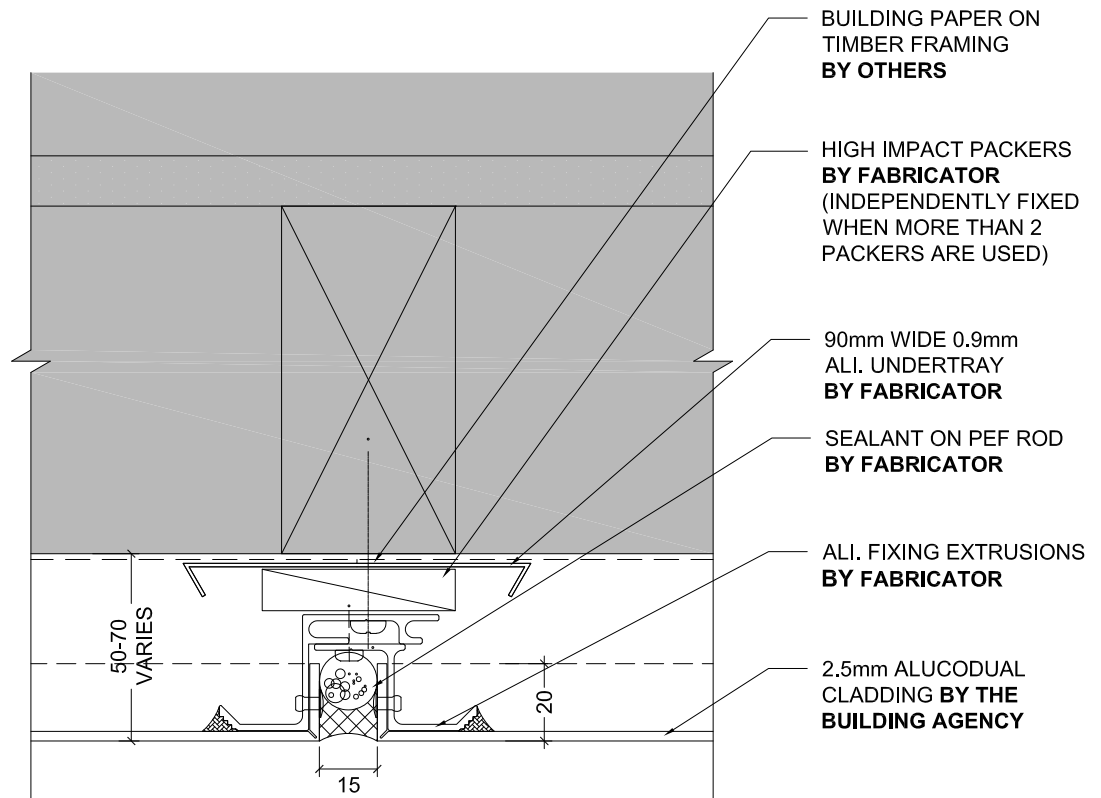
Version

\_\_\_\_\_

[v1.0]



MATERIALS • SYSTEMS • SOLUTIONS



**NOTE**

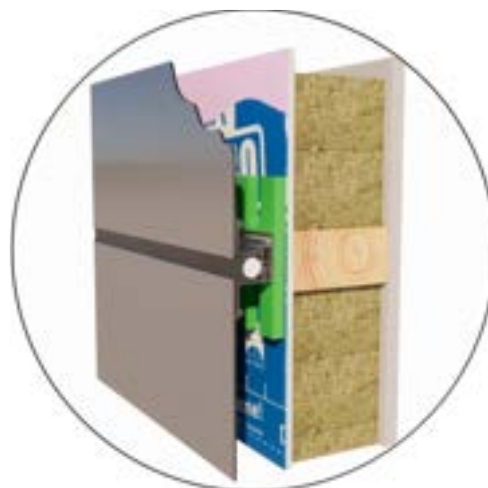
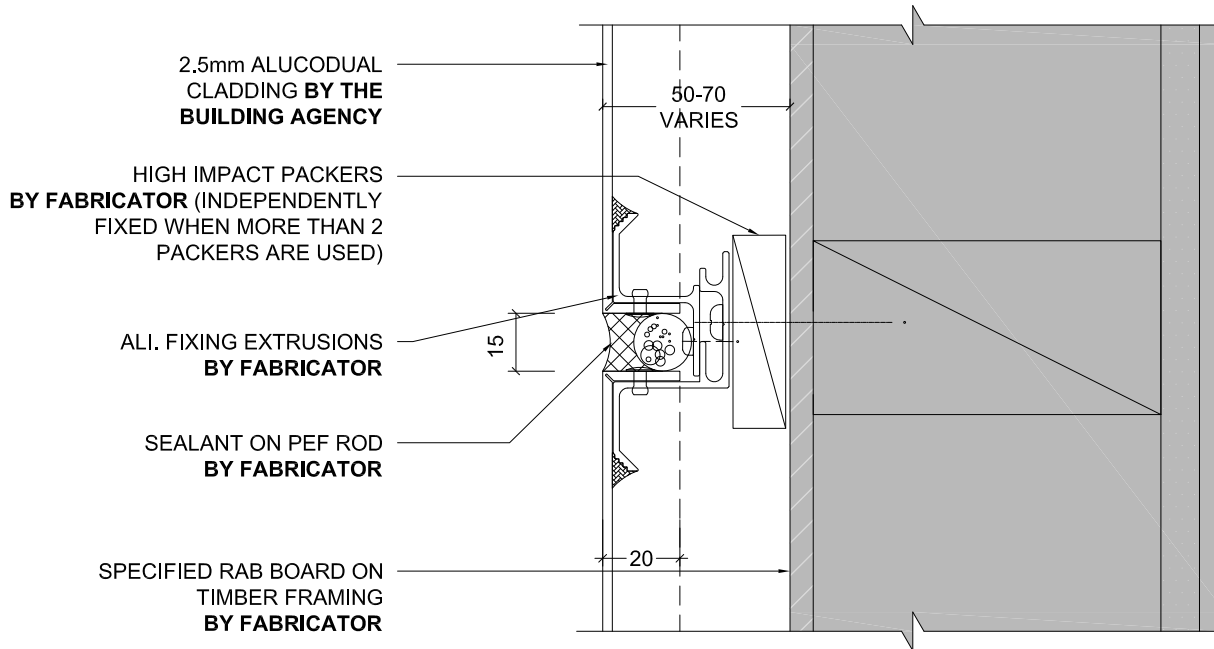
TIMBER FRAMING BY OTHERS TO BE AT 600  
CTRS MAX FOR BOTH STUDS & NOGS. MAY BE  
REQUIRED AT CLOSER CENTERS SUBJECT TO  
ENGINEERING REQUIREMENTS

## VERTICAL JOINT ON BUILDING PAPER

Detail Number \_\_\_\_\_  
Version \_\_\_\_\_  
[v1.0]



MATERIALS • SYSTEMS • SOLUTIONS



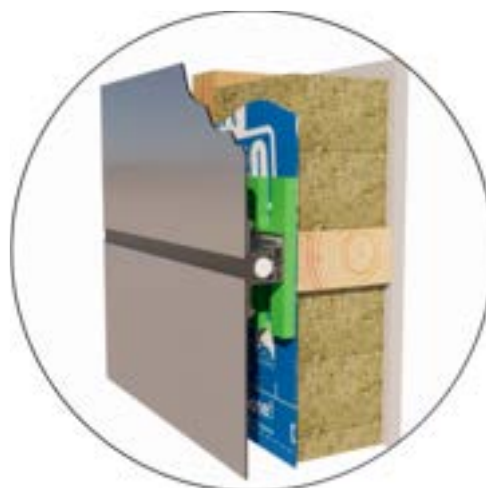
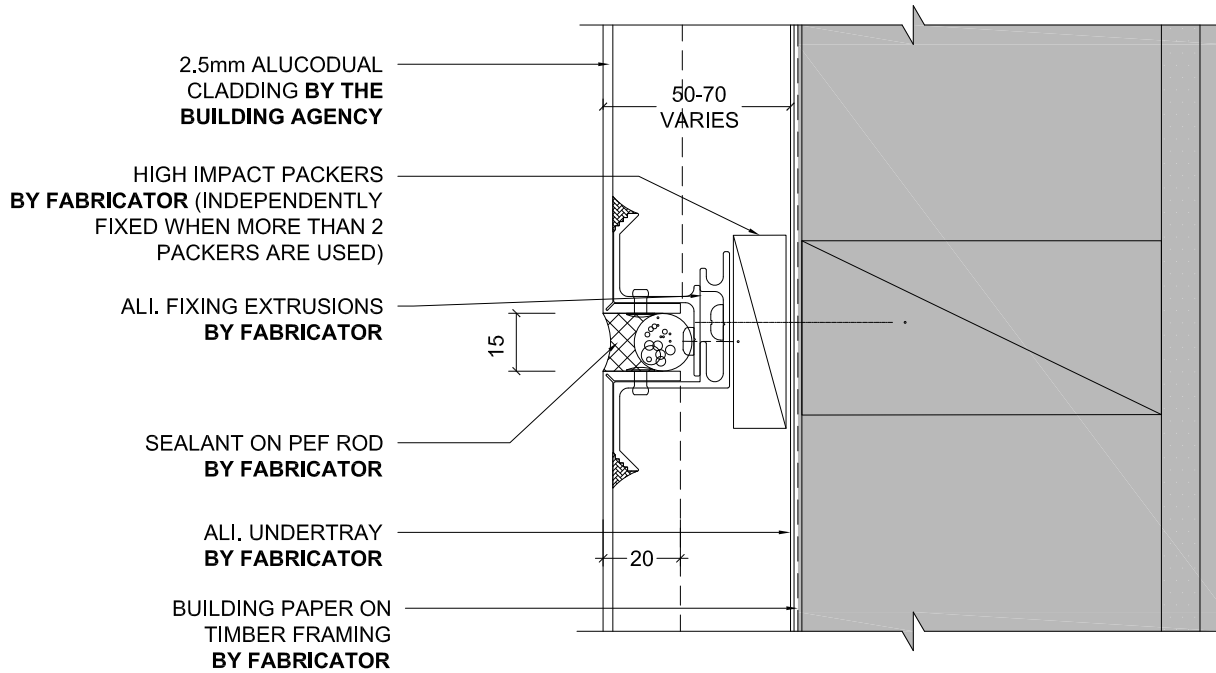
**NOTE**

TIMBER FRAMING BY OTHERS TO BE AT 600 CTRS MAX FOR BOTH STUDS & NOGS. MAY BE REQUIRED AT CLOSER CENTERS SUBJECT TO ENGINEERING REQUIREMENTS

## HORIZONTAL JOINT ON RAB

Detail Number \_\_\_\_\_  
Version \_\_\_\_\_  
[v1.0]





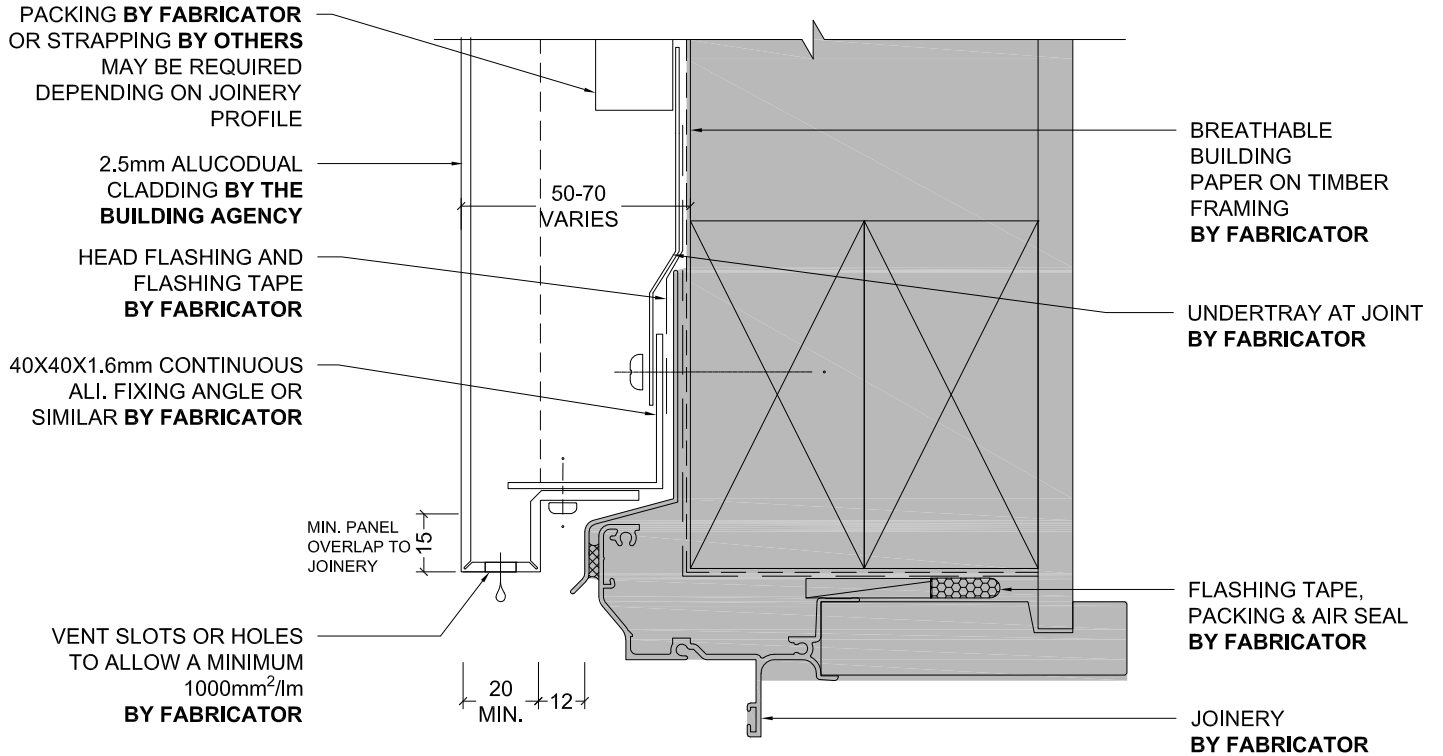
**NOTE**

TIMBER FRAMING BY OTHERS TO BE AT 600 CTRS MAX FOR BOTH STUDS & NOGS. MAY BE REQUIRED AT CLOSER CENTERS SUBJECT TO ENGINEERING REQUIREMENTS

## HORIZONTAL JOINT ON BUILDING PAPER

Detail Number \_\_\_\_\_  
Version \_\_\_\_\_  
2.1  
[v1.0]





## WINDOW HEAD RESIDENTIAL JOINERY

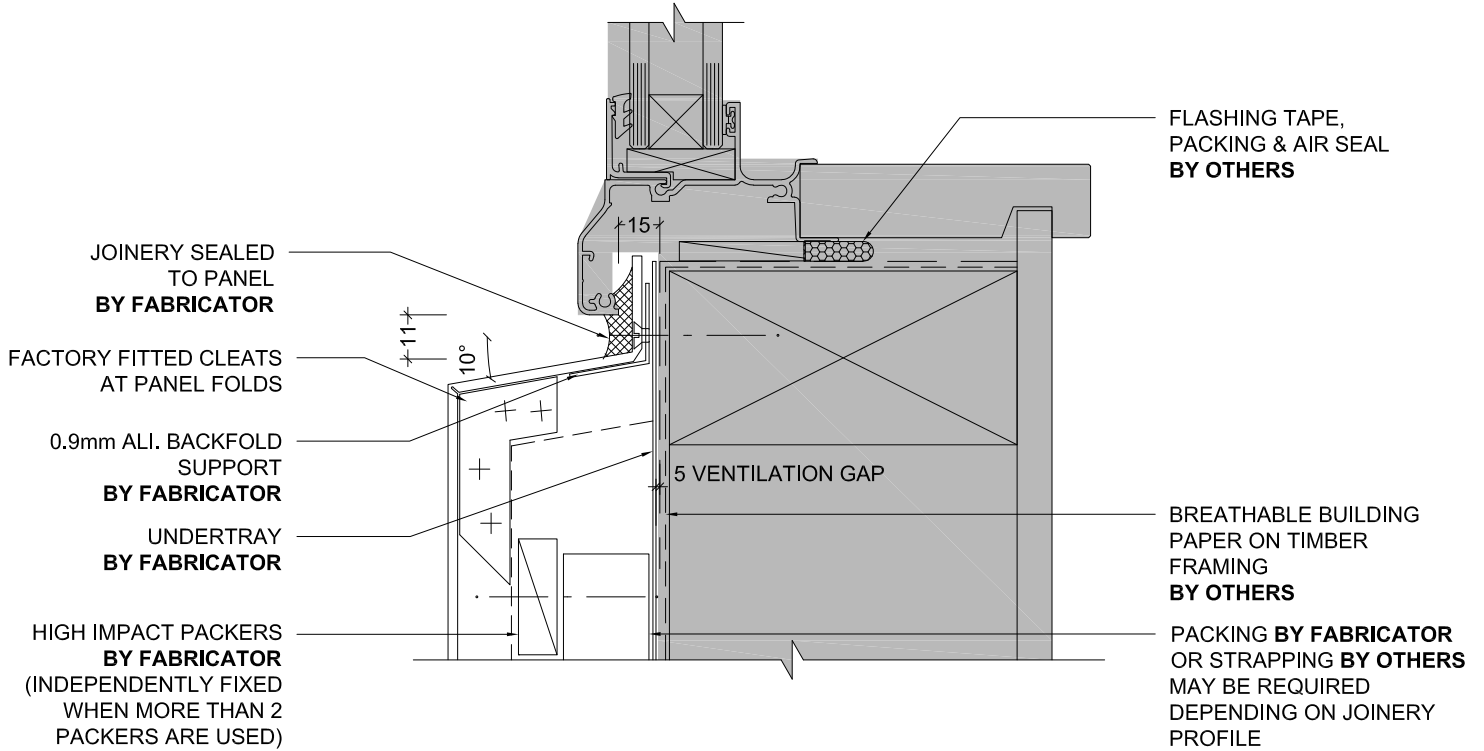
Detail Number \_\_\_\_\_  
Version \_\_\_\_\_

3.1.0

[v1.0]



MATERIALS • SYSTEMS • SOLUTIONS



**NOTE**

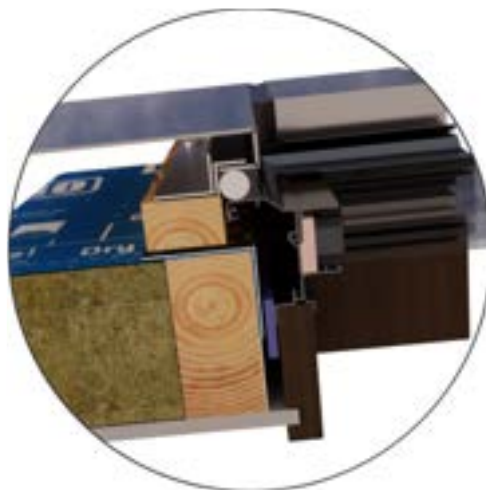
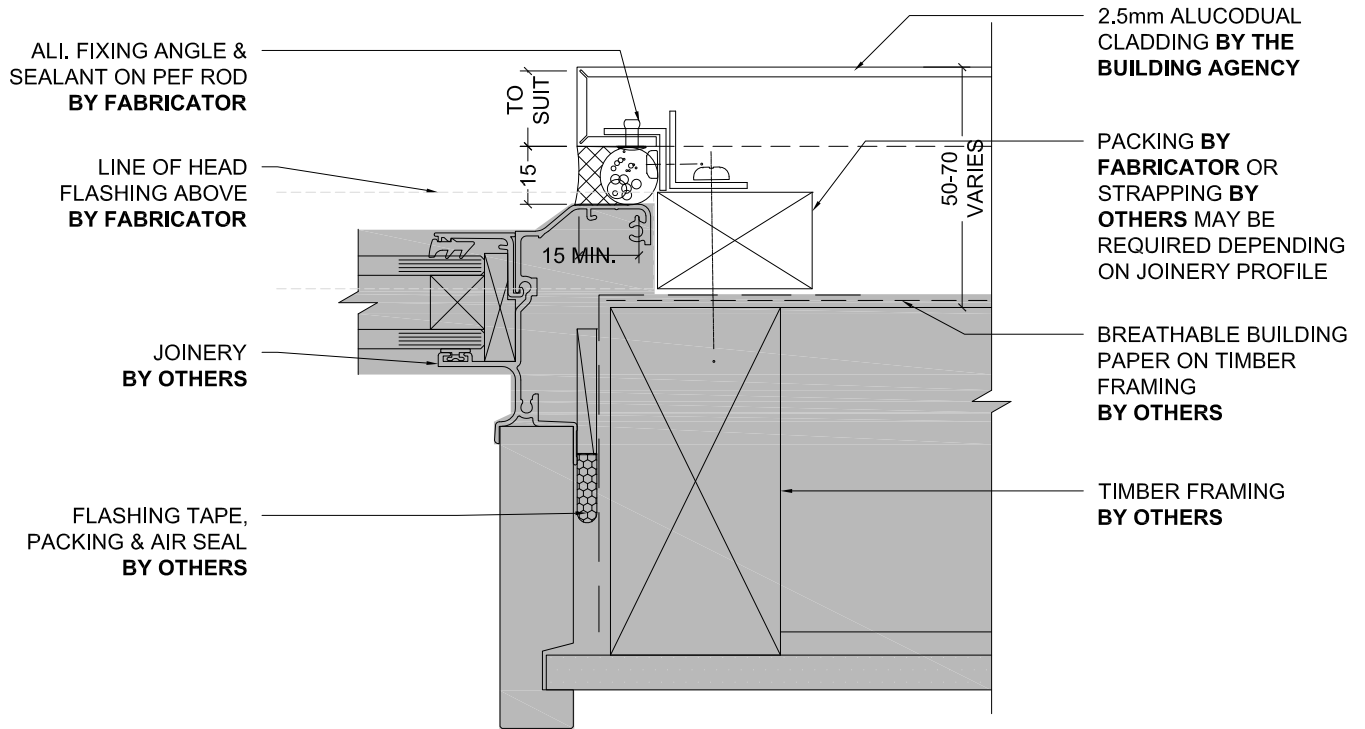
IMPORTANT: ENSURE 15MM MIN CLEARANCE FROM INSIDE OF SILL TRAY TO FLASHING TAPE, FOR PANEL UPSTAND

## WINDOW SILL RESIDENTIAL JOINERY

Detail Number \_\_\_\_\_  
Version \_\_\_\_\_  
3.1.1  
[v1.0]



MATERIALS • SYSTEMS • SOLUTIONS

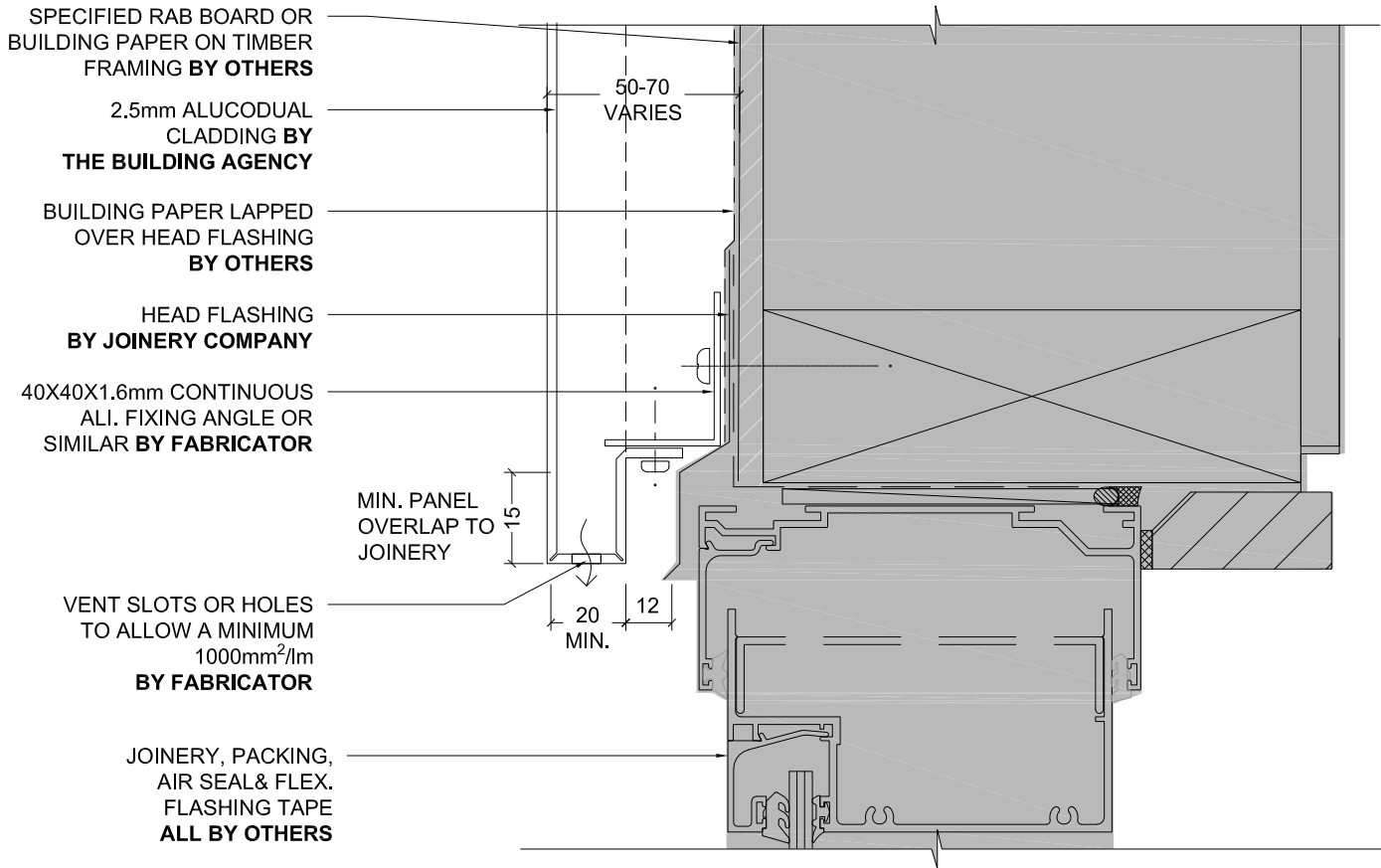


## WINDOW JAMB RESIDENTIAL JOINERY

Detail Number \_\_\_\_\_  
Version \_\_\_\_\_  
3.1.2  
[v1.0]



MATERIALS • SYSTEMS • SOLUTIONS



## WINDOW HEAD COMMERCIAL JOINERY

Detail Number \_\_\_\_\_  
Version \_\_\_\_\_

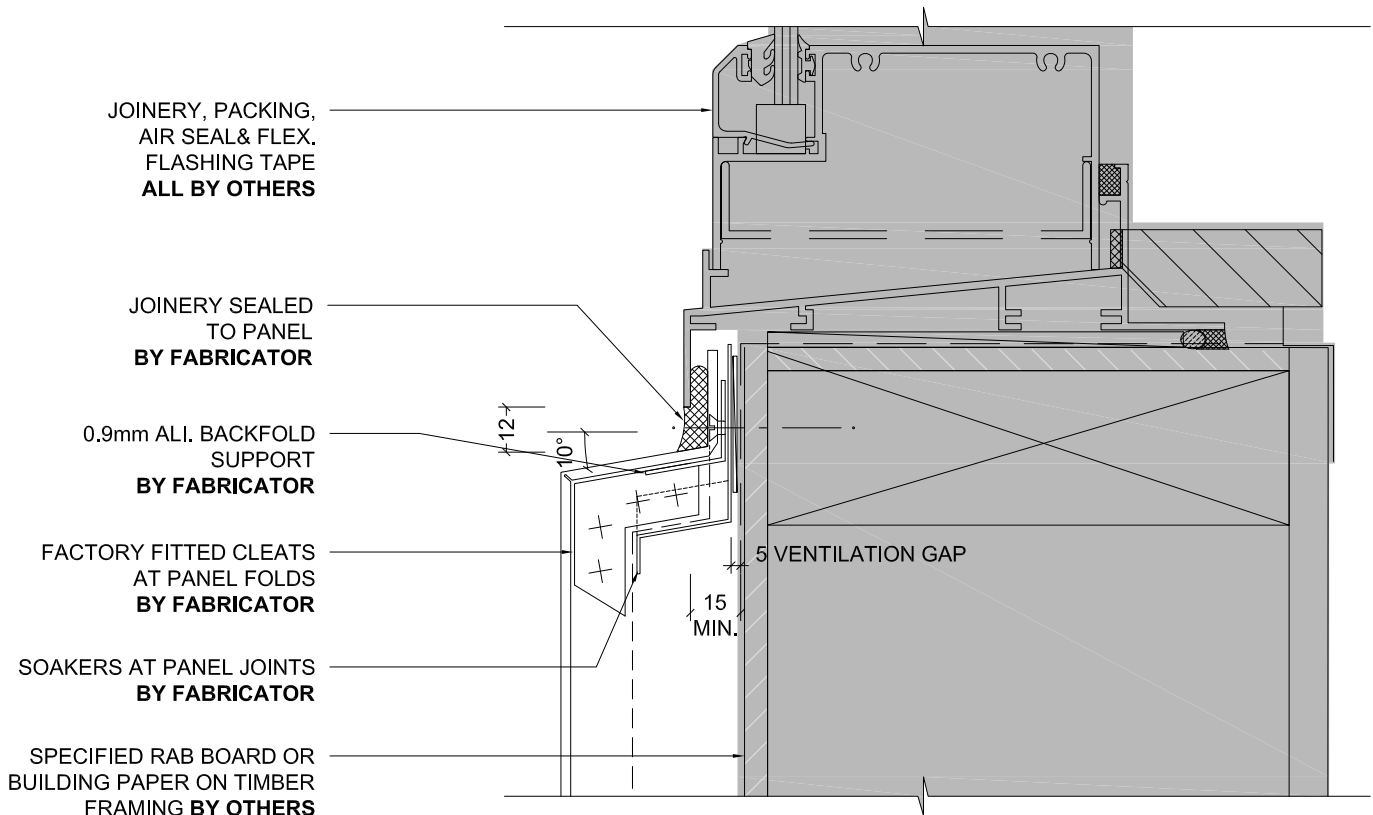
3.2.0

[v1.0]



MATERIALS • SYSTEMS • SOLUTIONS





**NOTE**

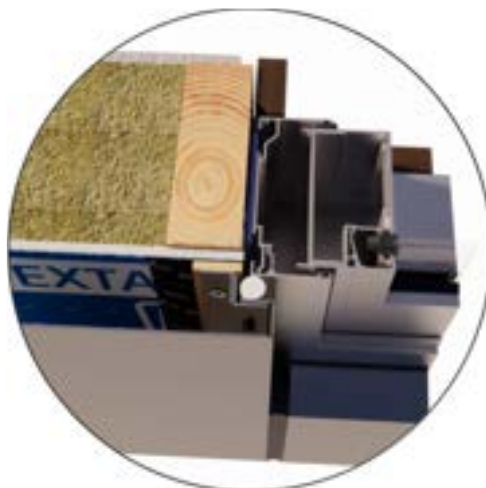
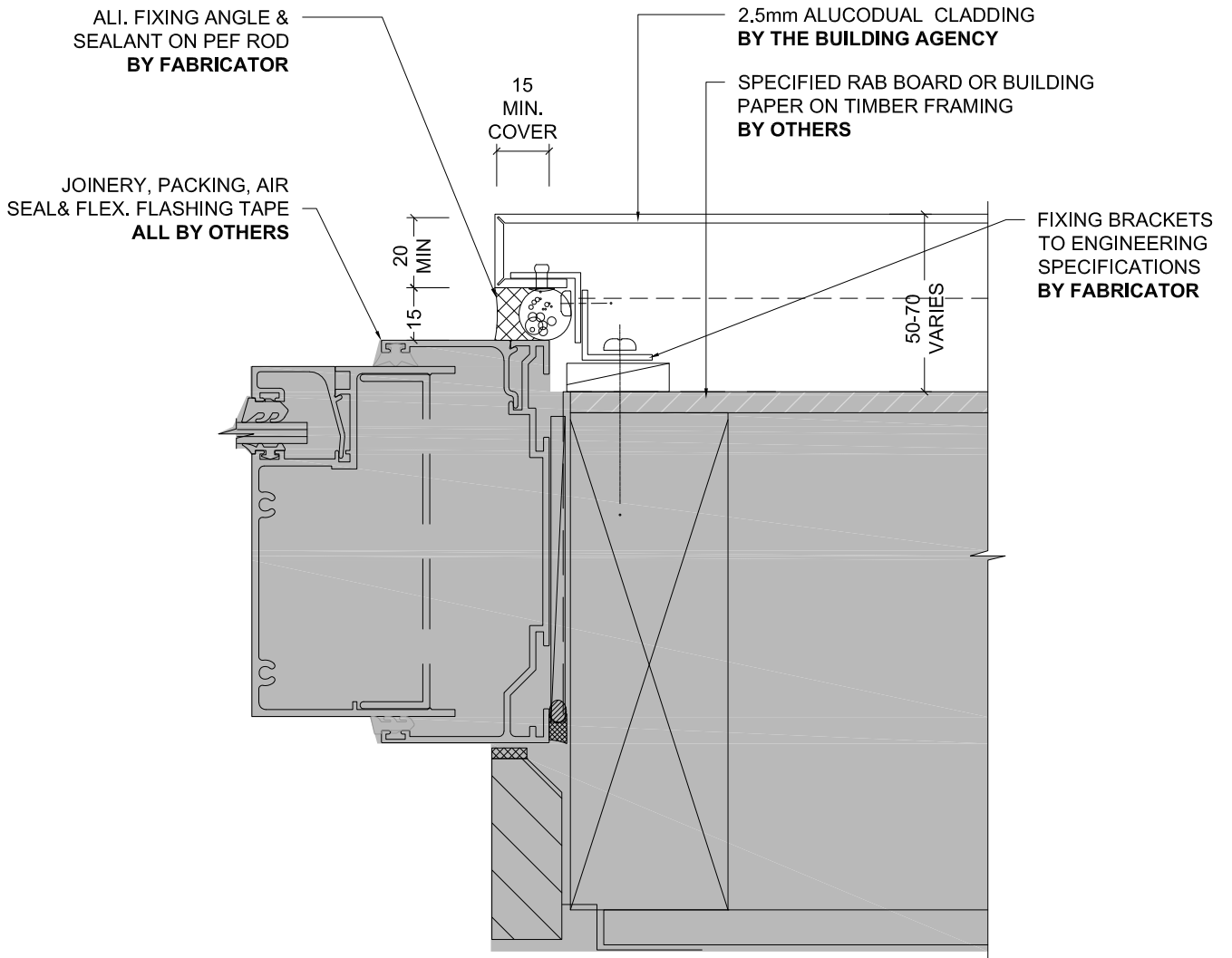
IMPORTANT: ENSURE 15MM MIN CLEARANCE FROM INSIDE OF SILL TRAY TO FLASHING TAPE, FOR PANEL UPSTAND

## WINDOW SILL COMMERCIAL JOINERY

Detail Number \_\_\_\_\_  
Version \_\_\_\_\_  
3.2.1  
[v1.0]



MATERIALS • SYSTEMS • SOLUTIONS

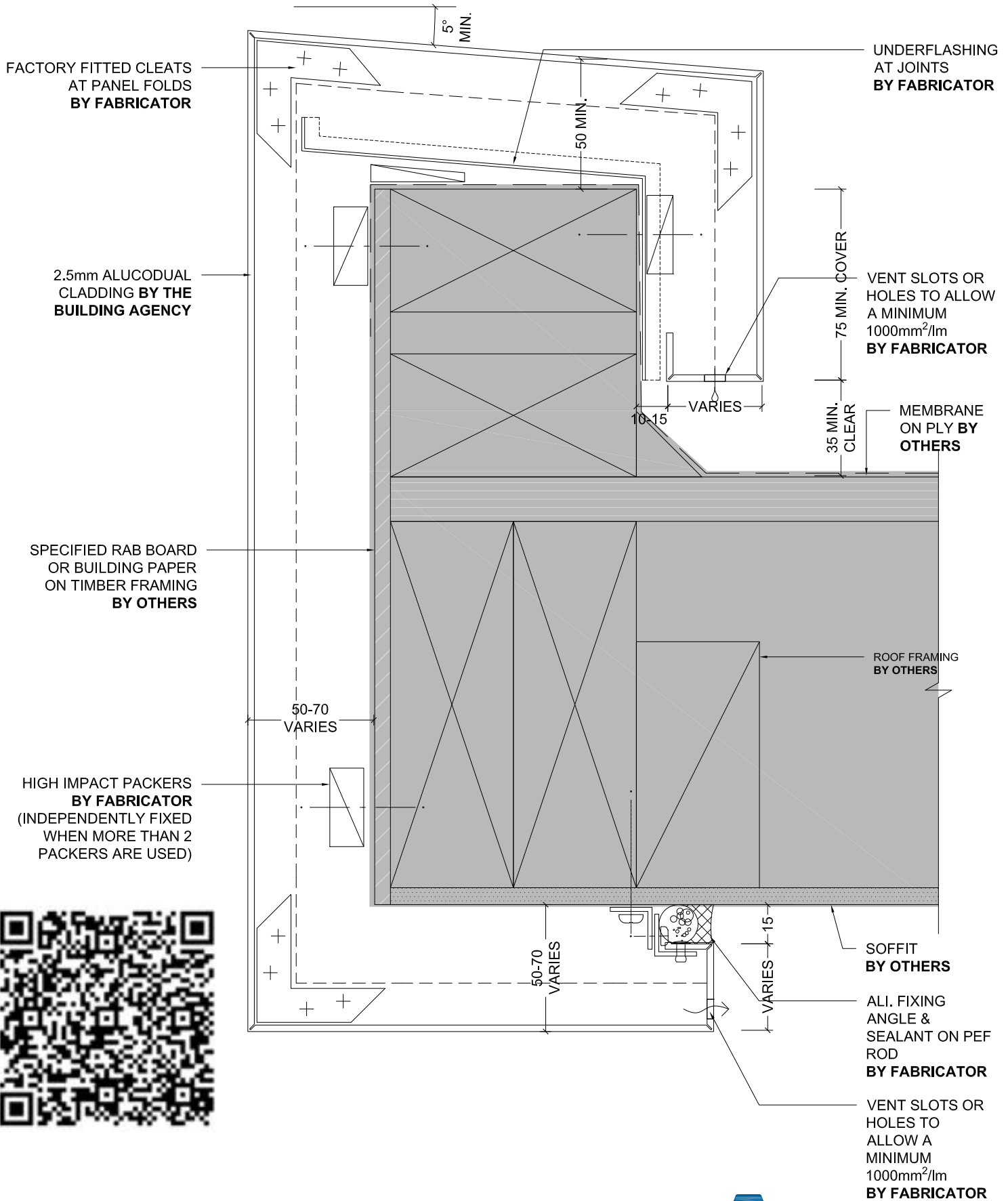


## WINDOW JAMB COMMERCIAL JOINERY

Detail Number \_\_\_\_\_  
Version \_\_\_\_\_  
3.2.2  
[v1.0]



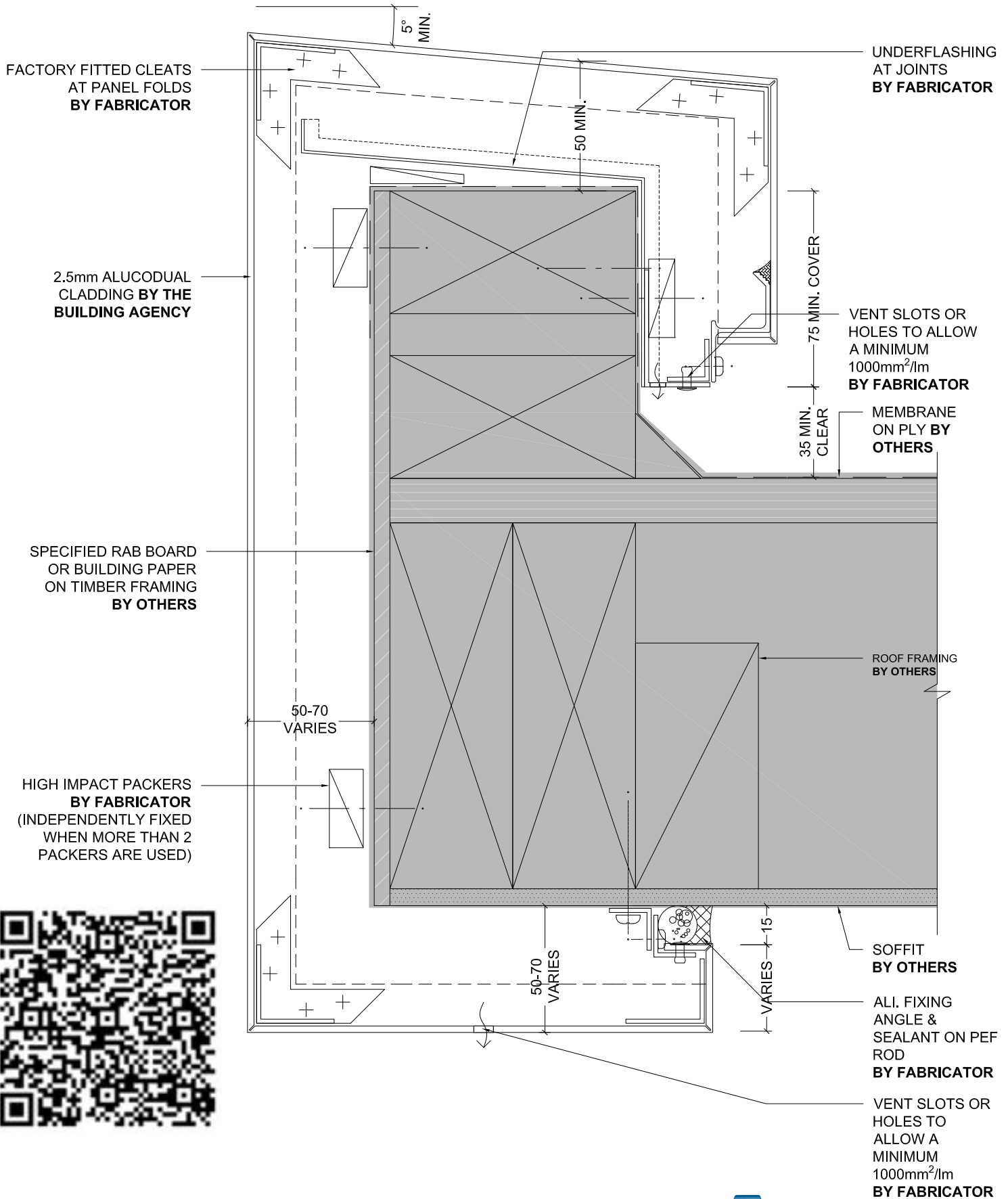
MATERIALS • SYSTEMS • SOLUTIONS



## FASCIA - SOFFIT BY OTHERS AT LOW WIND ZONE

Detail Number \_\_\_\_\_  
Version \_\_\_\_\_  
4.0  
[v1.0]

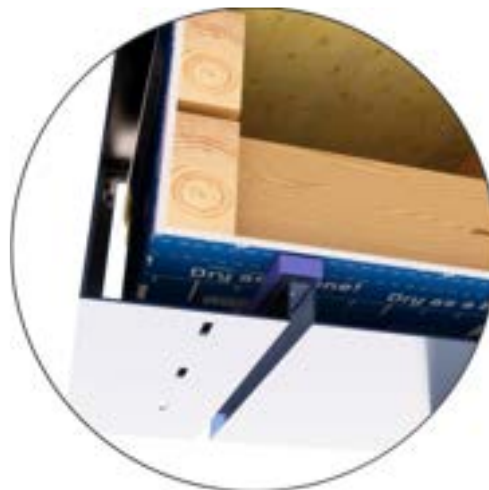
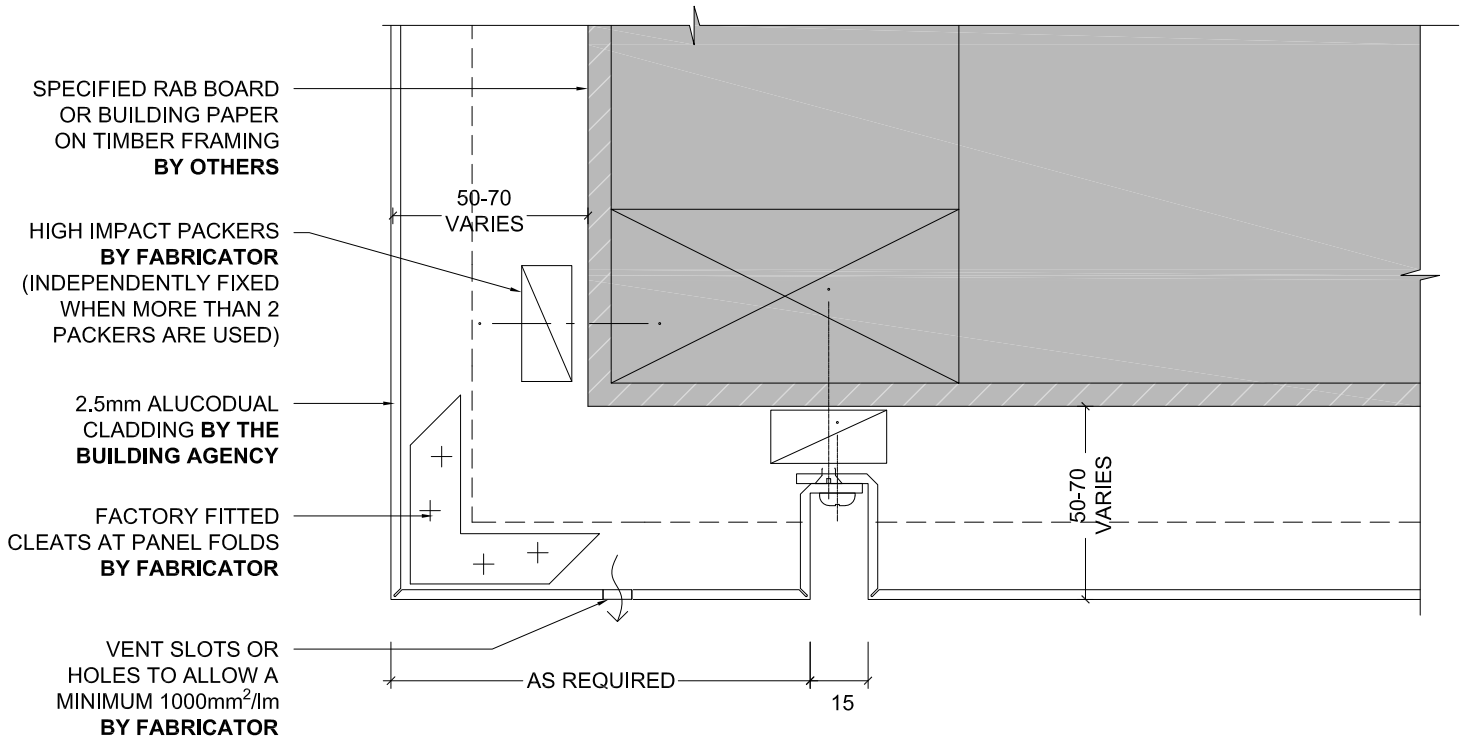




## FASCIA - SOFFIT BY OTHERS AT HIGH WIND ZONE

Detail Number \_\_\_\_\_  
 Version \_\_\_\_\_  
 4.1  
 [v1.0]

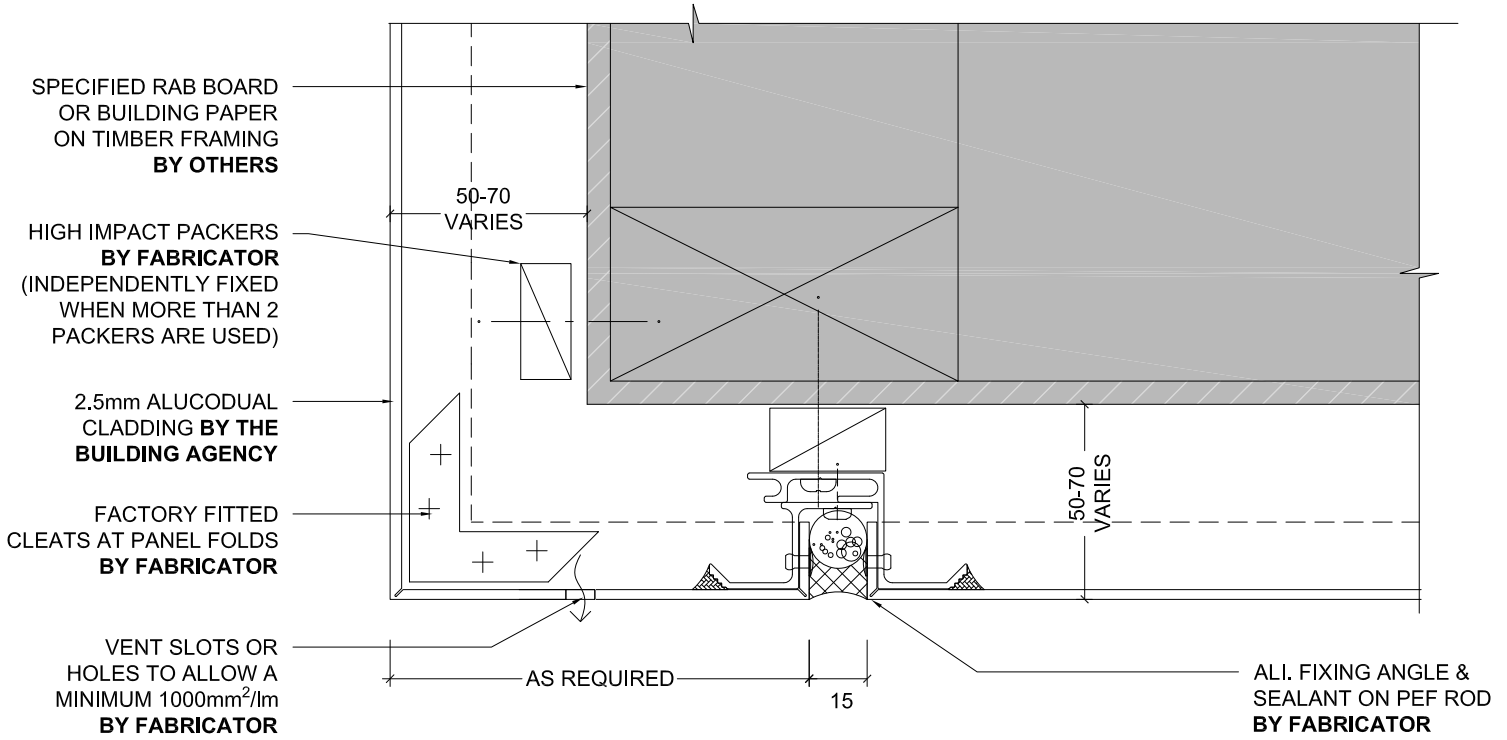




## SOLID ALUMINIUM FASCIA TO SOFFIT

Detail Number \_\_\_\_\_  
Version \_\_\_\_\_  
4.2.0  
[v1.0]



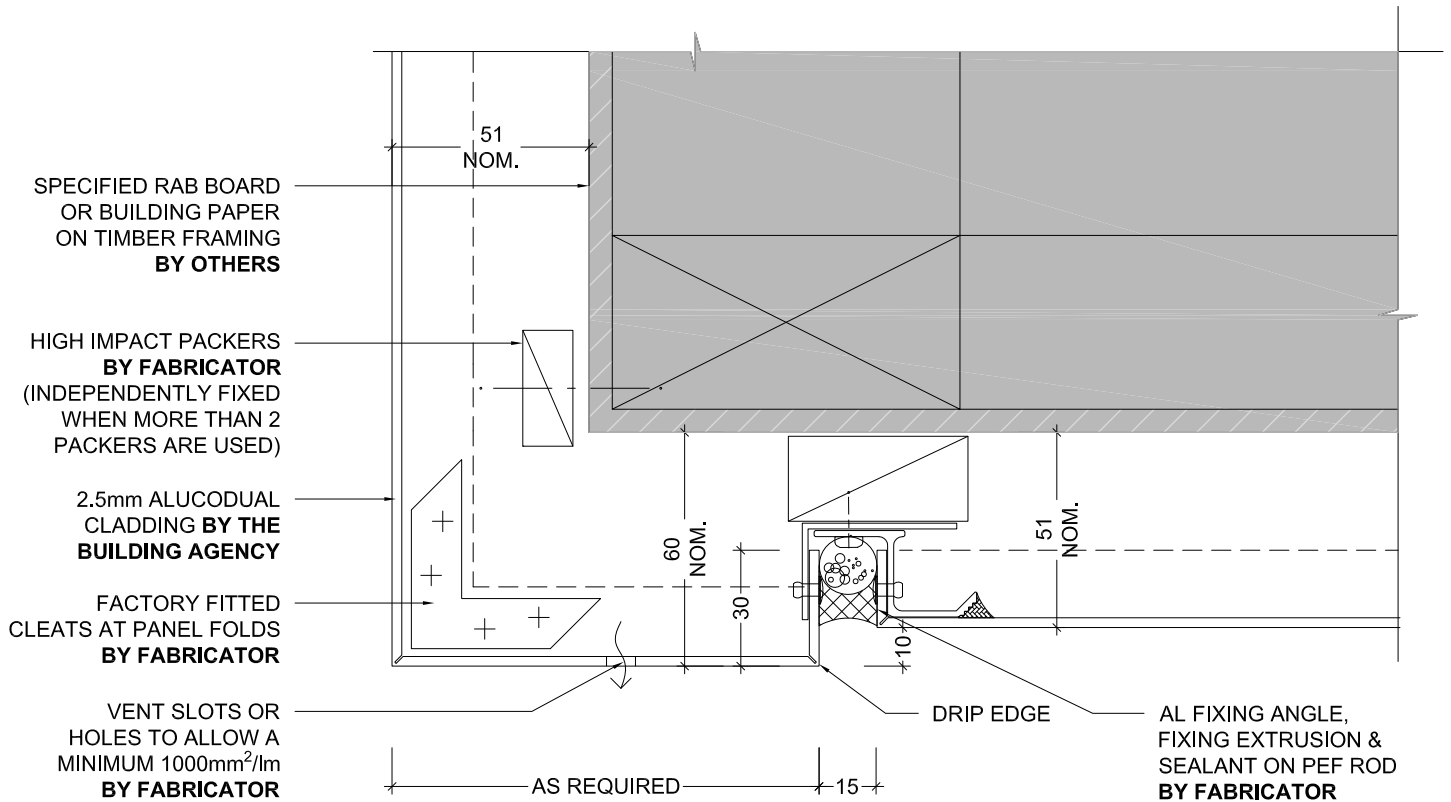


## SOLID ALUMINIUM FASCIA TO SOFFIT OP.2

Detail Number \_\_\_\_\_  
4.2.1  
Version \_\_\_\_\_  
[v1.0]



MATERIALS • SYSTEMS • SOLUTIONS

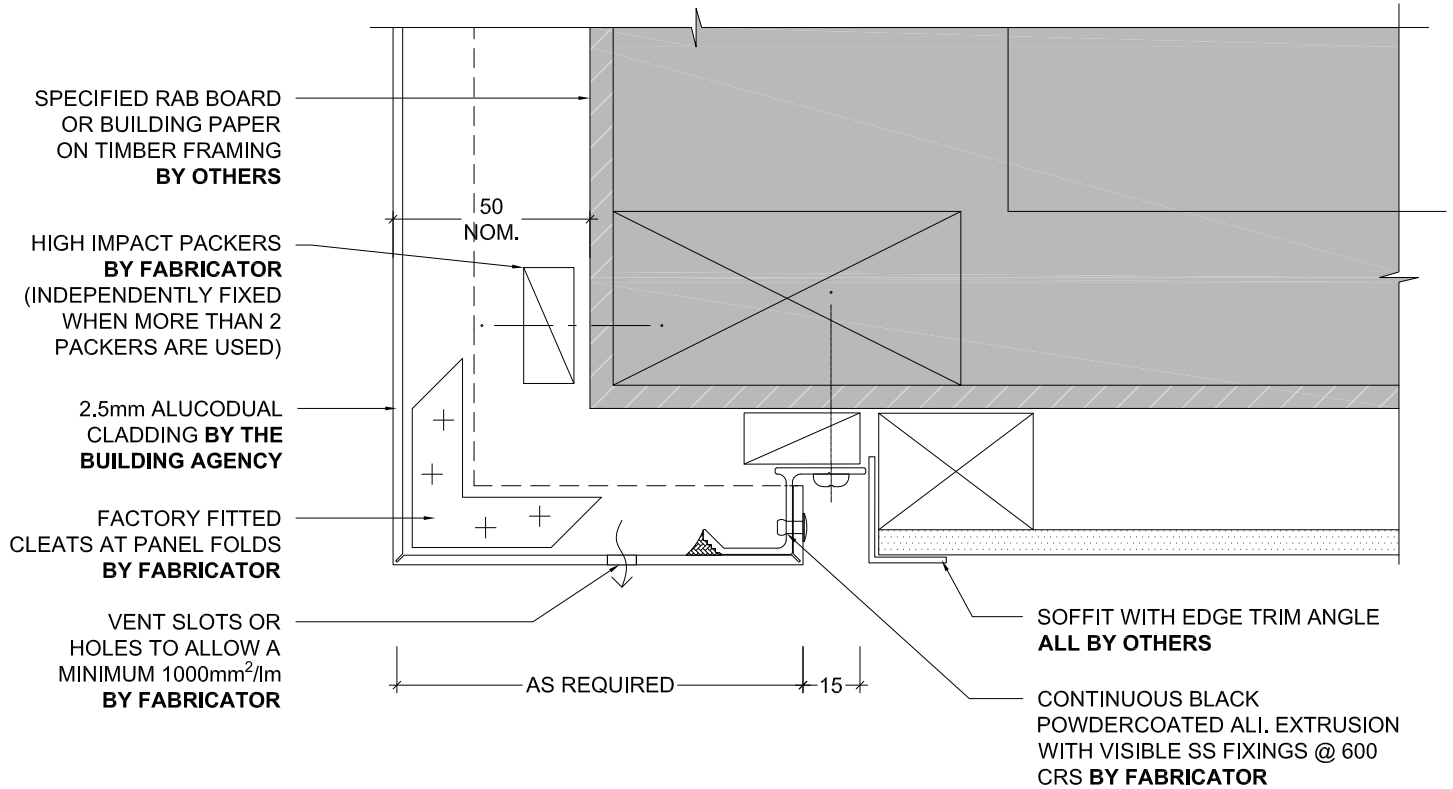


## DRIP EDGE DETAIL

Detail Number \_\_\_\_\_  
 Version \_\_\_\_\_  
 [v1.0]



MATERIALS • SYSTEMS • SOLUTIONS

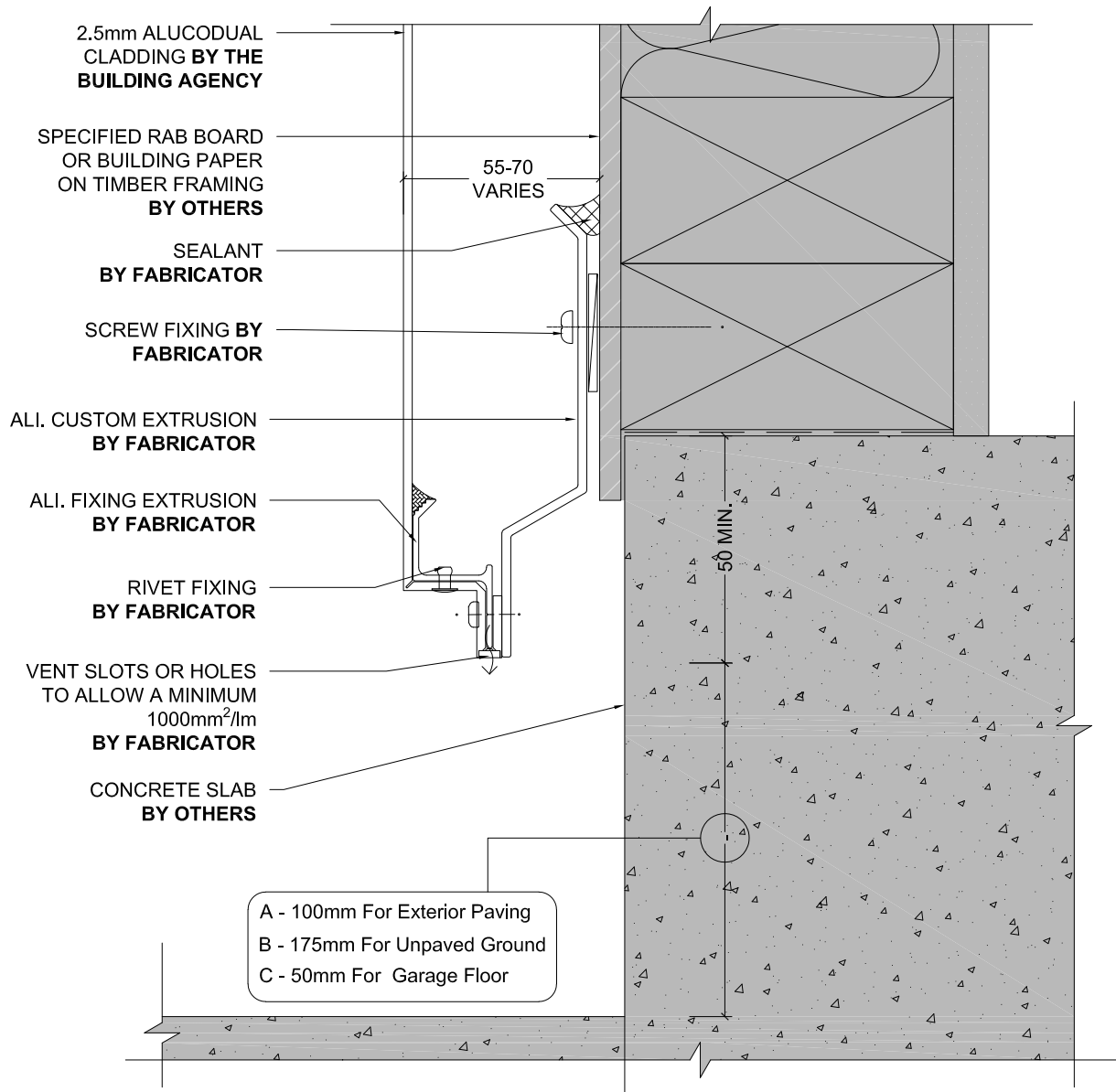


## OPEN FLUSH SOFFIT JOINT

Detail Number \_\_\_\_\_  
Version \_\_\_\_\_  
4.3.1  
[v1.0]







## BASE DETAIL

Detail Number \_\_\_\_\_

Version \_\_\_\_\_

5.0

[v1.0]



MATERIALS • SYSTEMS • SOLUTIONS

# ALUCODUAL

# WAB SYSTEM

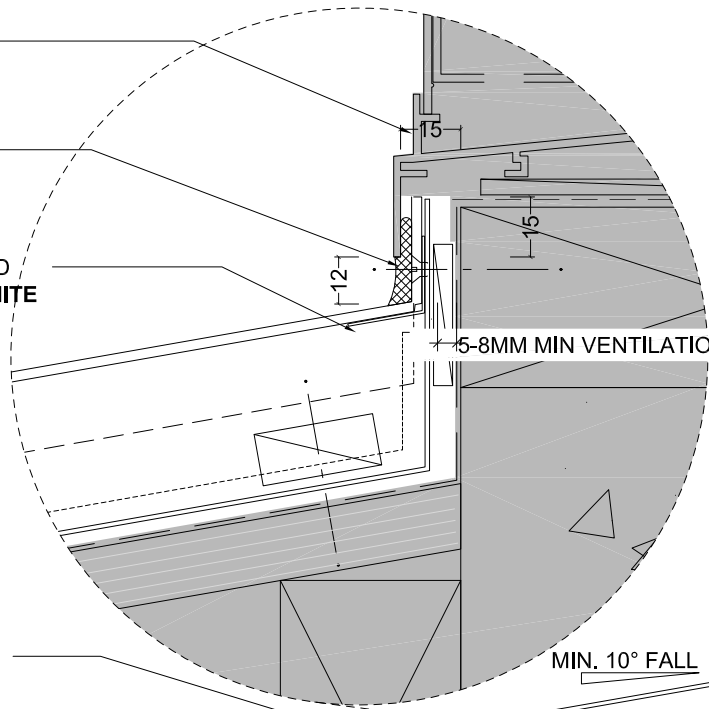
NOTE  
ENSURE 15MM MIN CLEARANCE AT SILL TRAY FOR PANEL UPSTAND  
60MM MIN CLEARANCE FROM BOTTOM OF SILL TRAY LEF TO FRAMING BELOW



JOINERY, PACKING,  
AIR SEAL ALL BY  
OTHERS

PANEL SEALED TO  
SILL TRAY BY  
SYMONITE

0.9MM ALI. BACKFOLD  
SUPPORT BY SYMONITE



5-8MM MIN VENTILATION GAP

UNDERFLASHING @  
PANEL JOINTS  
BY FABRICATOR

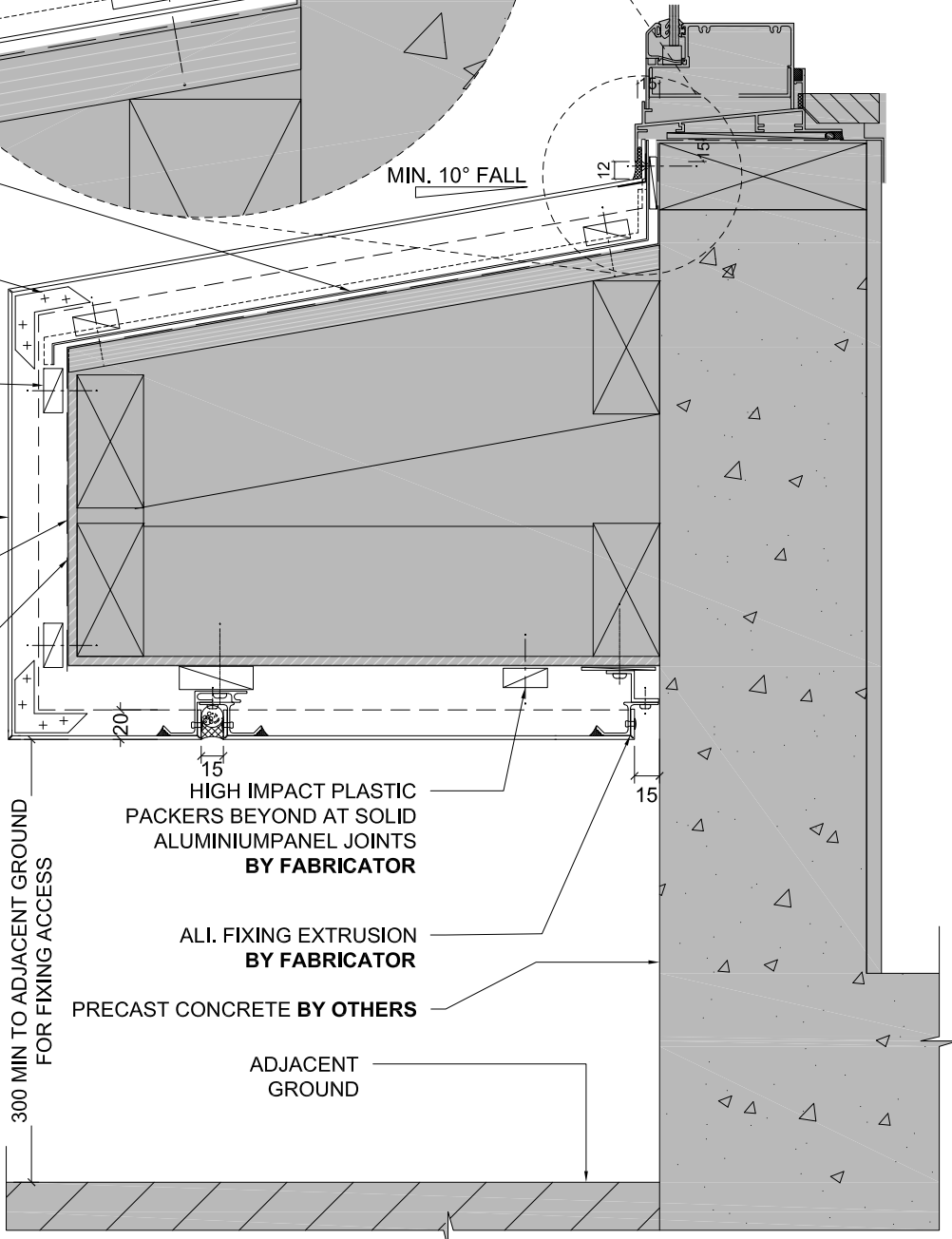
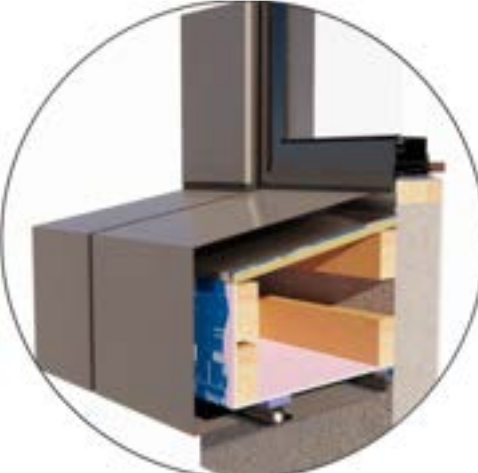
FACTORY FITTED CLEATS  
AT PANEL FOLDS  
BY FABRICATOR

HIGH IMPACT PACKERS  
BY FABRICATOR  
(INDEPENDENTLY FIXED WHEN  
MORE THAN 2 PACKERS ARE  
USED)

2.5mm ALUCODUAL  
CLADDING BY THE  
BUILDING AGENCY

SPECIFIED RAB BOARD  
OR BUILDING PAPER  
OVER TIMBER FRAMING  
BY OTHERS

SELECTED MEMBRANE  
BY OTHERS



MIN. 10° FALL

40  
NOM.

50  
NOM.

300 MIN TO ADJACENT GROUND  
FOR FIXING ACCESS

HIGH IMPACT PLASTIC  
PACKERS BEYOND AT SOLID  
ALUMINIUM PANEL JOINTS  
BY FABRICATOR

ALI. FIXING EXTRUSION  
BY FABRICATOR

PRECAST CONCRETE BY OTHERS

ADJACENT  
GROUND

## EYEBROW SILL DETAIL

Detail Number \_\_\_\_\_

5.1

Version \_\_\_\_\_

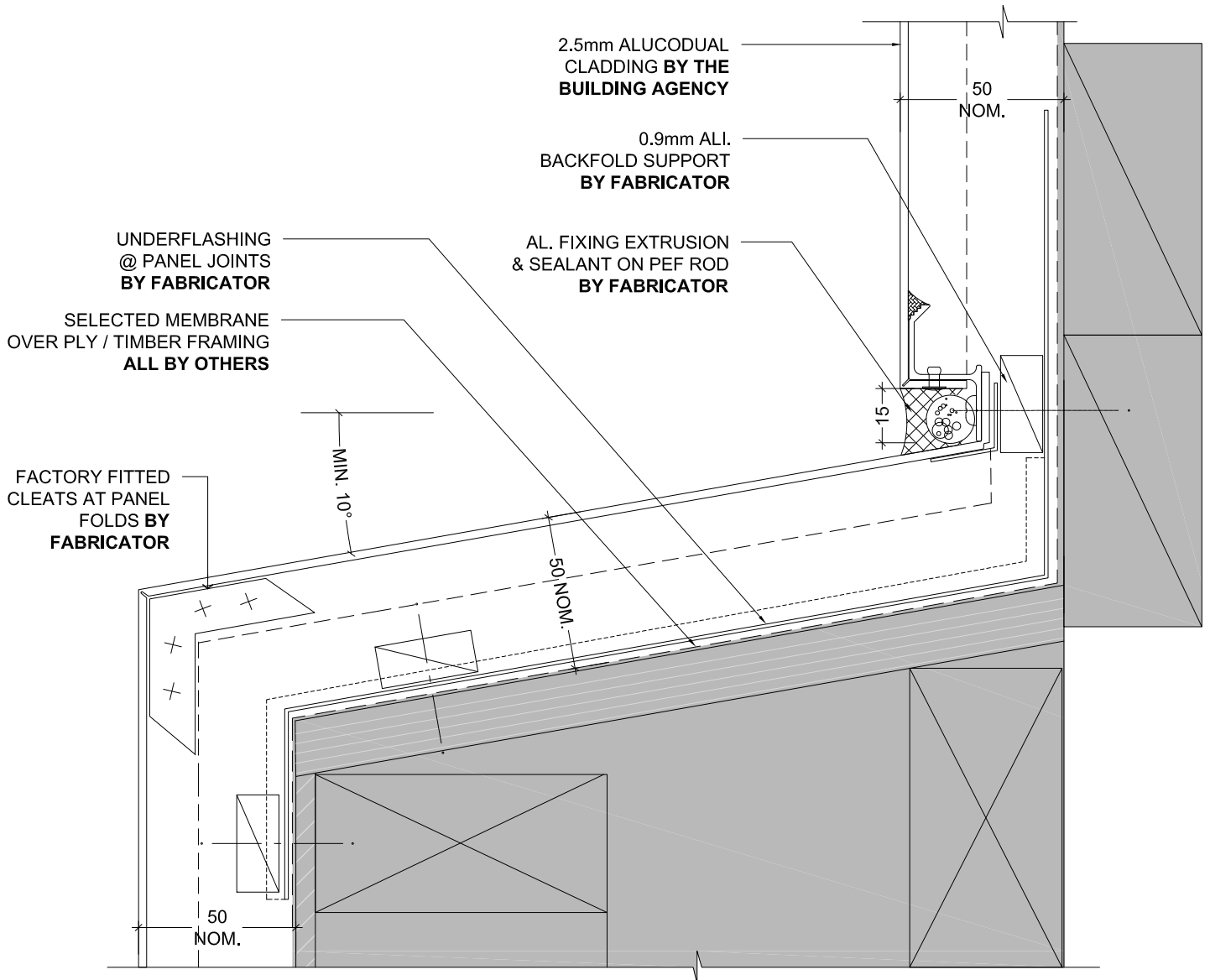
[v1.0]



MATERIALS • SYSTEMS • SOLUTIONS

# ALUCODUAL

WAB SYSTEM



## UPSTAND DETAIL

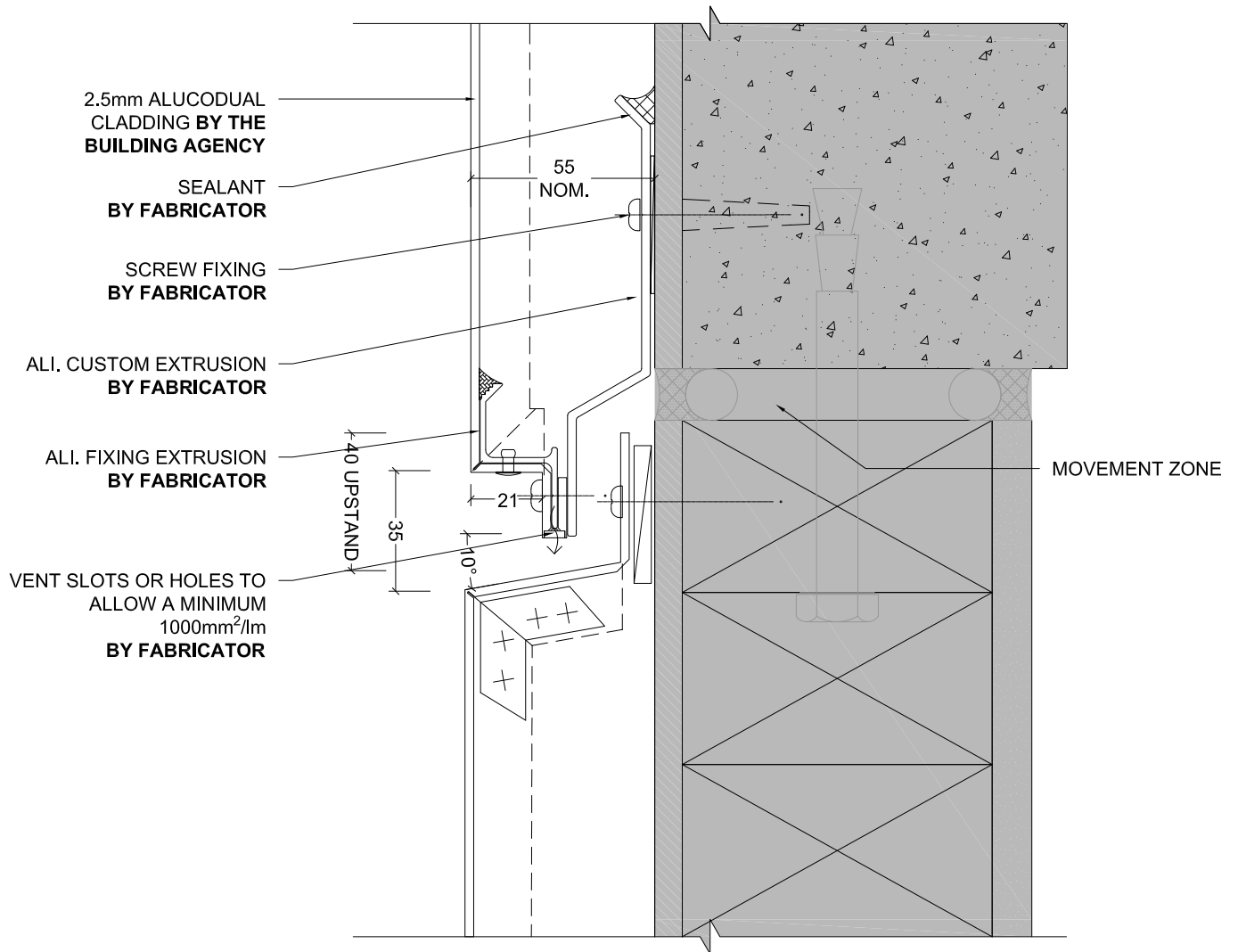
Detail Number \_\_\_\_\_  
Version \_\_\_\_\_

5.2

[v1.0]



MATERIALS • SYSTEMS • SOLUTIONS



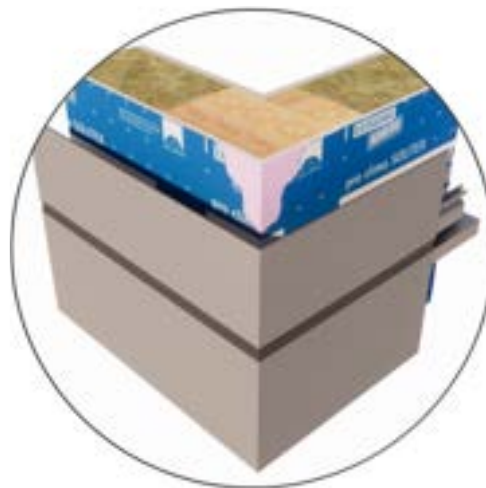
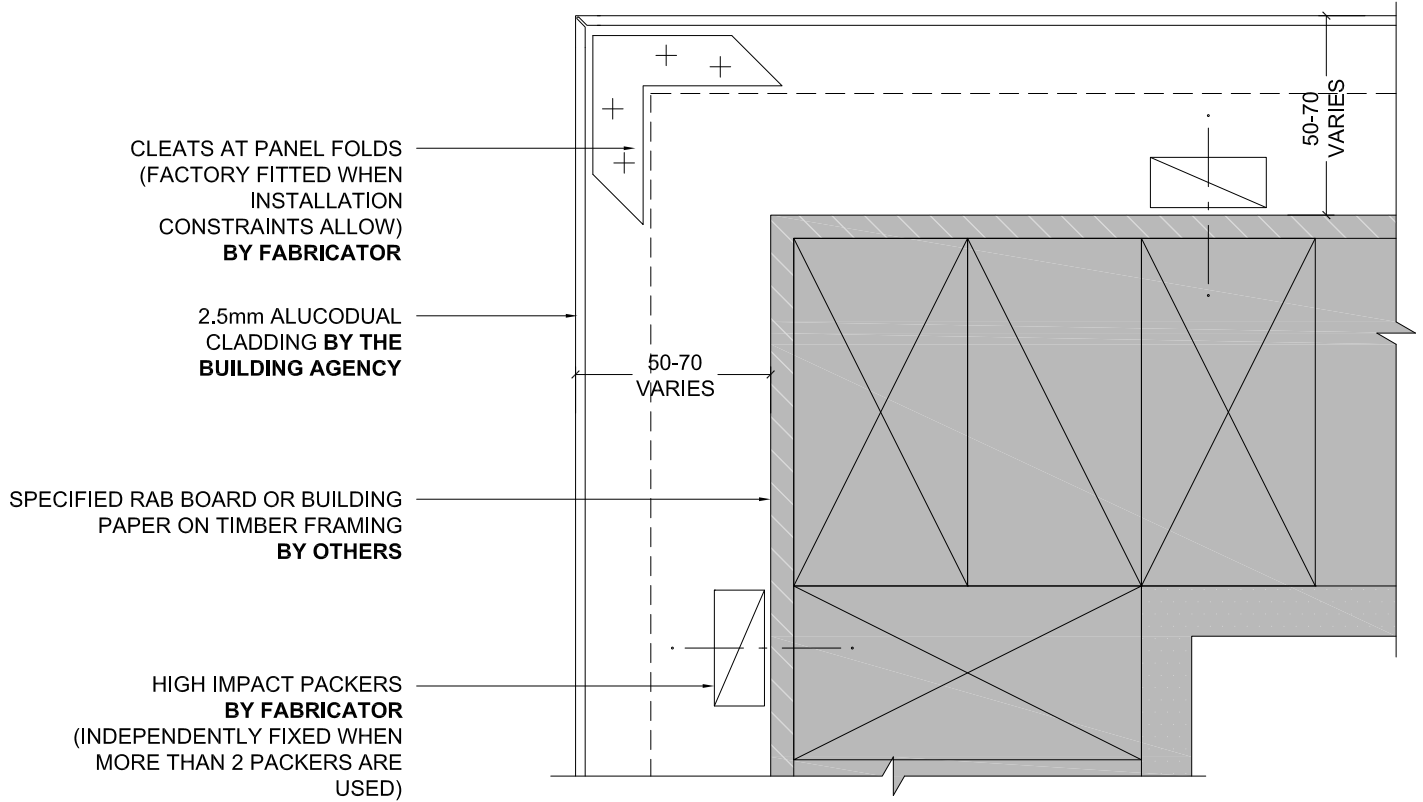
## INTER - STOREY JOINT

Detail Number \_\_\_\_\_  
Version \_\_\_\_\_

5.3

[v1.0]



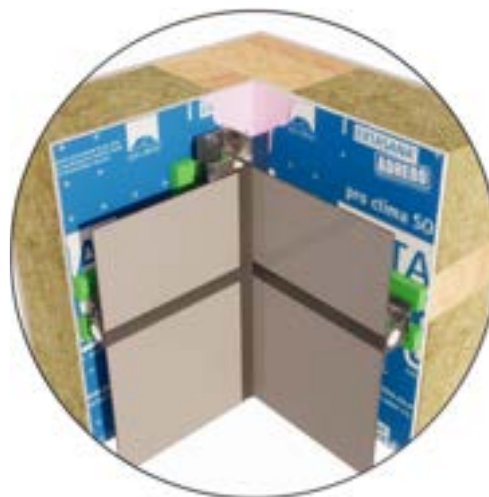
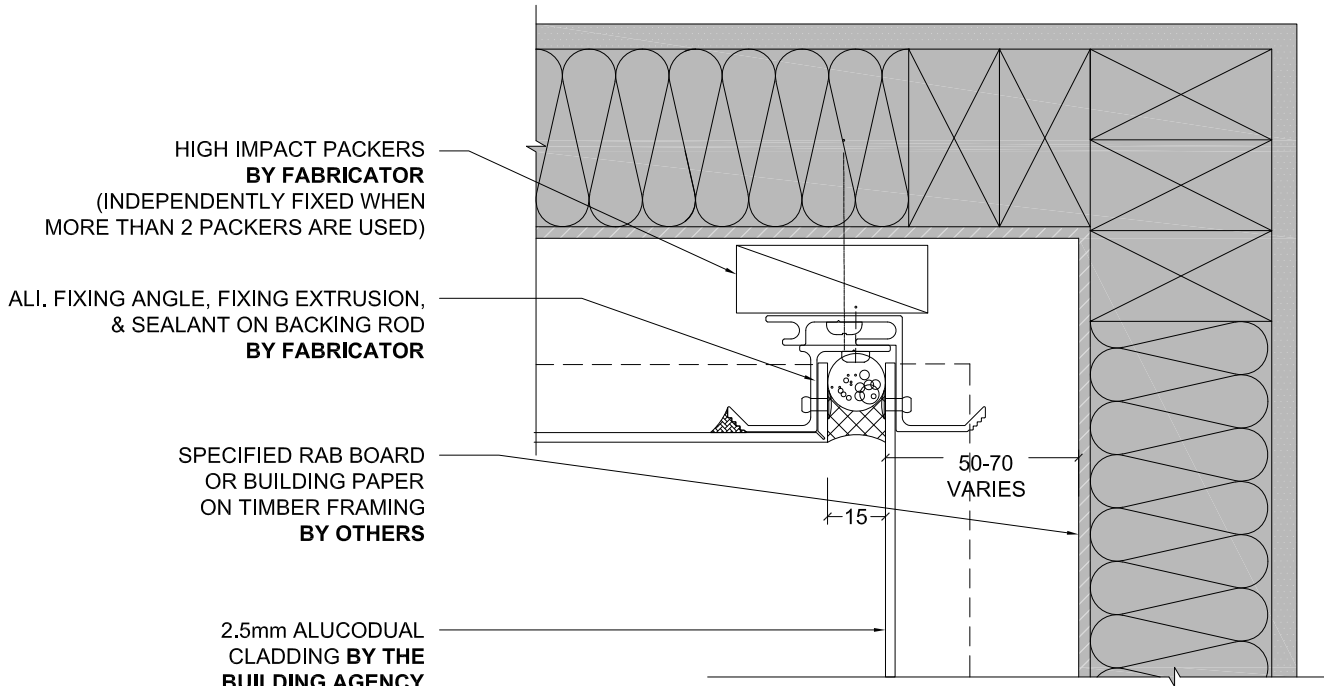


## EXTERNAL CORNER

Detail Number  
\_\_\_\_\_  
Version 6.0  
\_\_\_\_\_  
[v1.0]



MATERIALS • SYSTEMS • SOLUTIONS

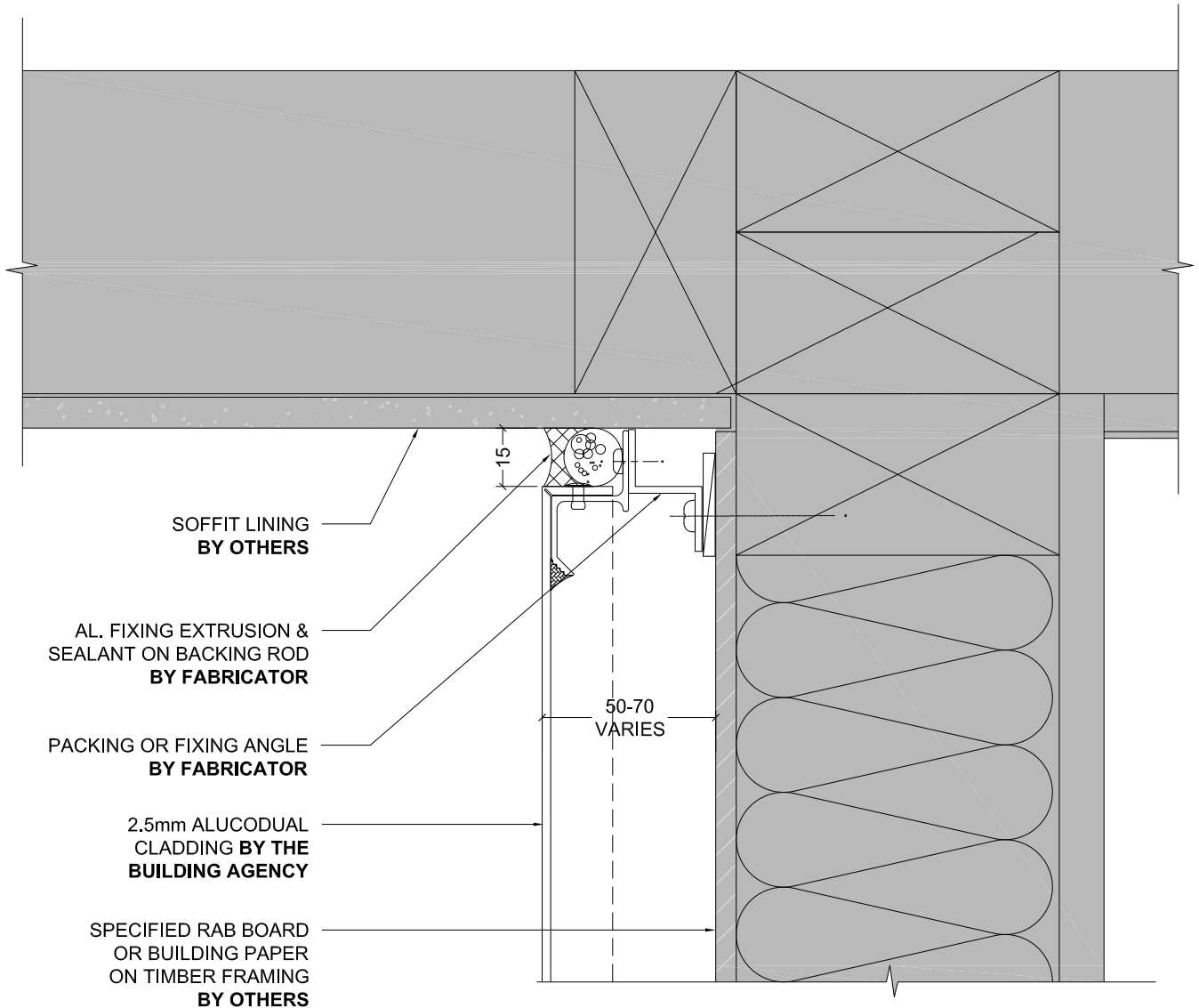


## INTERNAL CORNER

Detail Number  
\_\_\_\_\_  
Version  
\_\_\_\_\_  
6.1  
[v1.0]



MATERIALS • SYSTEMS • SOLUTIONS

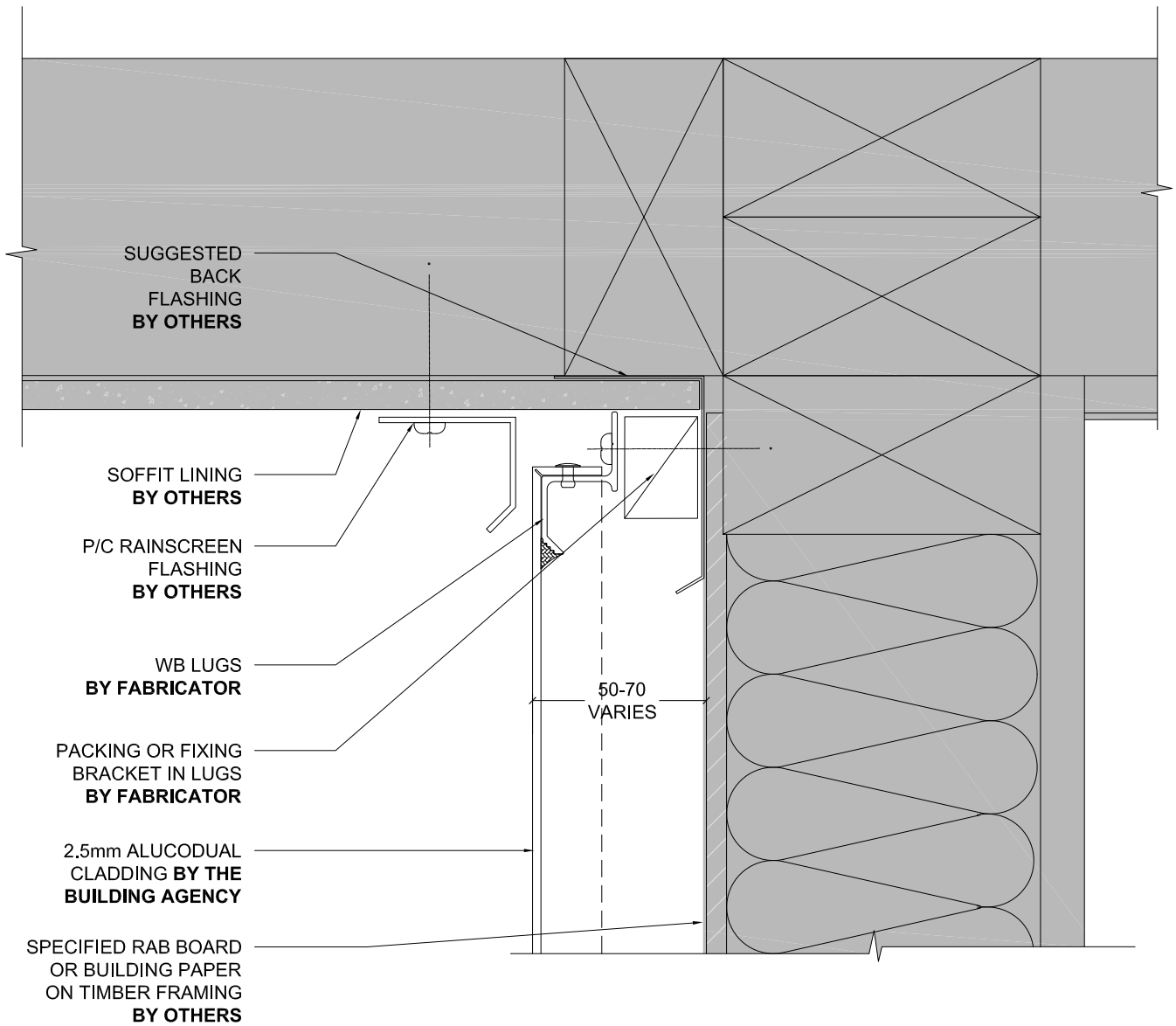


## WALL TO SOFFIT JUNCTION OP 1

Detail Number \_\_\_\_\_  
Version \_\_\_\_\_  
[v1.0]



MATERIALS • SYSTEMS • SOLUTIONS



## WALL TO SOFFIT JUNCTION OP 2

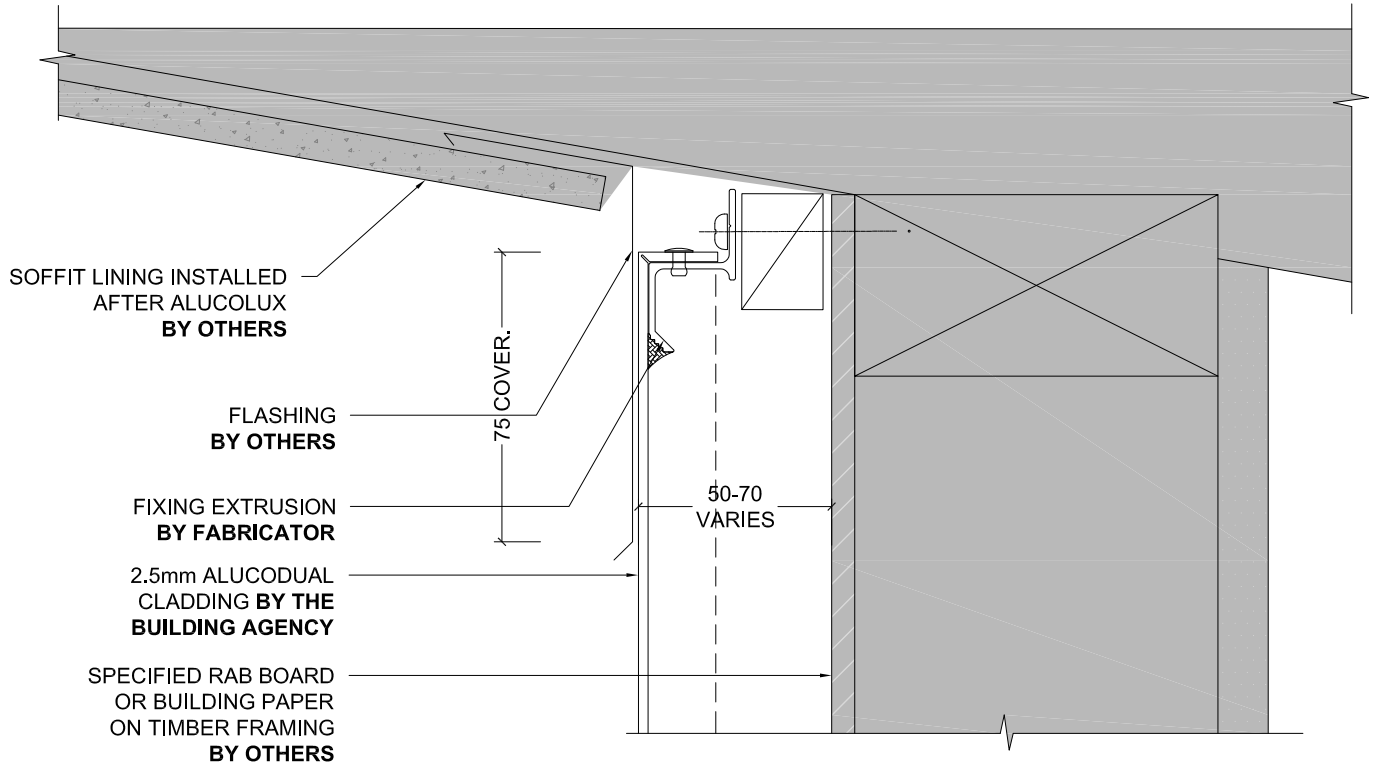
Detail Number \_\_\_\_\_  
Version \_\_\_\_\_

7.1

[v1.0]





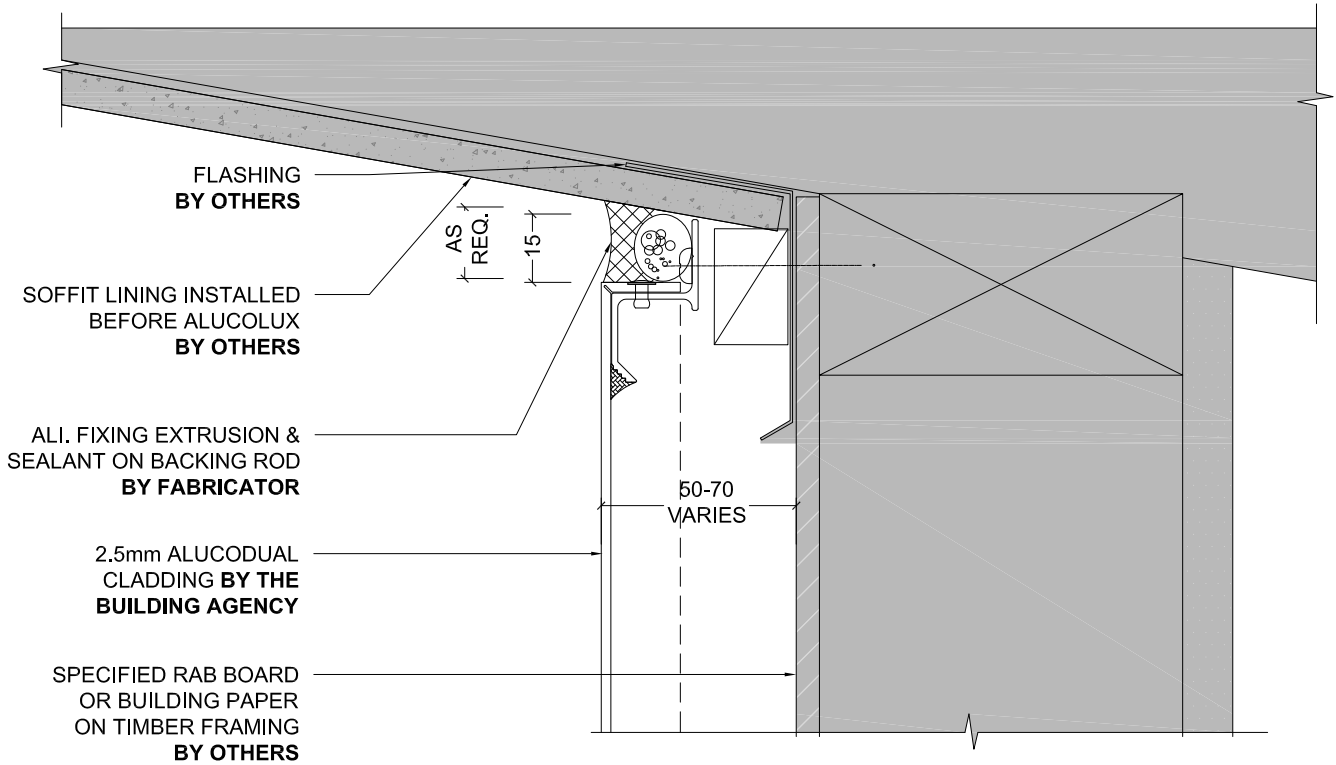


## WALL TO RAKING SOFFIT JUNCTION OP 1

Detail Number \_\_\_\_\_  
Version \_\_\_\_\_  
7.2.0  
[v1.0]



MATERIALS • SYSTEMS • SOLUTIONS

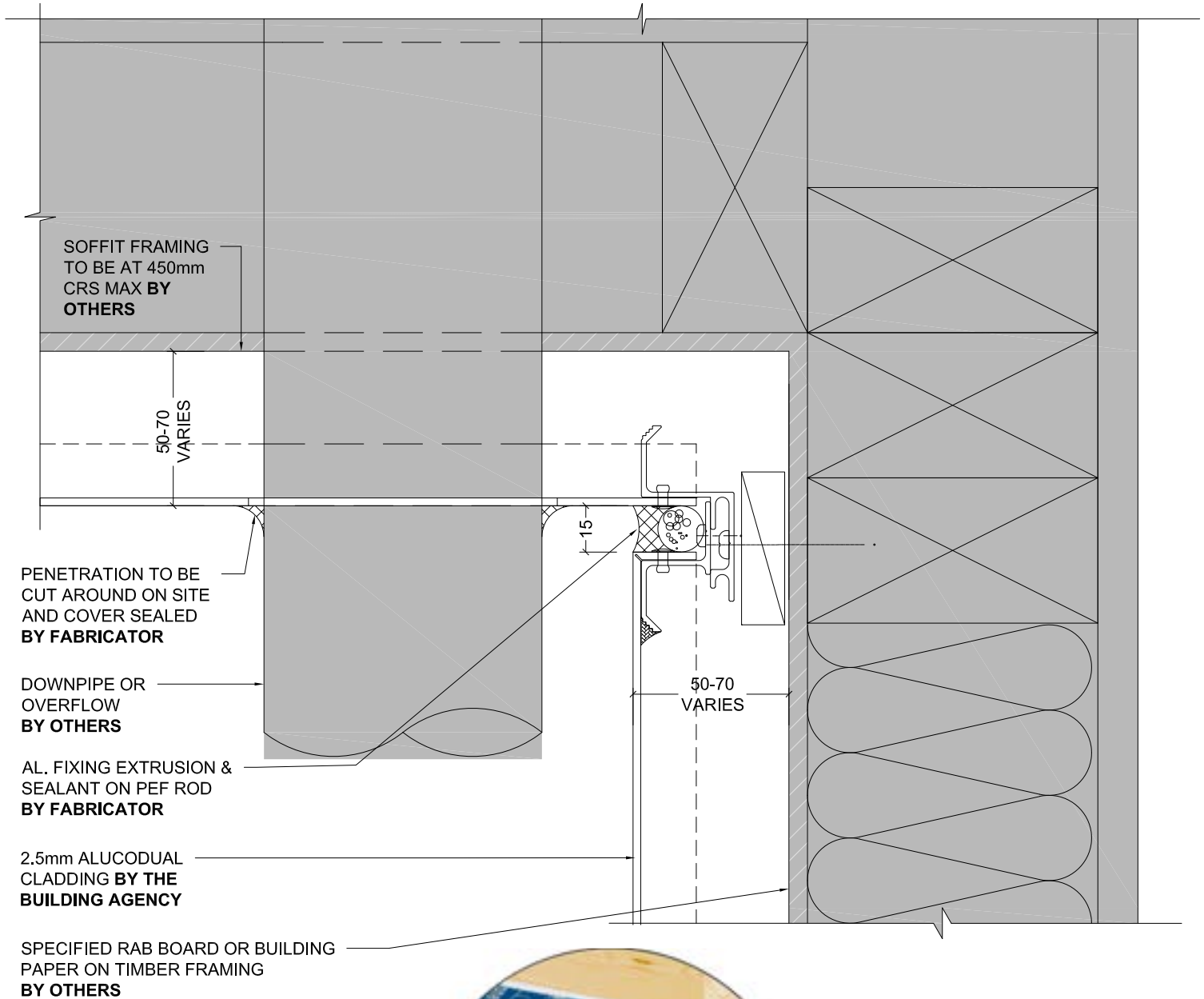


## WALL TO RAKING SOFFIT JUNCTION OP 2

Detail Number \_\_\_\_\_  
Version \_\_\_\_\_  
7.2.1  
[v1.0]



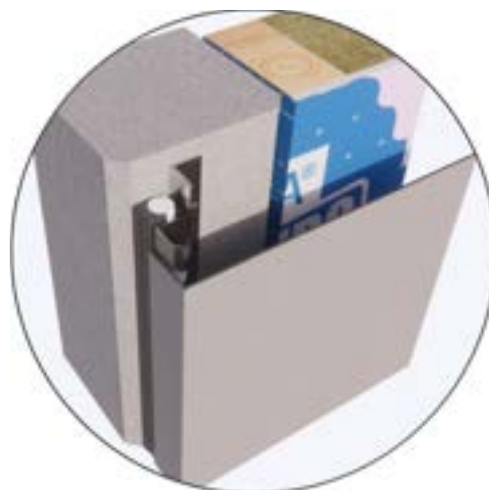
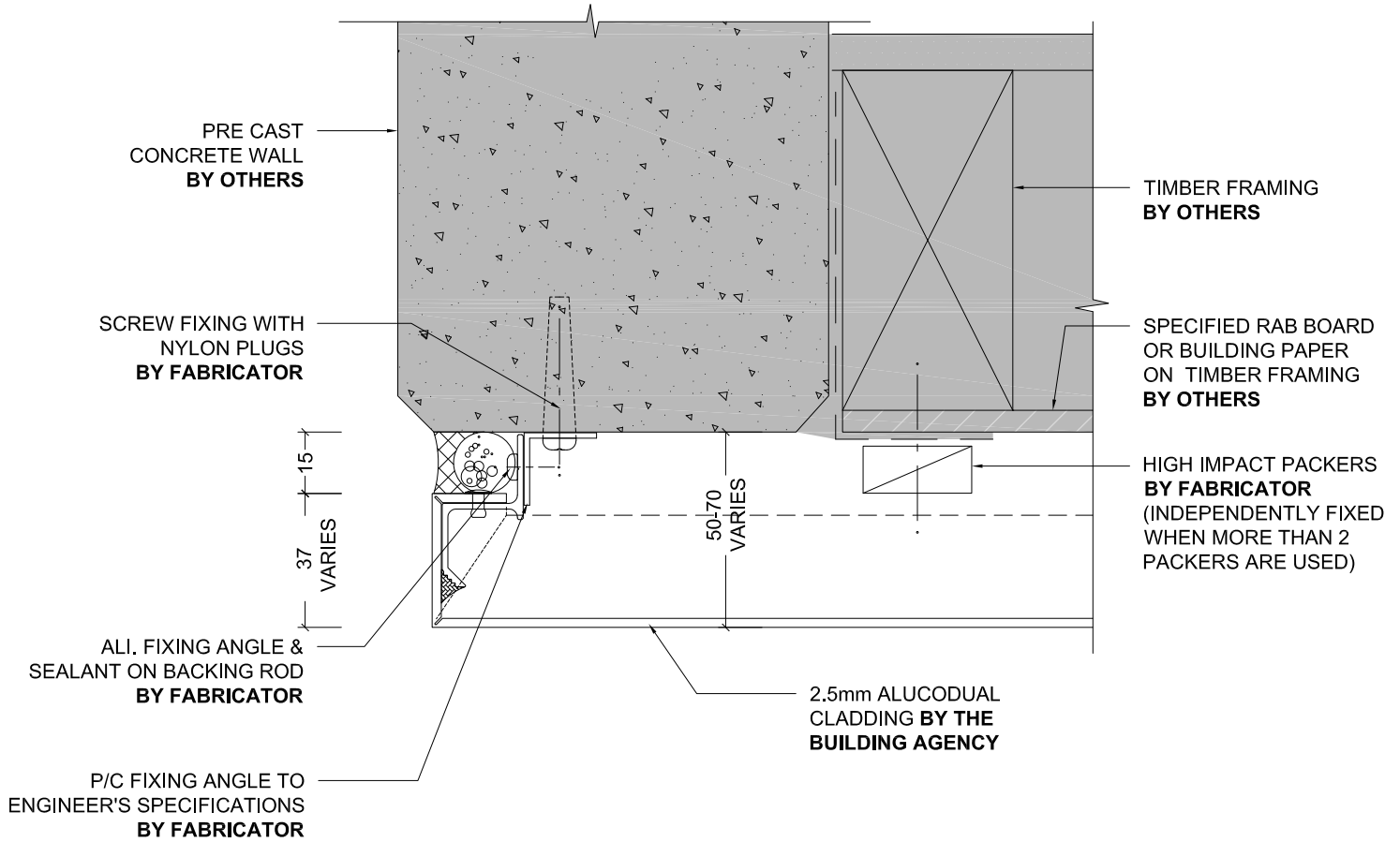
MATERIALS • SYSTEMS • SOLUTIONS



## WALL TO SOFFIT & DOWNPIPE PENETRATION

Detail Number \_\_\_\_\_  
Version \_\_\_\_\_  
7.3  
[v1.0]

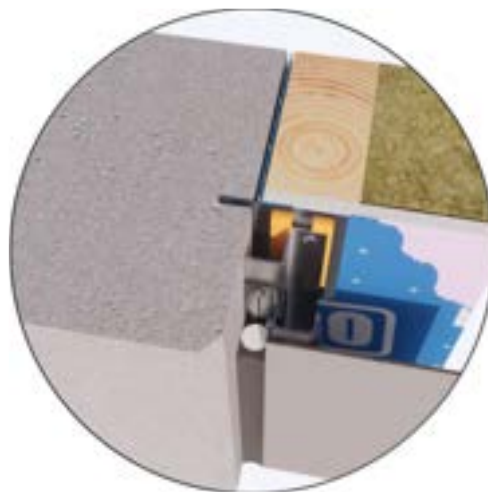
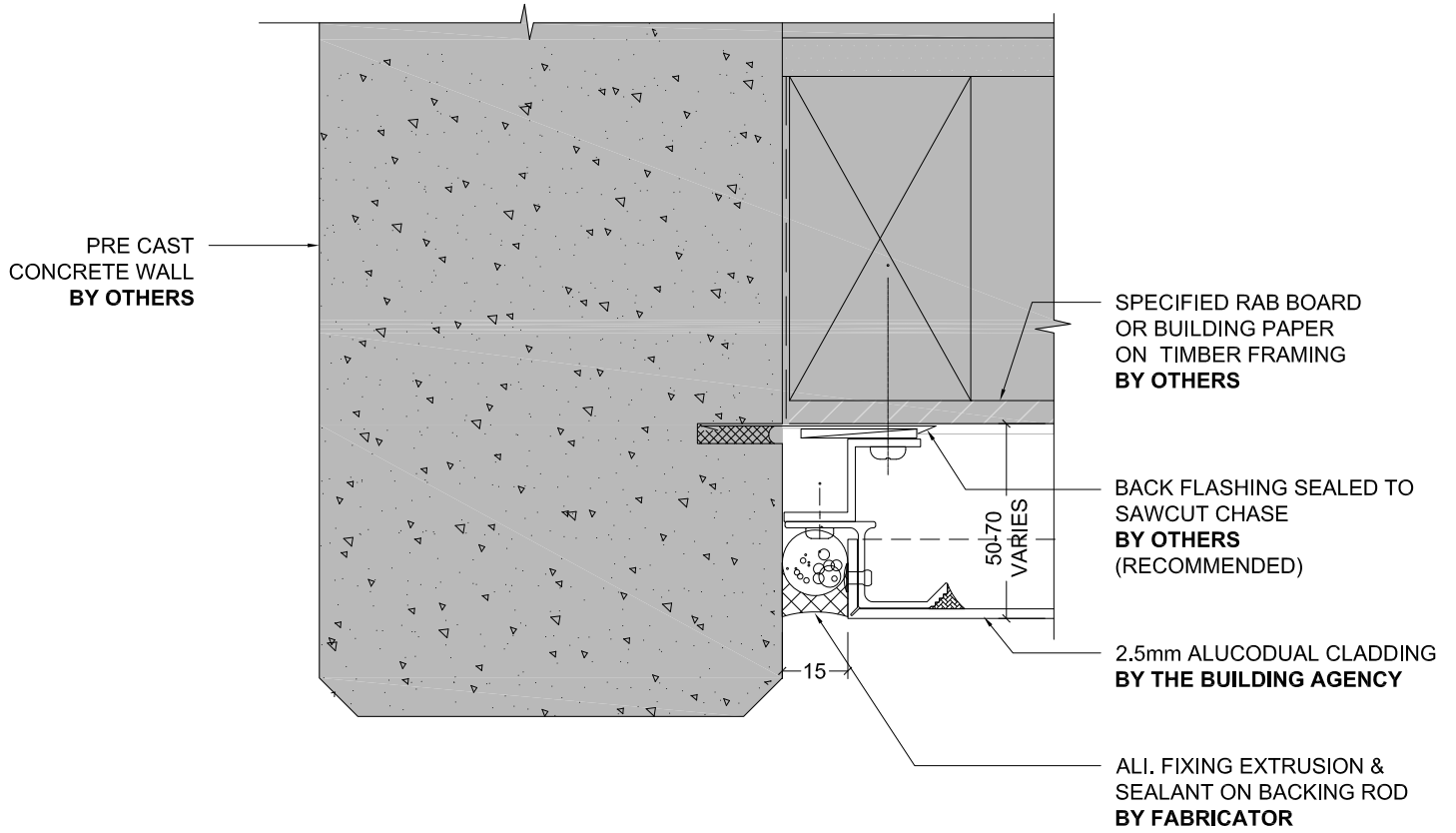




## PRECAST CONCRETE WALL JUNCTION

Detail Number \_\_\_\_\_  
Version \_\_\_\_\_  
8.0  
[v1.0]





**NOTE**

Chased flashing is recommended at all vertical concrete junction details. It is the building designer's responsibility to check with applicable local building authorities as to whether this is required

## PRECAST CONCRETE WALL JUNCTION OP 2

Detail Number \_\_\_\_\_  
Version \_\_\_\_\_ 8.1  
[v1.0]



MATERIALS • SYSTEMS • SOLUTIONS