

## TYPICAL DETAILS

### CONTENTS

- 1.0 TYPICAL VERTICAL JOINT ON RAB
- 1.1 TYPICAL VERTICAL JOINT ON BUILDING PAPER
- 2.0 TYPICAL HORIZONTAL JOINT ON RAB
- 2.1 TYPICAL HORIZONTAL JOINT ON BUILDING PAPER
- 3.1.0 HEAD DETAIL - FAIRVIEW RESIDENTIAL JOINERY
- 3.1.1 SILL DETAIL - FAIRVIEW RESIDENTIAL JOINERY
- 3.1.2 JAMB DETAIL - FAIRVIEW RESIDENTIAL JOINERY
- 3.2.0 HEAD DETAIL - FAIRVIEW COMMERCIAL JOINERY
- 3.2.1 SILL DETAIL - FAIRVIEW COMMERCIAL JOINERY
- 3.2.2 JAMB DETAIL - FAIRVIEW COMMERCIAL JOINERY
- 4.0 FASCIA DETAIL - SOFFIT BY OTHERS
- 4.2.0 FASCIA TO SOFFIT
- 4.3.0 DRIP EDGE DETAIL
- 4.3.1 OPEN FLUSH SOFFIT JOINT
- 5.0 BASE DETAIL 1
- 5.1 TYPICAL EYEBROW SILL DETAIL
- 5.2 TYPICAL UPSTAND DETAIL
- 5.3 INTER-STOREY JOINT
- 6.0.0 TYPICAL EXTERNAL CORNER
- 6.0.1 TYPICAL VERTICAL INTERNAL CORNER
- 6.1 FIBRE CEMENT VERTICAL INTERNAL CORNER
- 6.2 VERTICAL PROFILED METAL INTERNAL CORNER
- 6.3 HORIZONTAL PROFILED METAL INTERNAL CORNER
- 7.0 TYPICAL WALL TO SOFFIT JUNCTION 1
- 7.2.0 TYPICAL WALL TO RAKING SOFFIT JUNCTION 1
- 7.2.1 TYPICAL WALL TO RAKING SOFFIT JUNCTION 2
- 7.3 WALL TO SOFFIT JUNCTION & DOWNPIPE PENETRATION
- 8.0 PRECAST CONCRETE WALL JUNCTION 1
- 8.1 PRECAST CONCRETE WALL JUNCTION 2
- 9.0 VERTICAL PROFILED METAL JUNCTION

### NOTES

#### General notes:

1. Consider 'hatched' areas as outside of Symonite scope and indicative only.
2. All commercial detailing shows rigid air barrier (RAB) as is common practice.
3. All residential detailing shows building wrap as is common practice.

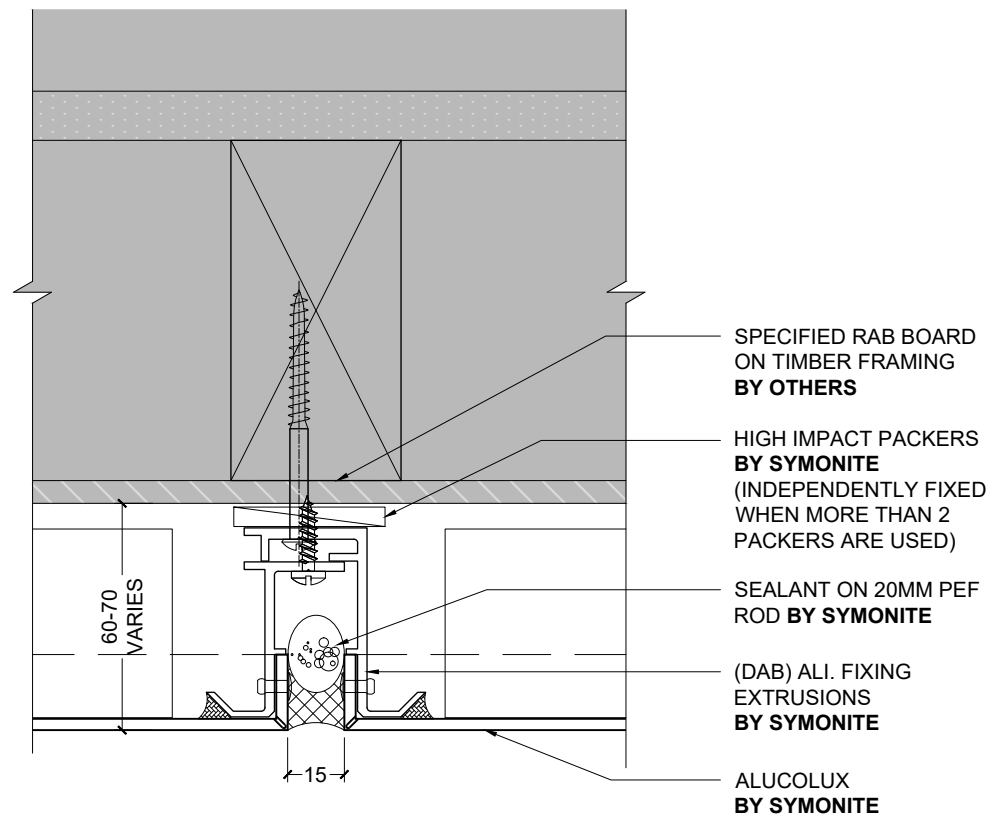
**Framing note:** Timber framing by others is to be at 600 centres max for both studs & nogs. This may be required at closer centers subject to engineering requirements.

**Rigid air barrier note:** As per Symonite BRANZ Appraisal #528 section 12.2 "A building with exposure to wind on any part of its facade above 1.55 kPa ULS must use a RAB as backing for the cavity". It is the building designers responsibility to determine wind loading on the building and incorporate RAB into the detailing as required to the specifications of the RAB manufacturer.

**Cavity Battens** are not required with the Symonite cladding system as a cavity is formed between the fixing angles and structure with high impact plastic packers ("H" packers). Minimum cavity depth is 40mm from structure to outer face of panel although experience shows the cavity is normally 50mm or more. Any instance where cavity is pushed beyond 60mm may require the installation of 20mm cavity battens by others.

# SYMONITE ALUCOLUX CLADDING (DAB) SYSTEM

**SYMONITE**



1 TYPICAL VERTICAL JOINT ON RAB (PLAN)  
- 1:2 @ A4

NOTE: TIMBER FRAMING BY OTHERS TO BE AT 600  
CTRS MAX FOR BOTH STUDS & NOGS. MAY BE  
REQUIRED AT CLOSER CENTERS SUBJECT TO  
ENGINEERING REQUIREMENTS

# SYMONITE

60-70 VARIES

15

HIGH IMPACT PACKERS  
**BY SYMONITE**  
(INDEPENDENTLY FIXED  
WHEN MORE THAN 2  
PACKERS ARE USED)

90mm WIDE 0.9mm  
ALI. UNDERTRAY  
**BY SYMONITE**

BUILDING PAPER ON  
TIMBER FRAMING  
**BY OTHERS**

SEALANT ON 20MM PEF  
ROD **BY SYMONITE**

(DAB) ALI. FIXING  
EXTRUSIONS  
**BY SYMONITE**

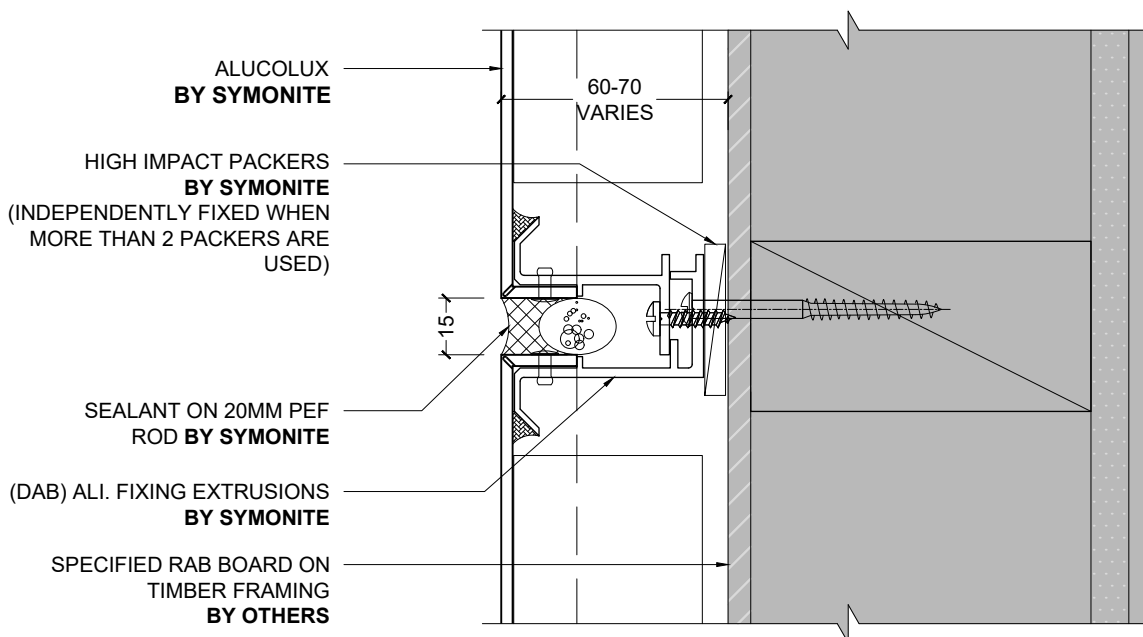
ALUCOLUX  
**BY SYMONITE**

1 TYPICAL VERTICAL JOINT ON BUILDING PAPER (PLAN)  
- 1:2 @ A4

NOTE: TIMBER FRAMING BY OTHERS TO BE AT 600  
CTRS MAX FOR BOTH STUDS & NOGS. MAY BE  
REQUIRED AT CLOSER CENTERS SUBJECT TO  
ENGINEERING REQUIREMENTS

# SYMONITE ALUCOLUX CLADDING (DAB) SYSTEM

**SYMONITE**



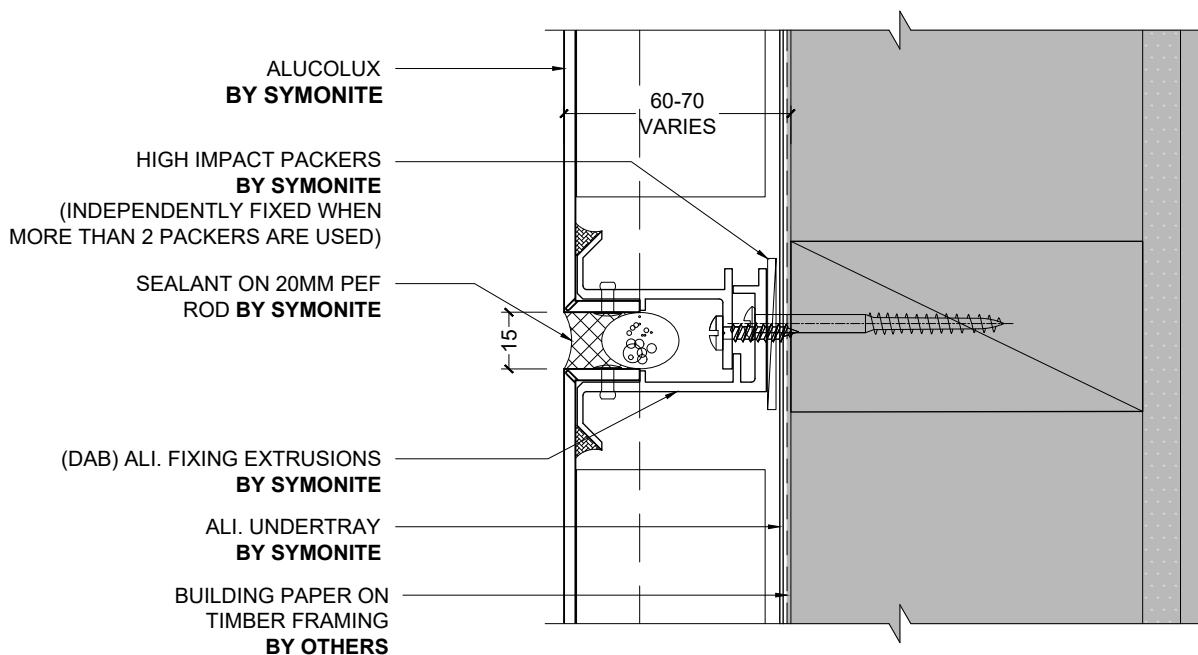
1 TYPICAL HORIZONTAL JOINT ON RAB (SECTION)  
- 1:2 @ A4

NOTE: TIMBER FRAMING BY OTHERS TO BE AT 600  
CTRS MAX FOR BOTH STUDS & NOGS. MAY BE  
REQUIRED AT CLOSER CENTERS SUBJECT TO  
ENGINEERING REQUIREMENTS

# SYMONITE ALUCOLUX CLADDING (DAB) SYSTEM

**SYMONITE**

NOTE: IF IT'S O PAPER IT SHOULD BE ROUT AND RETURN SYSTEM



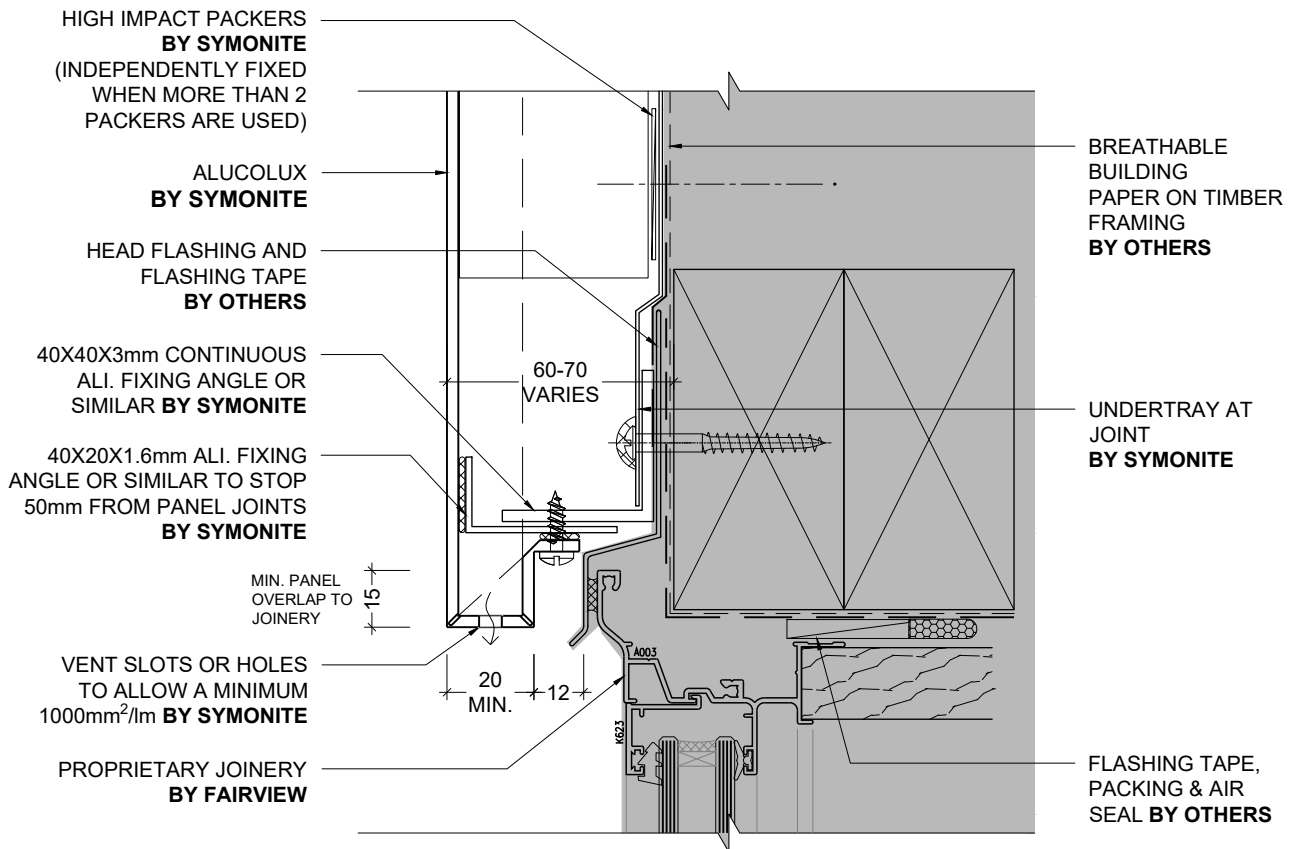
**TYPICAL HORIZONTAL JOINT ON BUILDING PAPER (SECTION DETAIL)**

1:2 @ A4

NOTE: TIMBER FRAMING BY OTHERS TO BE AT 600  
CTRS MAX FOR BOTH STUDS & NOGS. MAY BE  
REQUIRED AT CLOSER CENTERS SUBJECT TO  
ENGINEERING REQUIREMENTS

# SYMONITE ALUCOLUX CLADDING (DAB) SYSTEM

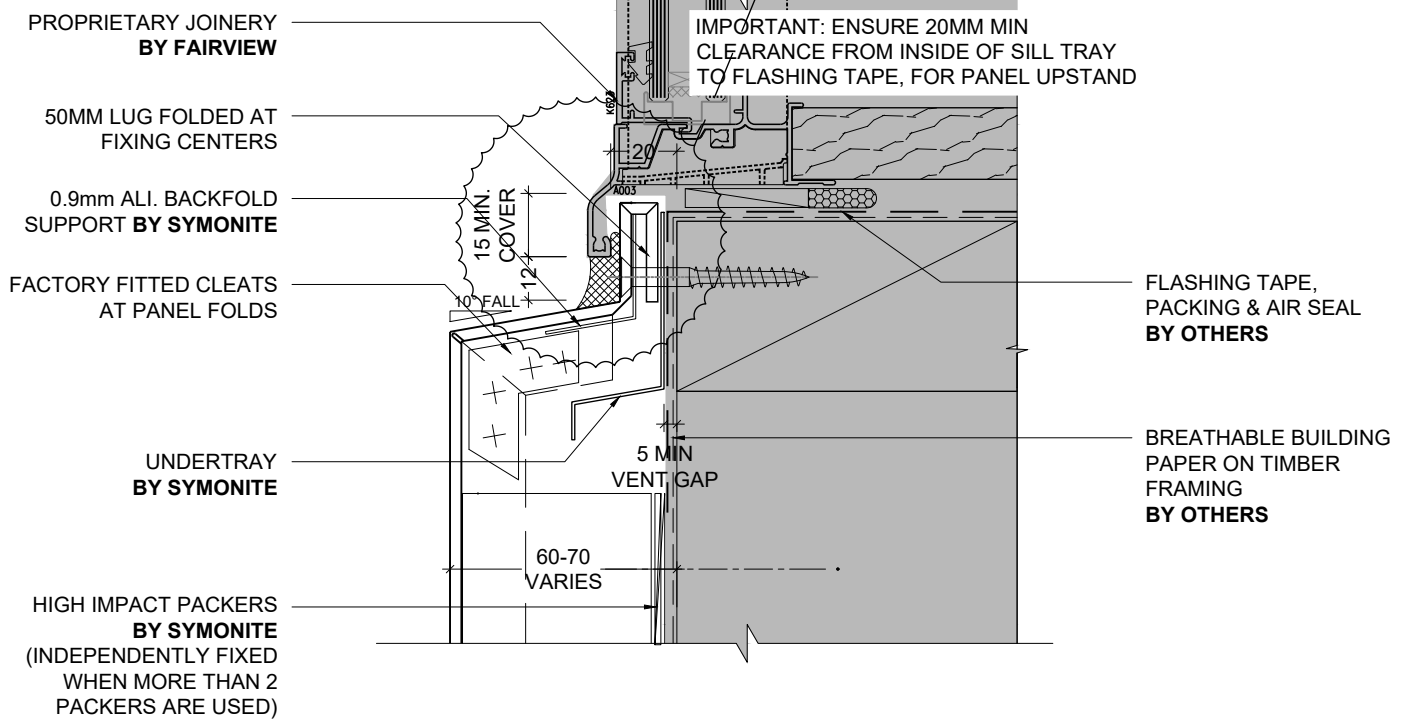
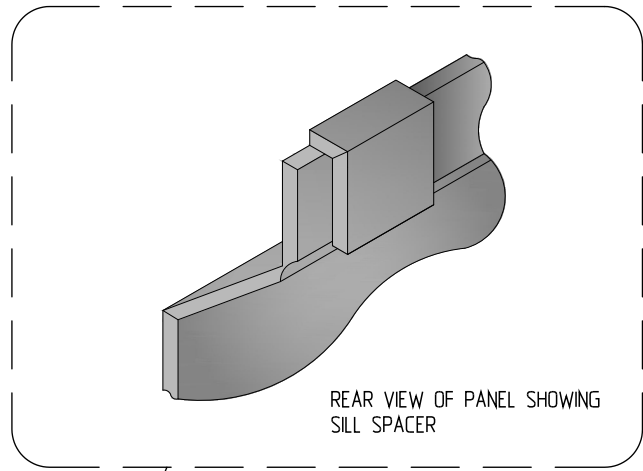
**SYMONITE**



1 HEAD DETAIL - FAIRVIEW RESIDENTIAL JOINERY (SECTION)  
 - 1:2 @ A4

# SYMONITE ALUCOLUX CLADDING (DAB) SYSTEM

**SYMONITE**

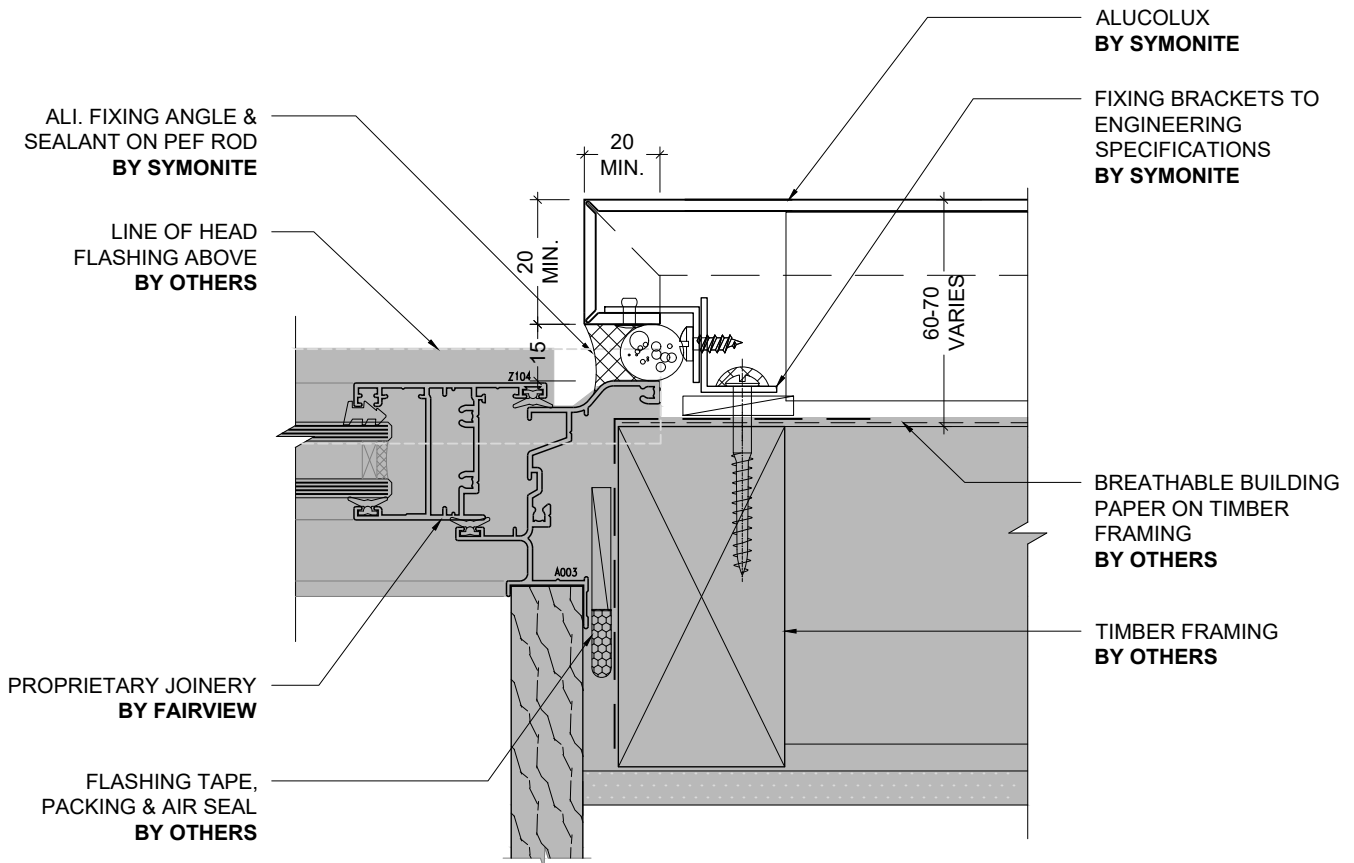


2 SILL DETAIL - FAIRVIEW RESIDENTIAL JOINERY (SECTION)  
- 1:2 @ A4



# SYMONITE ALUCOLUX CLADDING (DAB) SYSTEM

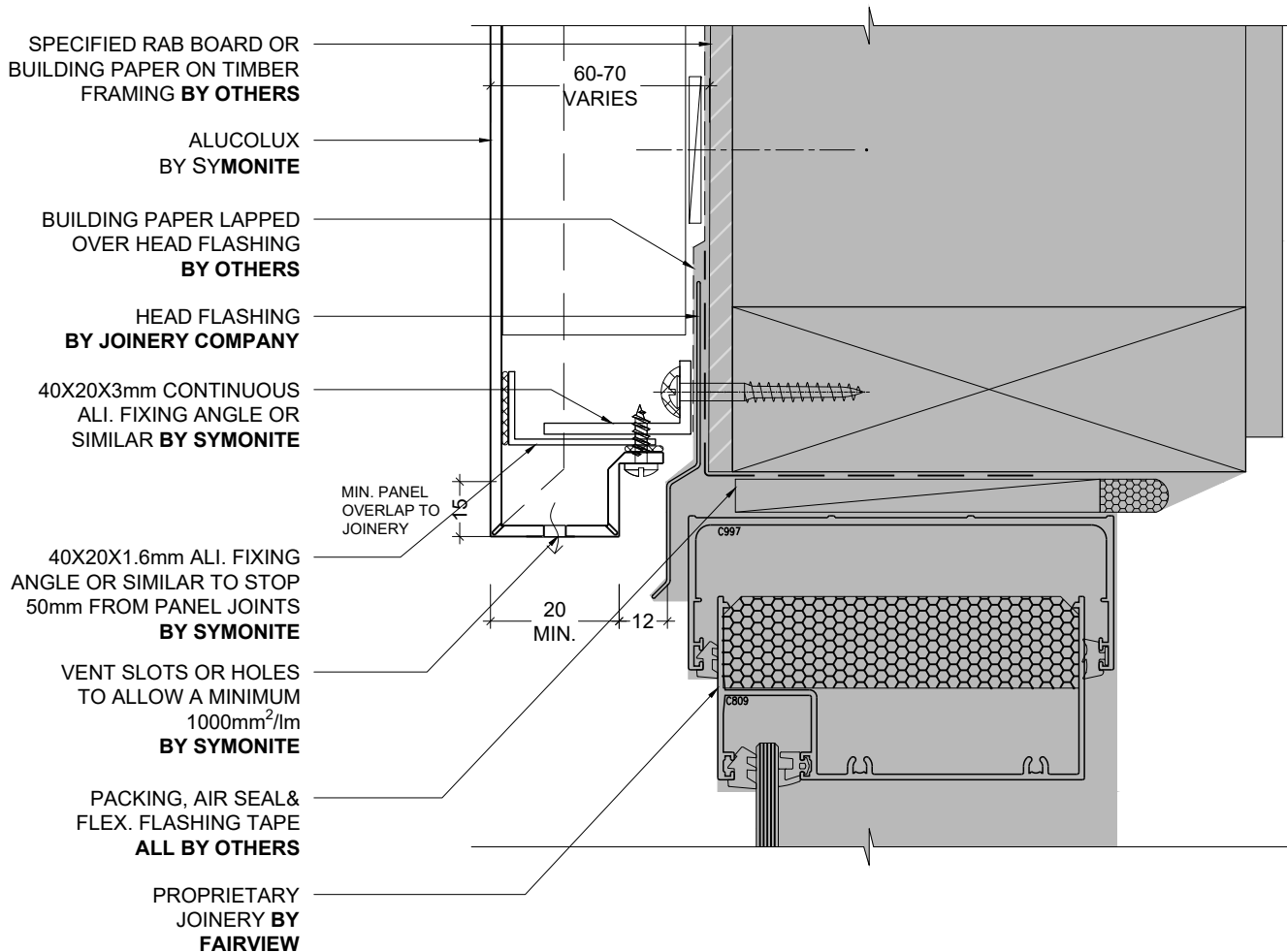
**SYMONITE**



1 JAMB DETAIL - FAIRVIEW RESIDENTIAL JOINERY (PLAN)  
- 1:2 @ A4

# SYMONITE ALUCOLUX CLADDING (DAB) SYSTEM

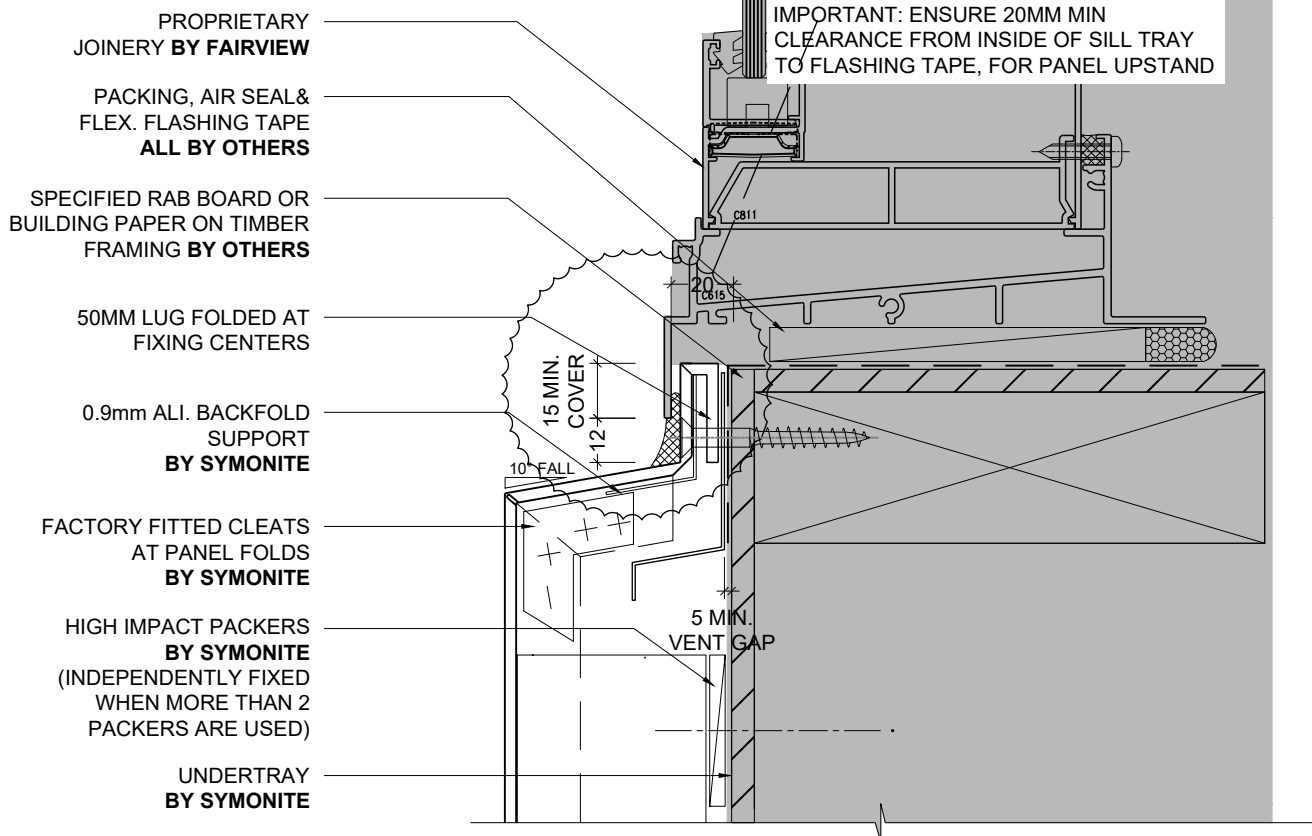
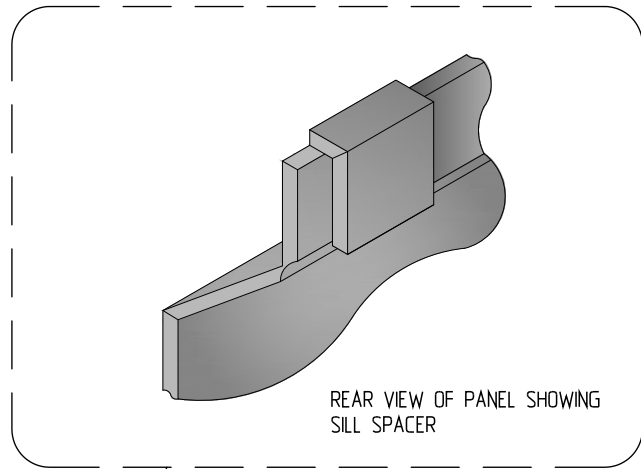
**SYMONITE**



1 TYPICAL FAIRVIEW COMMERCIAL HEAD DETAIL (SECTION)  
- 1:2 @ A4

# SYMONITE ALUCOLUX CLADDING (DAB) SYSTEM

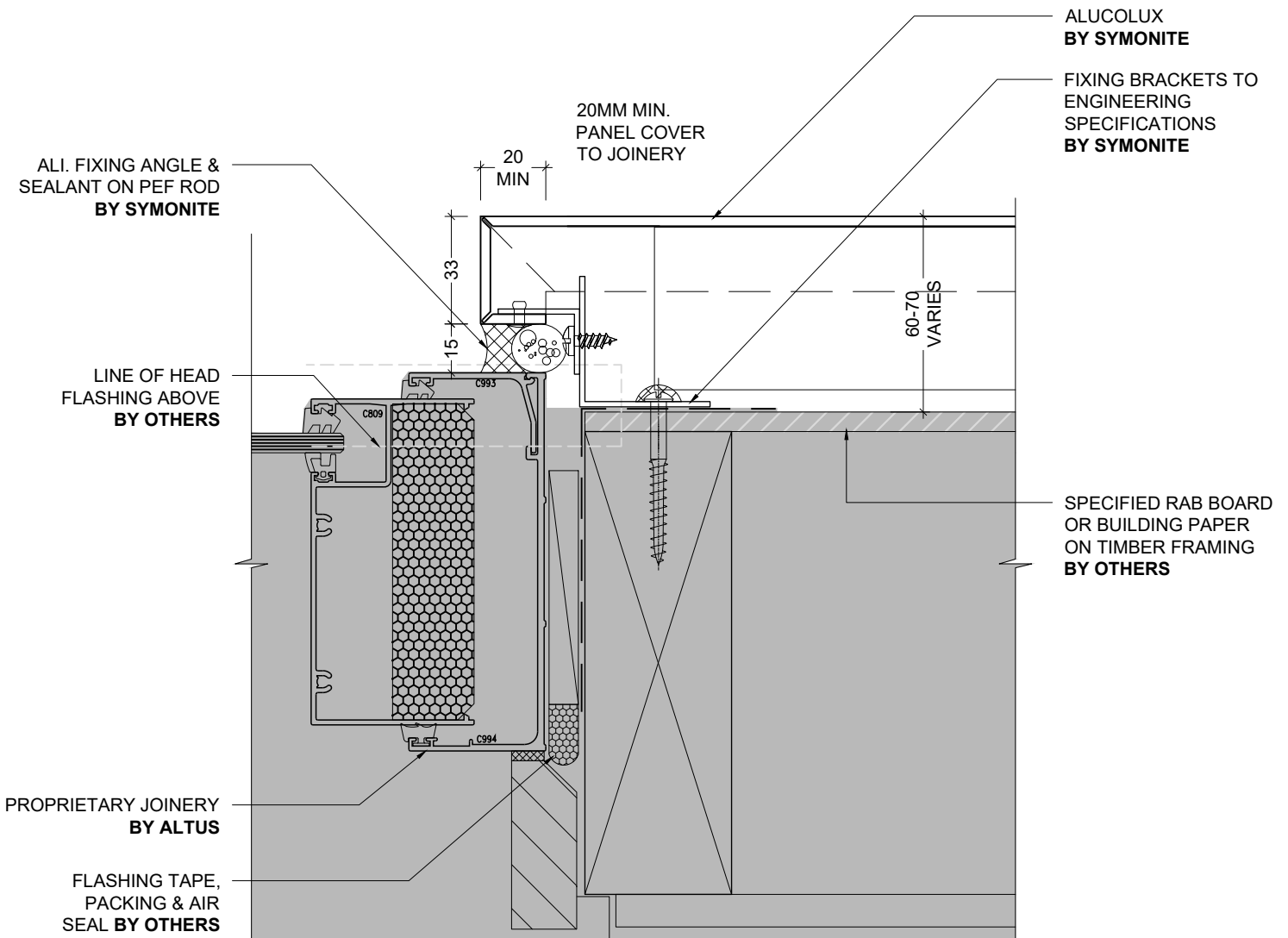
**SYMONITE**



2 TYPICAL FAIRVIEW COMMERCIAL SILL DETAIL (SECTION)  
1:2 @ A4

# SYMONITE ALUCOLUX CLADDING (DAB) SYSTEM

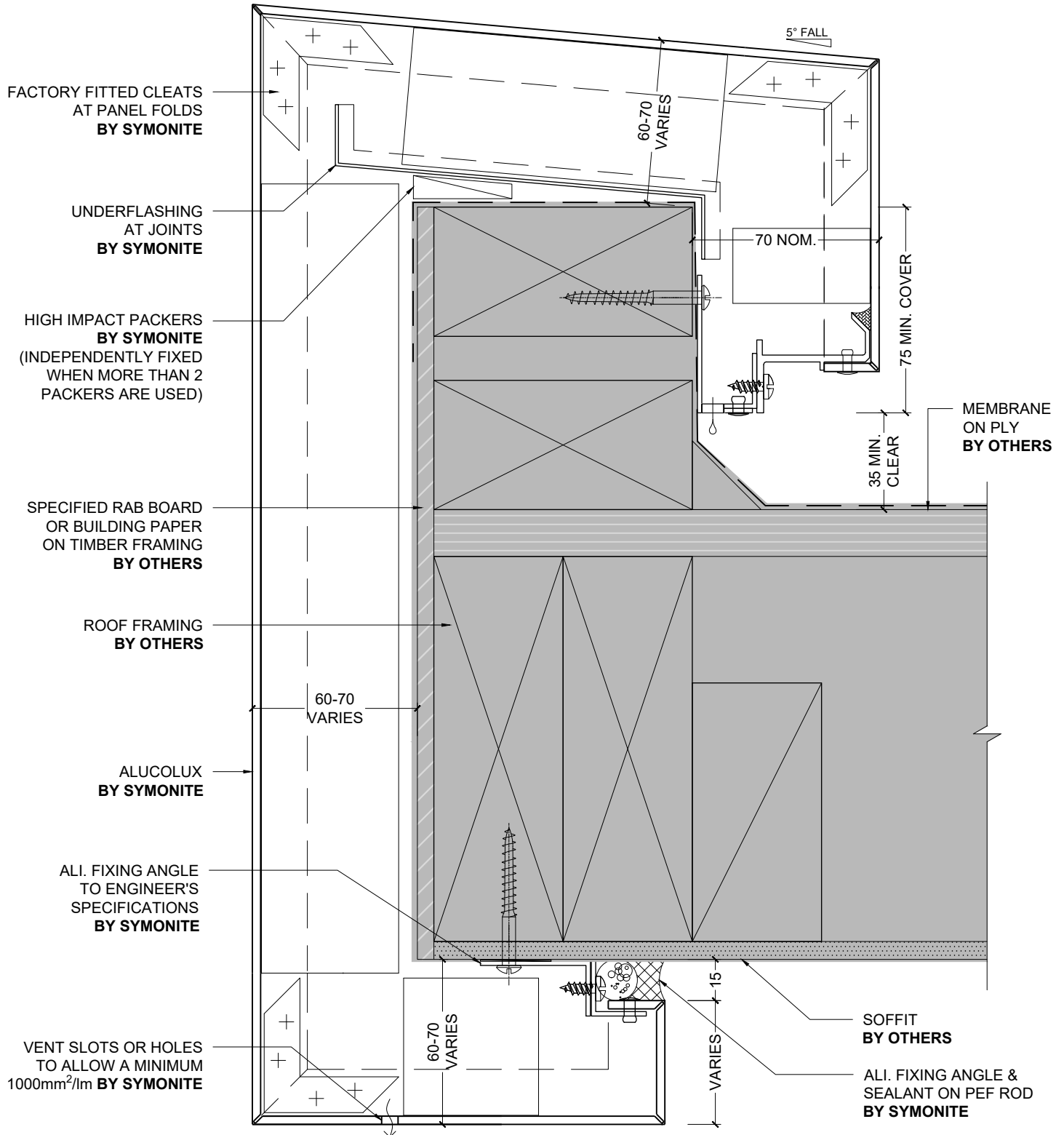
**SYMONITE**



1 TYPICAL FAIRVIEW COMMERCIAL JAMB DETAIL (PLAN)  
- 1:2 @ A4

# SYMONITE ALUCOLUX CLADDING (DAB) SYSTEM

**SYMONITE**

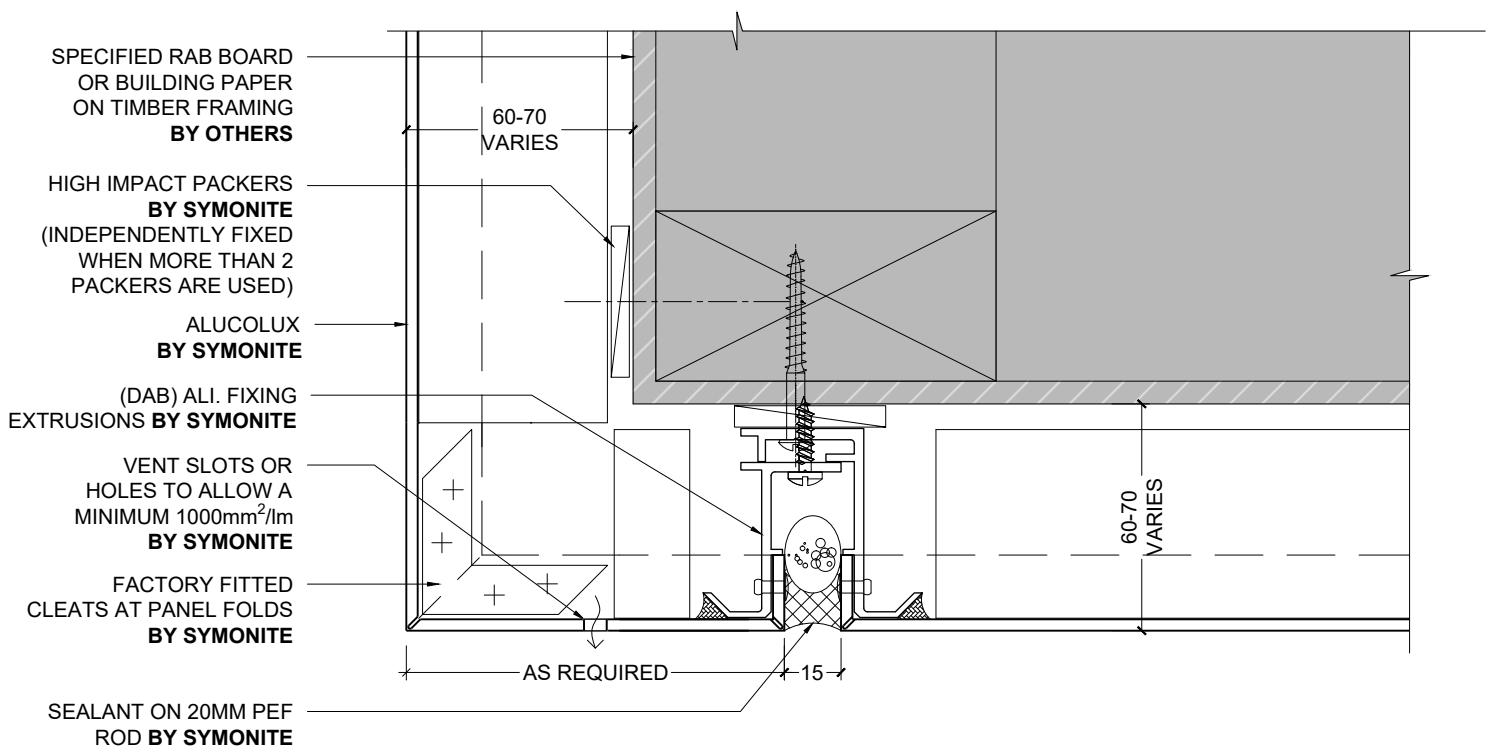


1 FASCIA DETAIL - SOFFIT BY OTHERS (SECTION)

1:2 @ A4

# SYMONITE ALUCOLUX CLADDING (DAB) SYSTEM

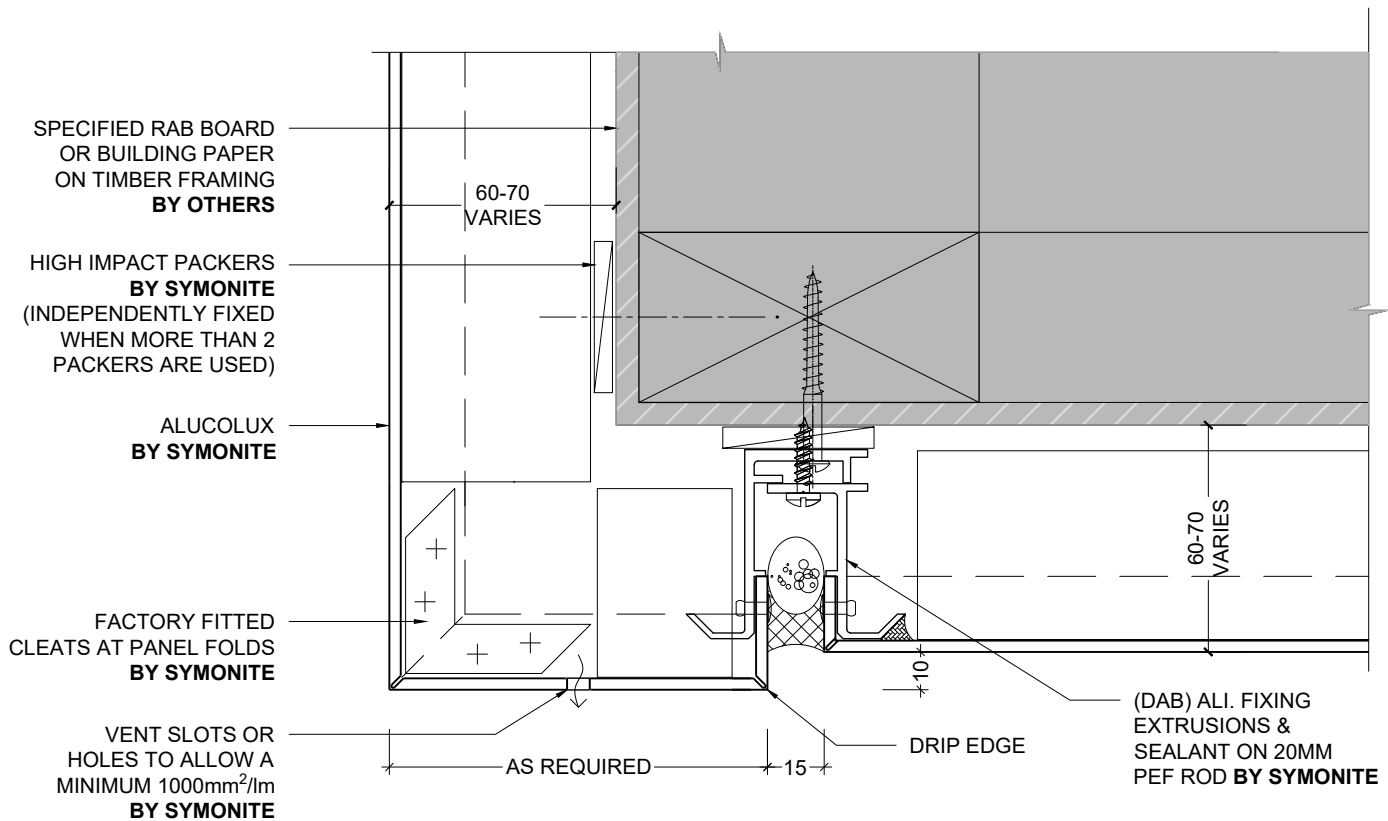
**SYMONITE**



1 **SOLID ALUMINIUM FASCIA TO SOFFIT 1 (SECTION)**  
- 1:2 @ A4

# SYMONITE ALUCOLUX CLADDING (DAB) SYSTEM

**SYMONITE**

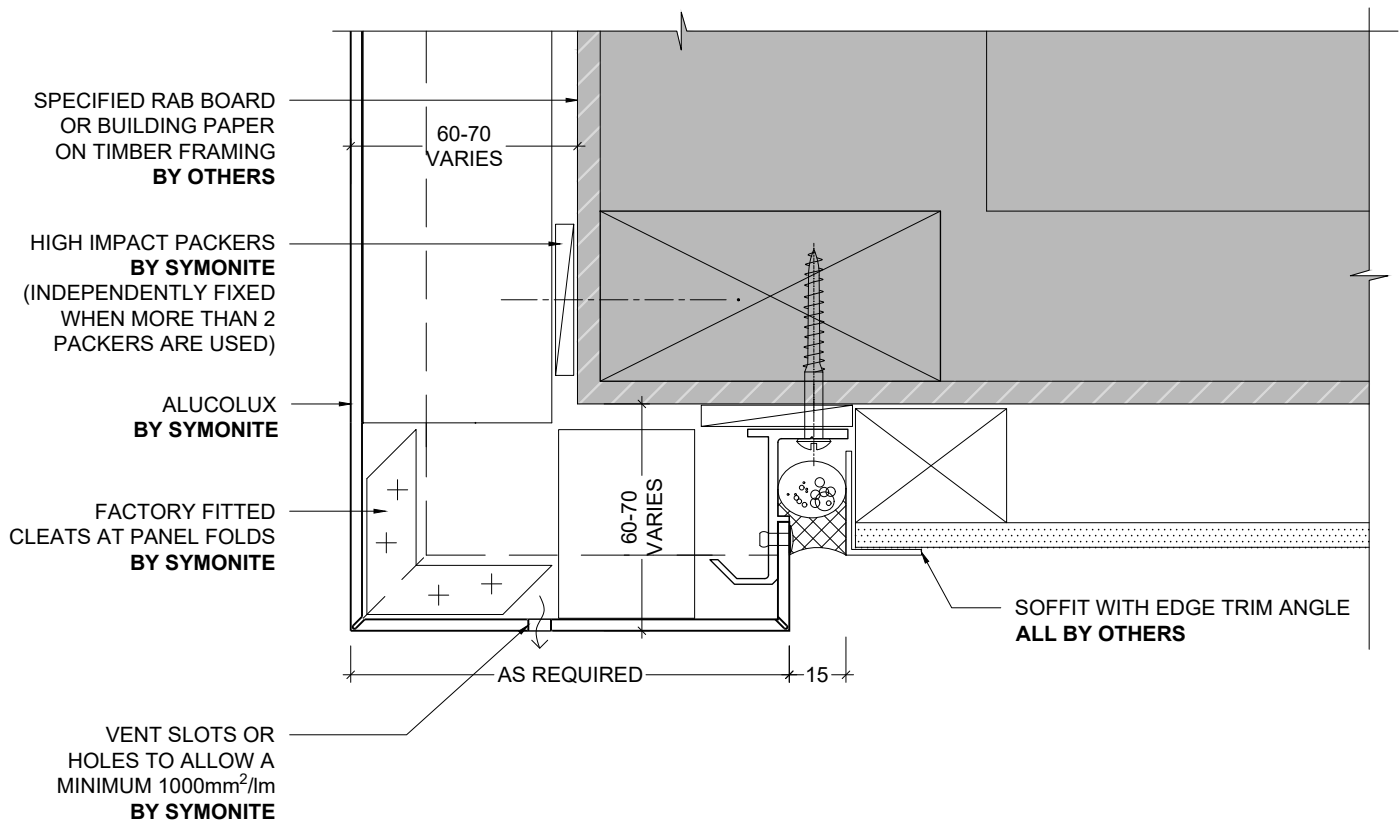


**DRIP EDGE DETAIL (SECTION)**

1:2 @ A4

# SYMONITE ALUCOLUX CLADDING (DAB) SYSTEM

**SYMONITE**

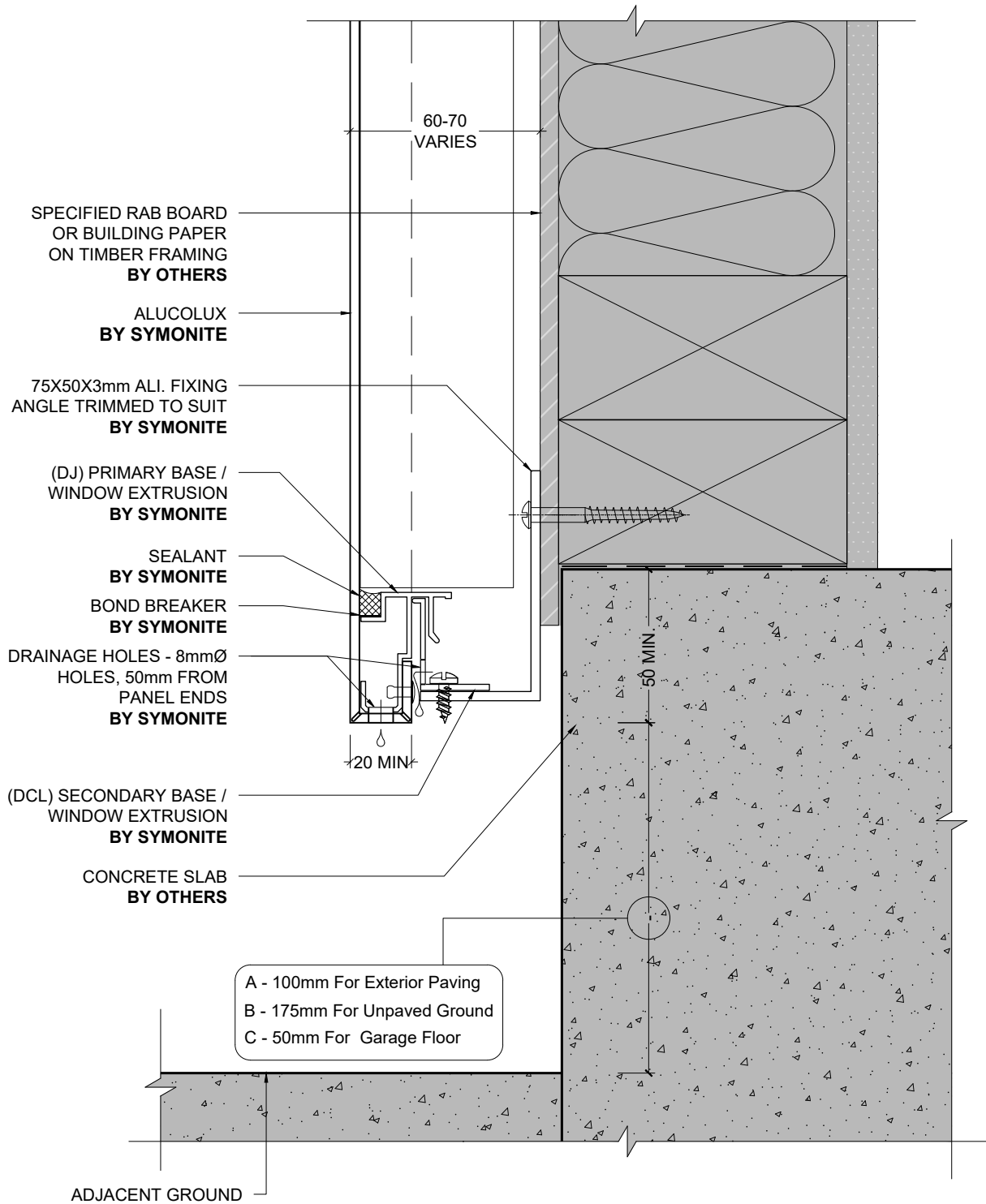


1 OPEN FLUSH SOFFIT JOINT (SECTION)  
- 1:2 @ A4



# SYMONITE ALUCOLUX CLADDING (DAB) SYSTEM

**SYMONITE**

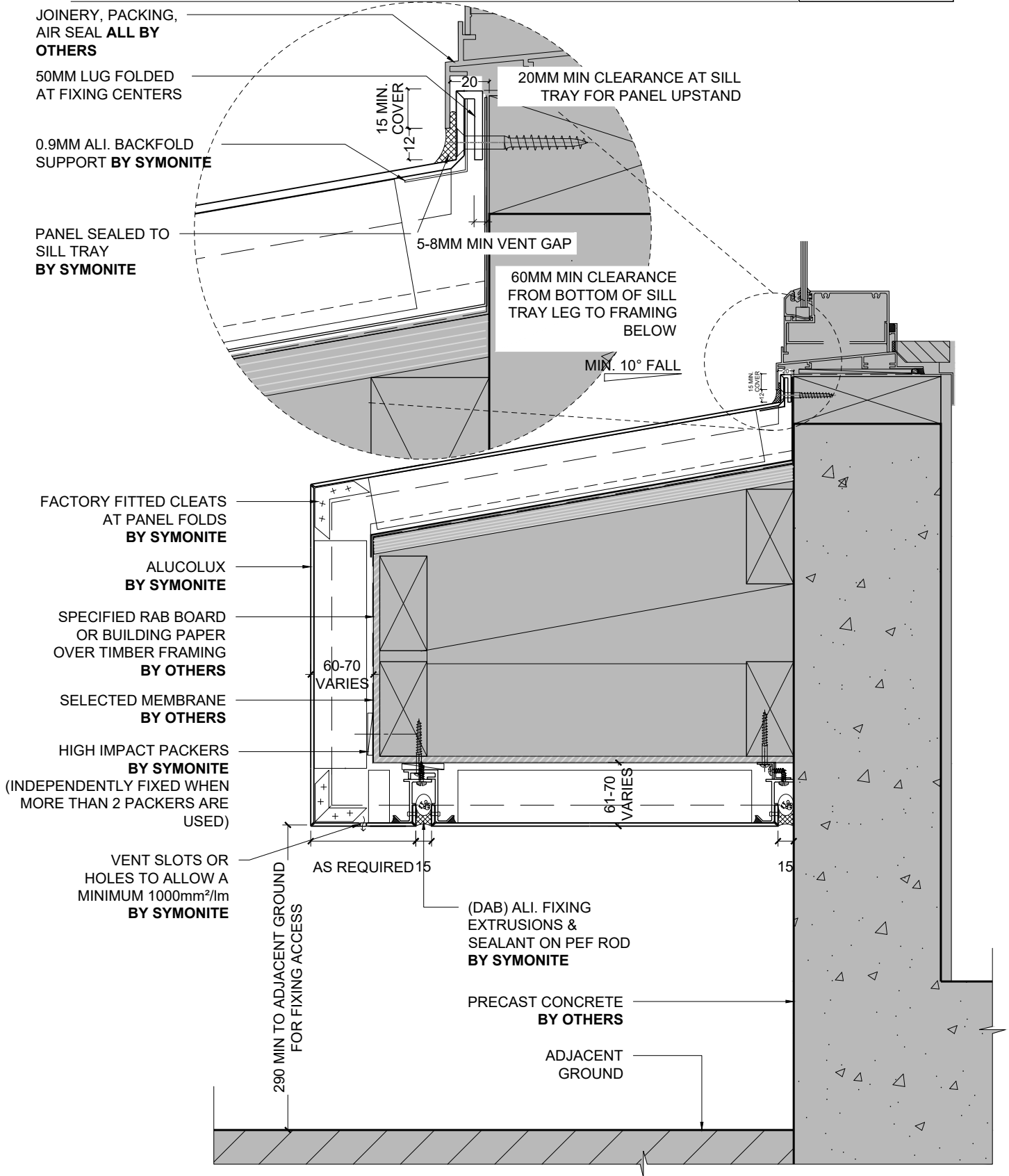


**BASE DETAIL 1 (SECTION)**

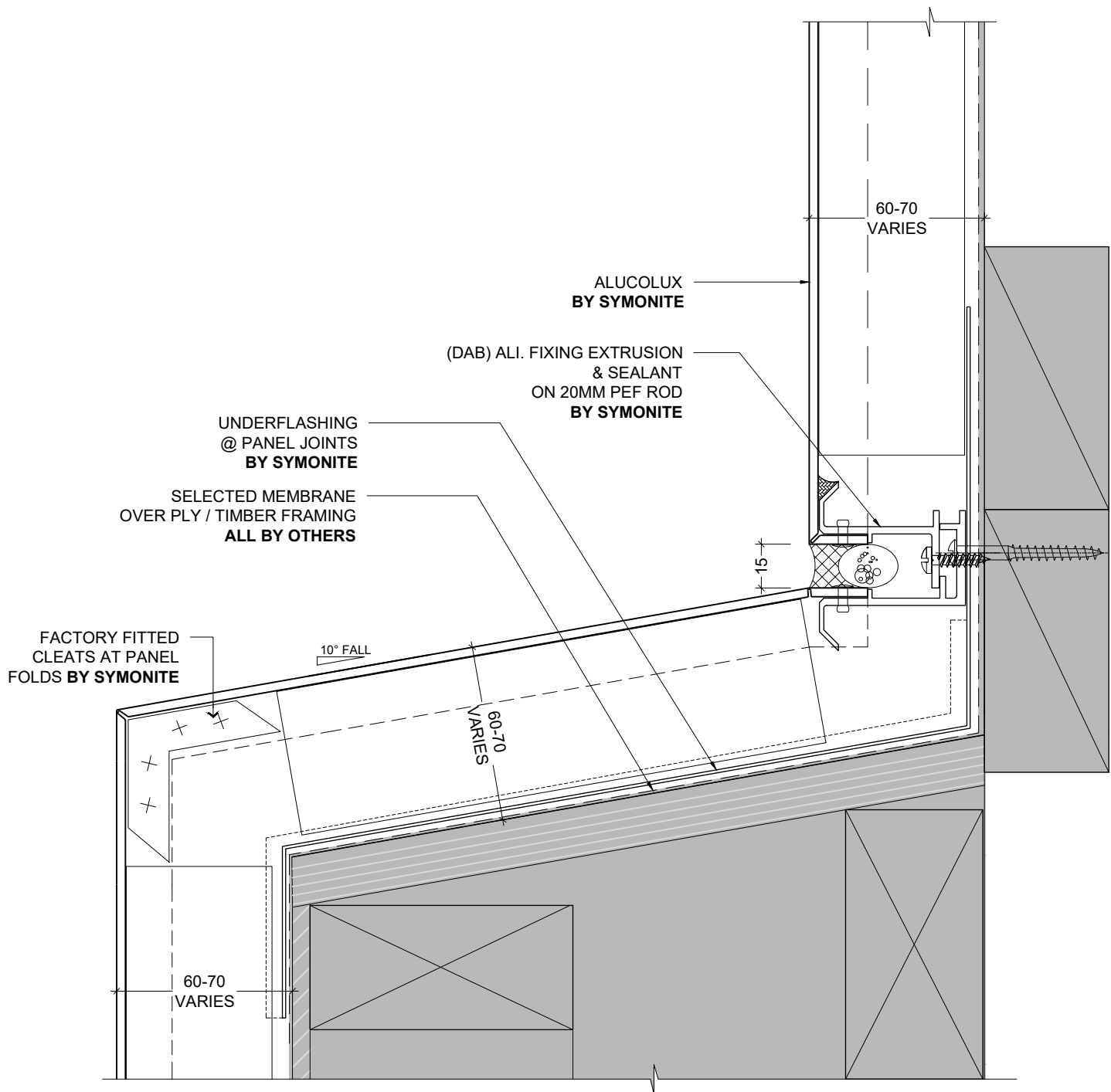
1:2 @ A4

# SYMONITE ALUCOLUX CLADDING SYSTEM

**SYMONITE**



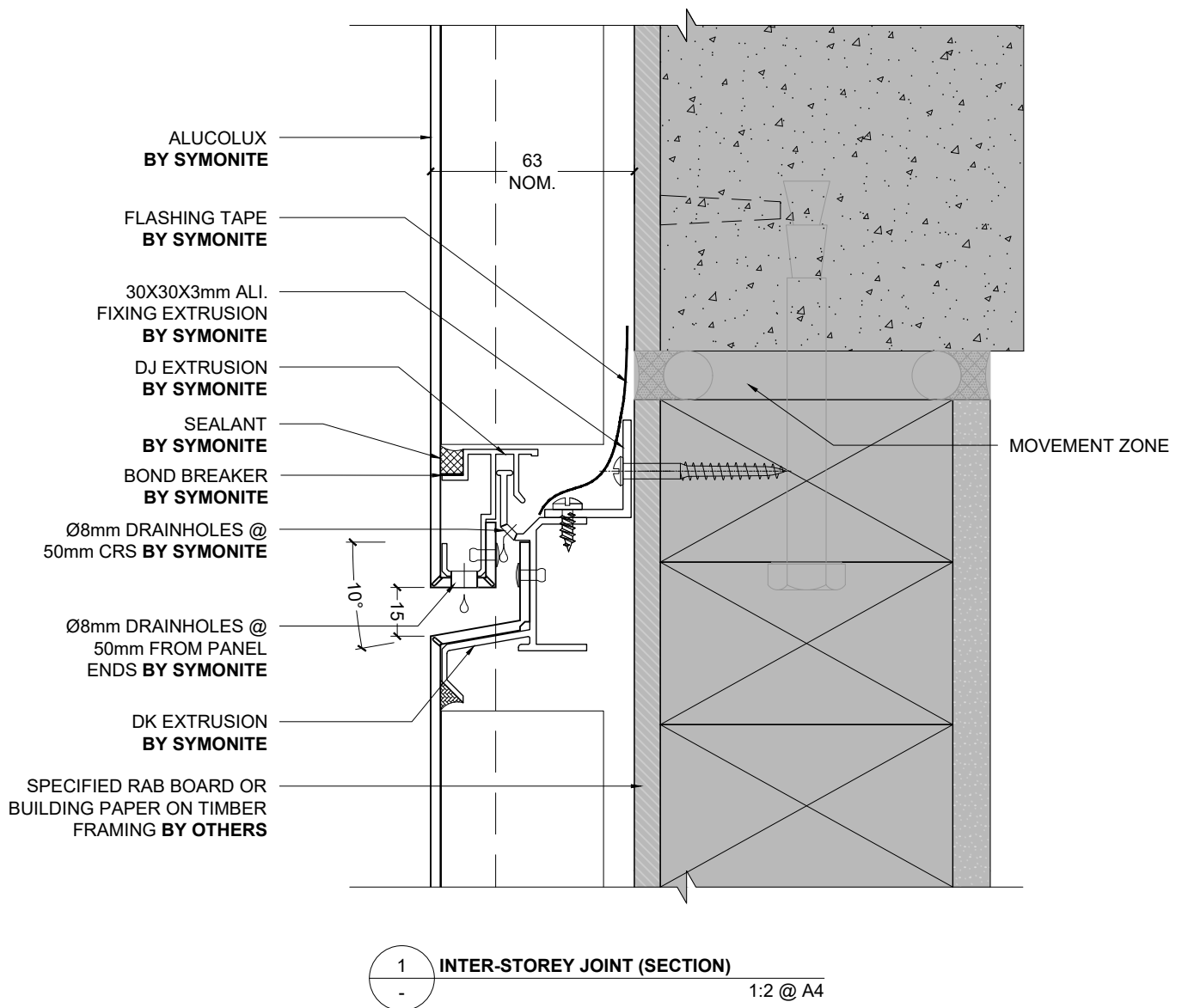
1 TYPICAL EYEBROW SILL DETAIL (SECTION)  
1:5 @ A4

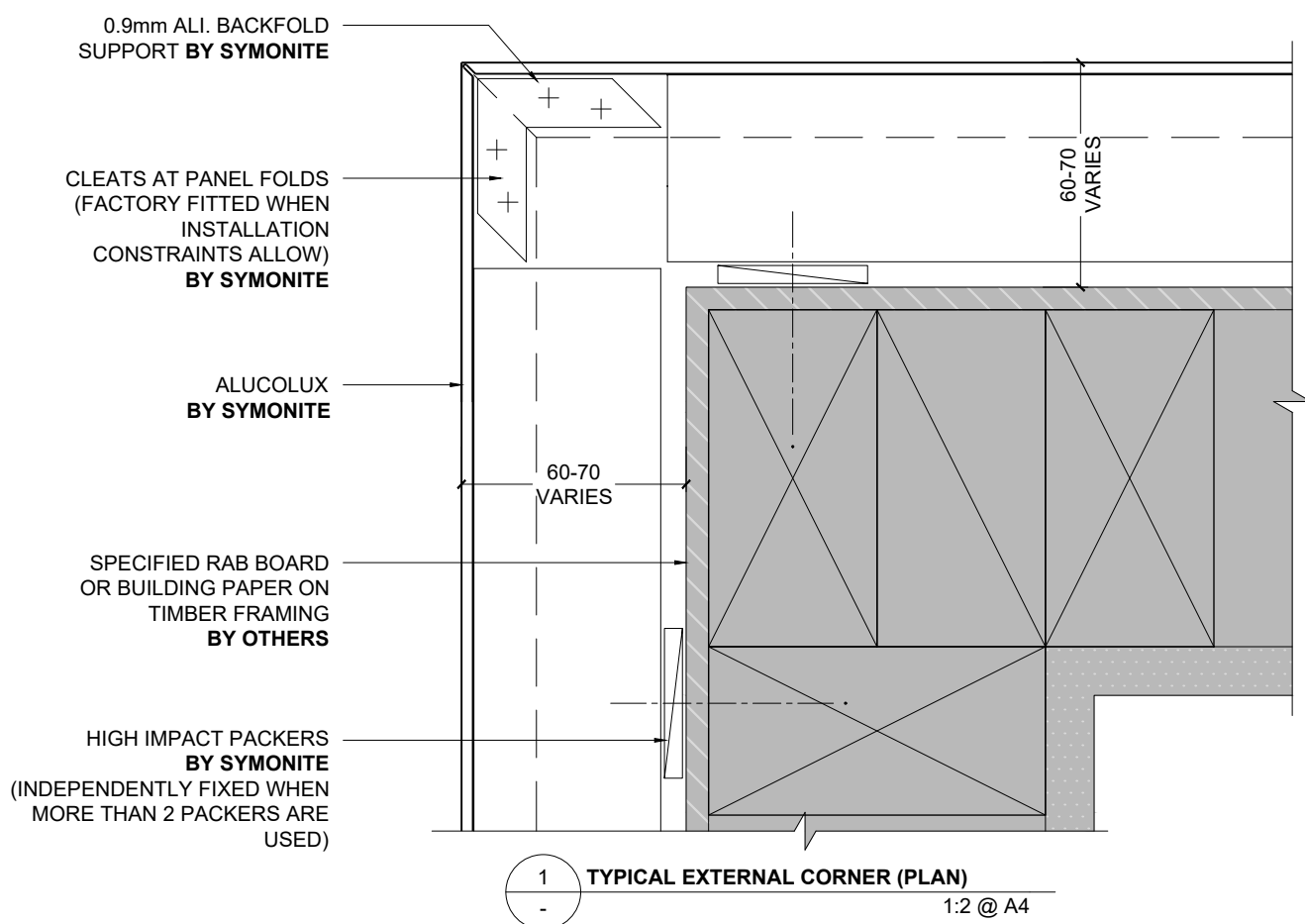


1 TYPICAL UPSTAND DETAIL (SECTION)  
- 1:2 @ A4

# SYMONITE ALUCOLUX CLADDING (DAB) SYSTEM

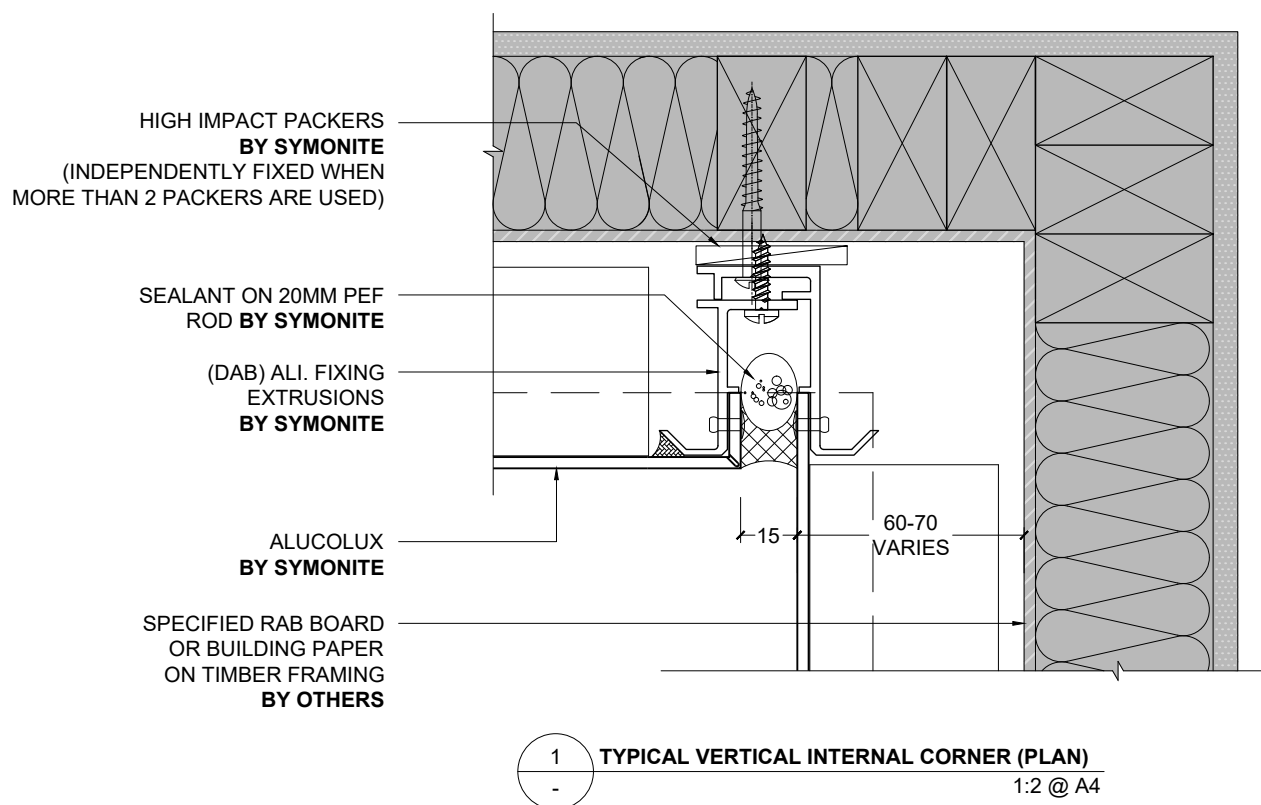
**SYMONITE**

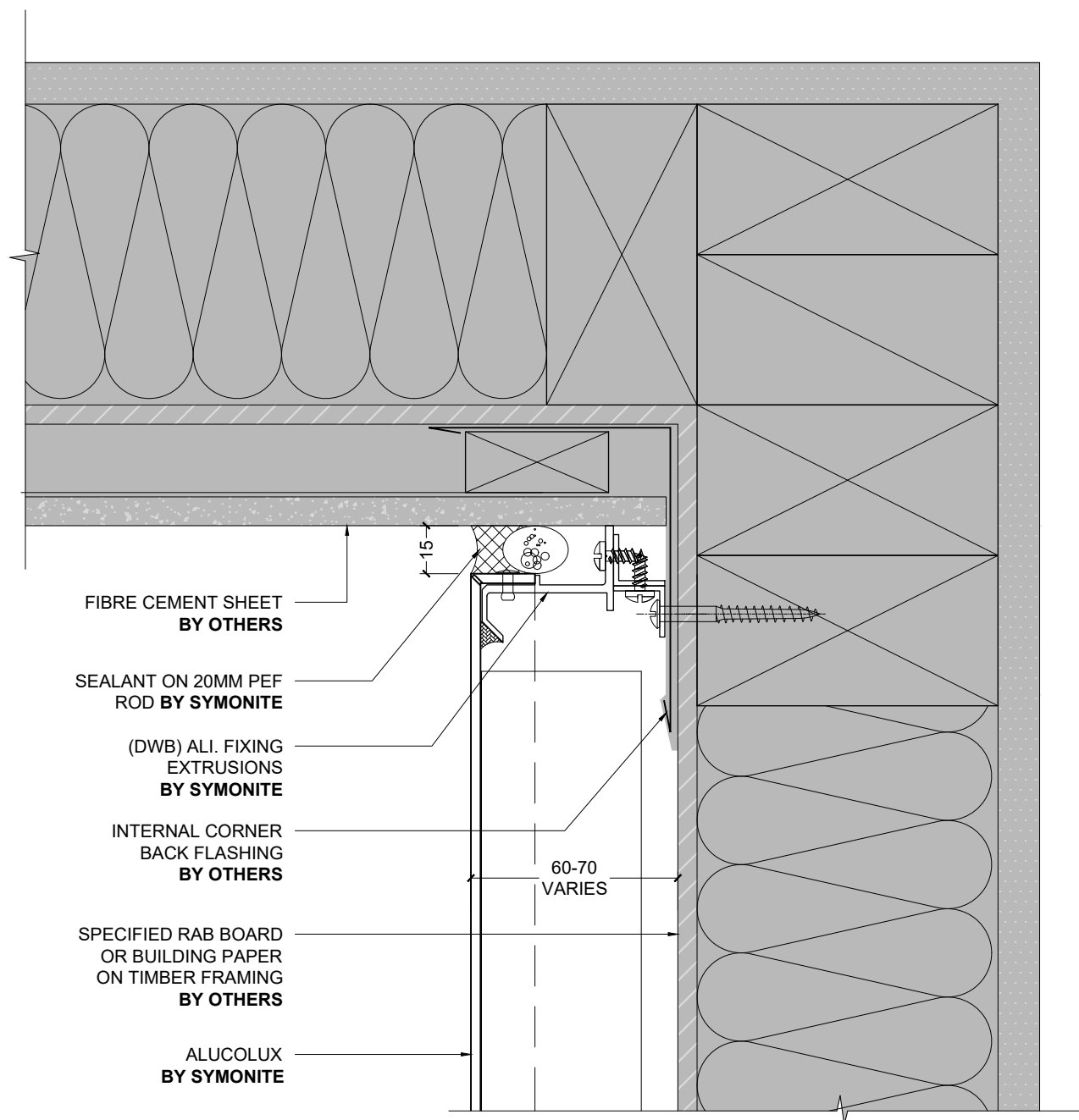




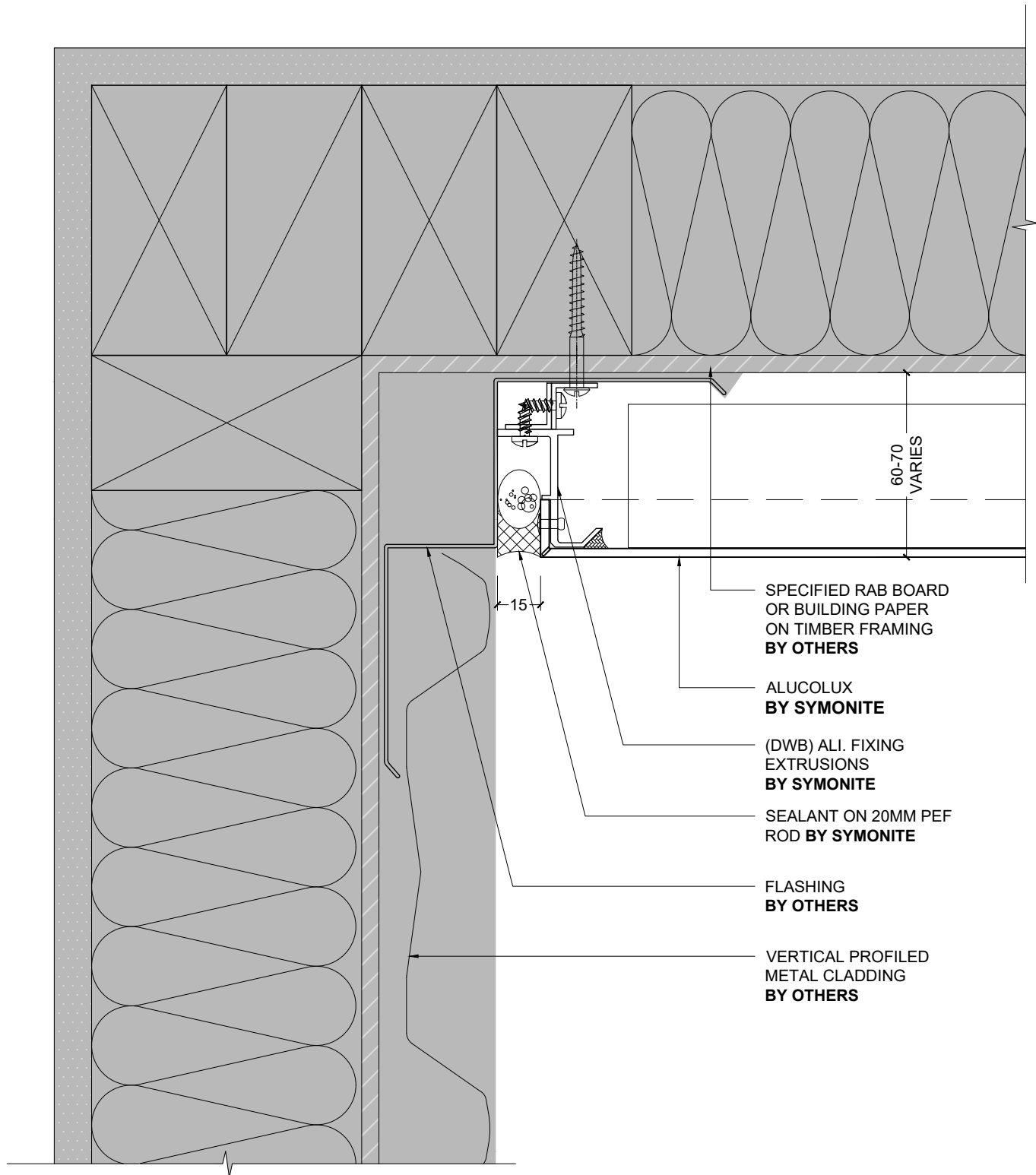
# SYMONITE ALUCOLUX CLADDING (DAB) SYSTEM

**SYMONITE**



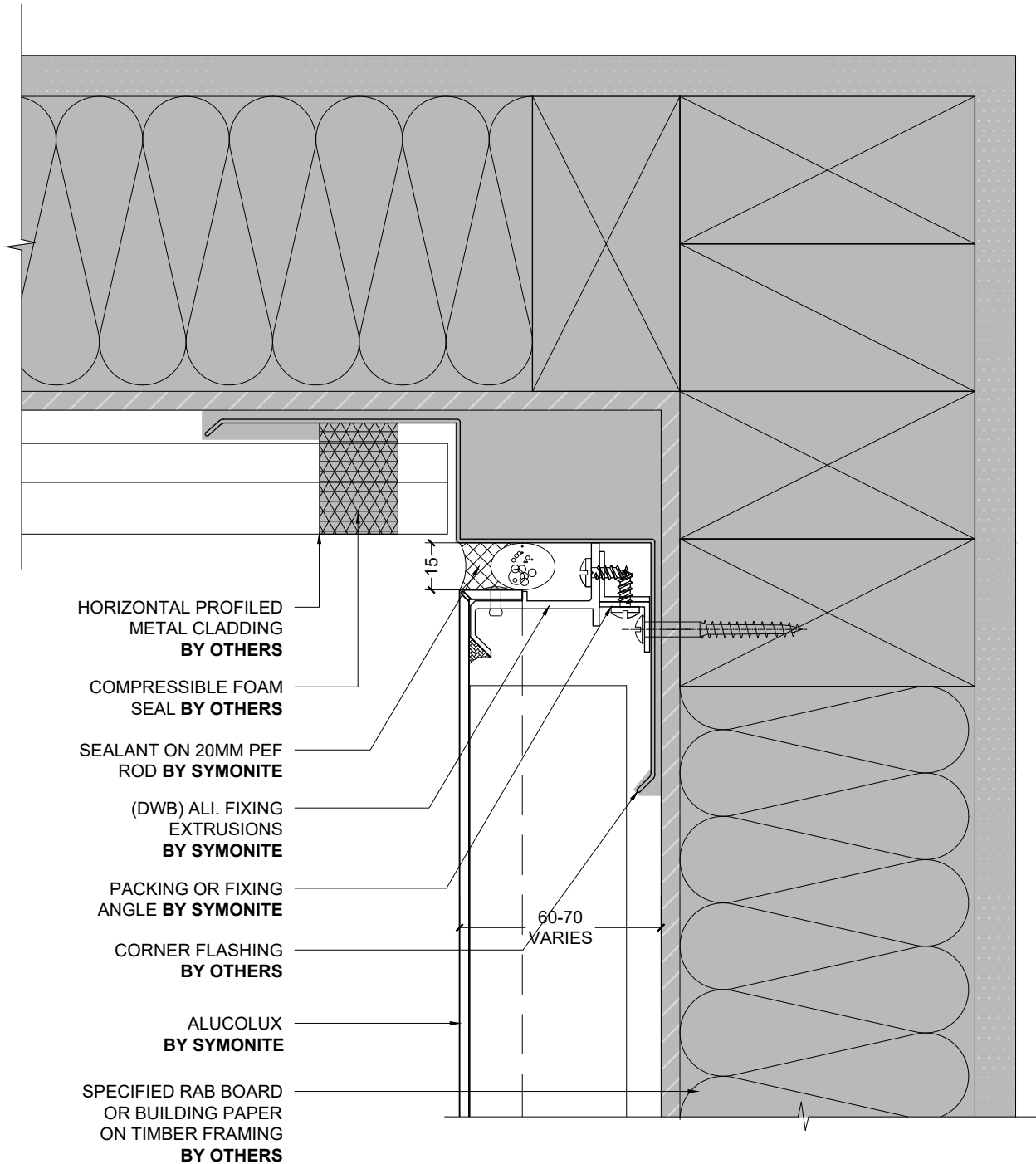


1 FIBRE CEMENT VERTICAL INTERNAL CORNER (PLAN)  
- 1:2 @ A4

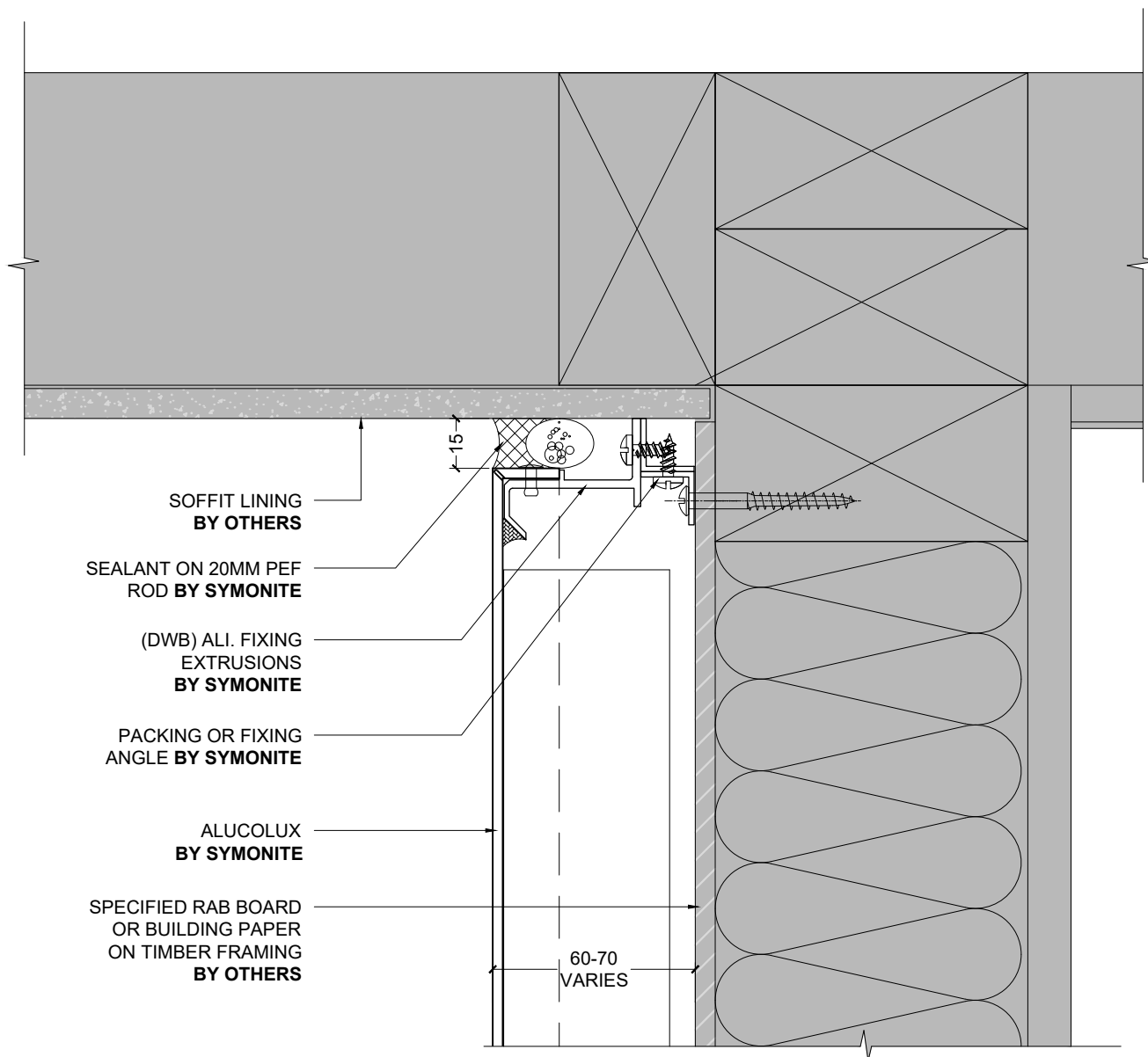


1 VERTICAL PROFILED METAL INTERNAL CORNER (PLAN)  
- 1:2 @ A4

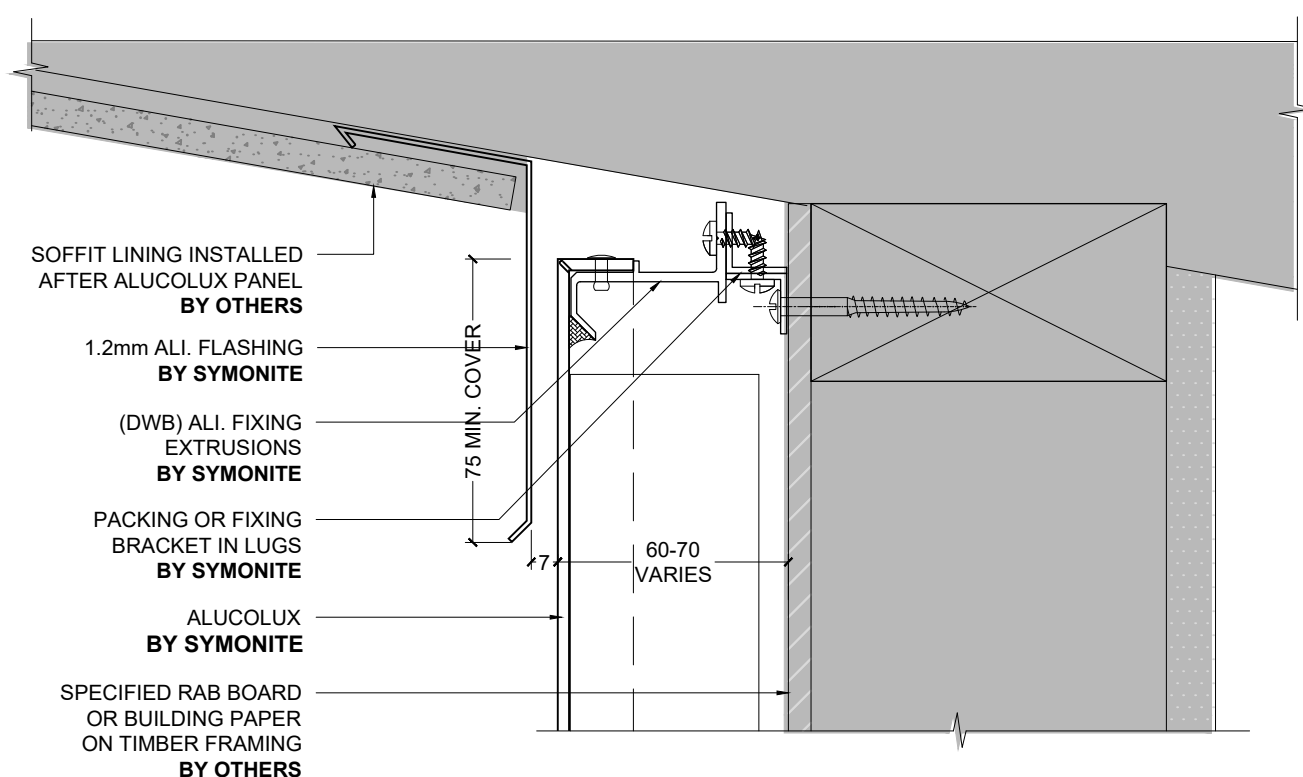




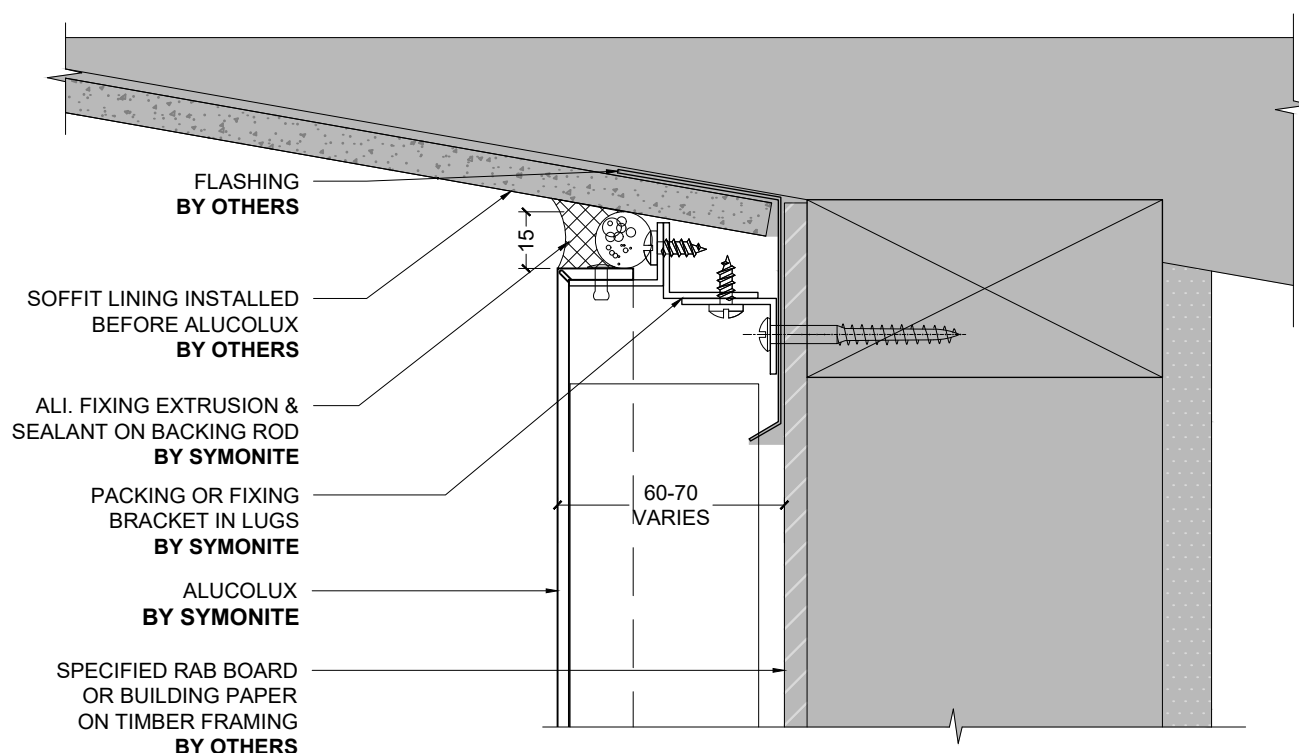
1 HORIZONTAL PROFILED METAL INTERNAL CORNER (PLAN)  
- 1:2 @ A4



1 TYPICAL WALL TO SOFFIT JUNCTION 1 (SECTION)  
- 1:2 @ A4



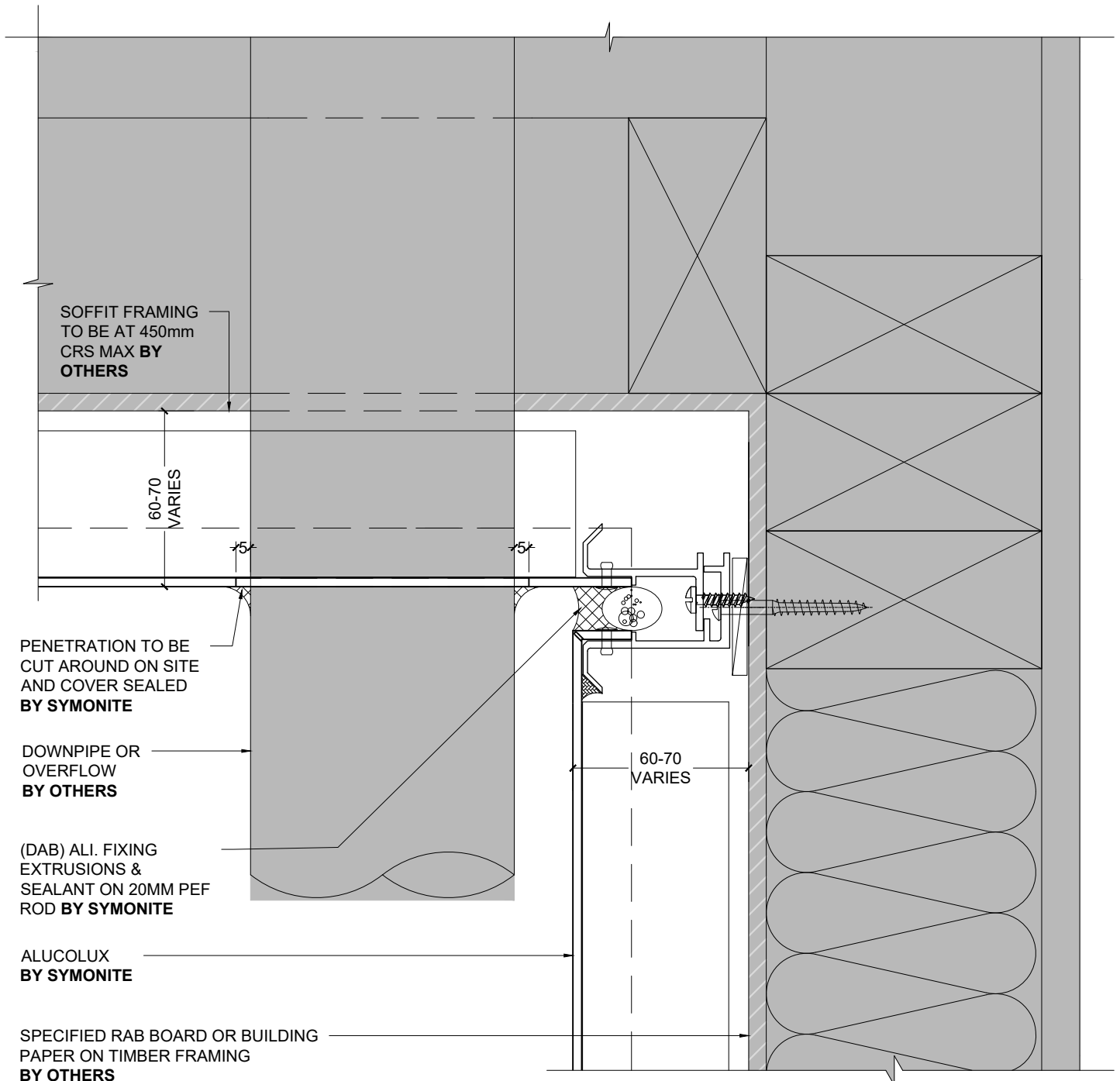
1 WALL TO RAKING SOFFIT JUNCTION 1 (SECTION)  
- FULL WEATHER EXPOSURE 1:2 @ A4



1 WALL TO RAKING SOFFIT JUNCTION 2 (SECTION)  
- INTERIOR OR LOW WEATHER EXPOSURE 1:2 @ A4

# SYMONITE ALUCOLUX CLADDING (DAB) SYSTEM

**SYMONITE**

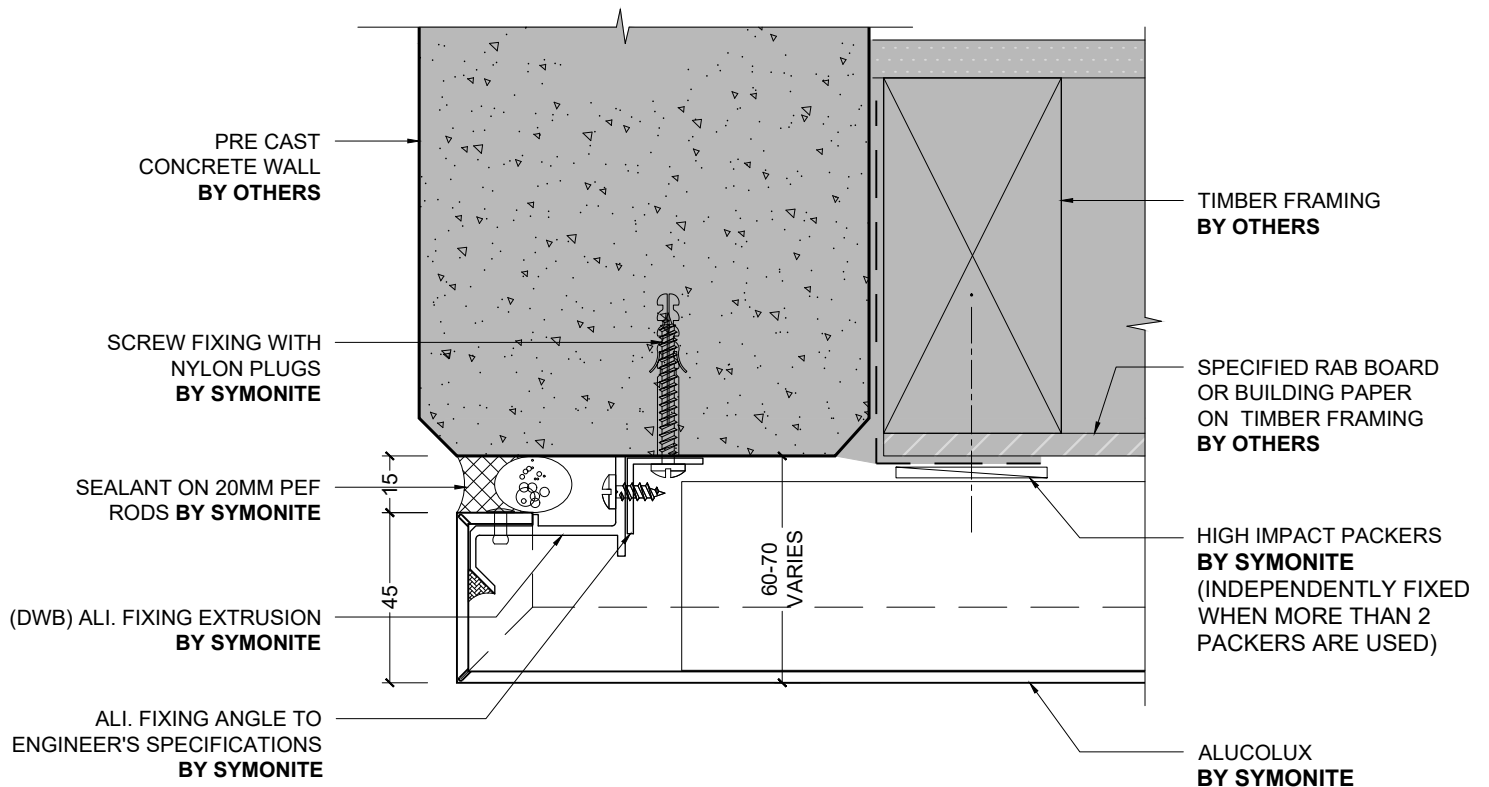


**WALL TO SOFFIT JUNCTION & DOWNPIPE PENETRATION (SECTION)**

1:2 @ A4

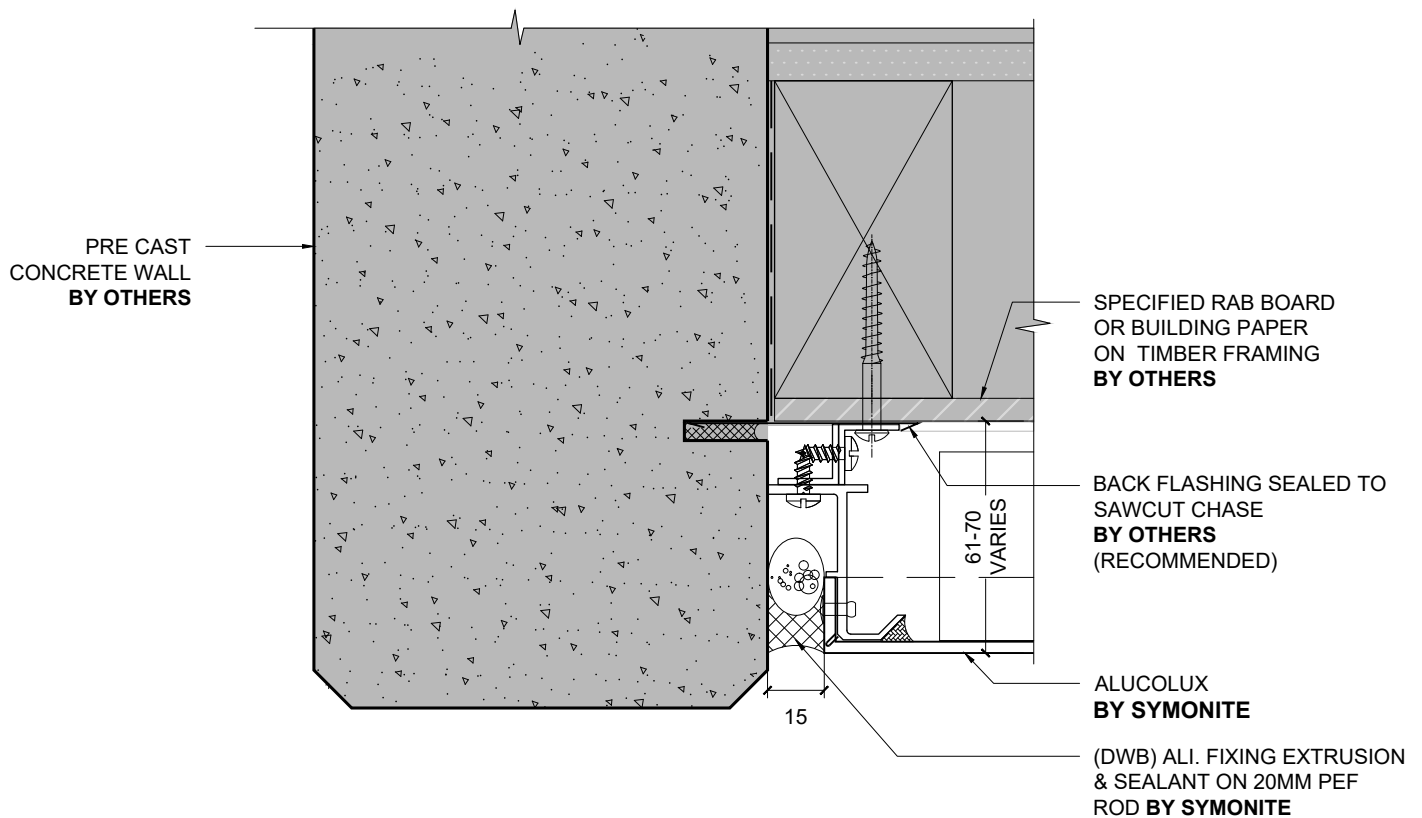
# SYMONITE ALUCOLUX CLADDING (DAB) SYSTEM

**SYMONITE**



1 PRECAST CONCRETE WALL JUNCTION 1 (PLAN)

1:2 @ A4

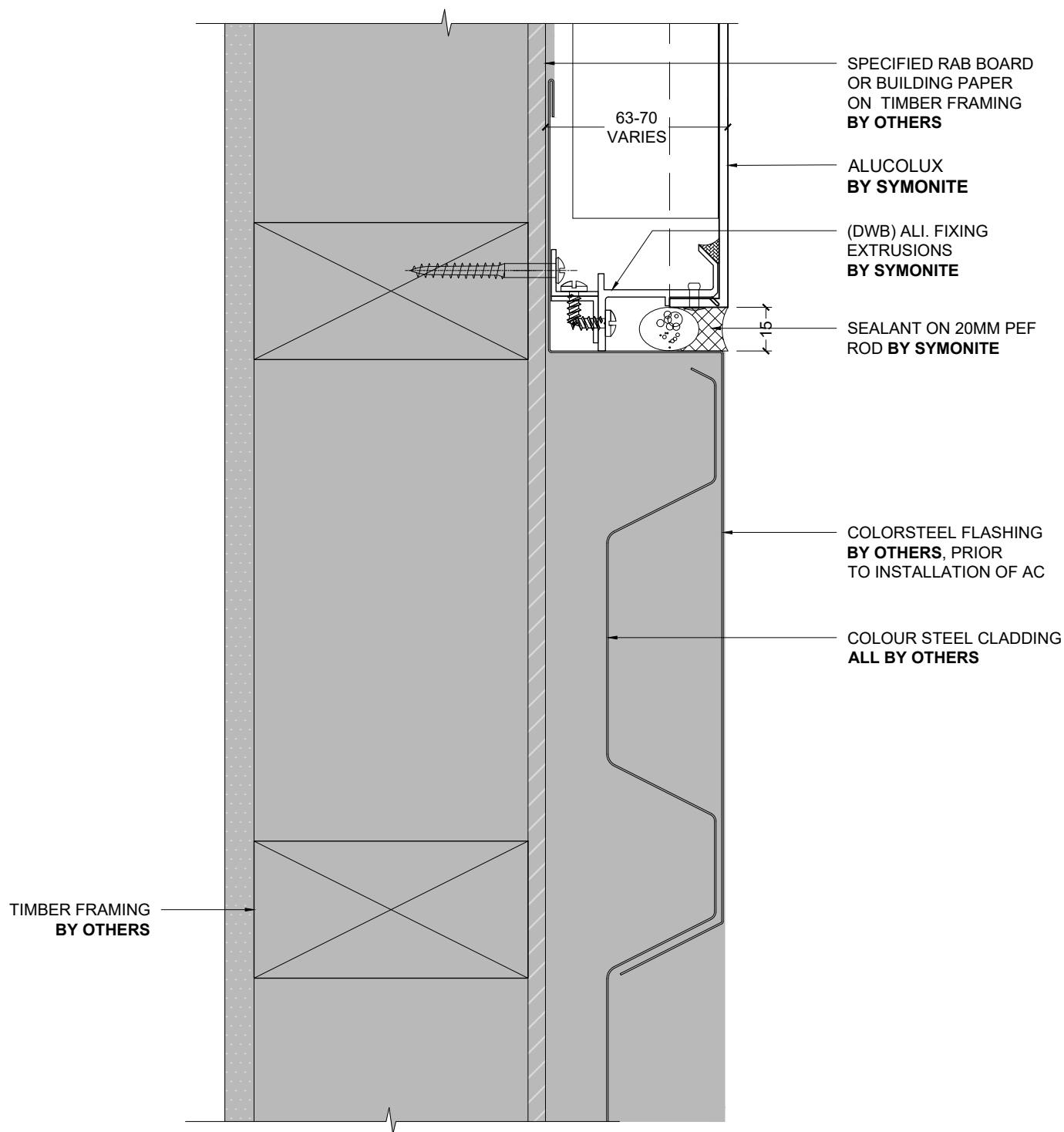


1 PRECAST CONCRETE WALL JUNCTION 2 (PLAN)  
1:2 @ A4

NOTE: CHASED FLASHING IS RECOMMENDED AT ALL VERTICAL CONCRETE JUNCTION DETAILS. IT IS THE BUILDING DESIGNER'S RESPONSIBILITY TO CHECK WITH APPLICABLE LOCAL BUILDING AUTHORITIES AS TO WHETHER THIS IS REQUIRED

# SYMONITE ALUCOLUX CLADDING (DAB) SYSTEM

**SYMONITE**



**VERTICAL PROFILED METAL JUNCTION (PLAN)**

1:2 @ A4