

## FRONTEK® CERAMIC TILES

frontek

### PURPOSE

SPS Building Ltd supplies Frontek® Ceramic Tiles to be used as an external wall cladding.

### EXPLANATION

Frontek® Ceramic Tiles are extruded, hollow, vitrified ceramic tiles for use in a ventilated façade system. The tiles are fixed using a proprietary system comprising stainless steel clips, fixed to extruded aluminum horizontal guides.

The tiles, Superplus, Omega Superplus, Plus and Omega Plus, are available in a range of colours and textures.

Frontek® Ceramic Tiles are available in the following sizes:

- › Thickness (mm): 1.9
- › Width (cm): 24.7, 40.5, 49.7, 60
- › Length (cm): 80, 100, 160.

### SCOPE AND LIMITATIONS OF USE

Scope	Limitations
<b>Location</b> Up to and including extra high wind zone as defined in NZS 3604:2011 or a calculated design wind pressure (ULS) of 2.5 kPa. In all exposure zones as defined by NZS 3604:2011.	<ul style="list-style-type: none"> <li>› All fixings to comply with E2/AS1 (table 20 and 21) for the appropriate exposure zone as defined in NZS 3604:2011, section 4.</li> <li>› For use in microclimatic considerations (s4.2.4, NZS 3604:2011) refer to SPS Building.</li> </ul>
On buildings located any proximity to a relevant boundary.	<ul style="list-style-type: none"> <li>› Where fire resistance rating (FRR) is required, this is subject to specific fire design.</li> </ul>
<b>Building</b> In conjunction with a primary structure that complies with the NZ Building Code or where the designer has established that the existing structure is suitable for the intended building work.	<ul style="list-style-type: none"> <li>› The substrate is subject to specific design in respect of E2 (external moisture).</li> </ul>



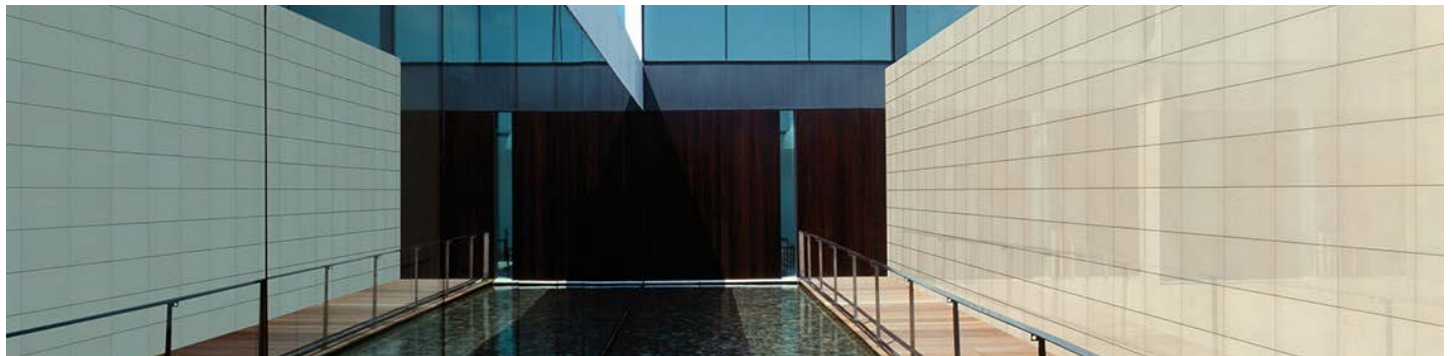
For further assistance please contact:

- ☎ +64 9 415 2669
- ✉ info@spsbuilding.co.nz
- 🌐 [www.spsbuilding.co.nz](http://www.spsbuilding.co.nz)



### CONDITIONS

The specification and installation must be carried out or supervised by suitably qualified practitioners.



### USEFUL INFORMATION

For information on the specification, installation and maintenance of the Frontek® Ceramic Tiles and for our warranty, refer to [www.spsbuilding.co.nz](http://www.spsbuilding.co.nz)

VERSION:

## PERFORMANCE CLAIMS

If designed, installed and maintained in accordance with all SPS Building Ltd requirements, Frontek® Ceramic Tiles will comply with or contribute to compliance with the following performance claims:

NZ Building Code clauses	BASIS OF COMPLIANCE <sup>1</sup>	
	Compliance statement	Demonstrated by
<b>B1 Structure</b> B1.3.1, B1.3.2, B1.3.3 (a, f, h, j, q), B1.3.4 (a, b, c, d, e)	ALTERNATIVE SOLUTION	> ETA 15/0262 and ETA 15/0916 confirm that the Frontek® Ceramic Tiles, when installed, meet the ETAG specification for ventilated wall claddings. These requirements also meet the building code requirements in respect of B1 (structure).
<b>B2 Durability</b> B2.3.1 (b)	VERIFICATION METHOD B2/VM1	> Stainless steel and aluminium are suitable for use in all corrosion zones. > ETA 15/0262 and ETA 15/0916 establishes that the ceramic tiles are not affected by freeze-thaw cycles. > Ceramic tiles have a history of use in NZ and are resistant to UV radiation, chemical and biological attack.
<b>C3 Fire Affecting Areas Beyond the Fire Source</b> C3.5, C3.7 (a)	ACCEPTABLE SOLUTION C/AS1 C/AS2 1st Edition June 2019	> The panels, clips and horizontal guides are non-combustible.
<b>E2 External Moisture</b> Contributes to E2.3.2	ALTERNATIVE SOLUTION	> ETA 15/0262 and ETA 15/0916 confirms that Frontek® Ceramic Tiles, when installed, contribute to the management of external moisture.
<b>F2 Hazardous Building Materials</b> F2.3.1	ALTERNATIVE SOLUTION	> Frontek® Ceramic Tiles meets EN ISO 14.021, which confirms that they do not contain or emit harmful materials.

1. The Compliance Statement is the pass holder's statement that they have met their obligations under s14G(2) of the Building Act 2004.

## SOURCES OF INFORMATION

- > Instituto de Ciencias de la Construcción [23/11/2015] European Technical Assessment [ETA] [15/0916] *Frontek® Plus and Frontek® Omega Plus. External Wall Claddings.*
- > Instituto de Ciencias de la Construcción [23/11/2015] European Technical Assessment [ETA] [15/0262] *Frontek® SuperPlus and Frontek® Omega SuperPlus. External Wall Claddings.*
- > Frontek® cerámica tecnológica en fachadas [05/2015] *Super Plus System.*
- > Greco Gras [nd]. EN ISO 14021 *Ecolabel Class I Environmental labels and declarations.*
- > SPS Building Ltd [14/09/2017] *Frontek® Façade System Product Technical Statement.*
- > Applus [3/11/2014] Report no. 14/911-1705 ENAC Certification.
- > Applus [19/01/2018] Test Report 17/15740-2362. AS 1530.1-1994 *Methods for fire test on building materials, components and structures. Part 1: Combustibility test for materials.*
- > Venatto Design S.L. [01/01/2015] DdP Num 0302 *Declaration of Performance.*
- > AWTA [15/11/2017] Test Number 17-005919 ISO 5660.1:2015 *Reaction to Fire Tests. Heat Release, Smoke Production and Mass Loss Rate. Part 1: Heat Release Rate and Smoke Production Rate.*

VERSION:

DATE:

Signed on behalf of SPS Building Ltd:

Note: Uncontrolled in printed format.

NAME:

Ben Heald

POSITION:

Director

By signing this pass™ the signatory confirms that, in respect of the subject of this pass™, the company has met their s14G obligations under the Building Act 2004.



16A Parkhead Place, Albany, Auckland > [info@spsbuilding.co.nz](mailto:info@spsbuilding.co.nz) > +64 9 415 2669 > [www.spsbuilding.co.nz](http://www.spsbuilding.co.nz)

This Product Assurance Supplier Statement (pass™) has been prepared by TBB in accordance with MBIE PTS guidelines and the recommendations of s9.2, Determination No. 2019-011 (issued 12 April 2019). TBB is ISO9001:2016 certified. Copyright © 2017, The Building Business Limited (TBB). All rights reserved.