

PORCELAIN FAÇADE CLADDING

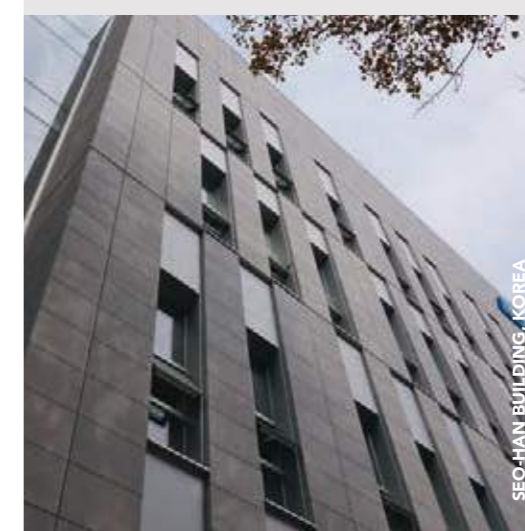
frontek
porcelain facades by extrusion

www.frontek.com.au



frontek

OFFICE, BOSNIA



SEO-HAN BUILDING, KOREA



HOSPITAL BUILDING, SPAIN



RESIDENTIAL BUILDING, TURKEY

ABOUT US

Frontek offers ceramic façade panels made in Spain that combines the elegance of porcelain, durability of stone and malleability of terracotta. These panels are designed to allow freedom of expression for architects and ease of installation for builders, even in the most demanding conditions.

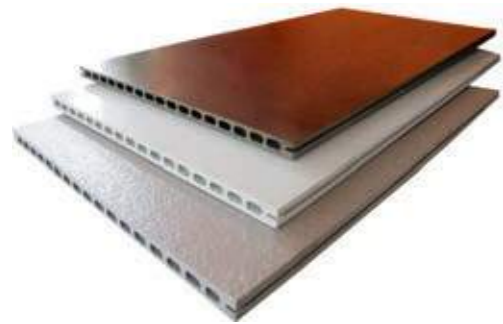
Frontek Australia Pty Ltd was established to support the promotion of our innovative cladding solutions in Australia's sophisticated construction market. We are committed to match the expectations of all professionals involved in building developments.

WHAT IS FRONTEK?

Our team has developed a unique piece of extruded ceramic in vitrified porcelain quality that has excellent properties for facade cladding.

Frontek tiles are extremely hard, with low water absorption, fireproof, and stable colours. They do not require special maintenance. They have long lifespan, are easy to clean, pollution resistant, and marine proof.

Our panels are also remarkably light (32 kg/m²). They are available in various sizes, from 300x600 to 1000x3000 mm. The standard size is 405x800 mm and 405x1000 mm. Extruded ceramic panels have been designed for easy installation into mechanical fixing systems.



FRONTEK COMPLIANCE WITH NCC

Parameter	Australian Code	MIN Requirement	Frontek Value	Standard
Tolerances	AS 2049-2002	Width: 2% Length: 2%	+0.00%, -0.17% +0.00%, -0.03%	UNE-EN ISO 10545-2:1998
Distortion	AS 2049-2002	3 mm	<0.2% (L=900 mm) =1.6 mm	UNE-EN ISO 10545-2:1998
Breaking load	AS 2049-2002	Transverse: 4 N/mm ²	6529 N (b=405 mm) =16.1 N/mm	UNE-EN ISO 10545-5:2012
Water absorption	AS 2049-2002	<10%	<0.5%	UNE-EN ISO 10545-3:1997
Freeze/Thaw	AS 2049-2002	5 cycles	100 Cycles without visible effects	UNE-EN ISO 10545-12:1997
Combustibility	AS 1530.1-1994	Non-combustible	Tested Non-combustible	Without need of test (According to 96/603 EC modified)





frontek

OFFICETEL, KOREA

WHY FRONTEK?

Frontek has developed a worldwide portfolio of projects that meet a variety of demands. Our facade cladding solutions have been used in hotels, hospital, schools, residential, corporate office, retail and industrial. Our cladding solutions come with unique properties and easy installation, specifically designed for high-rise buildings and extremely challenging projects.

Frontek cladding can tick all the boxes:

	FIREPROOF AS1530.1 - Non-combustible AWTA ISO 5660.1 - Group 1
	COLOUR STABLE Full body colored porcelain. UV resistant. Guaranteed 10 years.
	MARINE PROOF Humid salty environments have no impact on porcelain cladding.
	POLLUTION High resistance to chemical aggressions even in high concentration.
	LIFESPAN Impervious over time, will not be affected by frost or thermal shocks.
	CLEANING Stain resistant and because of a very low porosity it is very hygienic and easy to clean.
	MAINTENANCE Frontek does not require any special maintenance.
	HARDNESS Surface scratch hardness. 5-7 Mohs scale.



FRONTEK IN AUSTRALIA



frontek

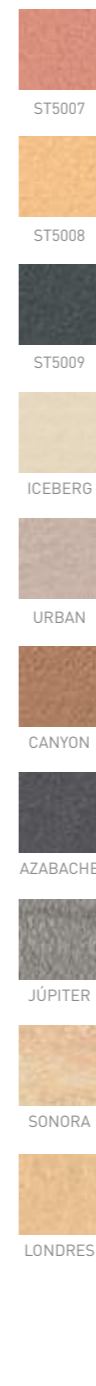
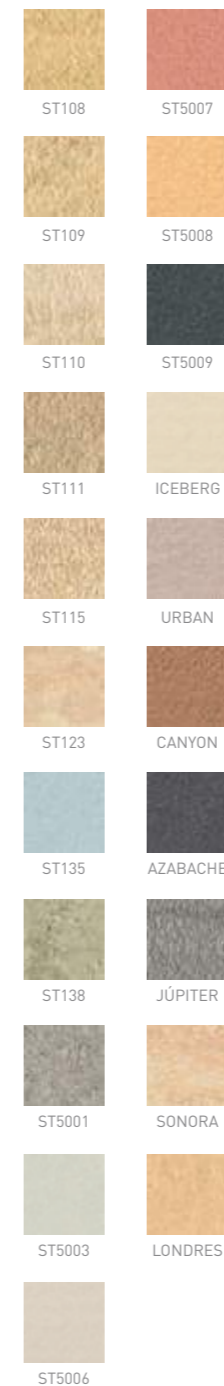
Frontek offers a wide range of finishes to suit the latest trends in architecture. A variety of pieces can be combined to give each façade an original and trendy design. All façade panels can be adapted to any building peculiar and its surroundings.

Frontek has different collections: textured, polished, natural and glazed. We also provide customised designs to satisfy the most selective demands.

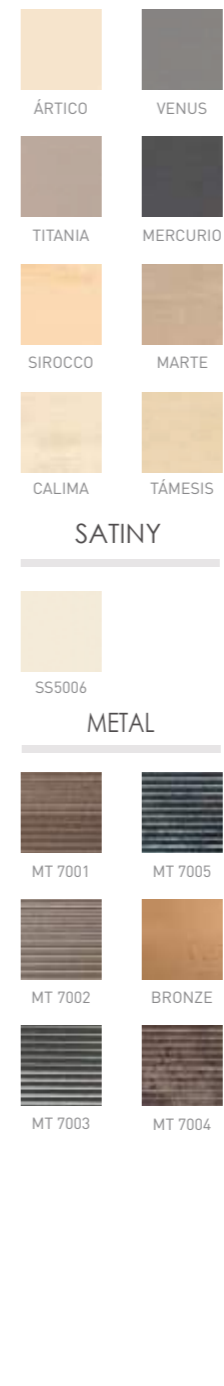
Our design team will help you find that exclusive finish you are looking for.

COLLECTIONS

TEXTURED



POLISHED

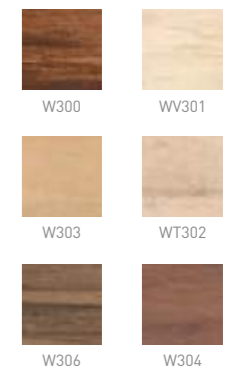


SATINY



NATURE

TIMBER LIKE



VOLUME



TEXTURED

ST 108



ST 109



ST 5006



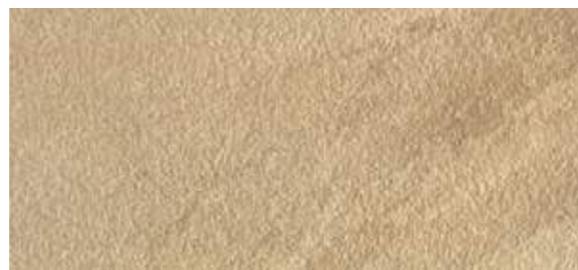
ST5007



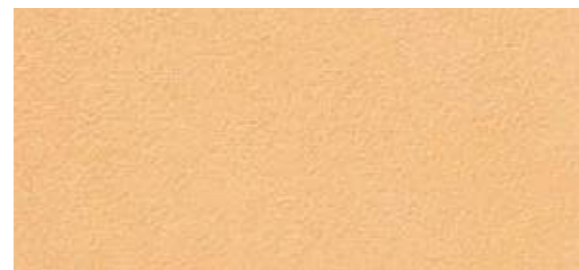
ST 110



ST 111



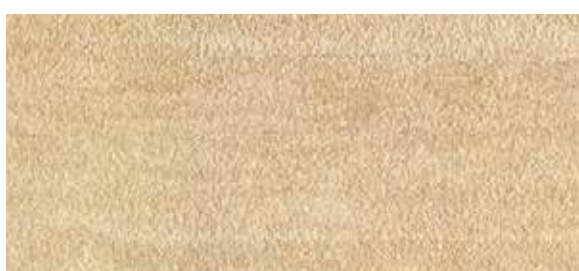
ST 5008



ST5009



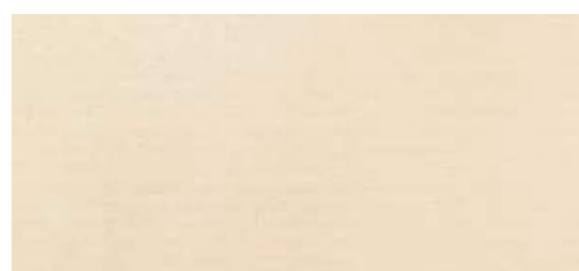
ST 115



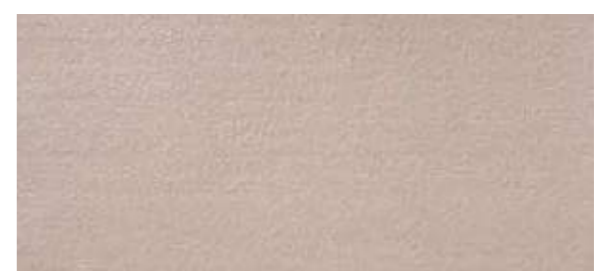
ST 123



ICEBERG



URBAN



ST 135



ST 138



CANYON



AZABACHE



ST 5001



ST 5003



JUPITER



SONORA

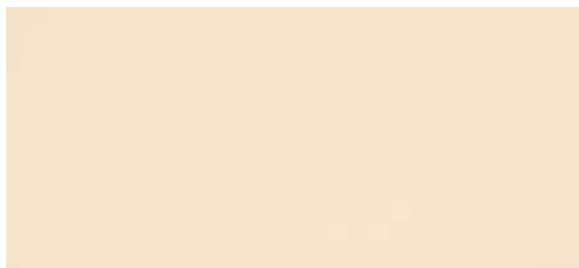


LONDRES

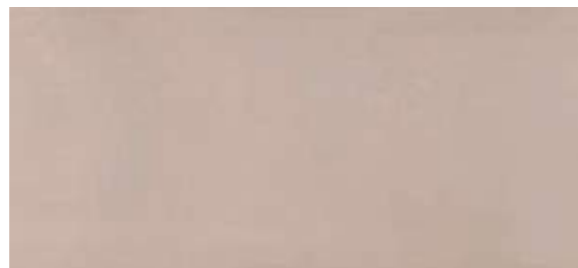


POLISHED

ARTICO



TITANIA



SIROCCO



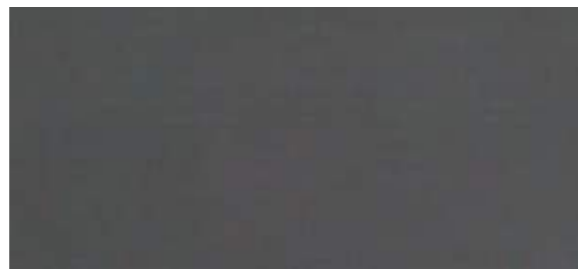
CALIMA



VENUS



MERCURIO



MARTE



TAMESIS



NATURE

S100



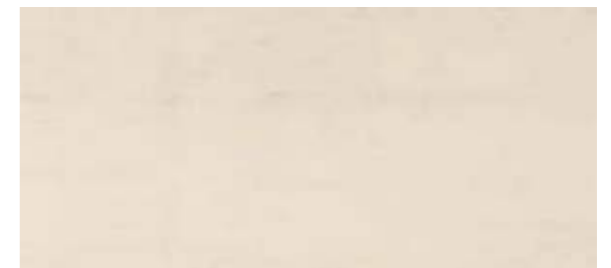
S101



S102



S103



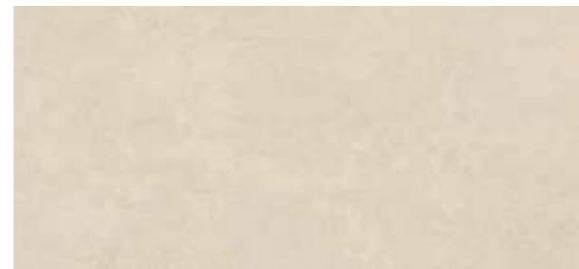
S104



S105



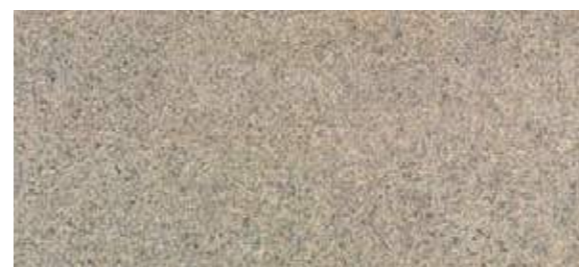
S106



S107



S113



S117



S118



S119



S129



S130



S120



S121



S132



S139



S122



S124



S140



S141



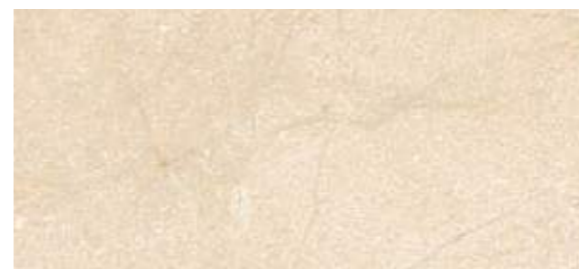
S125



S126



S142



S127



S128



METAL

MT7001



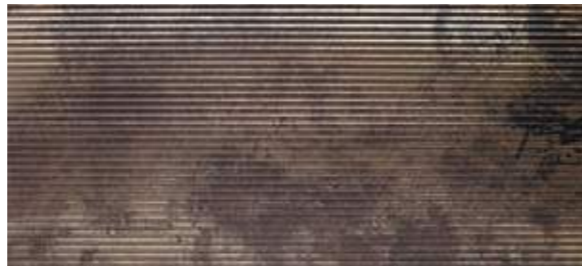
MT7002



MT7003



MT7004



MT7005



BRONZE



TIMBER LIKE

W300



W303



W304



W306



WT302



WV301



VOLUME

V1007



URANO



SV6001



SV114



V1001



V1002



V1003



V1004



V1005



V1006





frontek

CARRIL DEL CONDE, SPAIN



frontek

GYS TOWER, INDIA

FIXING SYSTEMS

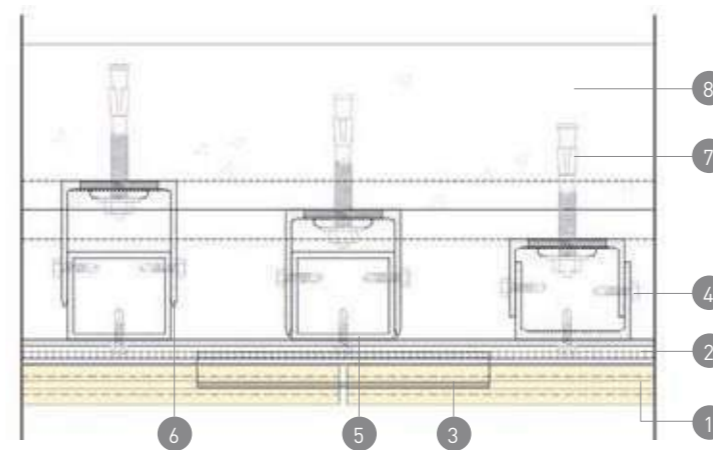


Our engineers have recently developed new fixing systems that meet the Australian standards. Frontek cladding systems come in black anodized aluminium with stainless steel accessories.

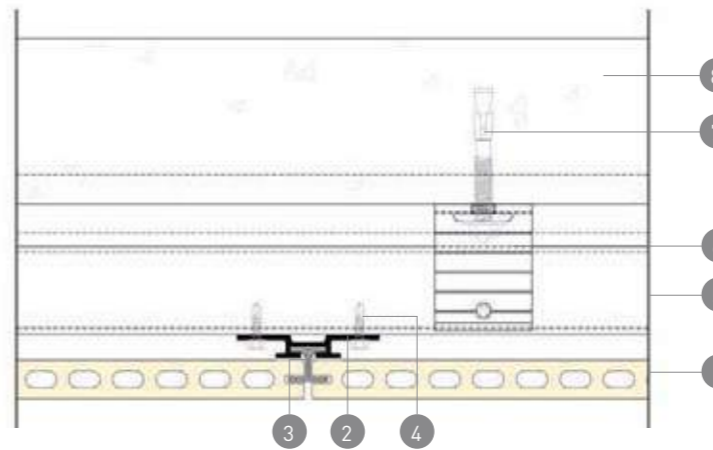
Panels can be fixed in horizontal, vertical and in soffit with each fixing system, taking advantage of ventilated facades.

Frontek offers cladding solutions for brick and concrete walls, stud walls, curtain walls, unitized and modular systems. We also offer customised solutions if required.

SOFFIT FIXING

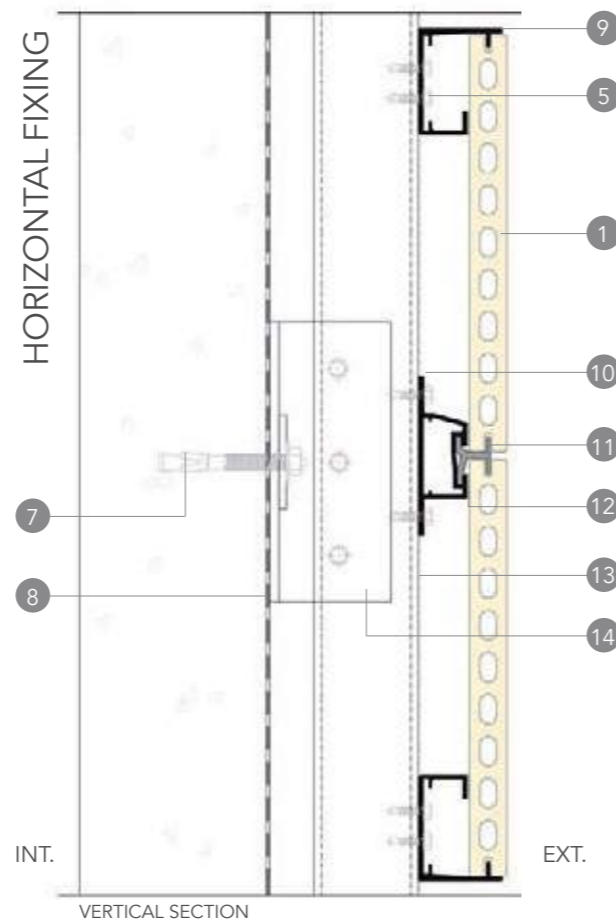


LONGITUDINAL SECTION



CROSS SECTION

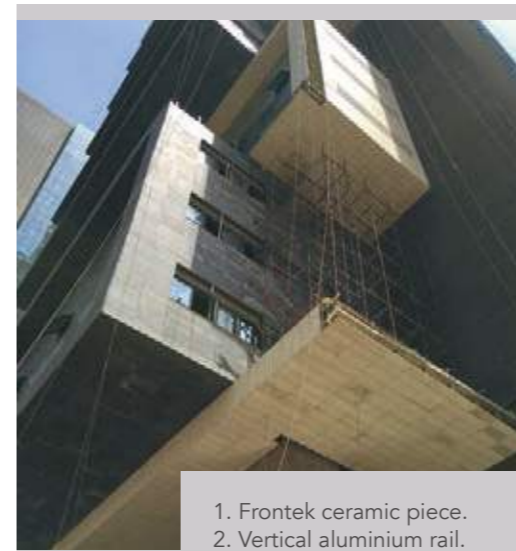
1. Frontek ceramic piece.
2. Vertical ceiling installation rail.
3. Vertical ceiling installation clip.
4. Stainless Steel self drilling screw.
5. Square pipe 3 mm thick.
6. CW 13-47.
7. Expansion anchor.
8. Slab.



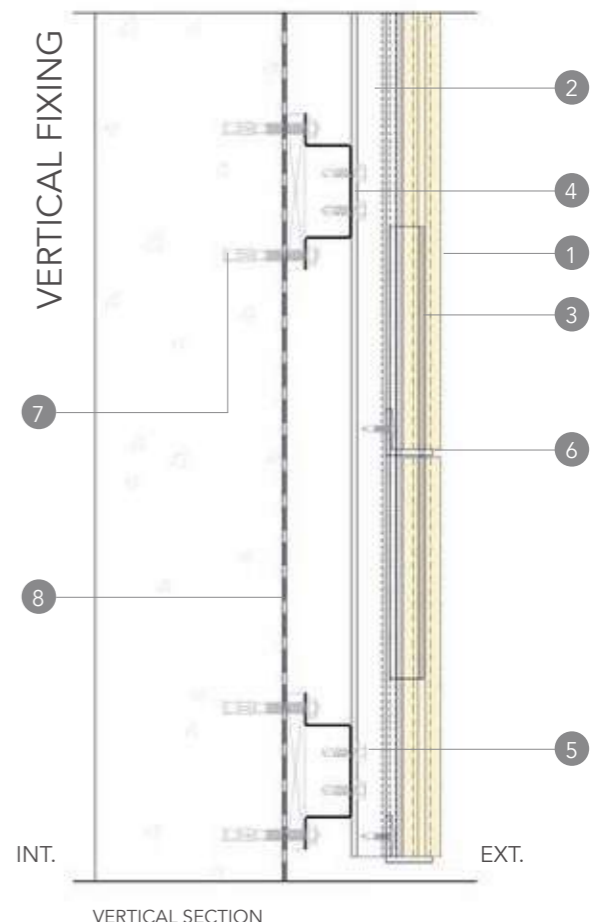
INT.

EXT.

VERTICAL SECTION



1. Frontek ceramic piece.
2. Vertical aluminium rail.
3. Vertical aluminium rail clip.
4. Top hat galvanized steel.
5. Stainless steel self drilling screw.
6. 25x25x3 mm aluminium angle.
7. Expansion anchor.
8. Engineered backpan.
9. Horizontal aluminium rail top/bottom.
10. Horizontal aluminium rail standard.
11. Horizontal aluminium rail clip.
12. Sealant.
13. Vertical mullion.
14. Fixing bracket.



INT.

EXT.

VERTICAL SECTION

INSTALLATION CONFIGURATIONS



STUD WALL



SOLID WALL



SLAB TO SLAB

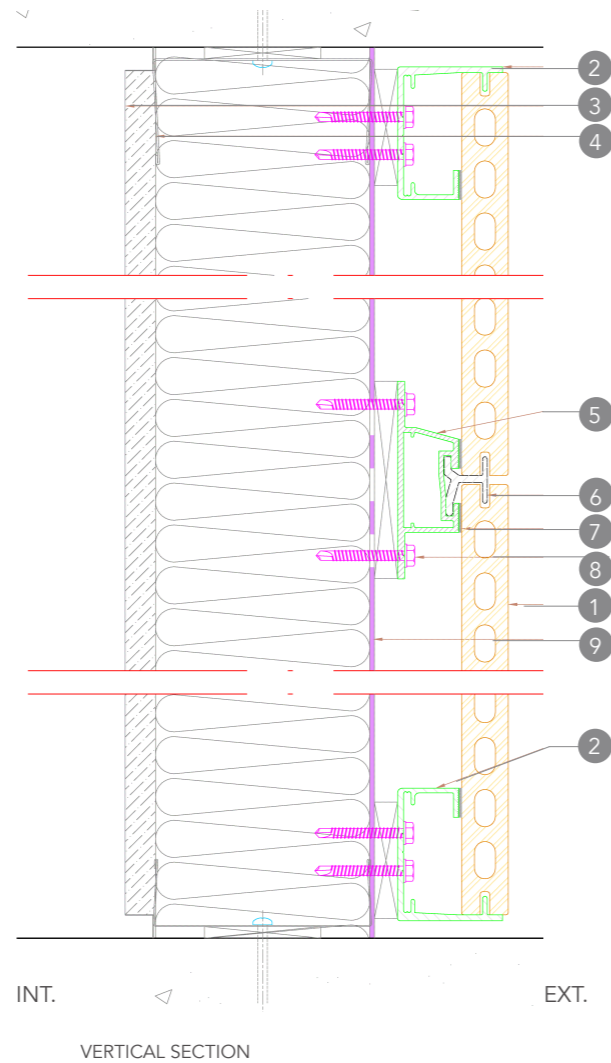


UNITIZED SYSTEM

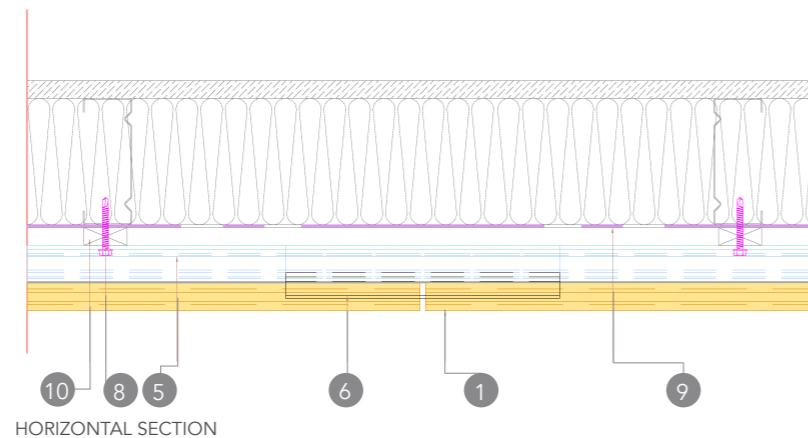


CUSTOMIZED SOLUTIONS

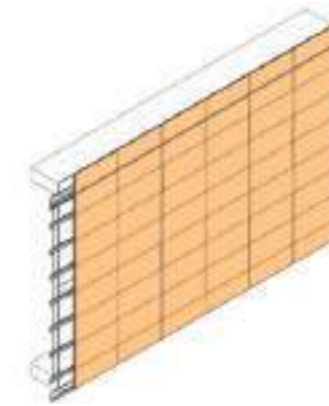
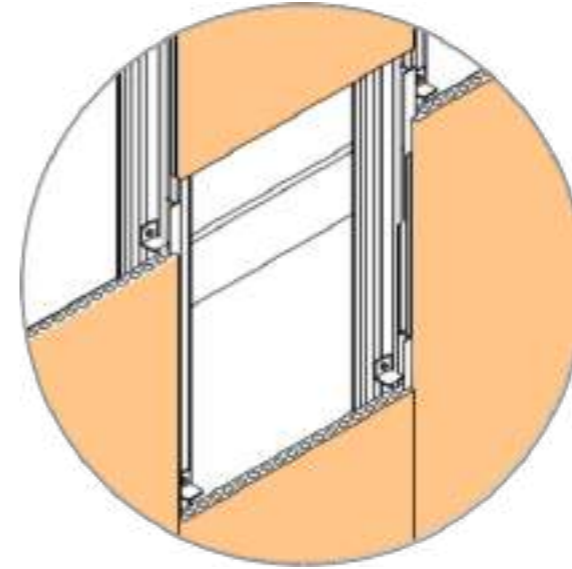
STUD WALL INSTALLATION - HORIZONTAL FIXING



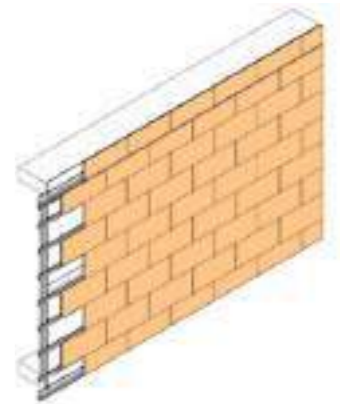
1. Frontek ceramic piece.
2. Horizontal aluminium rail top/bottom.
3. 13 mm Plaster board
4. 92 mm Steel Stud
5. Horizontal aluminium rail standard.
6. Horizontal aluminium rail clip.
7. Sealant.
8. Stainless steel self drilling screw.
9. Engineered backpan.
10. 5mm Packer.



HORIZONTAL CONFIGURATION

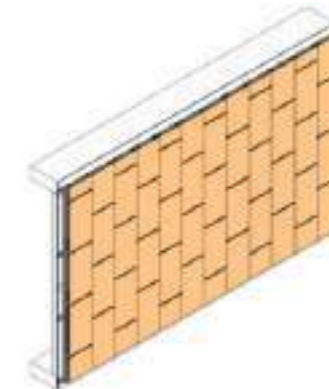
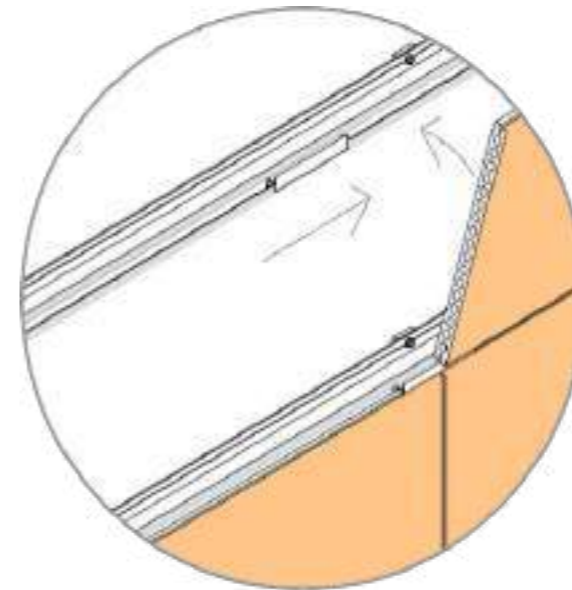


HORIZONTAL NET PATTERN CONFIGURATION

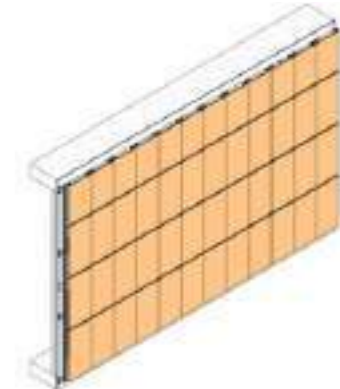


HORIZONTAL BRICK PATTERN CONFIGURATION

VERTICAL CONFIGURATION



HORIZONTAL NET PATTERN CONFIGURATION



HORIZONTAL BRICK PATTERN CONFIGURATION

NON-COMBUSTIBLE MATERIAL

Extruded porcelain ceramic panels are produced at a firing temperature of 1300 degrees Celsius inside the kiln.

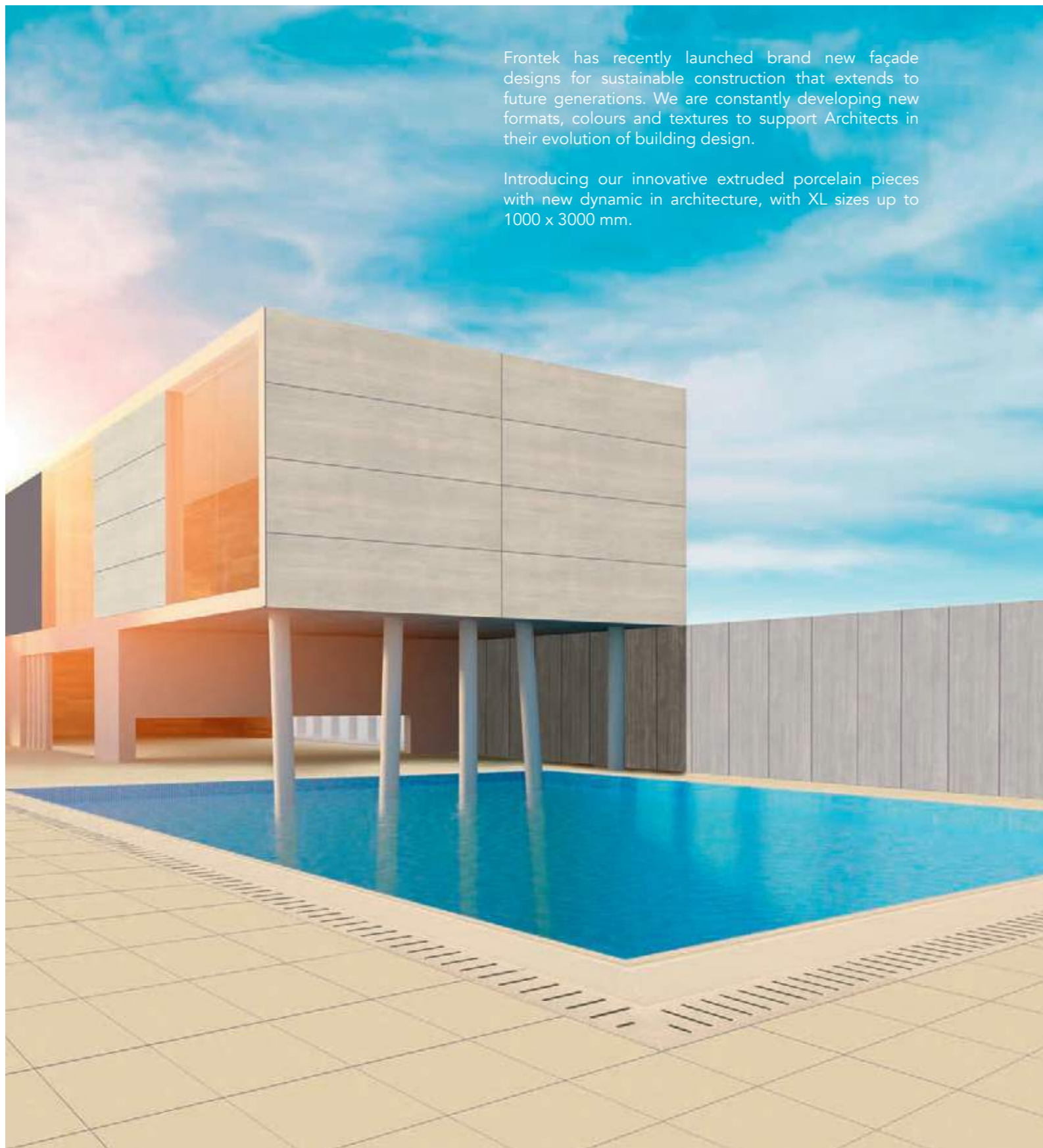
Porcelain ceramic panels have been successfully tested to:



- BCA AS1530.1 - Non combustibility
- Group 1 rating to AWTA ISO 5660.1 - 2015 - Zero emissions material
- Euroclass A1 EN ISO 1182 - Non combustibility

Frontek has recently launched brand new façade designs for sustainable construction that extends to future generations. We are constantly developing new formats, colours and textures to support Architects in their evolution of building design.

Introducing our innovative extruded porcelain pieces with new dynamic in architecture, with XL sizes up to 1000 x 3000 mm.



W307*
100 x 300 cm



Other dimensions and models also available. Each tile measures up to 100 x 300 cm upon request.



S143*
100 x 300 cm



Other dimensions and models also available. Each tile measures up to 100 x 300 cm upon request.



S144*
100 x 300 cm



Other dimensions and models also available. Each tile measures up to 100 x 300 cm upon request.



FACADES REFURBISHMENT

Frontek panels have been used in a wide range of remedial and refurbishment works to complete stunning and eco-friendly projects.

Architects worldwide have chosen Frontek ceramic panels for their façade renovations because our materials are sustainable. With stronger and upgraded façade beyond just the physical, their projects will last a lifetime.

Frontek is a lightweight cladding that can replace or be installed directly over deteriorating masonry, precast concrete, or other claddings. The installation can be done on the exterior without affecting the building. In some instances, our solutions can be installed without removing the original cladding, creating a clean and safe finish.

The result is a straight-forward process that not only ensures your building's future but also leaves you with lower maintenance costs and great valuation boost of assets.

- ✓ EASY TO CLAD
- ✓ QUICK AND SAFE INSTALLATION
- ✓ NON-COMBUSTIBLE





FRONTEK AUSTRALIA PTY LTD.