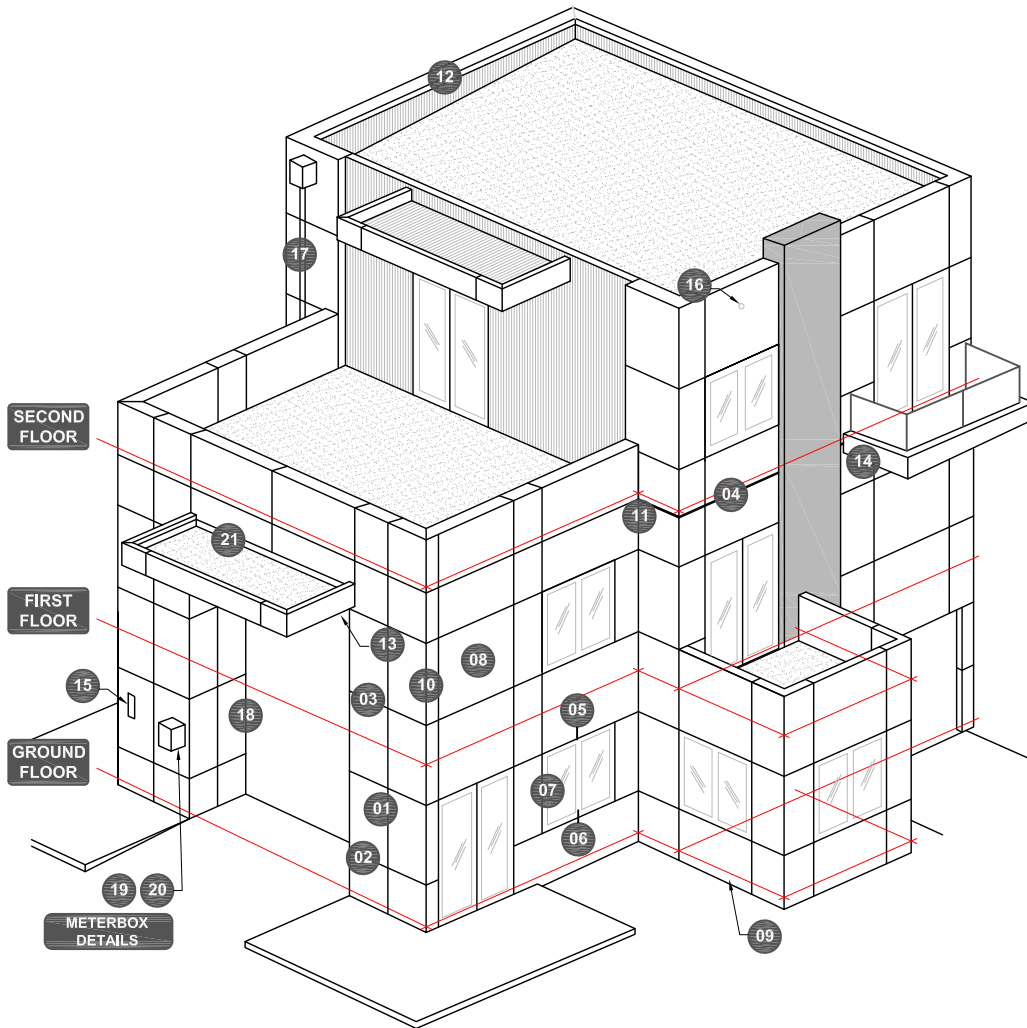
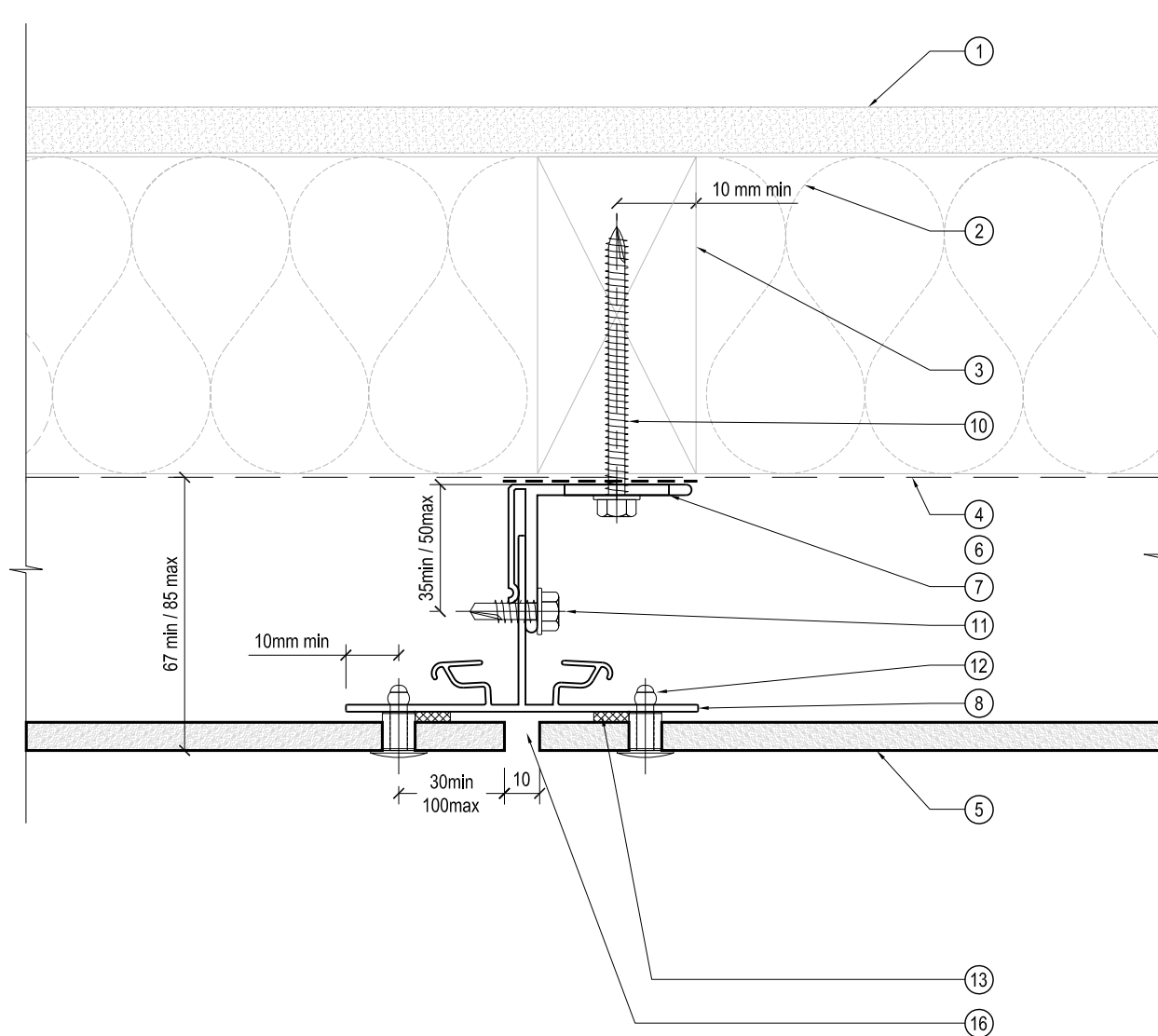


CONTENT PAGE



01	STANDARD VERTICAL JOINT DETAIL
02	STANDARD HORIZONTAL JOINT DETAIL 1
03	STANDARD HORIZONTAL JOINT DETAIL 2
04	INTERSTOREY HORIZONTAL JOINT DETAIL
05	RESIDENTIAL WINDOW HEAD DETAIL
06	RESIDENTIAL WINDOW SILL DETAIL
07	RESIDENTIAL WINDOW JAMB DETAIL
08	STANDARD INTERMEDIA SUPPORT DETAIL
09	BACE CLEARANCE DETAIL
10	EXTERNAL CORNER DETAIL
11	INTERNAL CORNER DETAIL
12	PARAPET DETAIL
13	WALL AND SOFFIT DETAIL
14	WALL / FASCIA AND SOFFITE DETAIL
15	STANDARD PENETRATION DETAIL
16	STANDARD PIPE PENETRATION DETAIL
17	DOWNPIPE FIXING DETAIL
18	VERTICAL CONNECTION TO THE WALL/ ELEM.
19	METERBOX HEAD AND SILL DETAIL
20	JAMB METREBOX CONNECTION DETAIL
21	WALL TO METAL ROOF DETAIL
22	
23	
24	
25	
26	
27	
28	
29	
30	
31	
32	
33	
34	
35	
36	
37	
38	
39	
40	
41	
42	
43	
44	
45	

EQUITONE SYSTEM (mechanical fixings)



NOTES / SPECIFICATION :

1. SELECTED INTERNAL LINING, BY OTHERS
2. INSULATION IF REQUIRED, BY OTHERS
3. FRAMING TO NZS3604, BY OTHERS
4. AIR BARRIER (RIGID OR FLEXIBLE WALL UNDERLAY), BY OTHERS
5. EQUITONE 8MM THICK FIBRE CEMENT PANEL, BY SYMONITE
6. DRAINED AND VENTILATED CAVITY
7. T50BR ALUMINIUM MILL FINISH CLADDING SUPPORT BRACKET OVER BUTYL PAD (MIN 2 PER RAIL, SPACED @ 800mm CRS MAX), BY SYMONITE
8. T50VR ALUMINIUM BLACK POWDERCOATED VERTICAL SUPPORT RAIL (SPACED @ 600mm CRS MAX), BY SYMONITE
9. T50VRI ALUMINIUM MILL FINISH VERTICAL INTERMEDIATE SUPPORT RAIL (SPACED @ 600mm CRS MAX), BY SYMONITE
10. SS HEX TEK T17 TIP SCREW 14g x 75 mm, BY SYMONITE
11. SS HEX TEK SDS TIP SCREW 14g x 25 mm, BY SYMONITE
12. PROPRIETARY STAINLESS STEEL 4.8 mm RIVET POWDERCOATED OR STAINLESS STEEL FINISH (MIN 2 PER SHEET, SPACED @ 600mm CRS MAX), BY SYMONITE
13. PROPRIETARY BLACK PVC FOAM TAPE 9x3mm, CONTINUOUS VERTICAL, BY SYMONITE
14. CORNER CLIP PROFILE, FIXED WITH STAINLESS STEEL S/ TAP PH 8g x 12mm (min 2 PER RAIL), BY SYMONITE
15. ALU./ALU. No. 4 CSK POP-RIVET (min 2 PER RAIL, SPACED @ 600mm CRS MAX), BY SYMONITE
16. 10mm NEGATIVE JOINT
17. T50 HR HORIZONTAL FLASHING, BLACK POWDERCOATED FINISH, ADHESIVE FIXING TO TOP EDGE OF THE EQUITONE FIBER CEMENT PANEL, BY SYMONITE
18. STRUCTURAL TIMBER NOG TO NZS3604 PRIOR INSTALLATION, FIXED WITH MINIMUM 3 NAILS, BY OTHERS
19. SCREW FIXING, BY SYMONITE
20. FIXING INTO TIMBER WITH SS HEX TEK T17 TIP SCREW 10g x 35 mm @ 400 CRS max, BY SYMONITE
21. T50JC ALUM. RAIL, MILL FINISH, CONTINUOUS VERTICAL, BY SYMONITE
22. BUTYL TAPE 50mm MIN COVER ON EACH SIDE, BY OTHERS
23. FOLDED METAL FLASHING TO SUIT, BY OTHERS
24. BUTYL TAPE 35mm MIN COVER ON THE FLASHING, BY SYMONITE
25. BUTYL TAPE DRESSED OVER METAL FLASHING, BY OTHERS
26. FOLDED METAL FLASHING 60mm MIN COVER ON EACH SIDE, BY OTHERS
27. SEALANT ON PEF ROD, BY SYMONITE
28. PANEL TACK STRUCTURAL ADHESIVE BY SYMONITE

SYMONITE

DRAWING TITLE

STANDARD VERTICAL JOINT DETAIL

DRAWING STATUS

**ARCHITECTURAL
RESOURCE**

SHEET NO.

01

ISSUE

A

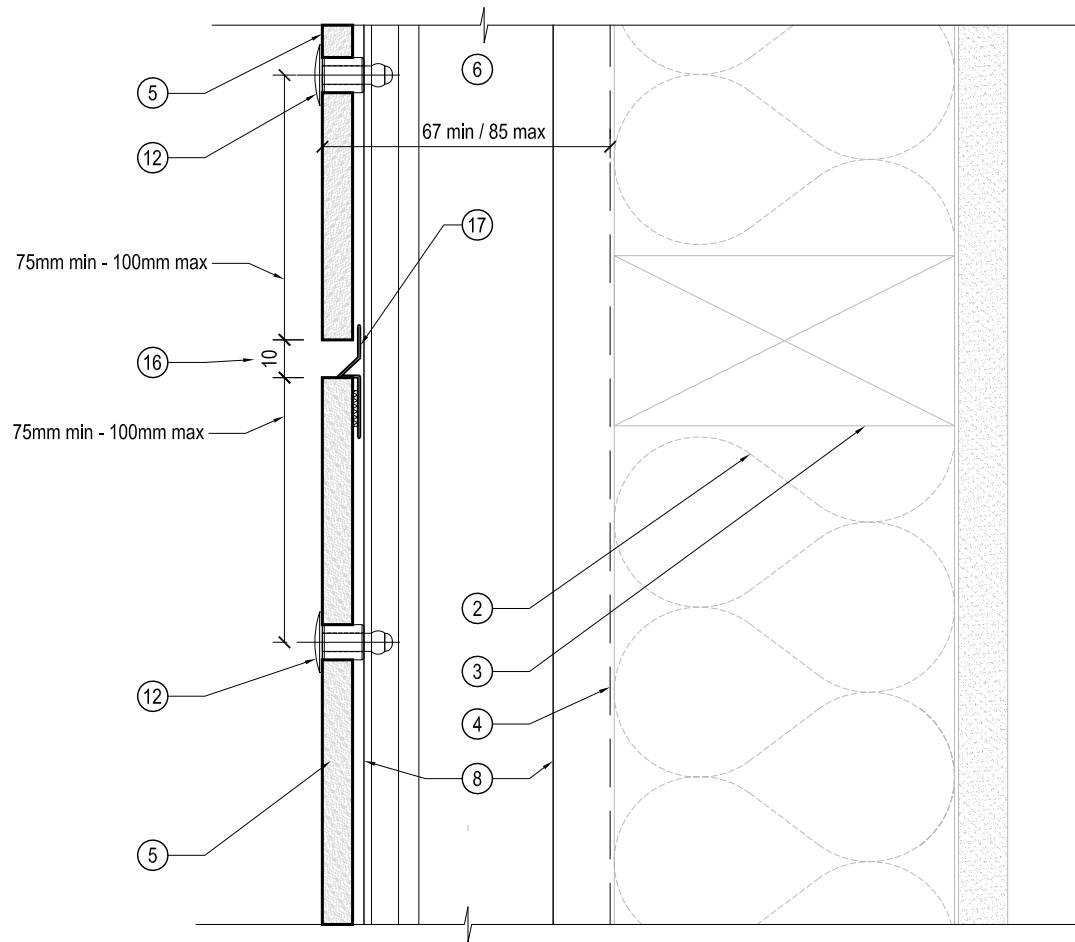
SCALE: 1:2

DATE: MAY 2019

SYMONITE PANELS LIMITED, P.O.Box 101 760, North Shore, Auckland, 72 Ellise Road, Glenfield, Auckland, New Zealand, Telephone 09 443 3896, Facsimile 09 444 2142, Web Site www.symonite.co.nz

Copyright of this drawing shall remain the property of SYMONITE PANELS LTD. No part of this document may be reproduced or transmitted by any means without the prior permission in writing of SYMONITE PANELS LTD.

EQUITONE SYSTEM (mechanical fixings)



NOTES / SPECIFICATION :

- DRAINAGE AND VENTILATION SLOT
- INSULATION IF REQUIRED, BY OTHERS
- FRAMING TO NZS3604, BY OTHERS
- AIR BARRIER (RIGID OR FLEXIBLE WALL UNDERLAY), BY OTHERS
- EQUITONE 8MM THICK FIBRE CEMENT PANEL, BY SYMONITE
- DRAINED AND VENTILATED CAVITY
- T50BR ALUMINIUM MILL FINISH CLADDING SUPPORT BRACKET OVER BUTYL PAD (MIN 2 PER RAIL, SPACED @ 600mm CRS MAX), BY SYMONITE
- T50VR ALUMINIUM BLACK POWDERCOATED VERTICAL SUPPORT RAIL (SPACED @ 600mm CRS MAX), BY SYMONITE
- T50VRI ALUMINIUM MILL FINISH VERTICAL INTERMEDIATE SUPPORT RAIL (SPACED @ 600mm CRS MAX), BY SYMONITE
- SS HEX TEK T17 TIP SCREW 14g x 75 mm, BY SYMONITE
- SS HEX TEK SDS TIP SCREW 14g x 25 mm, BY SYMONITE
- PROPRIETARY STAINLESS STEEL 4.8 mm RIVET POWDERCOATED OR STAINLESS STEEL FINISH (MIN 2 PER SHEET, SPACED @ 600mm CRS MAX), BY SYMONITE
- PROPRIETARY BLACK PVC FOAM TAPE 9x3mm, CONTINUOUS VERTICAL, BY SYMONITE
- CORNER CLIP PROFILE, FIXED WITH STAINLESS STEEL S/ TAP PH 8g x 12mm (min 2 PER RAIL), BY SYMONITE
- ALU./ALU. 1.4 CSK POP-RIVET (min 2 PER RAIL, SPACED @ 600mm CRS MAX), BY SYMONITE
- 10mm NEGATIVE JOINT
- T50 HR HORIZONTAL FLASHING, BLACK POWDERCOATED FINISH, ADHESIVE FIXING TO TOP EDGE OF THE EQUITONE FIBER CEMENT PANEL, BY SYMONITE
- STRUCTURAL TIMBER NOG TO NZS3604 PRIOR INSTALLATION, FIXED WITH MINIMUM 3 NAILS, BY OTHERS
- SCREW FIXING, BY SYMONITE
- FIXING INTO TIMBER WITH SS HEX TEK T17 TIP SCREW 10g x 35 mm @ 400 CRS max, BY SYMONITE
- T50JC ALUM. RAIL, MILL FINISH, CONTINUOUS VERTICAL, BY SYMONITE
- BUTYL TAPE 50mm MIN COVER ON EACH SIDE, BY OTHERS
- FOLDED METAL FLASHING TO SUIT, BY OTHERS
- CONTINUOUS BUTYL TAPE, 35mm MIN COVER ON THE FLASHING, BY SYMONITE
- BUTYL TAPE DRESSED OVER, BY OTHERS
- FOLDED METAL FLASHING 60mm MIN COVER ON EACH SIDE, BY OTHERS
- SEALANT ON PEF ROD, BY SYMONITE
- PANEL TACK STRUCTURAL ADHESIVE BY SYMONITE

SYMONITE

DRAWING TITLE

STANDARD HORIZONTAL JOINT DETAIL
OPTION 1

DRAWING STATUS

ARCHITECTURAL
RESOURCE

SCALE: 1:2

SHEET NO.

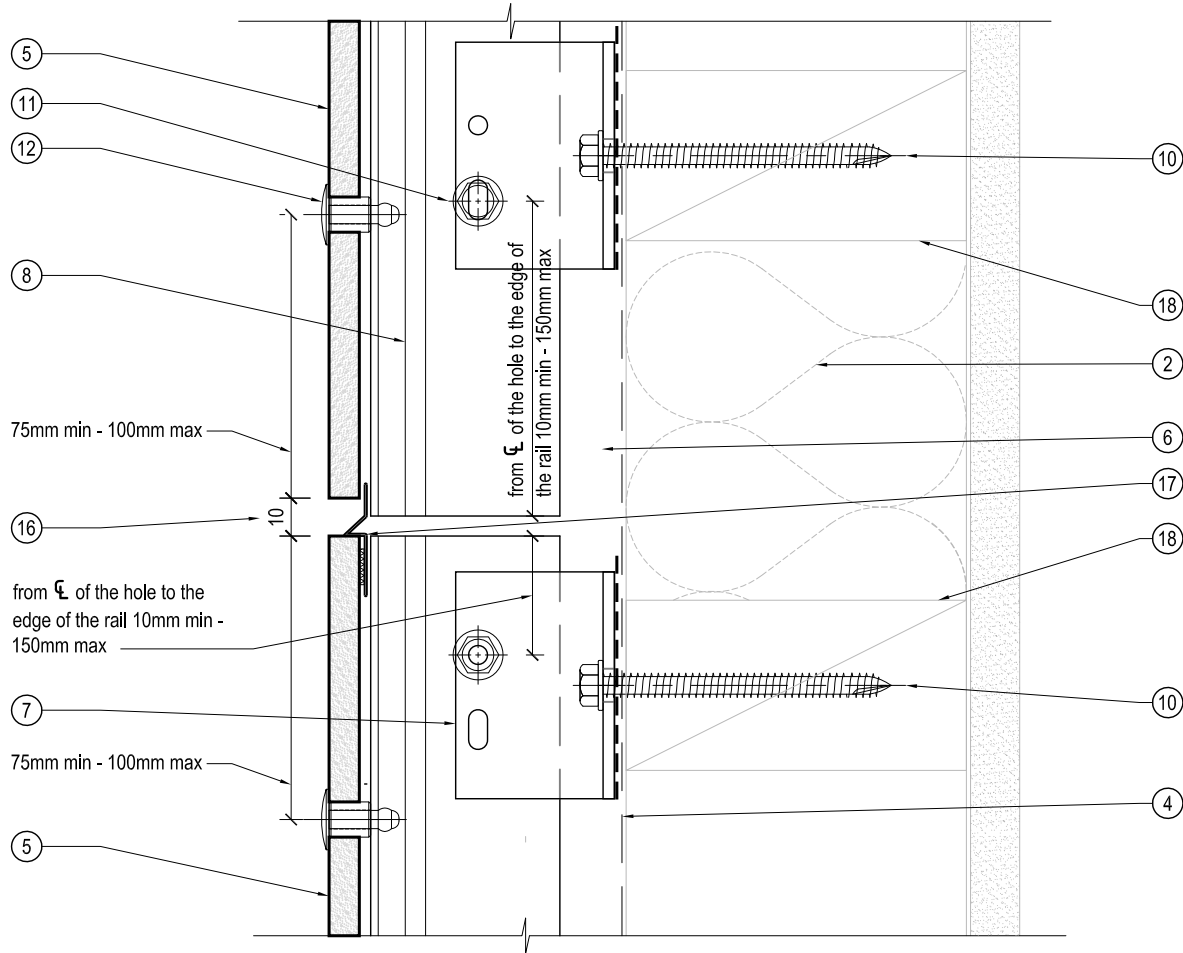
02

ISSUE

A

DATE: MAY 2019

EQUITONE SYSTEM (mechanical fixings)



NOTES / SPECIFICATION :

1. DRAINAGE AND VENTILATION SLOT
2. INSULATION IF REQUIRED, BY OTHERS
3. FRAMING TO NZS3604, BY OTHERS
4. AIR BARRIER (RIGID OR FLEXIBLE WALL UNDERLAY), BY OTHERS
5. EQUITONE 8MM THICK FIBRE CEMENT PANEL, BY SYMONITE
6. DRAINED AND VENTILATED CAVITY
7. T50BR ALUMINIUM MILL FINISH CLADDING SUPPORT BRACKET OVER BUTYL PAD (MIN 2 PER RAIL, SPACED @ 800mm CRS MAX), BY SYMONITE
8. T50VR ALUMINIUM BLACK POWDERCOATED VERTICAL SUPPORT RAIL (SPACED @ 600mm CRS MAX), BY SYMONITE
9. T50VRI ALUMINIUM MILL FINISH VERTICAL INTERMEDIATE SUPPORT RAIL (SPACED @ 600mm CRS MAX), BY SYMONITE
10. SS HEX TEK T17 TIP SCREW 14g x 75 mm, BY SYMONITE
11. SS HEX TEK SDS TIP SCREW 14g x 25 mm, BY SYMONITE
12. PROPRIETARY STAINLESS STEEL 4.8 mm RIVET POWDERCOATED OR STAINLESS STEEL FINISH (MIN 2 PER SHEET, SPACED @ 600mm CRS MAX), BY SYMONITE
13. PROPRIETARY BLACK PVC FOAM TAPE 9x3mm, CONTINUOUS VERTICAL, BY SYMONITE
14. CORNER CLIP PROFILE, FIXED WITH STAINLESS STEEL S/ TAP PH 8g x 12mm (min 2 PER RAIL), BY SYMONITE
15. ALU./ALU. 1. 4 CSK POP-RIVET (min 2 PER RAIL, SPACED @ 600mm CRS MAX), BY SYMONITE
16. 10mm NEGATIVE JOINT
17. T50 HR HORIZONTAL FLASHING, BLACK POWDERCOATED FINISH, ADHESIVE FIXING TO TOP EDGE OF THE EQUITONE FIBRE CEMENT PANEL, BY SYMONITE
18. STRUCTURAL TIMBER NOG TO NZS3604 PRIOR INSTALLATION, FIXED WITH MINIMUM 3 NAILS, BY OTHERS
19. SCREW FIXING, BY SYMONITE
20. FIXING INTO TIMBER WITH SS HEX TEK T17 TIP SCREW 10g x 35 mm @ 400 CRS max, BY SYMONITE
21. T50JC ALUM. RAIL, MILL FINISH, CONTINUOUS VERTICAL, BY SYMONITE
22. BUTYL TAPE 50mm MIN COVER ON EACH SIDE, BY OTHERS
23. FOLDED METAL FLASHING TO SUIT, BY OTHERS
24. CONTINUOUS BUTYL TAPE, 35mm MIN COVER ON THE FLASHING, BY SYMONITE
25. BUTYL TAPE DRESSED OVER, BY OTHERS
26. FOLDED METAL FLASHING 60mm MIN COVER ON EACH SIDE, BY OTHERS
27. SEALANT ON PEF ROD, BY SYMONITE
28. PANEL TACK STRUCTURAL ADHESIVE BY SYMONITE



DRAWING TITLE

STANDARD HORIZONTAL JOINT DETAIL OPION 2

DRAWING STATUS

**ARCHITECTURAL
RESOURCE**

SHEET NO.

03

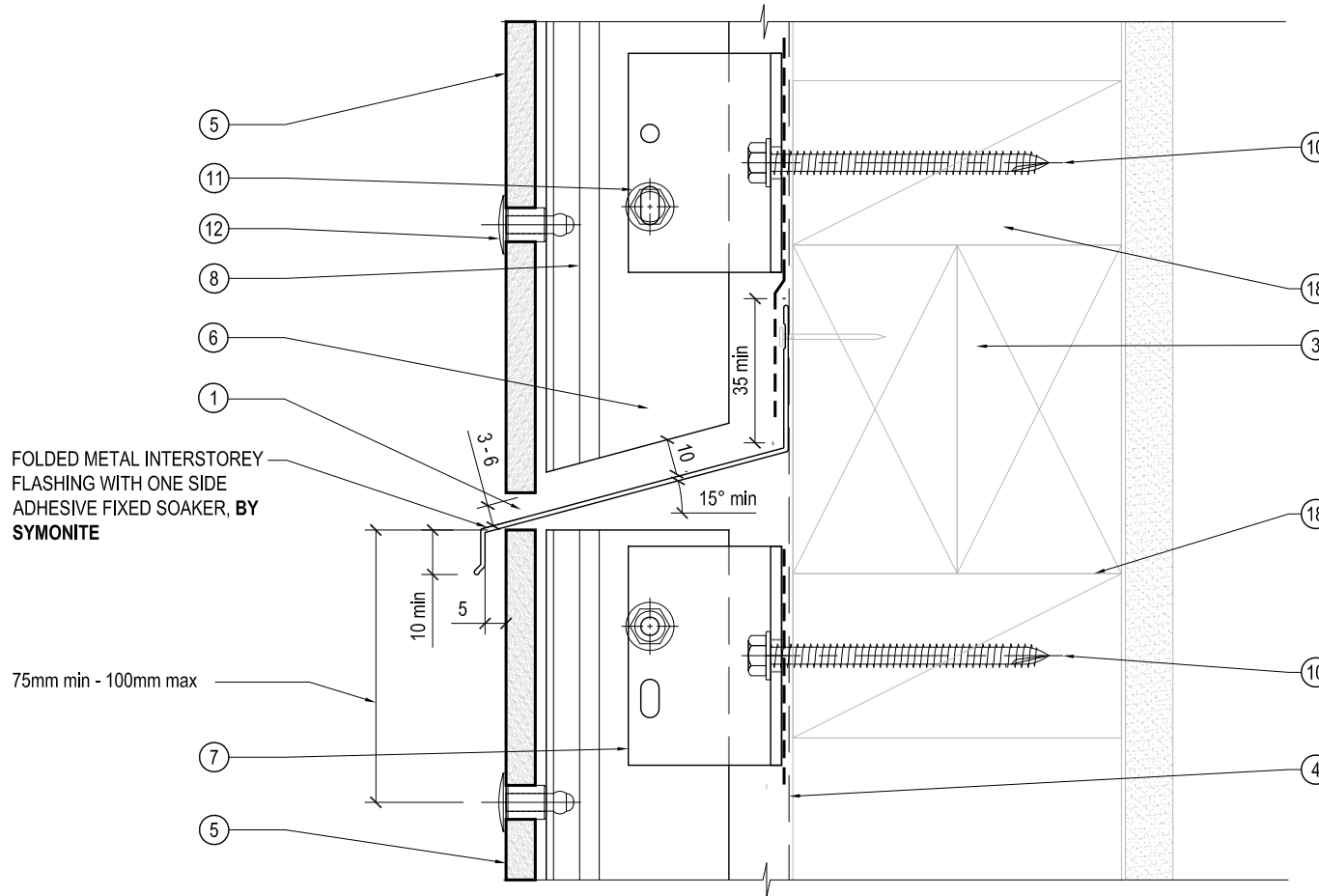
ISSUE

A

SCALE: 1:2

DATE: MAY 2019

EQUITONE SYSTEM (mechanical fixings)



NOTE

INTERSTOREY FLASHING IS ONLY REQUIRED ON HIGHRISE BUILDINGS AT EVERY SECOND FLOOR LEVEL

NOTES / SPECIFICATION :

- DRAINAGE AND VENTILATION SLOT
- INSULATION IF REQUIRED, BY OTHERS
- FRAMING TO NZS3604, BY OTHERS
- AIR BARRIER (RIGID OR FLEXIBLE WALL UNDERLAY), BY OTHERS
- EQUITONE 8MM THICK FIBRE CEMENT PANEL, BY SYMONITE
- DRAINED AND VENTILATED CAVITY
- T50BR ALUMINIUM MILL FINISH CLADDING SUPPORT BRACKET OVER BUTYL PAD (MIN 2 PER RAIL, SPACED @ 800mm CRS MAX), BY SYMONITE
- T50VR ALUMINIUM BLACK POWDERCOATED VERTICAL SUPPORT RAIL (SPACED @ 600mm CRS MAX), BY SYMONITE
- T50VRI ALUMINIUM MILL FINISH VERTICAL INTERMEDIATE SUPPORT RAIL (SPACED @ 600mm CRS MAX), BY SYMONITE
- SS HEX TEK T17 TIP SCREW 14g x 75 mm, BY SYMONITE
- SS HEX TEK SDS TIP SCREW 14g x 25 mm, BY SYMONITE
- PROPRIETARY STAINLESS STEEL 4.8 mm RIVET POWDERCOATED OR STAINLESS STEEL FINISH (MIN 2 PER SHEET, SPACED @ 600mm CRS MAX), BY SYMONITE
- PROPRIETARY BLACK PVC FOAM TAPE 9x3mm, CONTINUOUS VERTICAL, BY SYMONITE
- CORNER CLIP PROFILE, FIXED WITH STAINLESS STEEL S/ TAP PH 8g x 12mm (min 2 PER RAIL), BY SYMONITE
- ALU./ALU. 1. 4 CSK POP-RIVET (min 2 PER RAIL, SPACED @ 600mm CRS MAX), BY SYMONITE
- 10mm NEGATIVE JOINT
- T50 HR HORIZONTAL FLASHING, BLACK POWDERCOATED FINISH, ADHESIVE FIXING TO TOP EDGE OF THE EQUITONE FIBER CEMENT PANEL, BY SYMONITE
- SRUCTURAL TIMBER NOG TO NZS3604 PRIOR INSTALLATION, FIXED WITH MINIMUM 3 NAILS, BY OTHERS
- SCREW FIXING, BY SYMONITE
- FIXING INTO TIMBER WITH SS HEX TEK T17 TIP SCREW 10g x 35 mm @ 400 CRS max, BY SYMONITE
- T50JC ALUM. RAIL, MILL FINISH, CONTINUOUS VERTICAL, BY SYMONITE
- BUTYL TAPE 50mm MIN COVER ON EACH SIDE, BY OTHERS
- FOLDED METAL FLASHING TO SUIT, BY OTHERS
- CONTINUOUS BUTYL TAPE, 35mm MIN COVER ON THE FLASHING, BY SYMONITE
- BUTYL TAPE DRESSED OVER, BY OTHERS
- FOLDED METAL FLASHING 60mm MIN COVER ON EACH SIDE, BY OTHERS
- SEALANT ON PEF ROD, BY SYMONITE
- PANEL TACK STRUCTURAL ADHESIVE BY SYMONITE

SYMONITE

DRAWING TITLE

INTERSTOREY HORIZONTAL JOINT DETAIL

DRAWING STATUS

**ARCHITECTURAL
RESOURCE**

SHEET NO.

04

ISSUE

A

SCALE: 1:2

DATE: MAY 2019

EQUITONE SYSTEM (mechanical fixings)

CONTINUOUS FLASHING TAPE TO THE WINDOW HEAD FLASHING, BY OTHERS

LINE OF HEAD FLASHING STOPEND, BY OTHERS

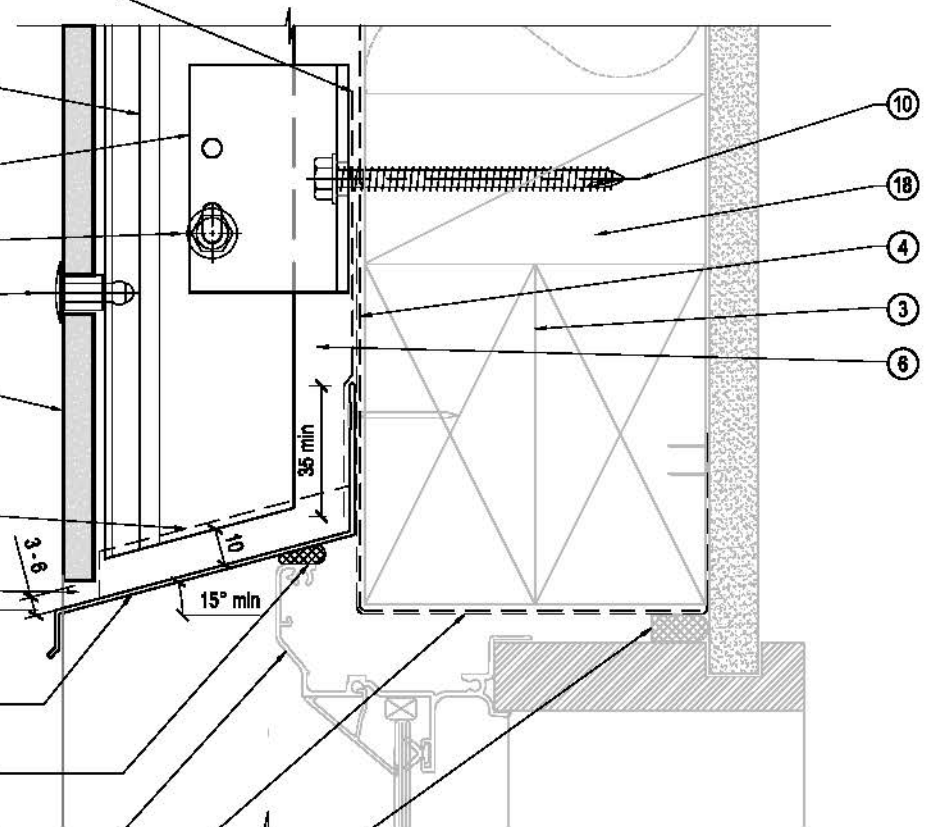
METAL FOLDED WINDOW HEAD FLASHING, BY OTHERS

SIKA FLEX AT FACADE WEATHER SEALANT FOR VERY HIGH AND ABOVE WIND ZONE, BY OTHERS

WINDOW PROFILE BY OTHERS TO BE SELECTED TO ACHIEVE COVER SHOWN IN DETAILS

WALL UNDERLAY DRESSED INTO OPENING WITH FLEXIBLE FLASHING TAPE INSTALLED OVER WRAP TO CORNERS AT HEAD, BY OTHERS

CONTINUOUS AIR SEAL, BY OTHERS



NOTES / SPECIFICATION :

1. DRAINAGE AND VENTILATION SLOT
2. INSULATION IF REQUIRED, BY OTHERS
3. FRAMING TO NZS3804, BY OTHERS
4. AIR BARRIER (RIGID OR FLEXIBLE WALL UNDERLAY), BY OTHERS
5. EQUITONE 8MM THICK FIBRE CEMENT PANEL, BY SYMONITE
6. DRAINED AND VENTILATED CAVITY
7. T50BR ALUMINIUM MILL FINISH CLADDING SUPPORT BRACKET OVER BUTYL PAD (MIN 2 PER RAIL, SPACED @ 800mm CRS MAX), BY SYMONITE
8. T50VR ALUMINIUM BLACK POWDERCOATED VERTICAL SUPPORT RAIL (SPACED @ 800mm CRS MAX), BY SYMONITE
9. T50VRI ALUMINIUM MILL FINISH VERTICAL INTERMEDIATE SUPPORT RAIL (SPACED @ 800mm CRS MAX), BY SYMONITE
10. SS HEX TEK T17 TIP SCREW 14g x 75 mm, BY SYMONITE
11. SS HEX TEK SDS TIP SCREW 14g x 25 mm, BY SYMONITE
12. PROPRIETARY STAINLESS STEEL 4.8 mm RIVET POWDERCOATED OR STAINLESS STEEL FINISH (MIN 2 PER SHEET, SPACED @ 600mm CRS MAX), BY SYMONITE
13. PROPRIETARY BLACK PVC FOAM TAPE 8x3mm, CONTINUOUS VERTICAL, BY SYMONITE
14. CORNER CLIP PROFILE, FIXED WITH STAINLESS STEEL S/ TAP PH 8g x 12mm (min 2 PER RAIL), BY SYMONITE
15. ALLU/ALU. 1, 4 CSK POP-RIVET (min 2 PER RAIL, SPACED @ 600mm CRS MAX), BY SYMONITE
16. 10mm NEGATIVE JOINT
17. T50 HR HORIZONTAL FLASHING, BLACK POWDERCOATED FINISH, ADHESIVE FIXING TO TOP EDGE OF THE EQUITONE FIBRE CEMENT PANEL, BY SYMONITE
18. STRUCTURAL TIMBER NOG TO NZS3804 PRIOR INSTALLATION, FIXED WITH MINIMUM 3 NAILS, BY OTHERS
19. SCREW FIXING, BY SYMONITE
20. FIXING INTO TIMBER WITH SS HEX TEK T17 TIP SCREW 10g x 35 mm @ 400 CRS max, BY SYMONITE
21. T50JC ALUM. RAIL, MILL FINISH, CONTINUOUS VERTICAL, BY SYMONITE
22. BUTYL TAPE 50mm MIN COVER ON EACH SIDE, BY OTHERS
23. FOLDED METAL FLASHING TO SUIT, BY OTHERS
24. CONTINUOUS BUTYL TAPE, 35mm MIN COVER ON THE FLASHING, BY SYMONITE
25. BUTYL TAPE DRESSED OVER, BY OTHERS
26. FOLDED METAL FLASHING 80mm MIN COVER ON EACH SIDE, BY OTHERS
27. SEALANT ON PEF ROD, BY SYMONITE
28. PANEL TACK STRUCTURAL ADHESIVE BY SYMONITE

SYMONITE

RESIDENTIAL WINDOW HEAD DETAIL

ARCHITECTURAL
RESOURCE

SCALE 1:2

05

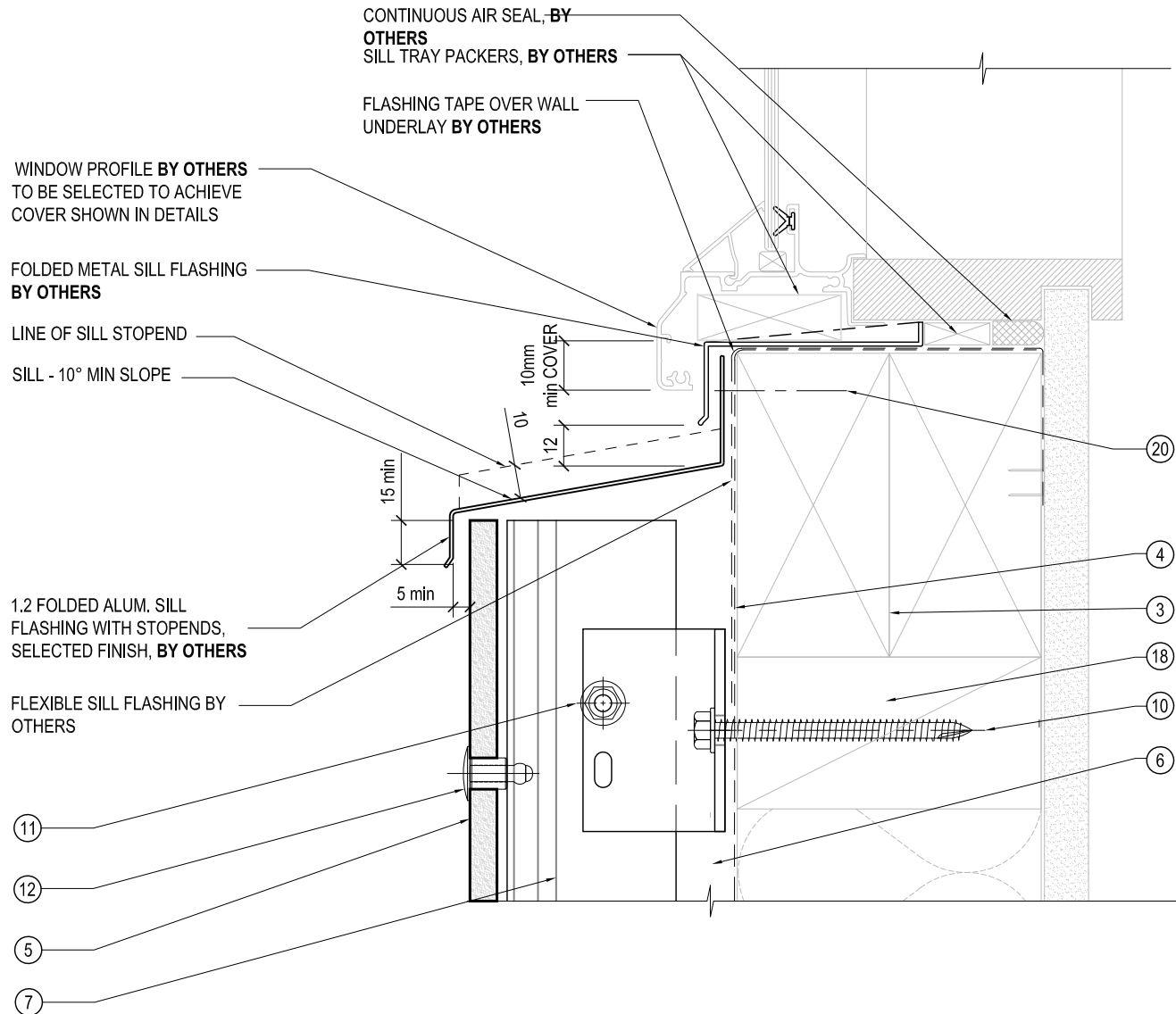
A

DATE MAY 2019

EQUITONE SYSTEM (mechanical fixings)

NOTES / SPECIFICATION :

- DRAINAGE AND VENTILATION SLOT
- INSULATION IF REQUIRED, BY OTHERS
- FRAMING TO NZS3604, BY OTHERS
- AIR BARRIER (RIGID OR FLEXIBLE WALL UNDERLAY), BY OTHERS
- EQUITONE 8MM THICK FIBRE CEMENT PANEL, BY SYMONITE
- DRAINED AND VENTILATED CAVITY
- T50BR ALUMINIUM MILL FINISH CLADDING SUPPORT BRACKET OVER BUTYL PAD (MIN 2 PER RAIL, SPACED @ 800mm CRS MAX), BY SYMONITE
- T50VR ALUMINIUM BLACK POWDERCOATED VERTICAL SUPPORT RAIL (SPACED @ 600mm CRS MAX), BY SYMONITE
- T50VRI ALUMINIUM MILL FINISH VERTICAL INTERMEDIATE SUPPORT RAIL (SPACED @ 600mm CRS MAX), BY SYMONITE
- SS HEX TEK T17 TIP SCREW 14g x 75 mm, BY SYMONITE
- SS HEX TEK SDS TIP SCREW 14g x 25 mm, BY SYMONITE
- PROPRIETARY STAINLESS STEEL 4.8 mm RIVET POWDERCOATED OR STAINLESS STEEL FINISH (MIN 2 PER SHEET, SPACED @ 600mm CRS MAX), BY SYMONITE
- PROPRIETARY BLACK PVC FOAM TAPE 9x3mm, CONTINUOUS VERTICAL, BY SYMONITE
- CORNER CLIP PROFILE, FIXED WITH STAINLESS STEEL S/ TAP PH 8g x 12mm (min 2 PER RAIL), BY SYMONITE
- ALU./ALU. 1. 4 CSK POP-RIVET (min 2 PER RAIL, SPACED @ 600mm CRS MAX), BY SYMONITE
- 10mm NEGATIVE JOINT
- T50 HR HORIZONTAL FLASHING, BLACK POWDERCOATED FINISH, ADHESIVE FIXING TO TOP EDGE OF THE EQUITONE FIBER CEMENT PANEL, BY SYMONITE
- SRUCTURAL TIMBER NOG TO NZS3604 PRIOR INSTALLATION, FIXED WITH MINIMUM 3 NAILS, BY OTHERS
- SCREW FIXING, BY SYMONITE
- FIXING INTO TIMBER WITH SS HEX TEK T17 TIP SCREW 10g x 35 mm @ 400 CRS max, BY SYMONITE
- T50JC ALUM. RAIL, MILL FINISH, CONTINUOUS VERTICAL, BY SYMONITE
- BUTYL TAPE 50mm MIN COVER ON EACH SIDE, BY OTHERS
- FOLDED METAL FLASHING TO SUIT, BY OTHERS
- CONTINUOUS BUTYL TAPE, 35mm MIN COVER ON THE FLASHING, BY SYMONITE
- BUTYL TAPE DRESSED OVER, BY OTHERS
- FOLDED METAL FLASHING 60mm MIN COVER ON EACH SIDE, BY OTHERS
- SEALANT ON PEF ROD, BY SYMONITE
- PANEL TACK STRUCTURAL ADHESIVE BY SYMONITE



SYMONITE

DRAWING TITLE

RESIDENTIAL WINDOW SILL DETAIL

DRAWING STATUS

ARCHITECTURAL
RESOURCE

SHEET NO.

06

ISSUE

A

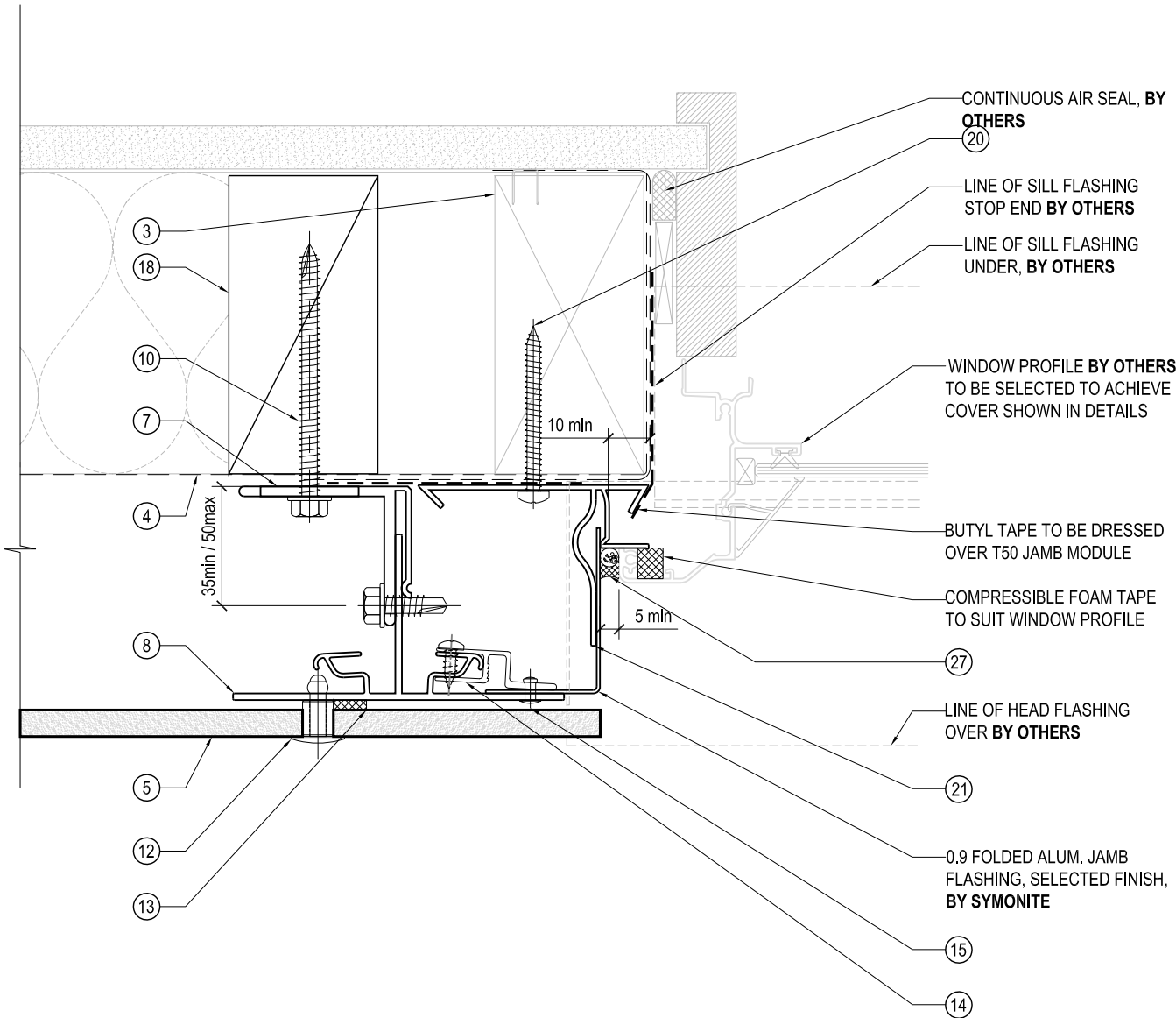
SCALE: 1:2

DATE: MAY 2019

SYMONITE PANELS LIMITED, P.O.Box 101 760, North Shore, Auckland, 72 Elllice Road, Glenfield, Auckland, New Zealand, Telephone 09 443 3896, Facsimile 09 444 2142, Web Site www.symonite.co.nz

Copyright of this drawing shall remain the property of SYMONITE PANELS LTD. No part of this document may be reproduced or transmitted by any means without the prior permission in writing of SYMONITE PANELS LTD.

EQUITONE SYSTEM (mechanical fixings)



NOTES / SPECIFICATION :

- DRAINAGE AND VENTILATION SLOT
- INSULATION IF REQUIRED, BY OTHERS
- FRAMING TO NZS3604, BY OTHERS
- AIR BARRIER (RIGID OR FLEXIBLE WALL UNDERLAY), BY OTHERS
- EQUITONE 8MM THICK FIBRE CEMENT PANEL, BY SYMONITE
- DRAINED AND VENTILATED CAVITY
- T50BR ALUMINIUM MILL FINISH CLADDING SUPPORT BRACKET OVER BUTYL PAD (MIN 2 PER RAIL, SPACED @ 800mm CRS MAX), BY SYMONITE
- T50VR ALUMINIUM BLACK POWDERCOATED VERTICAL SUPPORT RAIL (SPACED @ 600mm CRS MAX), BY SYMONITE
- T50VRI ALUMINIUM MILL FINISH VERTICAL INTERMEDIATE SUPPORT RAIL (SPACED @ 600mm CRS MAX), BY SYMONITE
- SS HEX TEK T17 TIP SCREW 14g x 75 mm, BY SYMONITE
- SS HEX TEK SDS TIP SCREW 14g x 25 mm, BY SYMONITE
- PROPRIETARY STAINLESS STEEL 4.8 mm RIVET POWDERCOATED OR STAINLESS STEEL FINISH (MIN 2 PER SHEET, SPACED @ 600mm CRS MAX), BY SYMONITE
- PROPRIETARY BLACK PVC FOAM TAPE 9x3mm, CONTINUOUS VERTICAL, BY SYMONITE
- CORNER CLIP PROFILE, FIXED WITH STAINLESS STEEL S/ TAP PH 8g x 12mm (min 2 PER RAIL), BY SYMONITE
- ALU./ALU. 1. 4 CSK POP-RIVET (min 2 PER RAIL, SPACED @ 600mm CRS MAX), BY SYMONITE
- 10mm NEGATIVE JOINT
- T50 HR HORIZONTAL FLASHING, BLACK POWDERCOATED FINISH, ADHESIVE FIXING TO TOP EDGE OF THE EQUITONE FIBER CEMENT PANEL, BY SYMONITE
- SRUCTURAL TIMBER NOG TO NZS3604 PRIOR INSTALLATION, FIXED WITH MINIMUM 3 NAILS, BY OTHERS
- SCREW FIXING, BY SYMONITE
- FIXING INTO TIMBER WITH SS HEX TEK T17 TIP SCREW 10g x 35 mm @ 400 CRS max, BY SYMONITE
- T50JC ALUM. RAIL, MILL FINISH, CONTINUOUS VERTICAL, BY SYMONITE
- BUTYL TAPE 50mm MIN COVER ON EACH SIDE, BY OTHERS
- FOLDED METAL FLASHING TO SUIT, BY OTHERS
- CONTINUOUS BUTYL TAPE, 35mm MIN COVER ON THE FLASHING, BY SYMONITE
- BUTYL TAPE DRESSED OVER, BY OTHERS
- FOLDED METAL FLASHING 60mm MIN COVER ON EACH SIDE, BY OTHERS
- SEALANT ON PEF ROD, BY SYMONITE
- PANEL TACK STRUCTURAL ADHESIVE BY SYMONITE

SYMONITE

RESIDENTIAL WINDOW JAMB DETAIL

ARCHITECTURAL
RESOURCE

SCALE: 1:2

SHEET NO.

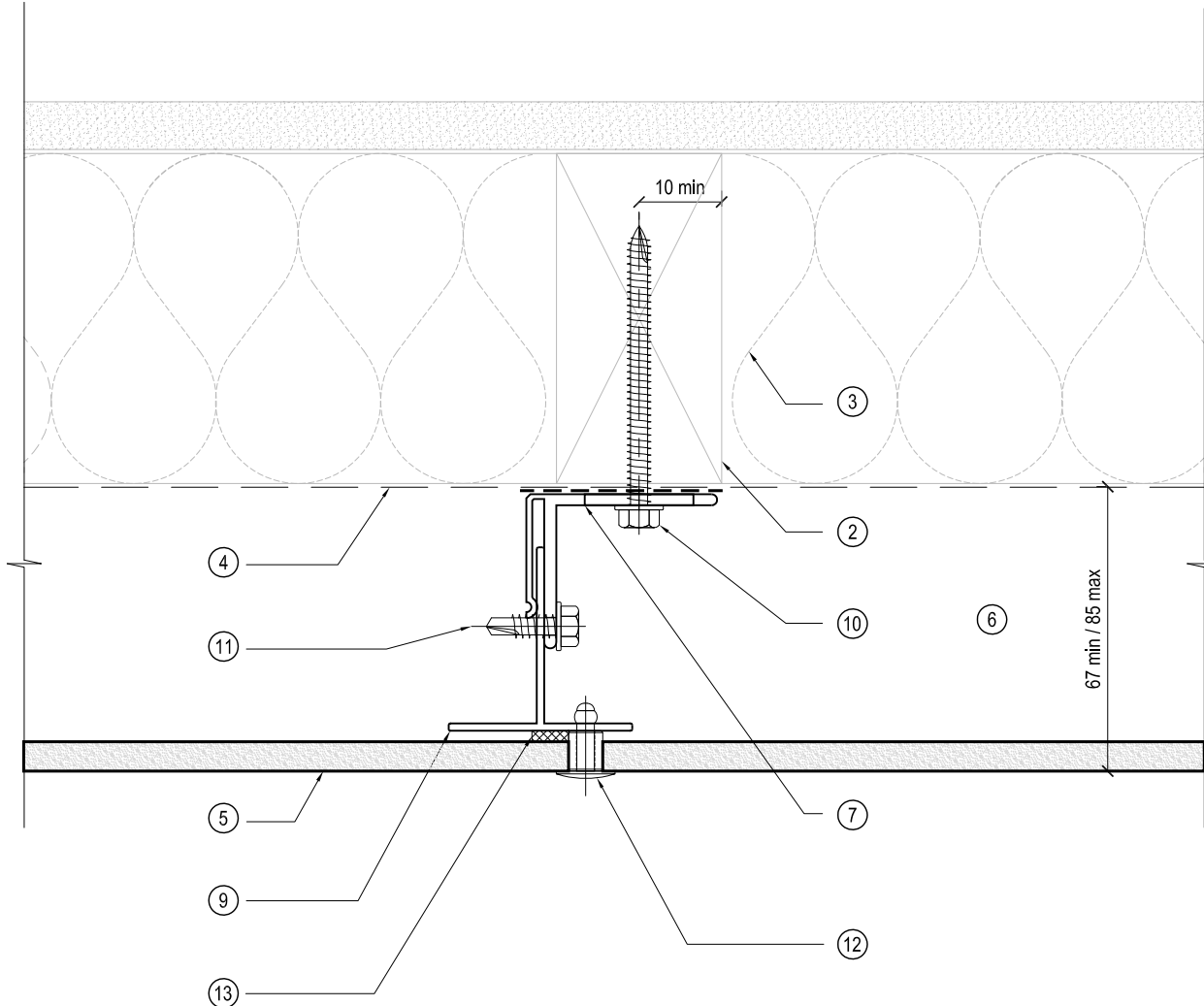
07

ISSUE

A

DATE: MAY 2019

EQUITONE SYSTEM (mechanical fixings)



NOTES / SPECIFICATION :

1. DRAINAGE AND VENTILATION SLOT
2. INSULATION IF REQUIRED, BY OTHERS
3. FRAMING TO NZS3604, BY OTHERS
4. AIR BARRIER (RIGID OR FLEXIBLE WALL UNDERLAY), BY OTHERS
5. EQUITONE 8MM THICK FIBRE CEMENT PANEL, BY SYMONITE
6. DRAINED AND VENTILATED CAVITY
7. T50BR ALUMINIUM MILL FINISH CLADDING SUPPORT BRACKET OVER BUTYL PAD (MIN 2 PER RAIL, SPACED @ 800mm CRS MAX), BY SYMONITE
8. T50VR ALUMINIUM BLACK POWDERCOATED VERTICAL SUPPORT RAIL (SPACED @ 600mm CRS MAX), BY SYMONITE
9. T50VRI ALUMINIUM MILL FINISH VERTICAL INTERMEDIATE SUPPORT RAIL (SPACED @ 600mm CRS MAX), BY SYMONITE
10. SS HEX TEK T17 TIP SCREW 14g x 75 mm, BY SYMONITE
11. SS HEX TEK SDS TIP SCREW 14g x 25 mm, BY SYMONITE
12. PROPRIETARY STAINLESS STEEL 4.8 mm RIVET POWDERCOATED OR STAINLESS STEEL FINISH (MIN 2 PER SHEET, SPACED @ 600mm CRS MAX), BY SYMONITE
13. PROPRIETARY BLACK PVC FOAM TAPE 9x3mm, CONTINUOUS VERTICAL, BY SYMONITE
14. CORNER CLIP PROFILE, FIXED WITH STAINLESS STEEL S/ TAP PH 8g x 12mm (min 2 PER RAIL), BY SYMONITE
15. ALU./ALU. '1. 4 CSK POP-RIVET (min 2 PER RAIL, SPACED @ 600mm CRS MAX), BY SYMONITE
16. 10mm NEGATIVE JOINT
17. T50 HR HORIZONTAL FLASHING, BLACK POWDERCOATED FINISH, ADHESIVE FIXING TO TOP EDGE OF THE EQUITONE FIBER CEMENT PANEL, BY SYMONITE
18. STRUCTURAL TIMBER NOG TO NZS3604 PRIOR INSTALLATION, FIXED WITH MINIMUM 3 NAILS, BY OTHERS
19. SCREW FIXING, BY SYMONITE
20. FIXING INTO TIMBER WITH SS HEX TEK T17 TIP SCREW 10g x 35 mm @ 400 CRS max, BY SYMONITE
21. T50JC ALUM. RAIL, MILL FINISH, CONTINUOUS VERTICAL, BY SYMONITE
22. BUTYL TAPE 50mm MIN COVER ON EACH SIDE, BY OTHERS
23. FOLDED METAL FLASHING TO SUIT, BY OTHERS
24. CONTINUOUS BUTYL TAPE, 35mm MIN COVER ON THE FLASHING, BY SYMONITE
25. BUTYL TAPE DRESSED OVER, BY OTHERS
26. FOLDED METAL FLASHING 60mm MIN COVER ON EACH SIDE, BY OTHERS
27. SEALANT ON PEF ROD, BY SYMONITE
28. PANEL TACK STRUCTURAL ADHESIVE BY SYMONITE

SYMONITE

STANDARD INTERMEDIATE SUPPORT DETAIL

DRAWING STATUS
<input type="checkbox"/> Not Started
<input type="checkbox"/> In Progress
<input type="checkbox"/> Completed

ARCHITECTURAL RESOURCE

SHEET NO.

08

ISSUE

A

SCALE: 1:2

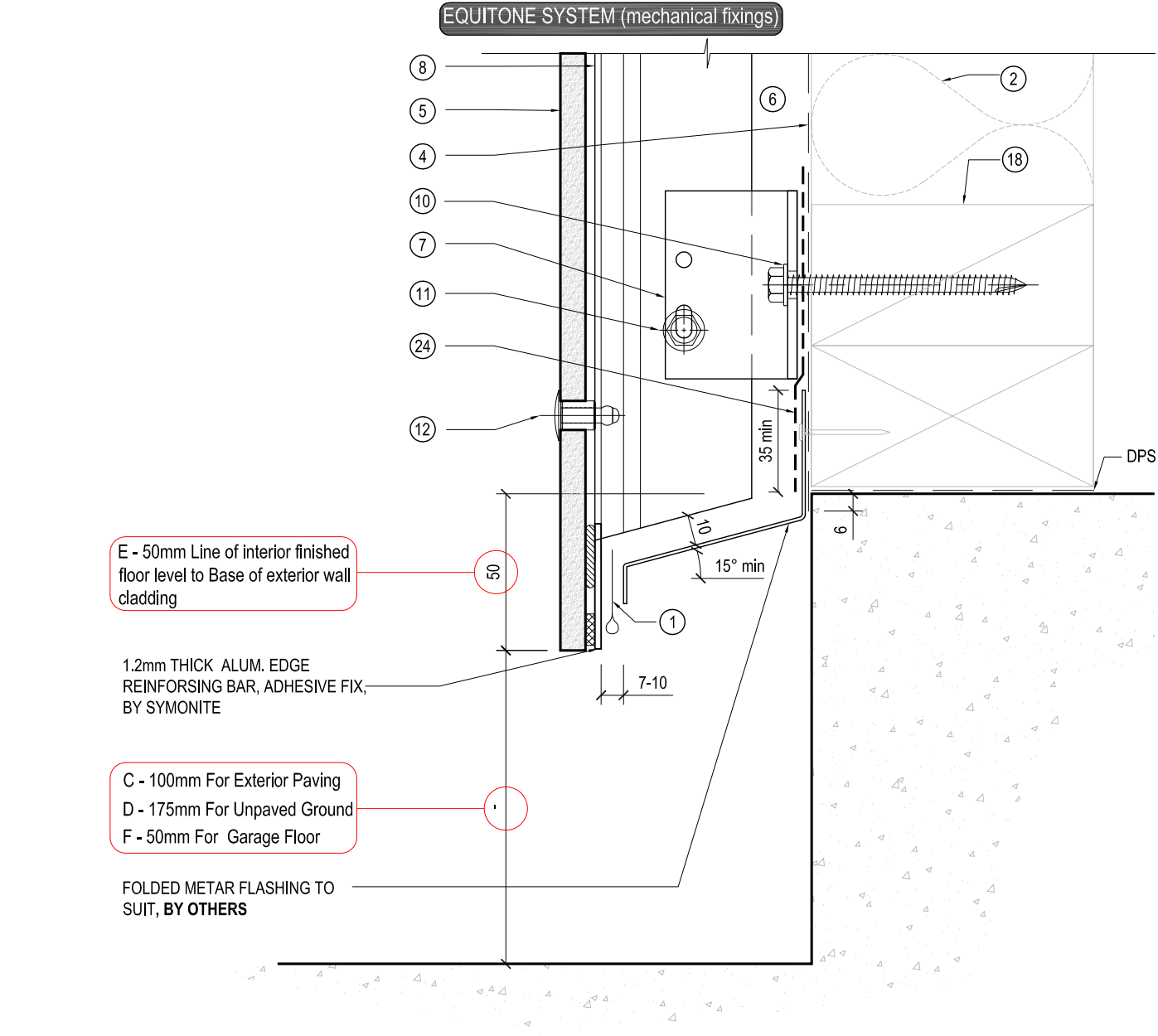
DATE: MAY 2019

SYMONITE PANELS LIMITED, P.O.Box 101 760, North Shore, Auckland, 72 Ellice Road, Glenfield, Auckland, New Zealand, Telephone 09 443 3896, Facsimile 09 444 2142, Web Site www.symonite.co.nz

Copyright © of this drawing shall remain the property of SYMONITE PANELS LTD. No part of this document may be reproduced or transmitted by any means without the prior permission in writing of SYMONITE PANELS LTD.

NOTES / SPECIFICATION :

1. DRAINAGE AND VENTILATION SLOT
2. INSULATION IF REQUIRED, BY OTHERS
3. FRAMING TO NZS3604, BY OTHERS
4. AIR BARRIER (RIGID OR FLEXIBLE WALL UNDERLAY), BY OTHERS
5. EQUITONE 8MM THICK FIBRE CEMENT PANEL, BY SYMONITE
6. DRAINED AND VENTILATED CAVITY
7. T50BR ALUMINIUM MILL FINISH CLADDING SUPPORT BRACKET OVER BUTYL PAD (MIN 2 PER RAIL, SPACED @ 800mm CRS MAX), BY SYMONITE
8. T50VR ALUMINIUM BLACK POWDERCOATED VERTICAL SUPPORT RAIL (SPACED @ 600mm CRS MAX), BY SYMONITE
9. T50VRI ALUMINIUM MILL FINISH VERTICAL INTERMEDIATE SUPPORT RAIL (SPACED @ 600mm CRS MAX), BY SYMONITE
10. SS HEX TEK T17 TIP SCREW 14g x 75 mm, BY SYMONITE
11. SS HEX TEK SDS TIP SCREW 14g x 25 mm, BY SYMONITE
12. PROPRIETARY STAINLESS STEEL 4.8 mm RIVET POWDERCOATED OR STAINLESS STEEL FINISH (MIN 2 PER SHEET, SPACED @ 600mm CRS MAX), BY SYMONITE
13. PROPRIETARY BLACK PVC FOAM TAPE 9x3mm, CONTINUOUS VERTICAL, BY SYMONITE
14. CORNER CLIP PROFILE, FIXED WITH STAINLESS STEEL S/ TAP PH 8g x 12mm (min 2 PER RAIL), BY SYMONITE
15. ALU./ALU. 1:4 CSK POP-RIVET (min 2 PER RAIL, SPACED @ 600mm CRS MAX), BY SYMONITE
16. 10mm NEGATIVE JOINT
17. T50 HR HORIZONTAL FLASHING, BLACK POWDERCOATED FINISH, ADHESIVE FIXING TO TOP EDGE OF THE EQUITONE FIBRE CEMENT PANEL, BY SYMONITE
18. STRUCTURAL TIMBER NOG TO NZS3604 PRIOR INSTALLATION, FIXED WITH MINIMUM 3 NAILS, BY OTHERS
19. SCREW FIXING, BY SYMONITE
20. FIXING INTO TIMBER WITH SS HEX TEK T17 TIP SCREW 10g x 35 mm @ 400 CRS max, BY SYMONITE
21. T50JC ALUM. RAIL, MILL FINISH, CONTINUOUS VERTICAL, BY SYMONITE
22. BUTYL TAPE 50mm MIN COVER ON EACH SIDE, BY OTHERS
23. FOLDED METAL FLASHING TO SUIT, BY OTHERS
24. CONTINUOUS BUTYL TAPE, 35mm MIN COVER ON THE FLASHING, BY SYMONITE
25. BUTYL TAPE DRESSED OVER, BY OTHERS
26. FOLDED METAL FLASHING 60mm MIN COVER ON EACH SIDE, BY OTHERS
27. SEALANT ON PEF ROD, BY SYMONITE
28. PANEL TACK STRUCTURAL ADHESIVE BY SYMONITE



SYMONITE

SYMONITE PANELS LIMITED, P.O.Box 101 760, North Shore, Auckland, 72 Elllice Road, Glenfield, Auckland, New Zealand, Telephone 09 443 3896, Facsimile 09 444 2142, Web Site www.symonite.co.nz

Copyright of this drawing shall remain the property of SYMONITE PANELS LTD. No part of this document may be reproduced or transmitted by any means without the prior permission in writing of SYMONITE PANELS LTD.

DRAWING TITLE

BASE CLEARANCE DETAIL

DRAWING STATUS

**ARCHITECTURAL
RESOURCE**

SHEET NO.

09

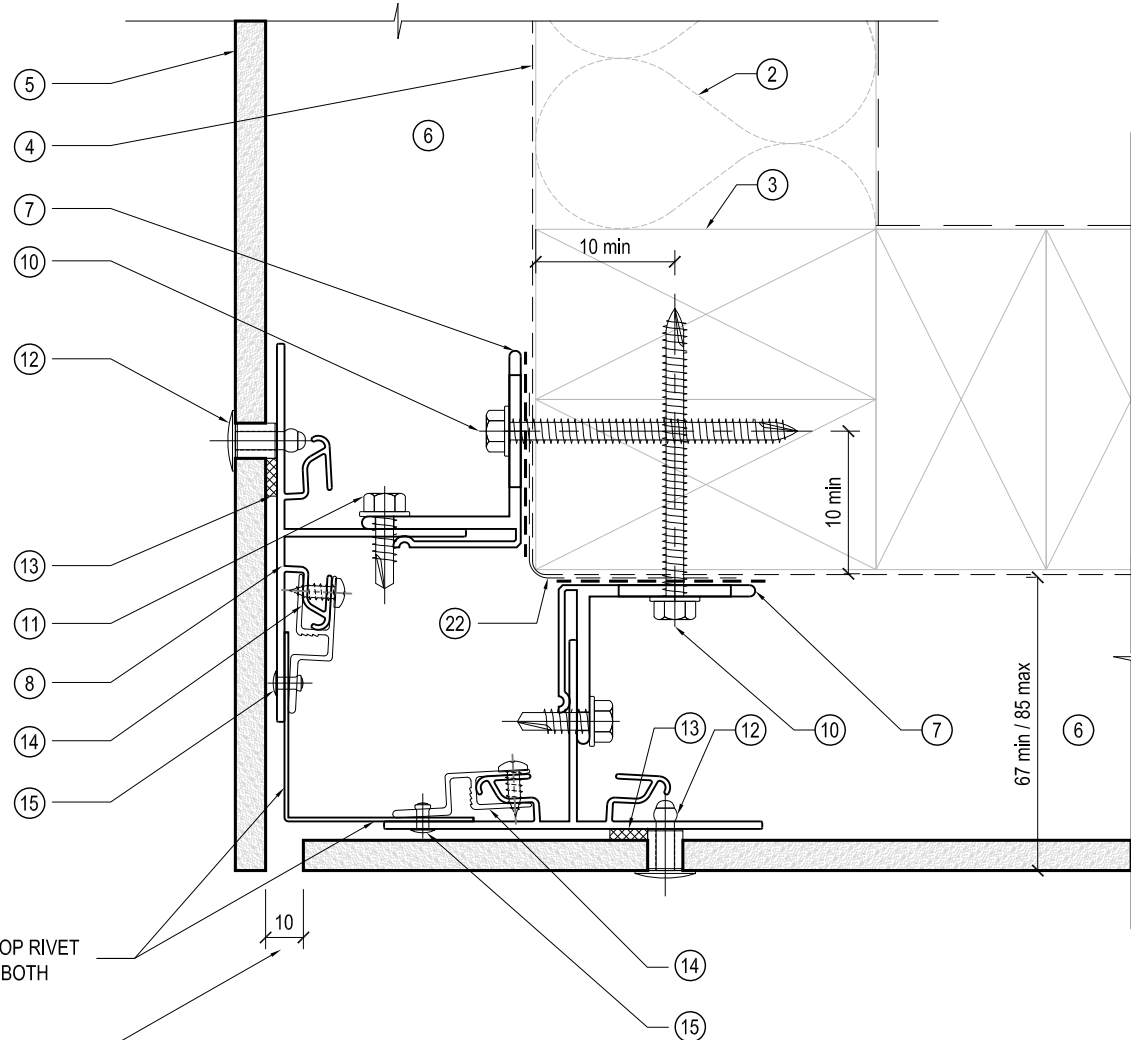
ISSUE

A

SCALE: 1:2

DATE: MAY 2019

EQUITONE SYSTEM (mechanical fixings)



50x50 ALUM. ANGLE , POP RIVET
FIXED TO THE T50S AT BOTH
ENDS, BY SYMONITE

10mm NEGATIVE JOINT

NOTES / SPECIFICATION :

- DRAINAGE AND VENTILATION SLOT
- INSULATION IF REQUIRED, BY OTHERS
- FRAMING TO NZS3604, BY OTHERS
- AIR BARRIER (RIGID OR FLEXIBLE WALL UNDERLAY), BY OTHERS
- EQUITONE 8MM THICK FIBRE CEMENT PANEL, BY SYMONITE
- DAINED AND VENTILATED CAVITY
- T50BR ALUMINIUM MILL FINISH CLADDING SUPPORT BRACKET OVER BUTYL PAD (MIN 2 PER RAIL, SPACED @ 800mm CRS MAX), BY SYMONITE
- T50VR ALUMINIUM BLACK POWDERCOATED VERTICAL SUPPORT RAIL (SPACED @ 600mm CRS MAX), BY SYMONITE
- T50VRI ALUMINIUM MILL FINISH VERTICAL INTERMEDIATE SUPPORT RAIL (SPACED @ 600mm CRS MAX), BY SYMONITE
- SS HEX TEK T17 TIP SCREW 14g x 75 mm, BY SYMONITE
- SS HEX TEK SDS TIP SCREW 14g x 25 mm, BY SYMONITE
- PROPRIETARY STAINLESS STEEL 4.8 mm RIVET POWDERCOATED OR STAINLESS STEEL FINISH (MIN 2 PER SHEET, SPACED @ 600mm CRS MAX), BY SYMONITE
- PROPRIETARY BLACK PVC FOAM TAPE 9x3mm, CONTINUOUS VERTICAL, BY SYMONITE
- CORNER CLIP PROFILE, FIXED WITH STAINLESS STEEL S/ TAP PH 8g x 12mm (min 2 PER RAIL), BY SYMONITE
- ALU./ALU. 1. 4 CSK POP-RIVET (min 2 PER RAIL, SPACED @ 600mm CRS MAX), BY SYMONITE
- 10mm NEGATIVE JOINT
- T50 HR HORIZONTAL FLASHING, BLACK POWDERCOATED FINISH, ADHESIVE FIXING TO TOP EDGE OF THE EQUITONE FIBER CEMENT PANEL, BY SYMONITE
- SRUCTURAL TIMBER NOG TO NZS3604 PRIOR INSTALLATION, FIXED WITH MINIMUM 3 NAILS, BY OTHERS
- SCREW FIXING, BY SYMONITE
- FIXING INTO TIMBER WITH SS HEX TEK T17 TIP SCREW 10g x 35 mm @ 400 CRS max, BY SYMONITE
- T50JC ALUM. RAIL, MILL FINISH, CONTINUOUS VERTICAL, BY SYMONITE
- BUTYL TAPE 50mm MIN COVER ON EACH SIDE, BY OTHERS
- FOLDED METAL FLASHING TO SUIT, BY OTHERS
- CONTINUOUS BUTYL TAPE, 35mm MIN COVER ON THE FLASHING, BY SYMONITE
- BUTYL TAPE DRESSED OVER, BY OTHERS
- FOLDED METAL FLASHING 60mm MIN COVER ON EACH SIDE, BY OTHERS
- SEALANT ON PEF ROD, BY SYMONITE
- PANEL TACK STRUCTURAL ADHESIVE BY SYMONITE

SYMONITE

SYMONITE PANELS LIMITED, P.O.Box 101 760, North Shore, Auckland, 72 Elllice Road, Glenfield, Auckland, New Zealand, Telephone 09 443 3896, Facsimile 09 444 2142, Web Site www.symonite.co.nz

Copyright of this drawing shall remain the property of SYMONITE PANELS LTD. No part of this document may be reproduced or transmitted by any means without the prior permission in writing of SYMONITE PANELS LTD.

DRAWING TITLE

EXTERNAL CORNER DETAIL

DRAWING STATUS

ARCHITECTURAL
RESOURCE

SHEET NO.

10

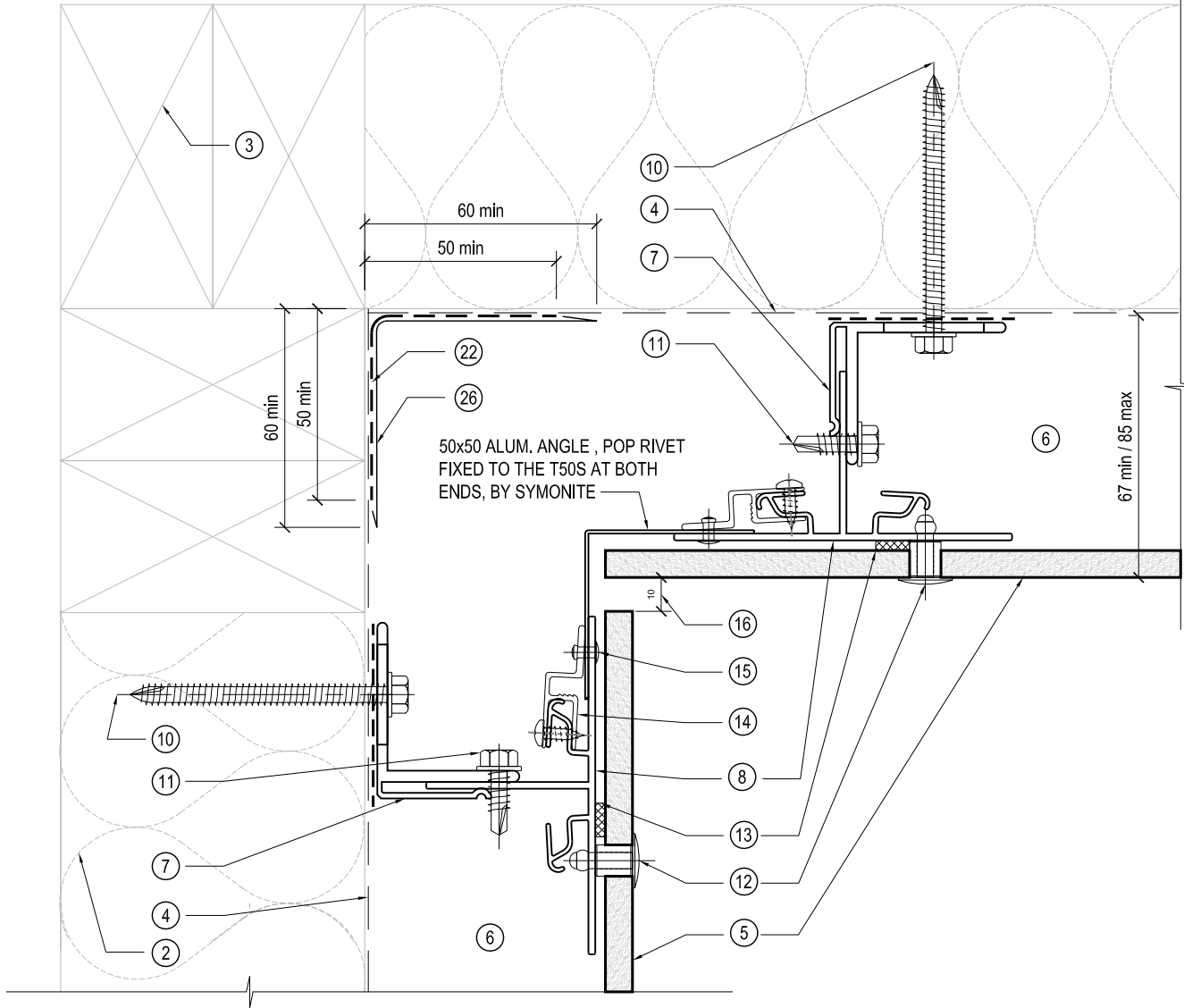
ISSUE

A

SCALE: 1:2

DATE: MAY 2019

EQUITONE SYSTEM (mechanical fixings)



NOTES / SPECIFICATION :

1. DRAINAGE AND VENTILATION SLOT
2. INSULATION IF REQUIRED, BY OTHERS
3. FRAMING TO NZS3604, BY OTHERS
4. AIR BARRIER (RIGID OR FLEXIBLE WALL UNDERLAY), BY OTHERS
5. EQUITONE 8MM THICK FIBRE CEMENT PANEL, BY SYMONITE
6. DROWNED AND VENTILATED CAVITY
7. T50BR ALUMINIUM MILL FINISH CLADDING SUPPORT BRACKET OVER BUTYL PAD (MIN 2 PER RAIL, SPACED @ 800mm CRS MAX), BY SYMONITE
8. T50VR ALUMINIUM BLACK POWDERCOATED VERTICAL SUPPORT RAIL (SPACED @ 600mm CRS MAX), BY SYMONITE
9. T50VRI ALUMINIUM MILL FINISH VERTICAL INTERMEDIATE SUPPORT RAIL (SPACED @ 600mm CRS MAX), BY SYMONITE
10. SS HEX TEK T17 TIP SCREW 14g x 75 mm, BY SYMONITE
11. SS HEX TEK SDS TIP SCREW 14g x 25 mm, BY SYMONITE
12. PROPRIETARY STAINLESS STEEL 4.8 mm RIVET POWDERCOATED OR STAINLESS STEEL FINISH (MIN 2 PER SHEET, SPACED @ 600mm CRS MAX), BY SYMONITE
13. PROPRIETARY BLACK PVC FOAM TAPE 9x3mm, CONTINUOUS VERTICAL, BY SYMONITE
14. CORNER CLIP PROFILE, FIXED WITH STAINLESS STEEL S/ TAP PH 8g x 12mm (min 2 PER RAIL), BY SYMONITE
15. ALU/ALU. 1.4 CSK POP-RIVET (min 2 PER RAIL, SPACED @ 600mm CRS MAX), BY SYMONITE
16. 10mm NEGATIVE JOINT
17. T50 HR HORIZONTAL FLASHING, BLACK POWDERCOATED FINISH, ADHESIVE FIXING TO TOP EDGE OF THE EQUITONE FIBER CEMENT PANEL, BY SYMONITE
18. STRUCTURAL TIMBER NOG TO NZS3604 PRIOR INSTALLATION, FIXED WITH MINIMUM 3 NAILS, BY OTHERS
19. SCREW FIXING, BY SYMONITE
20. FIXING INTO TIMBER WITH SS HEX TEK T17 TIP SCREW 10g x 35 mm @ 400 CRS max, BY SYMONITE
21. T50JC ALUM. RAIL, MILL FINISH, CONTINUOUS VERTICAL, BY SYMONITE
22. BUTYL TAPE 50mm MIN COVER ON EACH SIDE, BY OTHERS
23. FOLDED METAL FLASHING TO SUIT, BY OTHERS
24. CONTINUOUS BUTYL TAPE, 35mm MIN COVER ON THE FLASHING, BY SYMONITE
25. BUTYL TAPE DRESSED OVER, BY OTHERS
26. FOLDED METAL FLASHING 60mm MIN COVER ON EACH SIDE, BY OTHERS
27. SEALANT ON PEF ROD, BY SYMONITE
28. PANEL TACK STRUCTURAL ADHESIVE BY SYMONITE

SYMONITE

INTERNAL CORNER DETAIL

ARCHITECTURAL RESOURCE

SCALE: 1:2

SHEET NO.

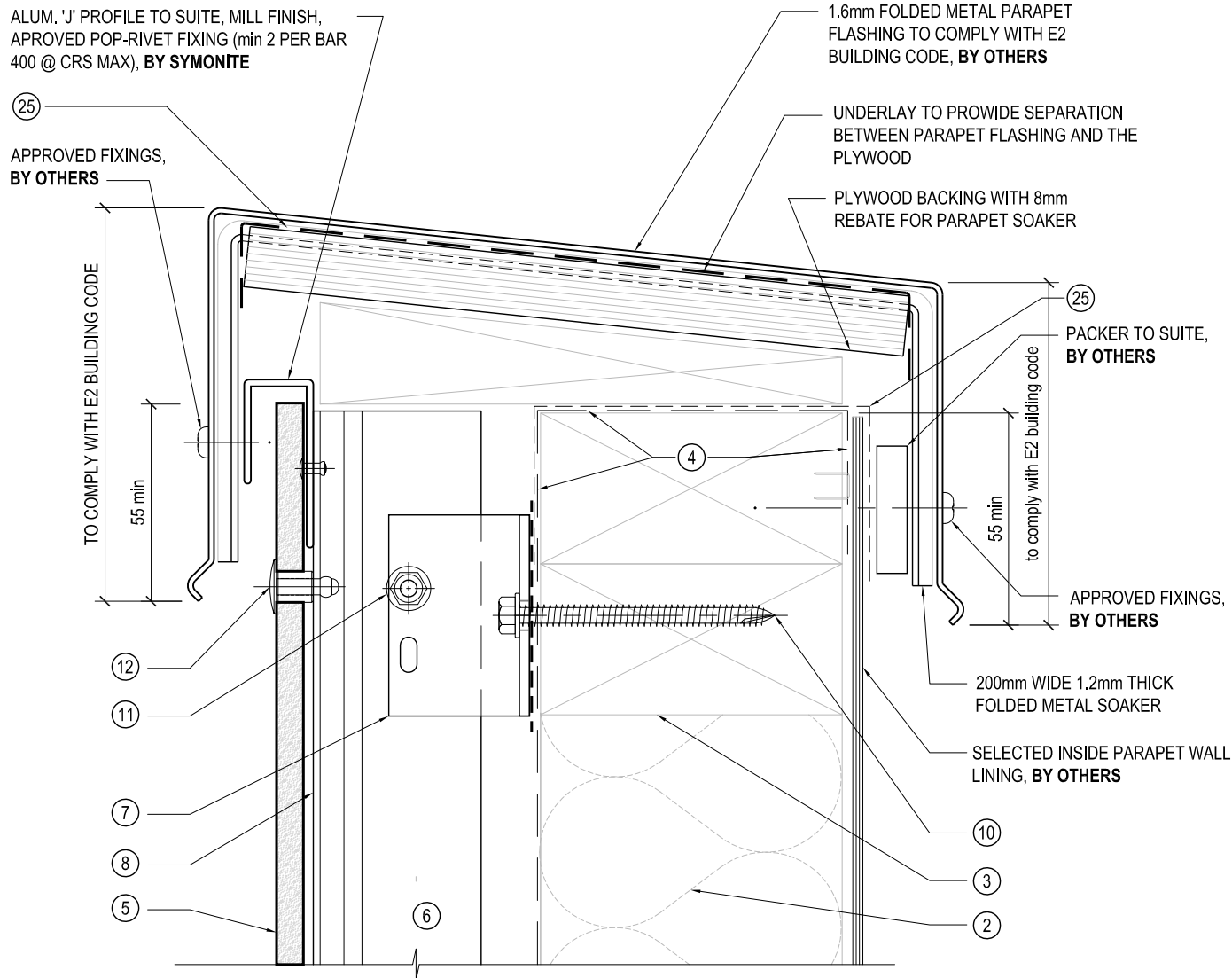
11

ISSUE

A

DATE: MAY 2019

EQUITONE SYSTEM (mechanical fixings)



NOTES / SPECIFICATION :

- DRAINAGE AND VENTILATION SLOT
- INSULATION IF REQUIRED, BY OTHERS
- FRAMING TO NZS3604, BY OTHERS
- AIR BARRIER (RIGID OR FLEXIBLE WALL UNDERLAY), BY OTHERS
- EQUITONE 8MM THICK FIBRE CEMENT PANEL, BY SYMONITE
- DRAINED AND VENTILATED CAVITY
- T50BR ALUMINIUM MILL FINISH CLADDING SUPPORT BRACKET OVER BUTYL PAD (MIN 2 PER RAIL, SPACED @ 800mm CRS MAX), BY SYMONITE
- T50VR ALUMINIUM BLACK POWDERCOATED VERTICAL SUPPORT RAIL (SPACED @ 600mm CRS MAX), BY SYMONITE
- T50VRI ALUMINIUM MILL FINISH VERTICAL INTERMEDIATE SUPPORT RAIL (SPACED @ 600mm CRS MAX), BY SYMONITE
- SS HEX TEK T17 TIP SCREW 14g x 75 mm, BY SYMONITE
- SS HEX TEK SDS TIP SCREW 14g x 25 mm, BY SYMONITE
- PROPRIETARY STAINLESS STEEL 4.8 mm RIVET POWDERCOATED OR STAINLESS STEEL FINISH (MIN 2 PER SHEET, SPACED @ 600mm CRS MAX), BY SYMONITE
- PROPRIETARY BLACK PVC FOAM TAPE 9x3mm, CONTINUOUS VERTICAL, BY SYMONITE
- CORNER CLIP PROFILE, FIXED WITH STAINLESS STEEL S/ TAP PH 8g x 12mm (min 2 PER RAIL), BY SYMONITE
- ALU./ALU. 'L' 4 CSK POP-RIVET (min 2 PER RAIL, SPACED @ 600mm CRS MAX), BY SYMONITE
- 10mm NEGATIVE JOINT
- T50 HR HORIZONTAL FLASHING, BLACK POWDERCOATED FINISH, ADHESIVE FIXING TO TOP EDGE OF THE EQUITONE FIBRE CEMENT PANEL, BY SYMONITE
- STRUCTURAL TIMBER NOG TO NZS3604 PRIOR INSTALLATION, FIXED WITH MINIMUM 3 NAILS, BY OTHERS
- SCREW FIXING, BY SYMONITE
- FIXING INTO TIMBER WITH SS HEX TEK T17 TIP SCREW 10g x 35 mm @ 400 CRS max, BY SYMONITE
- T50JC ALUM. RAIL, MILL FINISH, CONTINUOUS VERTICAL, BY SYMONITE
- BUTYL TAPE 50mm MIN COVER ON EACH SIDE, BY OTHERS
- FOLDED METAL FLASHING TO SUIT, BY OTHERS
- CONTINUOUS BUTYL TAPE, 35mm MIN COVER ON THE FLASHING, BY SYMONITE
- BUTYL TAPE DRESSED OVER, BY OTHERS
- FOLDED METAL FLASHING 60mm MIN COVER ON EACH SIDE, BY OTHERS
- SEALANT ON PEF ROD, BY SYMONITE
- PANEL TACK STRUCTURAL ADHESIVE BY SYMONITE

SYMONITE	DRAWING TITLE	DRAWING STATUS		
	PARAPET DETAIL	ARCHITECTURAL RESOURCE	SHEET NO. 12	ISSUE A
SCALE: 1:2		DATE: MAY 2019		

SYMONITE PANELS LIMITED, P.O.Box 101 760, North Shore, Auckland, 72 Ellice Road, Glenfield, Auckland, New Zealand, Telephone 09 443 3896, Facsimile 09 444 2142, Web Site www.symonite.co.nz

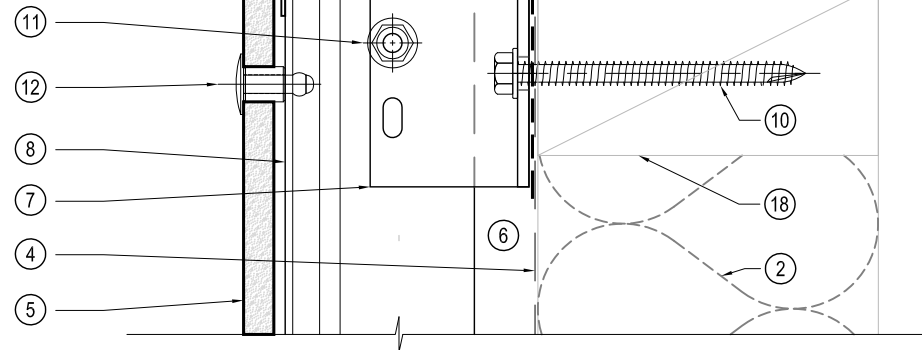
Copyright of this drawing shall remain the property of SYMONITE PANELS LTD. No part of this document may be reproduced or transmitted by any means without the prior permission in writing of SYMONITE PANELS LTD.

EQUITONE SYSTEM (mechanical fixings)

50X50 FOLDED METAL FLASHING TO SUIT, FIXED TO T50 RAILS, BY SYMONITE

PACKERS BY OTHERS

SOFFIT LINING BY OTHERS



NOTES / SPECIFICATION :

- DRAINAGE AND VENTILATION SLOT
- INSULATION IF REQUIRED, BY OTHERS
- FRAMING TO NZS3604, BY OTHERS
- AIR BARRIER (RIGID OR FLEXIBLE WALL UNDERLAY), BY OTHERS
- EQUITONE 8MM THICK FIBRE CEMENT PANEL, BY SYMONITE
- DRAINED AND VENTILATED CAVITY
- T50BR ALUMINIUM MILL FINISH CLADDING SUPPORT BRACKET OVER BUTYL PAD (MIN 2 PER RAIL, SPACED @ 800mm CRS MAX), BY SYMONITE
- T50VR ALUMINIUM BLACK POWDERCOATED VERTICAL SUPPORT RAIL (SPACED @ 600mm CRS MAX), BY SYMONITE
- T50VRI ALUMINIUM MILL FINISH VERTICAL INTERMEDIATE SUPPORT RAIL (SPACED @ 600mm CRS MAX), BY SYMONITE
- SS HEX TEK T17 TIP SCREW 14g x 75 mm, BY SYMONITE
- SS HEX TEK SDS TIP SCREW 14g x 25 mm, BY SYMONITE
- PROPRIETARY STAINLESS STEEL 4.8 mm RIVET POWDERCOATED OR STAINLESS STEEL FINISH (MIN 2 PER SHEET, SPACED @ 600mm CRS MAX), BY SYMONITE
- PROPRIETARY BLACK PVC FOAM TAPE 9x3mm, CONTINUOUS VERTICAL, BY SYMONITE
- CORNER CLIP PROFILE, FIXED WITH STAINLESS STEEL S/ TAP PH 8g x 12mm (min 2 PER RAIL), BY SYMONITE
- ALU./ALU. 1.4 CSK POP-RIVET (min 2 PER RAIL, SPACED @ 600mm CRS MAX), BY SYMONITE
- 10mm NEGATIVE JOINT
- T50 HR HORIZONTAL FLASHING, BLACK POWDERCOATED FINISH, ADHESIVE FIXING TO TOP EDGE OF THE EQUITONE FIBRE CEMENT PANEL, BY SYMONITE
- SRUCTURAL TIMBER NOG TO NZS3604 PRIOR INSTALLATION, FIXED WITH MINIMUM 3 NAILS, BY OTHERS
- SCREW FIXING, BY SYMONITE
- FIXING INTO TIMBER WITH SS HEX TEK T17 TIP SCREW 10g x 35 mm @ 400 CRS max, BY SYMONITE
- T50JC ALUM. RAIL, MILL FINISH, CONTINUOUS VERTICAL, BY SYMONITE
- BUTYL TAPE 50mm MIN COVER ON EACH SIDE, BY OTHERS
- FOLDED METAL FLASHING TO SUIT, BY OTHERS
- CONTINUOUS BUTYL TAPE, 35mm MIN COVER ON THE FLASHING, BY SYMONITE
- BUTYL TAPE DRESSED OVER, BY OTHERS
- FOLDED METAL FLASHING 60mm MIN COVER ON EACH SIDE, BY OTHERS
- SEALANT ON PEF ROD, BY SYMONITE
- PANEL TACK STRUCTURAL ADHESIVE BY SYMONITE

SYMONITE

DRAWING TITLE

WALL AND SOFFIT DETAIL

DRAWING STATUS

**ARCHITECTURAL
RESOURCE**

SHEET NO.

13

ISSUE

A

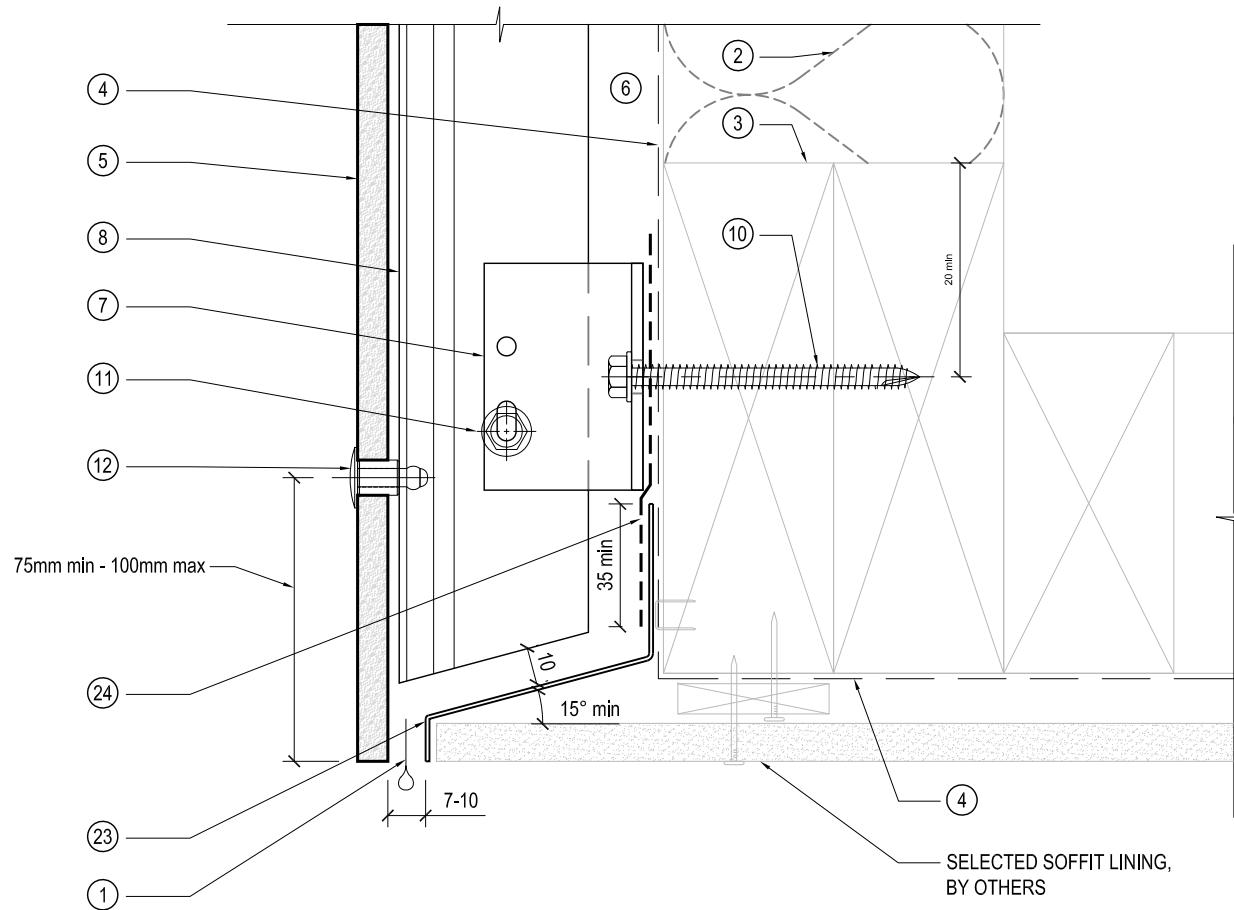
SCALE: 1:2

DATE: MAY 2019

SYMONITE PANELS LIMITED, P.O.Box 101 760, North Shore, Auckland, 72 Elllice Road, Glenfield, Auckland, New Zealand, Telephone 09 443 3896, Facsimile 09 444 2142, Web Site www.symonite.co.nz

Copyright of this drawing shall remain the property of SYMONITE PANELS LTD. No part of this document may be reproduced or transmitted by any means without the prior permission in writing of SYMONITE PANELS LTD.

EQUITONE SYSTEM (mechanical fixings)



NOTES / SPECIFICATION :

- DRAINAGE AND VENTILATION SLOT
- INSULATION IF REQUIRED, BY OTHERS
- FRAMING TO NZS3604, BY OTHERS
- AIR BARRIER (RIGID OR FLEXIBLE WALL UNDERLAY), BY OTHERS
- EQUITONE 8MM THICK FIBRE CEMENT PANEL, BY SYMONITE
- DRAINED AND VENTILATED CAVITY
- T50BR ALUMINIUM MILL FINISH CLADDING SUPPORT BRACKET OVER BUTYL PAD (MIN 2 PER RAIL, SPACED @ 800mm CRS MAX), BY SYMONITE
- T50VR ALUMINIUM BLACK POWDERCOATED VERTICAL SUPPORT RAIL (SPACED @ 600mm CRS MAX), BY SYMONITE
- T50VRI ALUMINIUM MILL FINISH VERTICAL INTERMEDIATE SUPPORT RAIL (SPACED @ 600mm CRS MAX), BY SYMONITE
- SS HEX TEK T17 TIP SCREW 14g x 75 mm, BY SYMONITE
- SS HEX TEK SDS TIP SCREW 14g x 25 mm, BY SYMONITE
- PROPRIETARY STAINLESS STEEL 4.8 mm RIVET POWDERCOATED OR STAINLESS STEEL FINISH (MIN 2 PER SHEET, SPACED @ 600mm CRS MAX), BY SYMONITE
- PROPRIETARY BLACK PVC FOAM TAPE 9x3mm, CONTINUOUS VERTICAL, BY SYMONITE
- CORNER CLIP PROFILE, FIXED WITH STAINLESS STEEL S/ TAP PH 8g x 12mm (min 2 PER RAIL), BY SYMONITE
- ALU./ALU. 1. 4 CSK POP-RIVET (min 2 PER RAIL, SPACED @ 600mm CRS MAX), BY SYMONITE
- 10mm NEGATIVE JOINT
- T50 HR HORIZONTAL FLASHING, BLACK POWDERCOATED FINISH, ADHESIVE FIXING TO TOP EDGE OF THE EQUITONE FIBER CEMENT PANEL, BY SYMONITE
- STRUCTURAL TIMBER NOG TO NZS3604 PRIOR INSTALLATION, FIXED WITH MINIMUM 3 NAILS, BY OTHERS
- SCREW FIXING, BY SYMONITE
- FIXING INTO TIMBER WITH SS HEX TEK T17 TIP SCREW 10g x 35 mm @ 400 CRS max, BY SYMONITE
- T50JC ALUM. RAIL, MILL FINISH, CONTINUOUS VERTICAL, BY SYMONITE
- BUTYL TAPE 50mm MIN COVER ON EACH SIDE, BY OTHERS
- FOLDED METAL FLASHING TO SUIT, BY OTHERS
- CONTINUOUS BUTYL TAPE, 35mm MIN COVER ON THE FLASHING, BY SYMONITE
- BUTYL TAPE DRESSED OVER, BY OTHERS
- FOLDED METAL FLASHING 60mm MIN COVER ON EACH SIDE, BY OTHERS
- SEALANT ON PEF ROD, BY SYMONITE
- PANEL TACK STRUCTURAL ADHESIVE BY SYMONITE

SYMONITE

WALL / FASCIA AND SOFFIT DETAIL

ARCHITECTURAL RESOURCE

SCALE: 1:2

SHEET NO.

14

ISSUE

A

DATE: MAY 2019

EQUITONE SYSTEM (mechanical fixings)

VANLUK MG100-XX TO SUIT, WITH BUTYL TAPE, CUT 50mm MIN AROUND THE PENETRATING ELEMENT, **BY OTHERS**

3mm SS, SELECTED FINISH, CUT 40mm MIN
AROUND THE PENETRATING ELEMENT, ON
1mm ADHESIVE TAPE, **BY SYMONITE**

CONTINUOUS APPROVED SEALANT AROUND -
THE PENETRATION, ON MG100-XX TO SUIT AS
A BOND BRAKER, **BY SYMONITE**

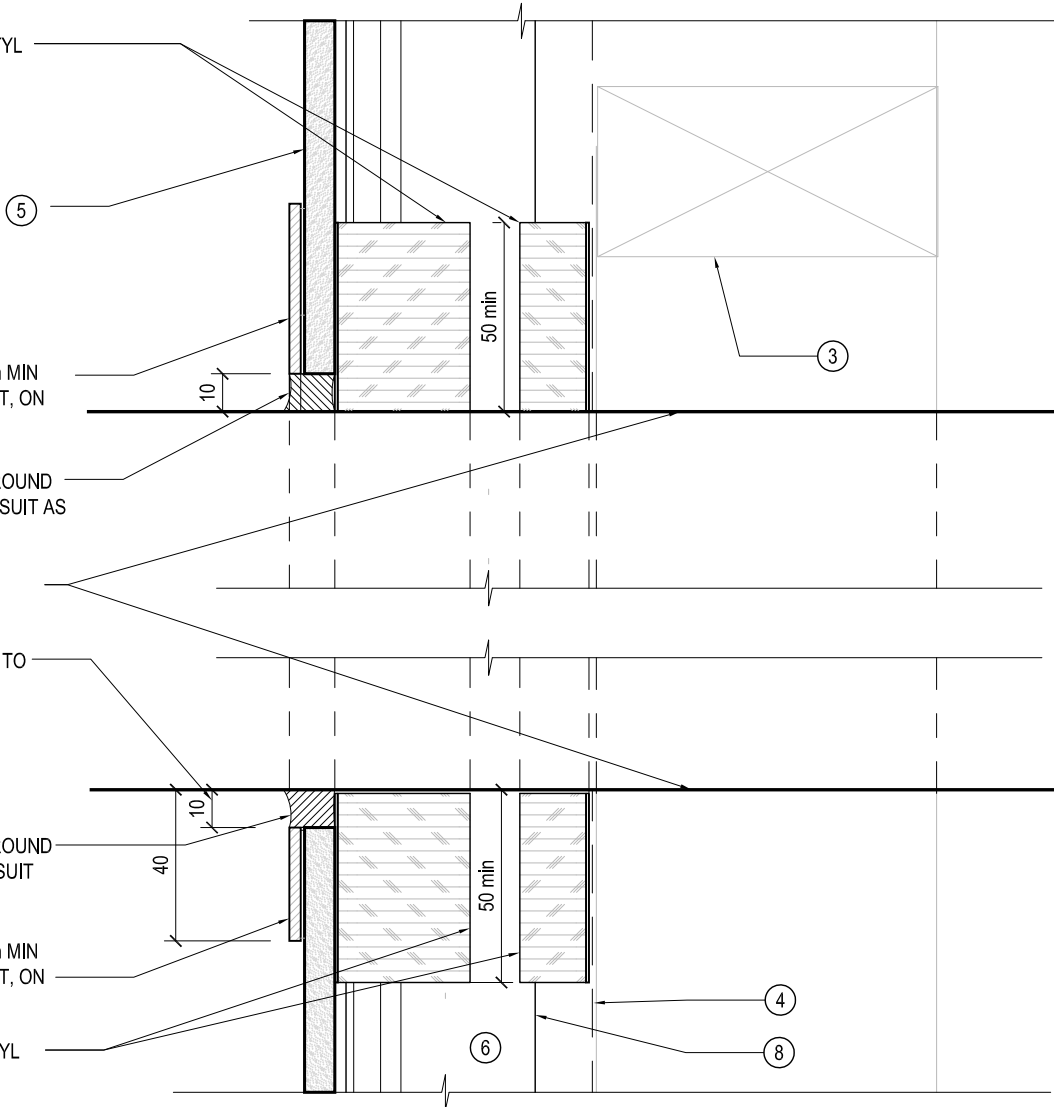
PENETRATING ELEMENT, BY OTHERS

10mm SIDE AND BOTTOM CLEARANCE TO THE PENETRATING ELEMENT IN THE EQUITONE PANEL, **BY SYMONITE**

CONTINUOUS APPROVED SEALANT AROUND
THE PENETRATION, ON MG100-XX TO SUIT
AS A BOND BRAKER, **BY SYMONITE**

3mm SS, SELECTED FINISH, CUT 40mm MIN
AROUND THE PENETRATING ELEMENT, ON
1mm ADHESIVE TAPE, **BY SYMONITE**

VANLUK MG100-XX TO SUIT WITH BUTYL TAPE, **BY OTHERS**



NOTES / SPECIFICATION :

1. DRAINAGE AND VENTILATION SLOT
2. INSULATION IF REQUIRED, BY OTHERS
3. FRAMING TO NZS3604, BY OTHERS
4. AIR BARRIER (RIGID OR FLEXIBLE WALL UNDERLAY), BY OTHERS
5. EQUITONE 8MM THICK FIBRE CEMENT PANEL, BY SYMONITE
6. DRAINED AND VENTILATED CAVITY
7. T50BR ALUMINIUM MILL FINISH CLADDING SUPPORT BRACKET OVER BUTYL PAD (MIN 2 PER RAIL, SPACED @ 800mm CRS MAX), BY SYMONITE
8. T50VR ALUMINIUM BLACK POWDERCOATED VERTICAL SUPPORT RAIL (SPACED @ 600mm CRS MAX), BY SYMONITE
9. T50VRI ALUMINIUM MILL FINISH VERTICAL INTERMEDIATE SUPPORT RAIL (SPACED @ 600mm CRS MAX), BY SYMONITE
10. SS HEX TEK T17 TIP SCREW 14g x 75 mm, BY SYMONITE
11. SS HEX TEK SDS TIP SCREW 14g x 25 mm, BY SYMONITE
12. PROPRIETARY STAINLESS STEEL 4.8 mm RIVET POWDERCOATED OR STAINLESS STEEL FINISH (MIN 2 PER SHEET, SPACED @ 600mm CRS MAX), BY SYMONITE
13. PROPRIETARY BLACK PVC FOAM TAPE 9x3mm, CONTINUOUS VERTICAL, BY SYMONITE
14. CORNER CLIP PROFILE, FIXED WITH STAINLESS STEEL S/ TAP PH 8g x 12mm (min 2 PER RAIL), BY SYMONITE
15. ALU./ALU. 'L' 4 CSK POP-RIVET (min 2 PER RAIL, SPACED @ 600mm CRS MAX), BY SYMONITE
16. 10mm NEGATIVE JOINT
17. T50 HR HORIZONTAL FLASHING, BLACK POWDERCOATED FINISH, ADHESIVE FIXING TO TOP EDGE OF THE EQUITONE FIBER CEMENT PANEL, BY SYMONITE
18. STRUCTURAL TIMBER NOG TO NZS3604 PRIOR INSTALLATION, FIXED WITH MINIMUM 3 NAILS, BY OTHERS
19. SCREW FIXING, BY SYMONITE
20. FIXING INTO TIMBER WITH SS HEX TEK T17 TIP SCREW 10g x 35 mm @ 400 CRS max, BY SYMONITE
21. T50JC ALUM. RAIL, MILL FINISH, CONTINUOUS VERTICAL, BY SYMONITE
22. BUTYL TAPE 50mm MIN COVER ON EACH SIDE, BY OTHERS
23. FOLDED METAL FLASHING TO SUIT, BY OTHERS
24. CONTINUOUS BUTYL TAPE, 35mm MIN COVER ON THE FLASHING, BY SYMONITE
25. BUTYL TAPE DRESSED OVER, BY OTHERS
26. FOLDED METAL FLASHING 60mm MIN COVER ON EACH SIDE, BY OTHERS
27. SEALANT ON PEF ROD, BY SYMONITE
28. PANEL TACK STRUCTURAL ADHESIVE BY SYMONITE

SYMONITE

DRAWING TITLE

STANDARD PENETRATION DETAIL

DRAWING STATUS

ARCHITECTURAL RESOURCE

SHEET NO.

15

ISSUE

A

SCALE: 1:2

DATE: MAY 2019

EQUITONE SYSTEM (mechanical fixings)

VANLUK MG100-XX TO SUIT, WITH BUTYL TAPE, CUT 50mm MIN AROUND THE PENETRATING ELEMENT, **BY OTHERS**

FLASHING TAPE AROUND THE SLEEVE SUPPLYED WITH THE SLEEVE, **BY OTHERS**

3mm SS, SELECTED FINISH, CUT 40mm MIN AROUND THE PENETRATING ELEMENT, ON 1mm ADHESIVE TAPE, **BY SYMONITE**

CONTINUOUS APPROVED SEALANT AROUND THE PENETRATION, ON MG100-XX TO SUIT AS A BOND BRAKER, **BY SYMONITE**

PENETRATING PIPE, APPROVED FIXINGS TO THE FRAME, **BY OTHERS**

10mm SIDE AND BOTTOM CLEARANCE TO THE PENETRATING ELEMENT IN THE EQUITONE PANEL, **BY SYMONITE**

SELECTED ELASTIC EPDM SLEEVE FITTED WITH A SELF ADHESIVE FLANGE, **BY OTHERS**

CONTINUOUS APPROVED SEALANT AROUND THE PENETRATION, ON MG100-XX TO SUIT AS A BOND BRAKER, **BY SYMONITE**

3mm SS, SELECTED FINISH, CUT 40mm MIN AROUND THE PENETRATING ELEMENT, ON 1mm ADHESIVE TAPE, **BY SYMONITE**

VANLUK MG100-XX TO SUIT WITH BUTYL TAPE, **BY OTHERS**

FLASHING TAPE AROUND THE SLEEVE SUPPLIED WITH THE SLEEVE, **BY OTHERS**

NOTES / SPECIFICATION :

- DRAINAGE AND VENTILATION SLOT
- INSULATION IF REQUIRED, BY OTHERS
- FRAMING TO NZS3604, BY OTHERS
- AIR BARRIER (RIGID OR FLEXIBLE WALL UNDERLAY), BY OTHERS
- EQUITONE 8MM THICK FIBRE CEMENT PANEL, BY SYMONITE
- DRAINED AND VENTILATED CAVITY
- T50BR ALUMINIUM MILL FINISH CLADDING SUPPORT BRACKET OVER BUTYL PAD (MIN 2 PER RAIL, SPACED @ 800mm CRS MAX), BY SYMONITE
- T50VR ALUMINIUM BLACK POWDERCOATED VERTICAL SUPPORT RAIL (SPACED @ 600mm CRS MAX), BY SYMONITE
- T50VRI ALUMINIUM MILL FINISH VERTICAL INTERMEDIATE SUPPORT RAIL (SPACED @ 600mm CRS MAX), BY SYMONITE
- SS HEX TEK T17 TIP SCREW 14g x 75 mm, BY SYMONITE
- SS HEX TEK SDS TIP SCREW 14g x 25 mm, BY SYMONITE
- PROPRIETARY STAINLESS STEEL 4.8 mm RIVET POWDERCOATED OR STAINLESS STEEL FINISH (MIN 2 PER SHEET, SPACED @ 600mm CRS MAX), BY SYMONITE
- PROPRIETARY BLACK PVC FOAM TAPE 9x3mm, CONTINUOUS VERTICAL, BY SYMONITE
- CORNER CLIP PROFILE, FIXED WITH STAINLESS STEEL S/ TAP PH 8g x 12mm (min 2 PER RAIL), BY SYMONITE
- ALU./ALU. 1.4 CSK POP-RIVET (min 2 PER RAIL, SPACED @ 600mm CRS MAX), BY SYMONITE
- 10mm NEGATIVE JOINT
- T50 HR HORIZONTAL FLASHING, BLACK POWDERCOATED FINISH, ADHESIVE FIXING TO TOP EDGE OF THE EQUITONE FIBRE CEMENT PANEL, BY SYMONITE
- STRUCTURAL TIMBER NOG TO NZS3604 PRIOR INSTALLATION, FIXED WITH MINIMUM 3 NAILS, BY OTHERS
- SCREW FIXING, BY SYMONITE
- FIXING INTO TIMBER WITH SS HEX TEK T17 TIP SCREW 10g x 35 mm @ 400 CRS max, BY SYMONITE
- T50JC ALUM. RAIL, MILL FINISH, CONTINUOUS VERTICAL, BY SYMONITE
- BUTYL TAPE 50mm MIN COVER ON EACH SIDE, BY OTHERS
- FOLDED METAL FLASHING TO SUIT, BY OTHERS
- CONTINUOUS BUTYL TAPE, 35mm MIN COVER ON THE FLASHING, BY SYMONITE
- BUTYL TAPE DRESSED OVER, BY OTHERS
- FOLDED METAL FLASHING 60mm MIN COVER ON EACH SIDE, BY OTHERS
- SEALANT ON PEF ROD, BY SYMONITE
- PANEL TACK STRUCTURAL ADHESIVE BY SYMONITE



STANDARD PIPE PENETRATION DETAIL

ARCHITECTURAL RESOURCE

SCALE: 1:2

SHEET NO.

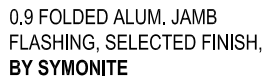
16

ISSUE

A

DATE: MAY 2019

EQUITONE SYSTEM (mechanical fixings)



NOTES / SPECIFICATION :

1. DRAINAGE AND VENTILATION SLOT
2. INSULATION IF REQUIRED, BY OTHERS
3. FRAMING TO NZS3604, BY OTHERS
4. AIR BARRIER (RIGID OR FLEXIBLE WALL UNDERLAY), BY OTHERS
5. EQUITONE 8MM THICK FIBRE CEMENT PANEL, BY SYMONITE
6. DRAINED AND VENTILATED CAVITY
7. T50BR ALUMINIUM MILL FINISH CLADDING SUPPORT BRACKET OVER BUTYL PAD (MIN 2 PER RAIL, SPACED @ 800mm CRS MAX), BY SYMONITE
8. T50VR ALUMINIUM BLACK POWDERCOATED VERTICAL SUPPORT RAIL (SPACED @ 600mm CRS MAX), BY SYMONITE
9. T50VRI ALUMINIUM MILL FINISH VERTICAL INTERMEDIATE SUPPORT RAIL (SPACED @ 600mm CRS MAX), BY SYMONITE
10. SS HEX TEK T17 TIP SCREW 14g x 75 mm, BY SYMONITE
11. SS HEX TEK SDS TIP SCREW 14g x 25 mm, BY SYMONITE
12. PROPRIETARY STAINLESS STEEL 4.8 mm RIVET POWDERCOATED OR STAINLESS STEEL FINISH (MIN 2 PER SHEET, SPACED @ 600mm CRS MAX), BY SYMONITE
13. PROPRIETARY BLACK PVC FOAM TAPE 9x3mm, CONTINUOUS VERTICAL, BY SYMONITE
14. CORNER CLIP PROFILE, FIXED WITH STAINLESS STEEL S/ TAP PH 8g x 12mm (min 2 PER RAIL), BY SYMONITE
15. ALU./ALU. ' . 4 CSK POP-RIVET (min 2 PER RAIL, SPACED @ 600mm CRS MAX), BY SYMONITE
16. 10mm NEGATIVE JOINT
17. T50 HR HORIZONTAL FLASHING, BLACK POWDERCOATED FINISH, ADHESIVE FIXING TO TOP EDGE OF THE EQUITONE FIBER CEMENT PANEL, BY SYMONITE
18. STRUCTURAL TIMBER NOG TO NZS3604 PRIOR INSTALLATION, FIXED WITH MINIMUM 3 NAILS, BY OTHERS
19. SCREW FIXING, BY SYMONITE
20. FIXING INTO TIMBER WITH SS HEX TEK T17 TIP SCREW 10g x 35 mm @ 400 CRS max, BY SYMONITE
21. T50JC ALUM. RAIL, MILL FINISH, CONTINUOUS VERTICAL, BY SYMONITE
22. BUTYL TAPE 50mm MIN COVER ON EACH SIDE, BY OTHERS
23. FOLDED METAL FLASHING TO SUIT, BY OTHERS
24. CONTINUOUS BUTYL TAPE, 35mm MIN COVER ON THE FLASHING, BY SYMONITE
25. BUTYL TAPE DRESSED OVER, BY OTHERS
26. FOLDED METAL FLASHING 60mm MIN COVER ON EACH SIDE, BY OTHERS
27. SEALANT ON PEF ROD, BY SYMONITE
28. PANEL TACK STRUCTURAL ADHESIVE BY SYMONITE



DRAWING TITLE

VERTICAL CONNECTION DETAIL TO THE WALL / ELEMENT DETAIL

DRAWING STATUS	
1	1
2	2
3	3
4	4
5	5
6	6
7	7
8	8
9	9
10	10
11	11
12	12
13	13
14	14
15	15
16	16
17	17
18	18
19	19
20	20
21	21
22	22
23	23
24	24
25	25
26	26
27	27
28	28
29	29
30	30
31	31
32	32
33	33
34	34
35	35
36	36
37	37
38	38
39	39
40	40
41	41
42	42
43	43
44	44
45	45
46	46
47	47
48	48
49	49
50	50
51	51
52	52
53	53
54	54
55	55
56	56
57	57
58	58
59	59
60	60
61	61
62	62
63	63
64	64
65	65
66	66
67	67
68	68
69	69
70	70
71	71
72	72
73	73
74	74
75	75
76	76
77	77
78	78
79	79
80	80
81	81
82	82
83	83
84	84
85	85
86	86
87	87
88	88
89	89
90	90
91	91
92	92
93	93
94	94
95	95
96	96
97	97
98	98
99	99
100	100

ARCHITECTURAL
RESOURCE

SCALE: 1:2

SHEET NO.

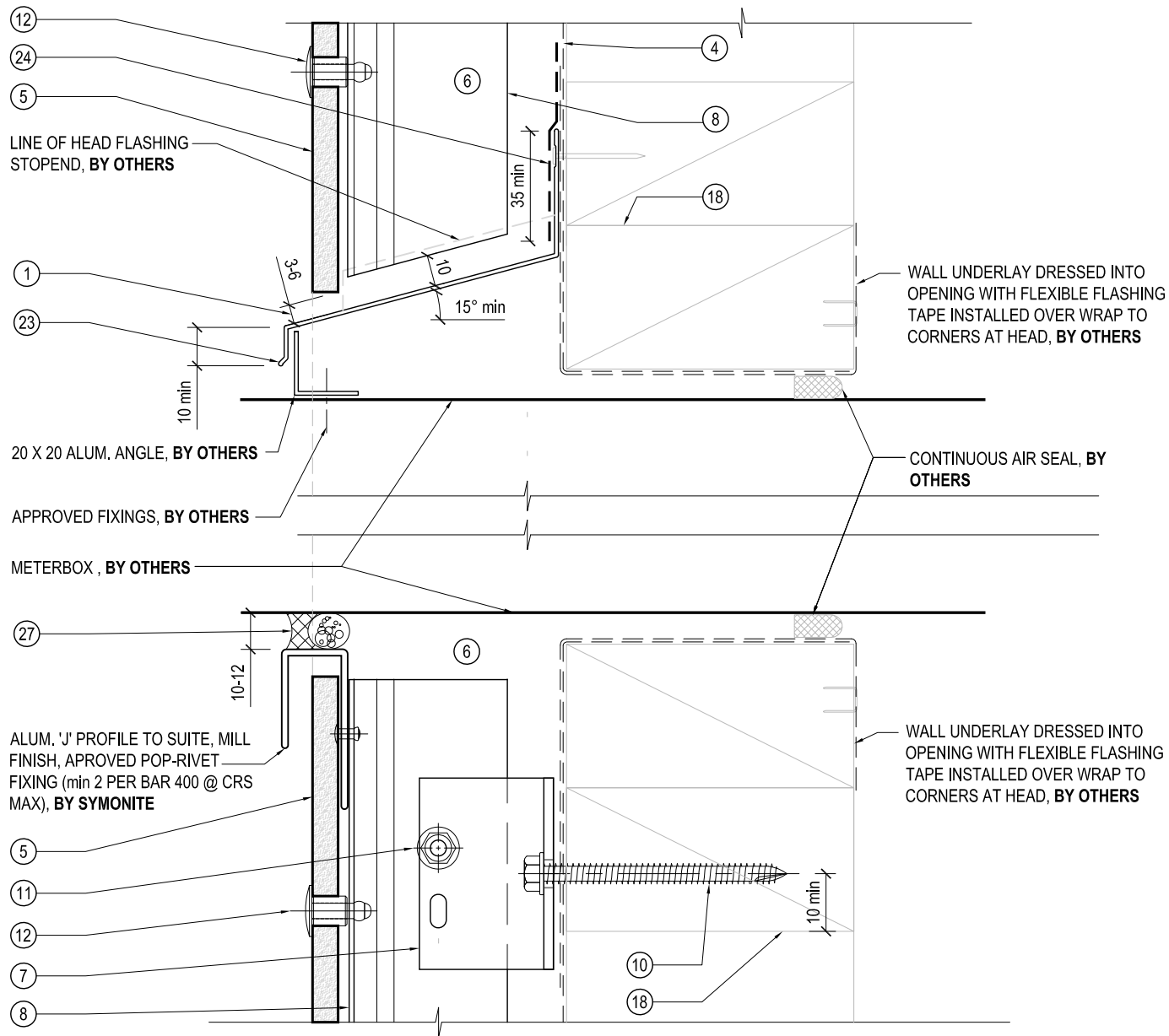
18

ISSUE

A

DATE: MAY 2019

EQUITONE SYSTEM (mechanical fixings)



NOTES / SPECIFICATION :

1. DRAINAGE AND VENTILATION SLOT
2. INSULATION IF REQUIRED, BY OTHERS
3. FRAMING TO NZS3604, BY OTHERS
4. AIR BARRIER (RIGID OR FLEXIBLE WALL UNDERLAY), BY OTHERS
5. EQUITONE 8MM THICK FIBRE CEMENT PANEL, BY SYMONITE
6. DRAINED AND VENTILATED CAVITY
7. T50BR ALUMINIUM MILL FINISH CLADDING SUPPORT BRACKET OVER BUTYL PAD (MIN 2 PER RAIL, SPACED @ 800mm CRS MAX), BY SYMONITE
8. T50VR ALUMINIUM BLACK POWDERCOATED VERTICAL SUPPORT RAIL (SPACED @ 600mm CRS MAX), BY SYMONITE
9. T50VRI ALUMINIUM MILL FINISH VERTICAL INTERMEDIATE SUPPORT RAIL (SPACED @ 600mm CRS MAX), BY SYMONITE
10. SS HEX TEK T17 TIP SCREW 14g x 75 mm, BY SYMONITE
11. SS HEX TEK SDS TIP SCREW 14g x 25 mm, BY SYMONITE
12. PROPRIETARY STAINLESS STEEL 4.8 mm RIVET POWDERCOATED OR STAINLESS STEEL FINISH (MIN 2 PER SHEET, SPACED @ 600mm CRS MAX), BY SYMONITE
13. PROPRIETARY BLACK PVC FOAM TAPE 9x3mm, CONTINUOUS VERTICAL, BY SYMONITE
14. CORNER CLIP PROFILE, FIXED WITH STAINLESS STEEL S/ TAP PH 8g x 12mm (min 2 PER RAIL), BY SYMONITE
15. ALU./ALU. 1. 4 CSK POP-RIVET (min 2 PER RAIL, SPACED @ 600mm CRS MAX), BY SYMONITE
16. 10mm NEGATIVE JOINT
17. T50 HR HORIZONTAL FLASHING, BLACK POWDERCOATED FINISH, ADHESIVE FIXING TO TOP EDGE OF THE EQUITONE FIBER CEMENT PANEL, BY SYMONITE
18. STRUCTURAL TIMBER NOG TO NZS3604 PRIOR INSTALLATION, FIXED WITH MINIMUM 3 NAILS, BY OTHERS
19. SCREW FIXING, BY SYMONITE
20. FIXING INTO TIMBER WITH SS HEX TEK T17 TIP SCREW 10g x 35 mm @ 400 CRS max, BY SYMONITE
21. T50JC ALUM. RAIL, MILL FINISH, CONTINUOUS VERTICAL, BY SYMONITE
22. BUTYL TAPE 50mm MIN COVER ON EACH SIDE, BY OTHERS
23. FOLDED METAL FLASHING TO SUIT, BY OTHERS
24. CONTINUOUS BUTYL TAPE, 35mm MIN COVER ON THE FLASHING, BY SYMONITE
25. BUTYL TAPE DRESSED OVER, BY OTHERS
26. FOLDED METAL FLASHING 60mm MIN COVER ON EACH SIDE, BY OTHERS
27. SEALANT ON PEF ROD, BY SYMONITE
28. PANEL TACK STRUCTURAL ADHESIVE BY SYMONITE

SYMONITE

METERBOX HEAD AND SILL DETAIL

**ARCHITECTURAL
RESOURCE**

SHEET NO.

19

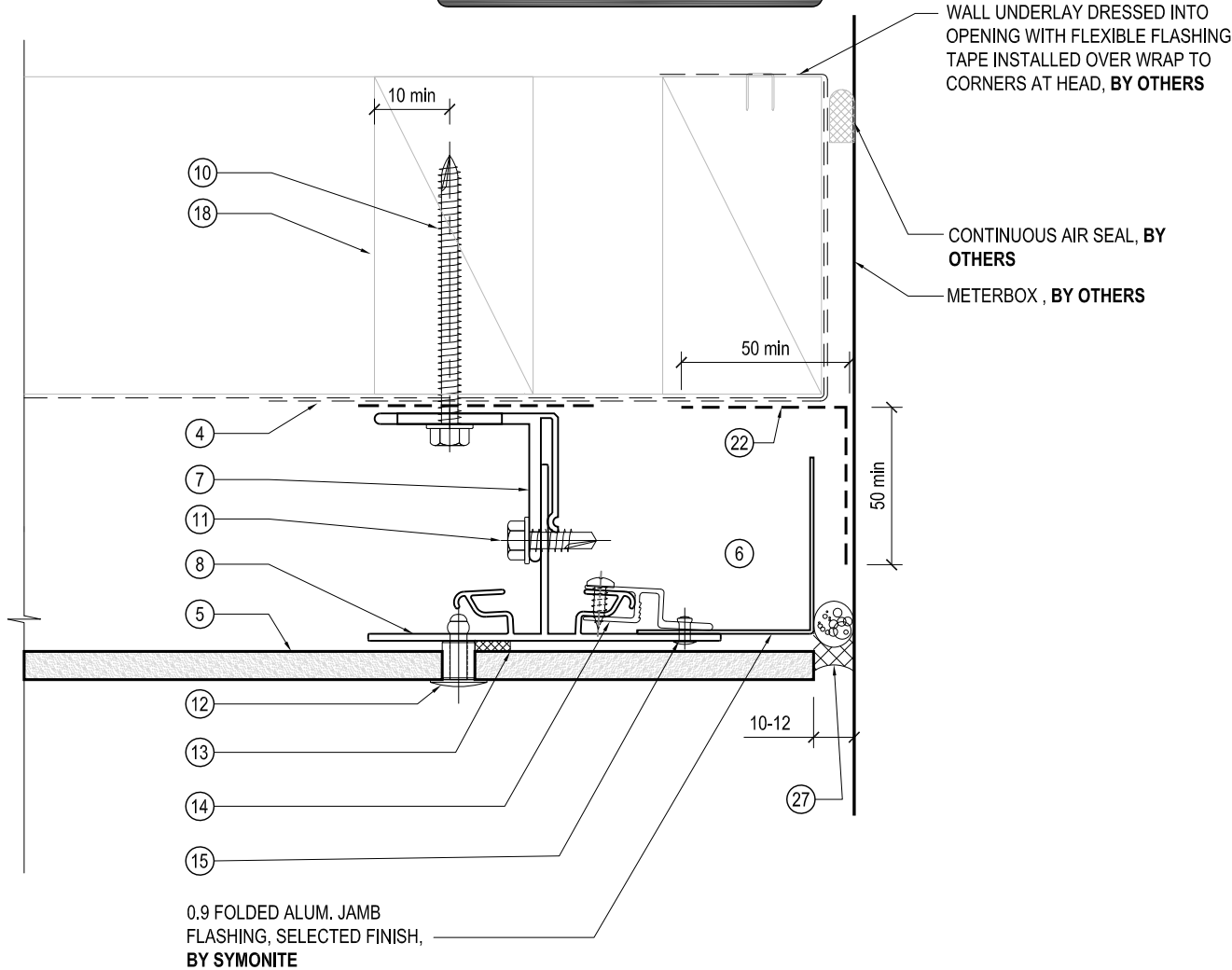
ISSUE

A

SCALE:

DATE: MAY 2019

EQUITONE SYSTEM (mechanical fixings)



NOTES / SPECIFICATION :

- DRAINAGE AND VENTILATION SLOT
- INSULATION IF REQUIRED, BY OTHERS
- FRAMING TO NZS3604, BY OTHERS
- AIR BARRIER (RIGID OR FLEXIBLE WALL UNDERLAY), BY OTHERS
- EQUITONE 8MM THICK FIBRE CEMENT PANEL, BY SYMONITE
- DRAINED AND VENTILATED CAVITY
- T50BR ALUMINIUM MILL FINISH CLADDING SUPPORT BRACKET OVER BUTYL PAD (MIN 2 PER RAIL, SPACED @ 800mm CRS MAX), BY SYMONITE
- T50VR ALUMINIUM BLACK POWDERCOATED VERTICAL SUPPORT RAIL (SPACED @ 600mm CRS MAX), BY SYMONITE
- T50VRI ALUMINIUM MILL FINISH VERTICAL INTERMEDIATE SUPPORT RAIL (SPACED @ 600mm CRS MAX), BY SYMONITE
- SS HEX TEK T17 TIP SCREW 14g x 75 mm, BY SYMONITE
- SS HEX TEK SDS TIP SCREW 14g x 25 mm, BY SYMONITE
- PROPRIETARY STAINLESS STEEL 4.8 mm RIVET POWDERCOATED OR STAINLESS STEEL FINISH (MIN 2 PER SHEET, SPACED @ 600mm CRS MAX), BY SYMONITE
- PROPRIETARY BLACK PVC FOAM TAPE 9x3mm, CONTINUOUS VERTICAL, BY SYMONITE
- CORNER CLIP PROFILE, FIXED WITH STAINLESS STEEL S/ TAP PH 8g x 12mm (min 2 PER RAIL), BY SYMONITE
- ALU./ALU. 1.4 CSK POP-RIVET (min 2 PER RAIL, SPACED @ 600mm CRS MAX), BY SYMONITE
- 10mm NEGATIVE JOINT
- T50 HR HORIZONTAL FLASHING, BLACK POWDERCOATED FINISH, ADHESIVE FIXING TO TOP EDGE OF THE EQUITONE FIBER CEMENT PANEL, BY SYMONITE
- SRUCTURAL TIMBER NOG TO NZS3604 PRIOR INSTALLATION, FIXED WITH MINIMUM 3 NAILS, BY OTHERS
- SCREW FIXING, BY SYMONITE
- FIXING INTO TIMBER WITH SS HEX TEK T17 TIP SCREW 10g x 35 mm @ 400 CRS max, BY SYMONITE
- T50JC ALUM. RAIL, MILL FINISH, CONTINUOUS VERTICAL, BY SYMONITE
- BUTYL TAPE 50mm MIN COVER ON EACH SIDE, BY OTHERS
- FOLDED METAL FLASHING TO SUIT, BY OTHERS
- CONTINUOUS BUTYL TAPE, 35mm MIN COVER ON THE FLASHING, BY SYMONITE
- BUTYL TAPE DRESSED OVER, BY OTHERS
- FOLDED METAL FLASHING 60mm MIN COVER ON EACH SIDE, BY OTHERS
- SEALANT ON PEF ROD, BY SYMONITE
- PANEL TACK STRUCTURAL ADHESIVE BY SYMONITE

SYMONITE

JAMB METERBOX CONNECTION DETAIL

ARCHITECTURAL
RESOURCE

SCALE: 1:2

SHEET NO.

20

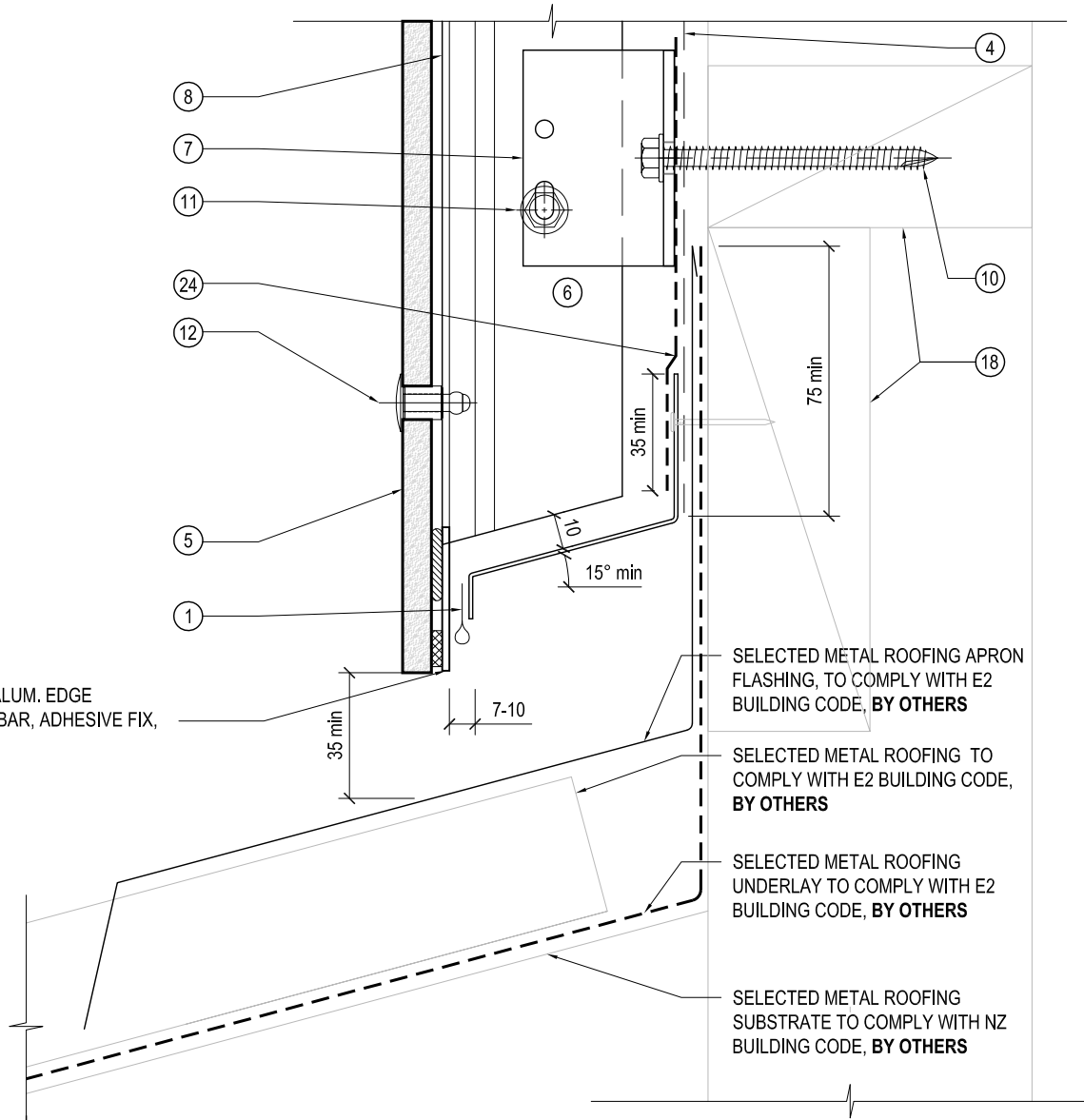
ISSUE

A

DATE: MAY 2019

EQUITONE SYSTEM (mechanical fixings)

1.2mm THICK ALUM. EDGE
REINFORCING BAR, ADHESIVE FIX,
BY SYMONITE



SELECTED METAL ROOFING APRON
FLASHING, TO COMPLY WITH E2
BUILDING CODE, **BY OTHERS**

SELECTED METAL ROOFING TO
COMPLY WITH E2 BUILDING CODE,
BY OTHERS

SELECTED METAL ROOFING
UNDERLAY TO COMPLY WITH E2
BUILDING CODE, **BY OTHERS**

SELECTED METAL ROOFING
SUBSTRATE TO COMPLY WITH NZ
BUILDING CODE, **BY OTHERS**

NOTES / SPECIFICATION :

- DRAINAGE AND VENTILATION SLOT
- INSULATION IF REQUIRED, BY OTHERS
- FRAMING TO NZS3604, BY OTHERS
- AIR BARRIER (RIGID OR FLEXIBLE WALL UNDERLAY), BY OTHERS
- EQUITONE 8MM THICK FIBRE CEMENT PANEL, BY SYMONITE
- DRAINED AND VENTILATED CAVITY
- T50BR ALUMINIUM MILL FINISH CLADDING SUPPORT BRACKET OVER BUTYL PAD (MIN 2 PER RAIL, SPACED @ 800mm CRS MAX), BY SYMONITE
- T50VR ALUMINIUM BLACK POWDERCOATED VERTICAL SUPPORT RAIL (SPACED @ 600mm CRS MAX), BY SYMONITE
- T50VRI ALUMINIUM MILL FINISH VERTICAL INTERMEDIATE SUPPORT RAIL (SPACED @ 600mm CRS MAX), BY SYMONITE
- SS HEX TEK T17 TIP SCREW 14g x 75 mm, BY SYMONITE
- SS HEX TEK SDS TIP SCREW 14g x 25 mm, BY SYMONITE
- PROPRIETARY STAINLESS STEEL 4.8 mm RIVET POWDERCOATED OR STAINLESS STEEL FINISH (MIN 2 PER SHEET, SPACED @ 600mm CRS MAX), BY SYMONITE
- PROPRIETARY BLACK PVC FOAM TAPE 9x3mm, CONTINUOUS VERTICAL, BY SYMONITE
- CORNER CLIP PROFILE, FIXED WITH STAINLESS STEEL S/ TAP PH 8g x 12mm (min 2 PER RAIL), BY SYMONITE
- ALU./ALU. 1.4 CSK POP-RIVET (min 2 PER RAIL, SPACED @ 600mm CRS MAX), BY SYMONITE
- 10mm NEGATIVE JOINT
- T50 HR HORIZONTAL FLASHING, BLACK POWDERCOATED FINISH, ADHESIVE FIXING TO TOP EDGE OF THE EQUITONE FIBER CEMENT PANEL, BY SYMONITE
- SRUCTURAL TIMBER NOG TO NZS3604 PRIOR INSTALLATION, FIXED WITH MINIMUM 3 NAILS, BY OTHERS
- SCREW FIXING, BY SYMONITE
- FIXING INTO TIMBER WITH SS HEX TEK T17 TIP SCREW 10g x 35 mm @ 400 CRS max, BY SYMONITE
- T50JC ALUM. RAIL, MILL FINISH, CONTINUOUS VERTICAL, BY SYMONITE
- BUTYL TAPE 50mm MIN COVER ON EACH SIDE, BY OTHERS
- FOLDED METAL FLASHING TO SUIT, BY OTHERS
- CONTINUOUS BUTYL TAPE, 35mm MIN COVER ON THE FLASHING, BY SYMONITE
- BUTYL TAPE DRESSED OVER, BY OTHERS
- FOLDED METAL FLASHING 60mm MIN COVER ON EACH SIDE, BY OTHERS
- SEALANT ON PEF ROD, BY SYMONITE
- PANEL TACK STRUCTURAL ADHESIVE BY SYMONITE

SYMONITE

WALL TO METAL ROOF DETAIL

ARCHITECTURAL
RESOURCE

SCALE: 1:2

SHEET NO.

21

ISSUE

A

DATE: MAY 2019